

# FOR SALE - Vacant Land

15790 Glendale Ln.

Fort Myers, FL 33912



## OFFERING SUMMARY

Sale Price: **\$575,000**

Lot Size: 10.34 Acres

Zoning: AG-2

Future Land Use: Rural

Price / SF: \$1.28

## PROPERTY OVERVIEW

The Subject Property is located in the Briarcliff subdivision east of Michael G. Rippe Parkway in South Fort Myers. This rural site consists of seven contiguous lots off Briarcliff Rd. totaling 10.34 acres. Briarcliff is an estate home community in South Fort Myers in close proximity to RSW Airport and the beaches. Build your dream estate or multiple homes for your family on this pristine parcel.

## PROPERTY HIGHLIGHTS

- Great Investment Property
- Zoned Agricultural (AG-2)
- Estate Home Community

## DEMOGRAPHICS

|                   | 1 MILE    | 5 MILES  | 10 MILES |
|-------------------|-----------|----------|----------|
| Total Households  | 434       | 37,700   | 126,506  |
| Total Population  | 1,203     | 87,132   | 294,381  |
| Average HH Income | \$115,853 | \$74,143 | \$76,007 |

**Bob O'Connor**

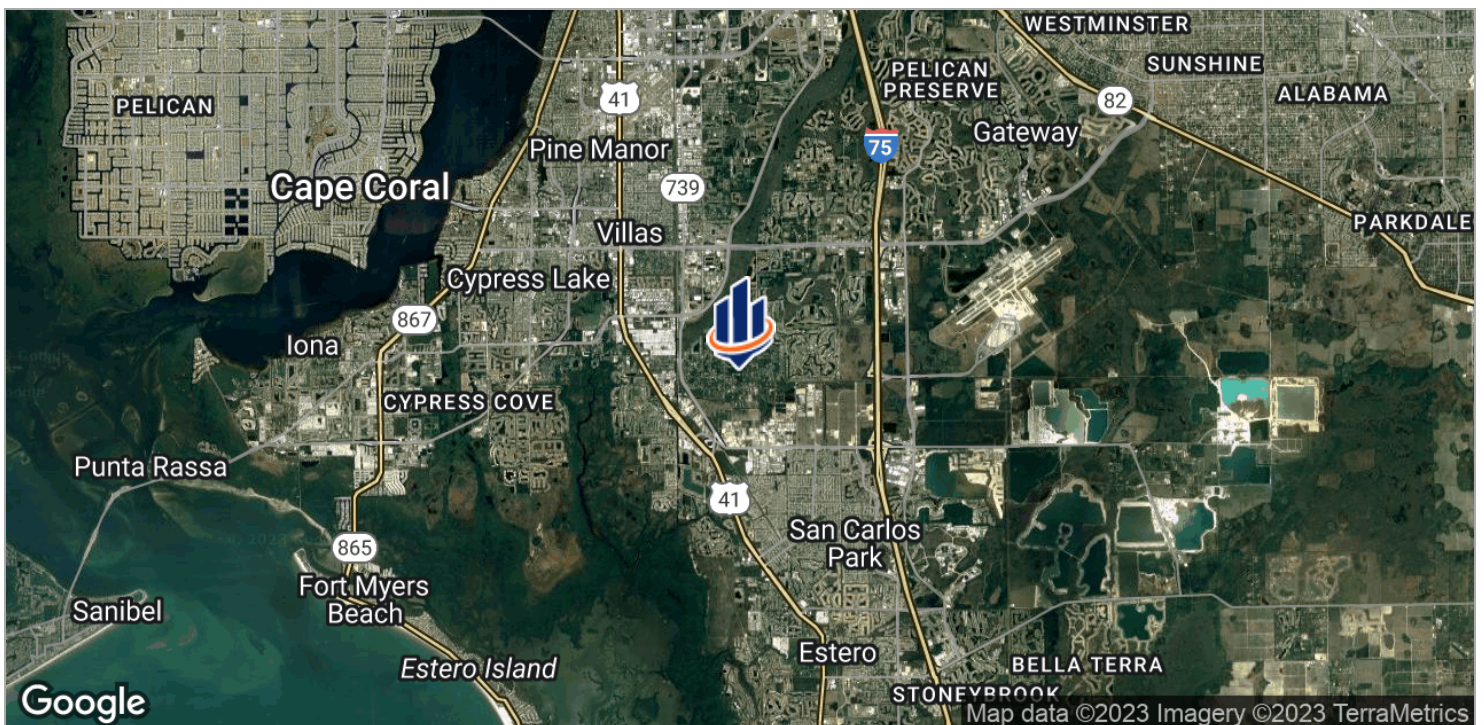
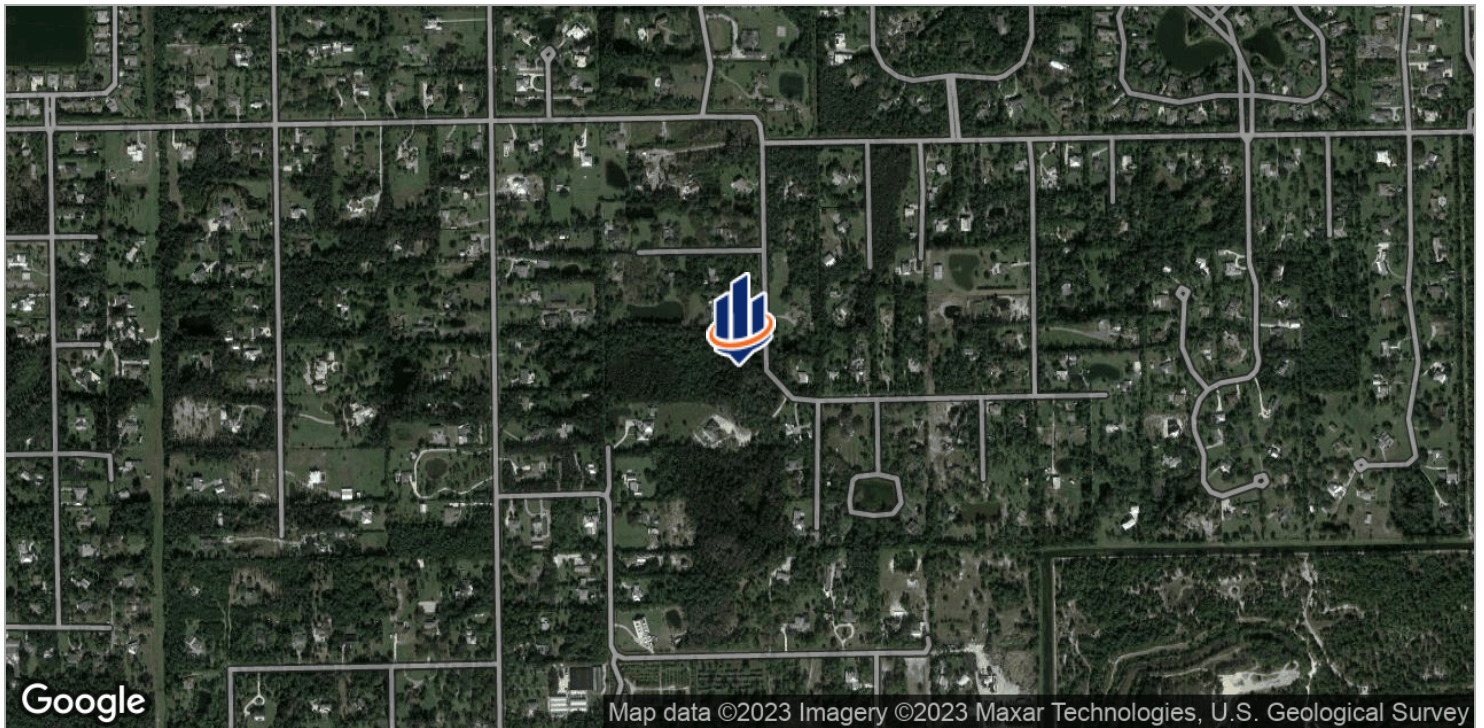
Advisor  
239.315.7093  
bob.oconnor@svn.com



The information presented here is deemed to be accurate, but it has not been independently verified. We make no guarantee, warranty or representation. It is your responsibility to independently confirm accuracy and completeness. All SVN® offices are independently owned and operated.



# FOR SALE - Vacant Land



**Bob O'Connor**  
Advisor  
239.315.7093  
bob.oconnor@svn.com



The information presented here is deemed to be accurate, but it has not been independently verified. We make no guarantee, warranty or representation. It is your responsibility to independently confirm accuracy and completeness. All SVN® offices are independently owned and operated.