

OFFICE FOR SALE 7120 MINSTREL WAY

Columbia, MD 21045

Available: 2,122 SF

Why rent when you can own?!



LISTING DATA

OFFICE SF: 2,122

ECONOMIC DATA

SALE PRICE: \$498,670

PROPERTY INFORMATION

COUNTY: Howard
MARKET: Baltimore
SUBMARKET: Columbia South

BUILDING DATA

TOTAL BUILDING SF: 2,122 SF
YEAR BUILT: 2006
ZONING: NT County

PROPERTY OVERVIEW

For Sale - Office Condo
Monthly Condo Fee - \$419.42
R.E. Tax - \$5,575.45
CPRA Tax - \$1,295.54

PROPERTY HIGHLIGHTS

- Suite 202 - 2,122 SF
- Located on the 2nd floor, elevator served
- Parking: 4.0/1,00 sf free unreserved surface parking
- Corner suite with great window line
- 6 offices
- In-suite bathroom in addition to common area bathrooms
- Amazing location within easy walk to Lake Elkhorn Park

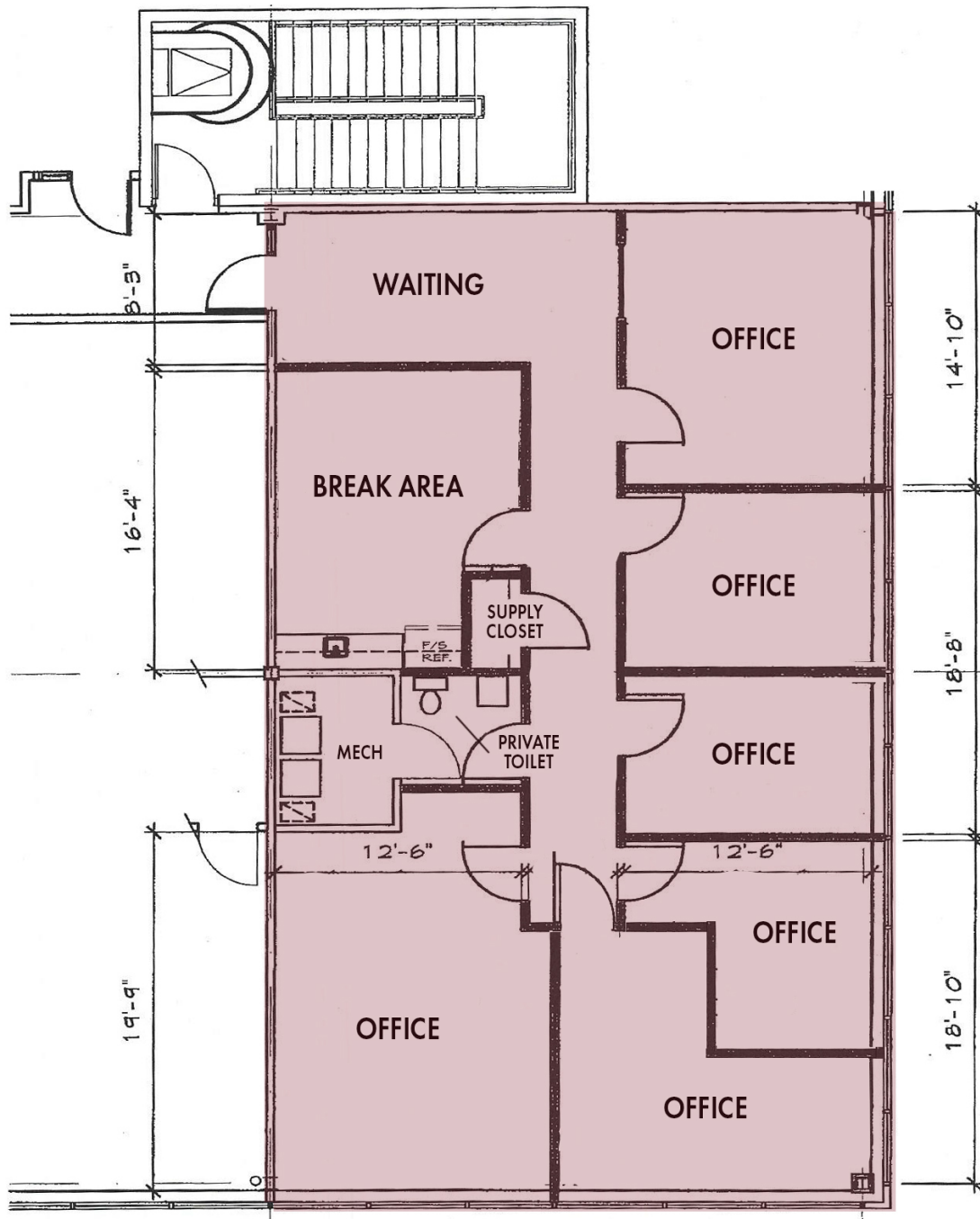
Bill Harrison
Senior Vice President
443.741.4045
bharrison@lee-associates.com

All information furnished regarding property for sale, rental or financing is from sources deemed reliable, but no warranty or representation is made to the accuracy thereof and same is submitted to errors, omissions, change of price, rental or other conditions prior to sale, lease or financing or withdrawal without notice. No liability of any kind is to be imposed on the broker herein.

OFFICE FOR SALE
7120 MINSTREL WAY

Columbia, MD 21045

Available: 2,122 SF



Suite 202 - 2,122 SF corner suite with great windows, 6 offices, a private bathroom and 2nd floor elevator served

Bill Harrison
Senior Vice President
443.741.4045
bharrison@lee-associates.com

All information furnished regarding property for sale, rental or financing is from sources deemed reliable, but no warranty or representation is made to the accuracy thereof and same is submitted to errors, omissions, change of price, rental or other conditions prior to sale, lease or financing or withdrawal without notice. No liability of any kind is to be imposed on the broker herein.

OFFICE FOR SALE 7120 MINSTREL WAY

Columbia, MD 21045

Available: 2,122 SF

LEE & ASSOCIATES
COMMERCIAL REAL ESTATE SERVICES



Bill Harrison
Senior Vice President
443.741.4045
bharrison@lee-associates.com

All information furnished regarding property for sale, rental or financing is from sources deemed reliable, but no warranty or representation is made to the accuracy thereof and same is submitted to errors, omissions, change of price, rental or other conditions prior to sale, lease or financing or withdrawal without notice. No liability of any kind is to be imposed on the broker herein.

OFFICE FOR SALE 7120 MINSTREL WAY

Columbia, MD 21045

Available: 2,122 SF

LEE & ASSOCIATES
COMMERCIAL REAL ESTATE SERVICES



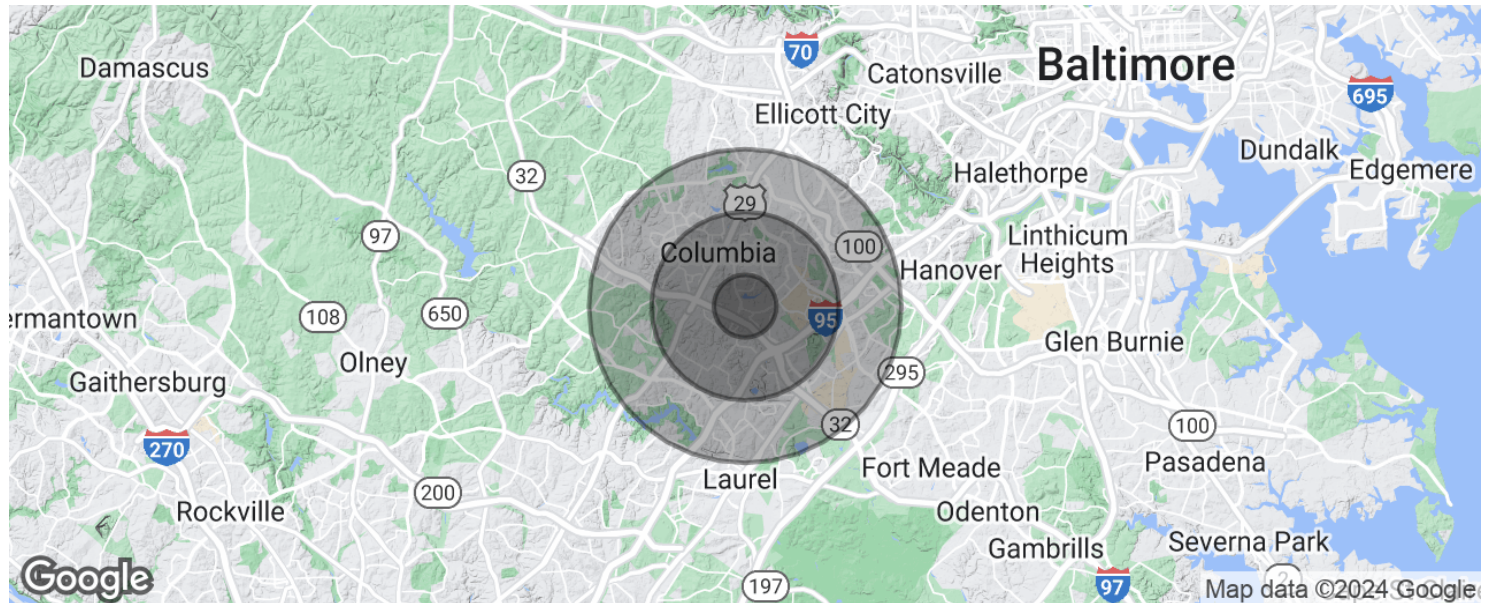
Bill Harrison
Senior Vice President
443.741.4045
bharrison@lee-associates.com

All information furnished regarding property for sale, rental or financing is from sources deemed reliable, but no warranty or representation is made to the accuracy thereof and same is submitted to errors, omissions, change of price, rental or other conditions prior to sale, lease or financing or withdrawal without notice. No liability of any kind is to be imposed on the broker herein.

OFFICE FOR SALE 7120 MINSTREL WAY

Columbia, MD 21045

Available: 2,122 SF



POPULATION

	1 MILE	3 MILES	5 MILES
Total population	10,401	71,931	194,589
Median age	37.3	37.1	36.7
Median age (Male)	37.7	36.2	35.7
Median age (Female)	38.8	38.3	37.7

HOUSEHOLDS & INCOME

	1 MILE	3 MILES	5 MILES
Total households	3,859	28,127	76,221
# of persons per HH	2.7	2.6	2.6
Average HH income	\$106,845	\$108,329	\$109,562
Average house value	\$404,264	\$419,611	\$425,141

* Demographic data derived from 2020 ACS - US Census

Bill Harrison
Senior Vice President
443.741.4045
bharrison@lee-associates.com

All information furnished regarding property for sale, rental or financing is from sources deemed reliable, but no warranty or representation is made to the accuracy thereof and same is submitted to errors, omissions, change of price, rental or other conditions prior to sale, lease or financing or withdrawal without notice. No liability of any kind is to be imposed on the broker herein.