

## LAND FOR SALE

# 8.173 ACRES OFF SOUTH INTERSTATE 35 IN EDDY

TBD South Interstate 35, Eddy, TX 76524



### OFFERING SUMMARY

<b>SALE PRICE:</b>	\$205,000
<b>LOT SIZE:</b>	8.173 Acres
<b>ZONING:</b>	Single Family District (Proposed Commercial)
<b>MARKET:</b>	Interstate 35
<b>SUBMARKET:</b>	Bruceville-Eddy

### PROPERTY OVERVIEW

H&A Commercial Team - KW Commercial would like to present this commercial real estate property for sale!

### PROPERTY HIGHLIGHTS

- 8.173 Acres
- Zoned: Single Family District (Proposed Commercial)
- Interstate 35 Frontage: 748.72'
- Property Depths: 420.47' – 566.82'
- 3 Phase Electric
- Existing Water, Gas, and Telephone Lines
- Easily Accessible
- Excellent Visibility
- South Interstate 35: 63,000 Vehicles/Day (TxDOT: 2016)
- 2018 Taxes: \$1,860 \*\*estimated\*\*

**KW COMMERCIAL**  
3701 West Waco Drive  
Waco, TX 76710

**BRAD HARRELL, CCIM**  
Broker Associate/Senior Director  
O: 254.870.0050  
C: 254.870.0060  
info@BradHarrellCCIM.com  
TX #363789

We obtained the information above from sources we believe to be reliable. However, we have not verified its accuracy and make no guarantee, warranty or representation about it. It is submitted subject to the possibility of errors, omissions, change of price, rental or other conditions, prior sale, lease or financing, or withdrawal without notice. We include projections, opinions, assumptions or estimates for example only, and they may not represent current or future performance of the property. You and your tax and legal advisors should conduct your own investigation of the property and transaction.

Each Office Independently Owned and Operated [harrellrealestateteam.com/commercial-real-estate/](http://harrellrealestateteam.com/commercial-real-estate/)



**LAND FOR SALE**

# PROPERTY BREAKDOWN

TBD South Interstate 35, Eddy, TX 76524



**KW COMMERCIAL**  
3701 West Waco Drive  
Waco, TX 76710

**BRAD HARRELL, CCIM**  
Broker Associate/Senior Director  
O: 254.870.0050  
C: 254.870.0060  
info@BradHarrellCCIM.com  
TX #363789

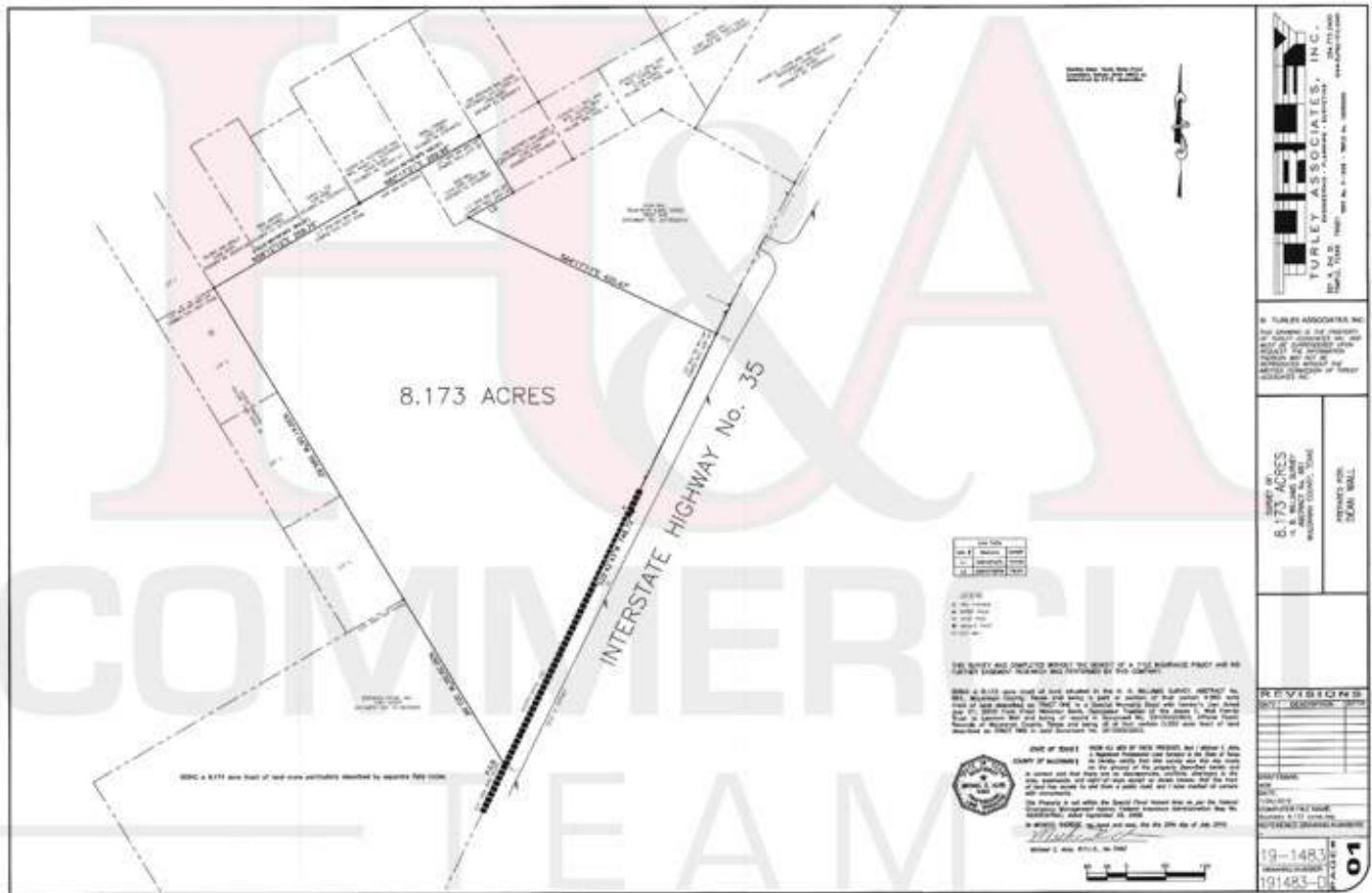
We obtained the information above from sources we believe to be reliable. However, we have not verified its accuracy and make no guarantee, warranty or representation about it. It is submitted subject to the possibility of errors, omissions, change of price, rental or other conditions, prior sale, lease or financing, or withdrawal without notice. We include projections, opinions, assumptions or estimates for example only, and they may not represent current or future performance of the property. You and your tax and legal advisors should conduct your own investigation of the property and transaction.

Each Office Independently Owned and Operated [harrellrealestateteam.com/commercial-real-estate/](http://harrellrealestateteam.com/commercial-real-estate/)

LAND FOR SALE

# SURVEY

TBD South Interstate 35, Eddy, TX 76524



Larger Version Available Upon Request

**KW COMMERCIAL**  
3701 West Waco Drive  
Waco, TX 76710

**BRAD HARRELL, CCIM**  
Broker Associate/Senior Director  
O: 254.870.0050  
C: 254.870.0060  
info@BradHarrellCCIM.com  
TX #363789

We obtained the information above from sources we believe to be reliable. However, we have not verified its accuracy and make no guarantee, warranty or representation about it. It is submitted subject to the possibility of errors, omissions, change of price, rental or other conditions, prior sale, lease or financing, or withdrawal without notice. We include projections, opinions, assumptions or estimates for example only, and they may not represent current or future performance of the property. You and your tax and legal advisors should conduct your own investigation of the property and transaction.

Each Office Independently Owned and Operated [harrellrealestateteam.com/commercial-real-estate/](http://harrellrealestateteam.com/commercial-real-estate/)



**LAND FOR SALE**

# AERIAL PHOTOS

TBD South Interstate 35, Eddy, TX 76524



**KW COMMERCIAL**  
3701 West Waco Drive  
Waco, TX 76710

**BRAD HARRELL, CCIM**  
Broker Associate/Senior Director  
O: 254.870.0050  
C: 254.870.0060  
info@BradHarrellCCIM.com  
TX #363789

We obtained the information above from sources we believe to be reliable. However, we have not verified its accuracy and make no guarantee, warranty or representation about it. It is submitted subject to the possibility of errors, omissions, change of price, rental or other conditions, prior sale, lease or financing, or withdrawal without notice. We include projections, opinions, assumptions or estimates for example only, and they may not represent current or future performance of the property. You and your tax and legal advisors should conduct your own investigation of the property and transaction.

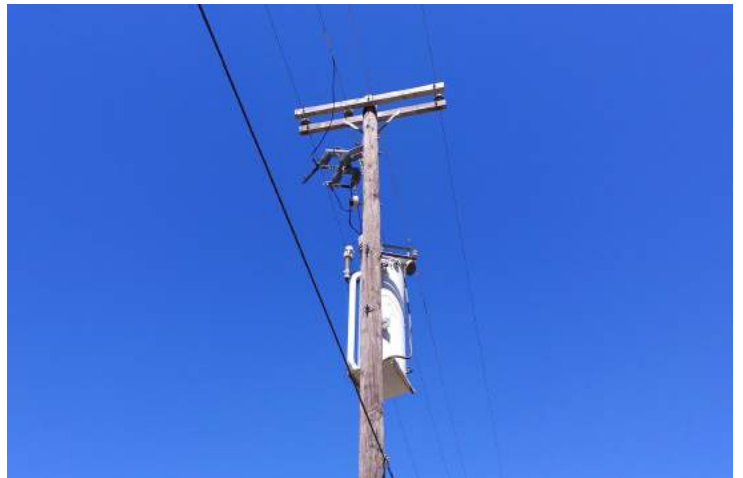
Each Office Independently Owned and Operated [harrellrealestateteam.com/commercial-real-estate/](http://harrellrealestateteam.com/commercial-real-estate/)



**LAND FOR SALE**

# ADDITIONAL PHOTOS

TBD South Interstate 35, Eddy, TX 76524



**KW COMMERCIAL**  
3701 West Waco Drive  
Waco, TX 76710

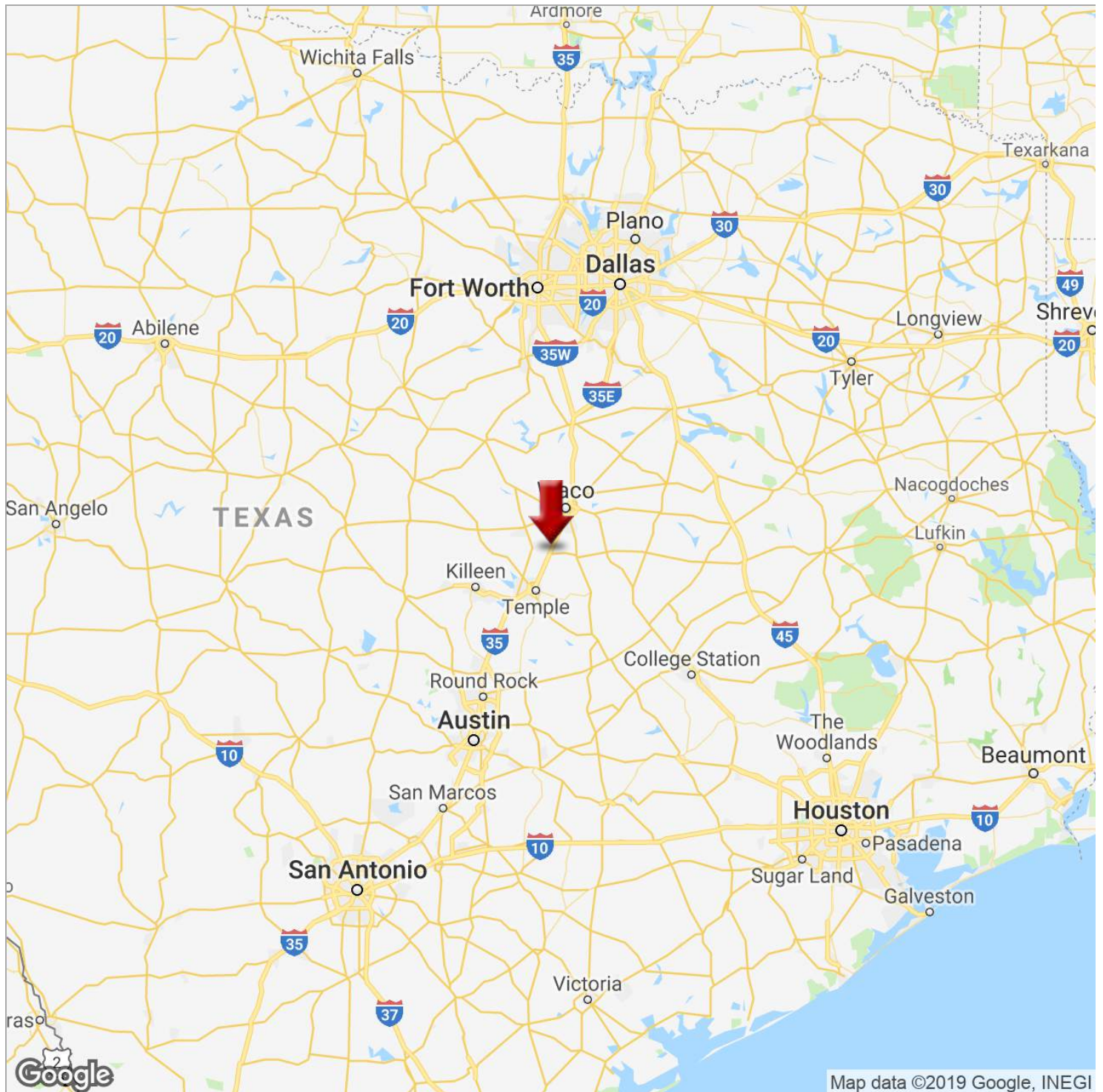
**BRAD HARRELL, CCIM**  
Broker Associate/Senior Director  
O: 254.870.0050  
C: 254.870.0060  
info@BradHarrellCCIM.com  
TX #363789

We obtained the information above from sources we believe to be reliable. However, we have not verified its accuracy and make no guarantee, warranty or representation about it. It is submitted subject to the possibility of errors, omissions, change of price, rental or other conditions, prior sale, lease or financing, or withdrawal without notice. We include projections, opinions, assumptions or estimates for example only, and they may not represent current or future performance of the property. You and your tax and legal advisors should conduct your own investigation of the property and transaction.

Each Office Independently Owned and Operated [harrellrealestateteam.com/commercial-real-estate/](http://harrellrealestateteam.com/commercial-real-estate/)

# LOCATION MAP (TEXAS)

TBD South Interstate 35, Eddy, TX 76524



**KW COMMERCIAL**  
3701 West Waco Drive  
Waco, TX 76710

**BRAD HARRELL, CCIM**  
Broker Associate/Senior Director  
O: 254.870.0050  
C: 254.870.0060  
info@BradHarrellCCIM.com  
TX #363789

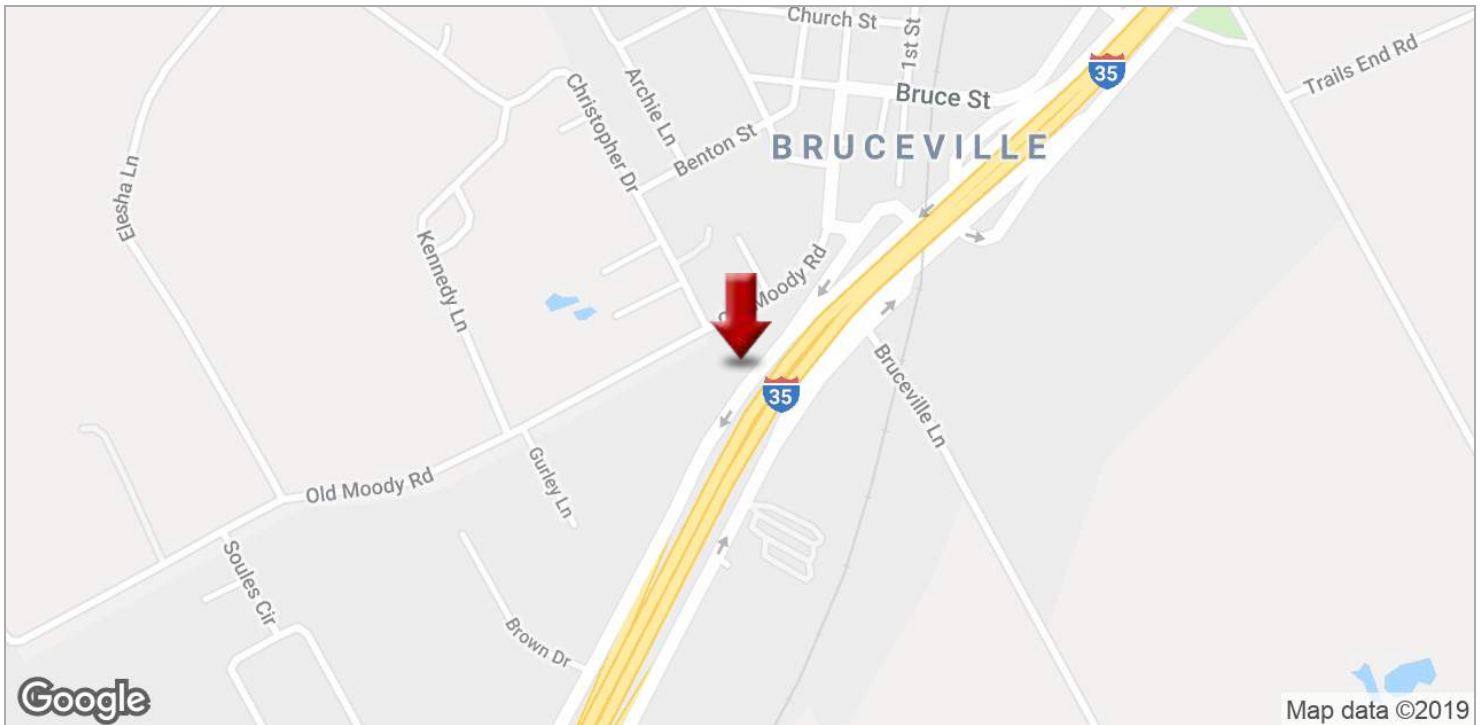
We obtained the information above from sources we believe to be reliable. However, we have not verified its accuracy and make no guarantee, warranty or representation about it. It is submitted subject to the possibility of errors, omissions, change of price, rental or other conditions, prior sale, lease or financing, or withdrawal without notice. We include projections, opinions, assumptions or estimates for example only, and they may not represent current or future performance of the property. You and your tax and legal advisors should conduct your own investigation of the property and transaction.

Each Office Independently Owned and Operated [harrellrealestateteam.com/commercial-real-estate/](http://harrellrealestateteam.com/commercial-real-estate/)



# LOCATION MAPS (LOCAL)

TBD South Interstate 35, Eddy, TX 76524



**KW COMMERCIAL**  
3701 West Waco Drive  
Waco, TX 76710

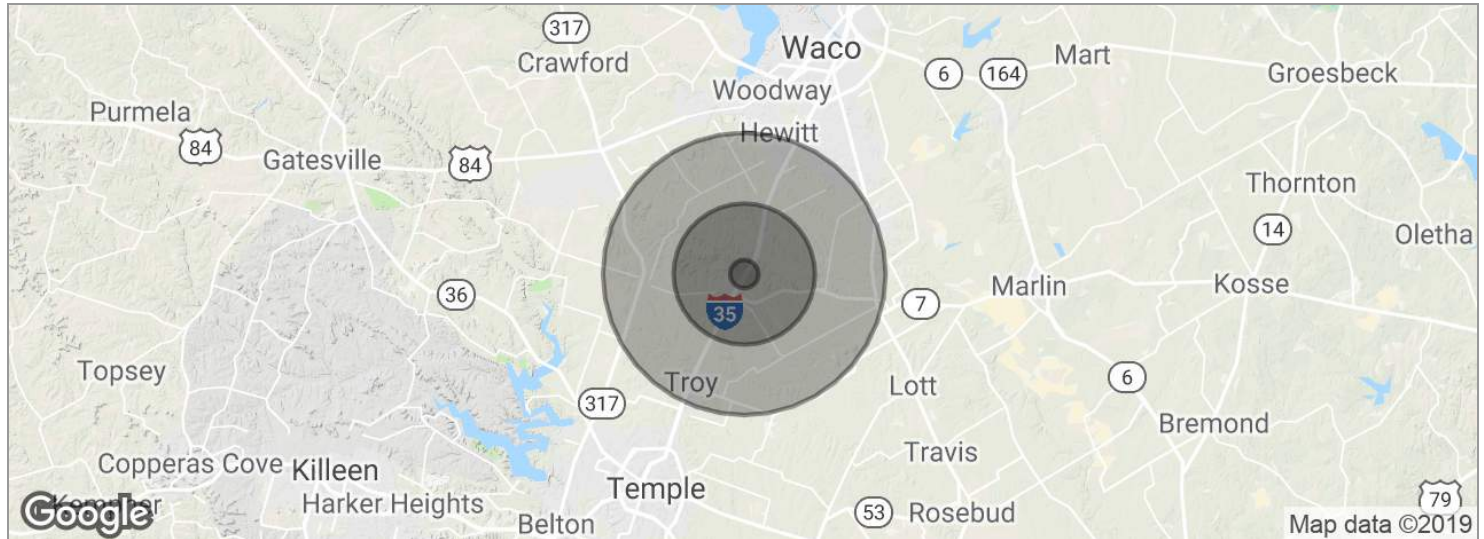
**BRAD HARRELL, CCIM**  
Broker Associate/Senior Director  
O: 254.870.0050  
C: 254.870.0060  
info@BradHarrellCCIM.com  
TX #363789

We obtained the information above from sources we believe to be reliable. However, we have not verified its accuracy and make no guarantee, warranty or representation about it. It is submitted subject to the possibility of errors, omissions, change of price, rental or other conditions, prior sale, lease or financing, or withdrawal without notice. We include projections, opinions, assumptions or estimates for example only, and they may not represent current or future performance of the property. You and your tax and legal advisors should conduct your own investigation of the property and transaction.

Each Office Independently Owned and Operated [harrellrealestateteam.com/commercial-real-estate/](http://harrellrealestateteam.com/commercial-real-estate/)

# DEMOGRAPHICS MAP

TBD South Interstate 35, Eddy, TX 76524



POPULATION	1 MILE	5 MILES	10 MILES
Total population	232	5,384	29,171
Median age	40.1	39.2	37.7
Median age (male)	40.2	39.5	37.9
Median age (Female)	40.0	39.1	37.7

HOUSEHOLDS & INCOME	1 MILE	5 MILES	10 MILES
Total households	81	1,861	10,194
# of persons per HH	2.9	2.9	2.9
Average HH income	\$54,658	\$68,917	\$71,014
Average house value	\$98,517	\$98,626	\$115,944

\* Demographic data derived from 2010 US Census

**KW COMMERCIAL**  
3701 West Waco Drive  
Waco, TX 76710

**BRAD HARRELL, CCIM**  
Broker Associate/Senior Director  
O: 254.870.0050  
C: 254.870.0060  
info@BradHarrellCCIM.com  
TX #363789

We obtained the information above from sources we believe to be reliable. However, we have not verified its accuracy and make no guarantee, warranty or representation about it. It is submitted subject to the possibility of errors, omissions, change of price, rental or other conditions, prior sale, lease or financing, or withdrawal without notice. We include projections, opinions, assumptions or estimates for example only, and they may not represent current or future performance of the property. You and your tax and legal advisors should conduct your own investigation of the property and transaction.

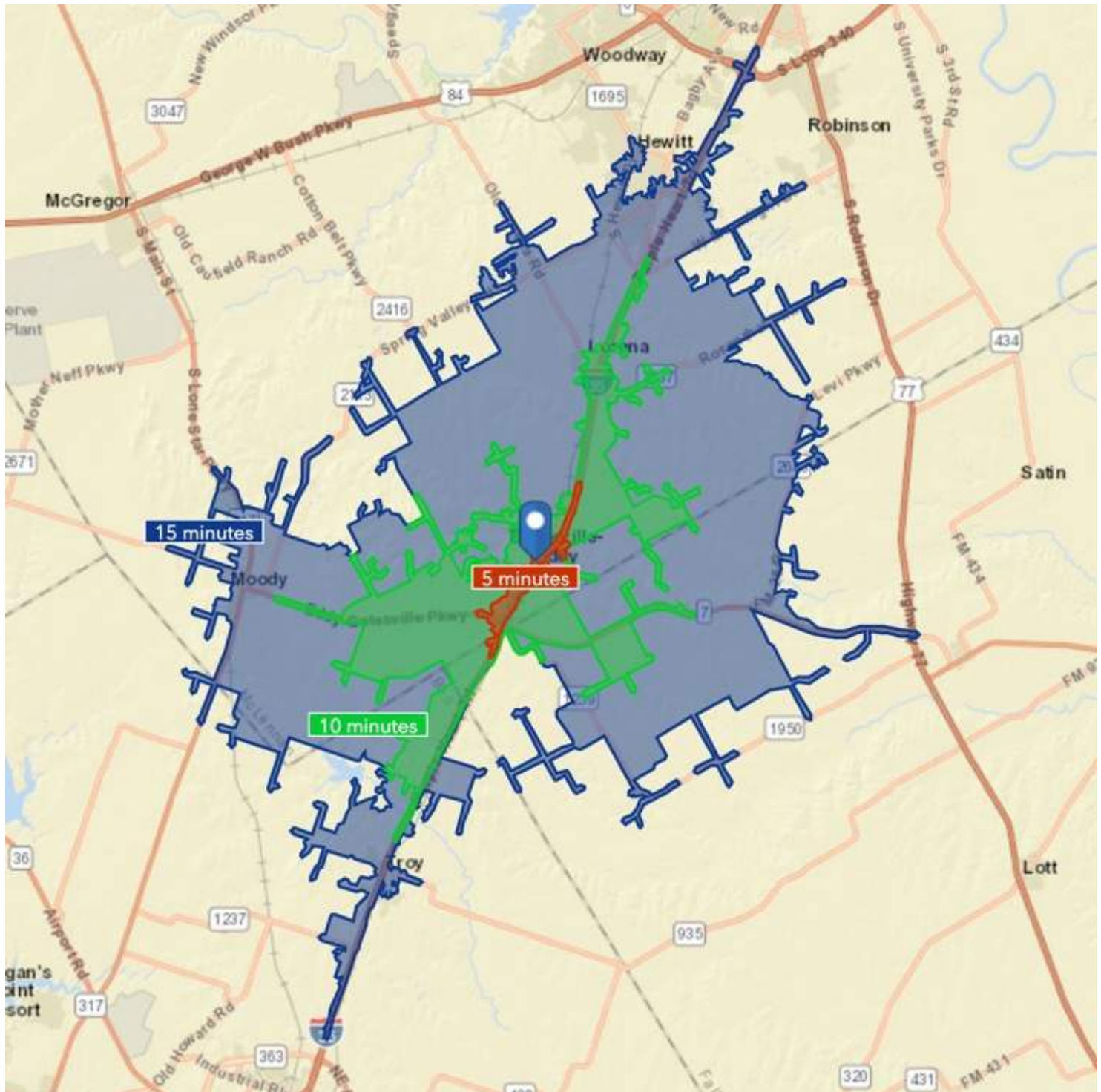
Each Office Independently Owned and Operated [harrellrealestateteam.com/commercial-real-estate/](http://harrellrealestateteam.com/commercial-real-estate/)



**LAND FOR SALE**

# DRIVE TIME DISTANCE MAP

TBD South Interstate 35, Eddy, TX 76524



**KW COMMERCIAL**  
3701 West Waco Drive  
Waco, TX 76710

**BRAD HARRELL, CCIM**  
Broker Associate/Senior Director  
O: 254.870.0050  
C: 254.870.0060  
info@BradHarrellCCIM.com  
TX #363789

We obtained the information above from sources we believe to be reliable. However, we have not verified its accuracy and make no guarantee, warranty or representation about it. It is submitted subject to the possibility of errors, omissions, change of price, rental or other conditions, prior sale, lease or financing, or withdrawal without notice. We include projections, opinions, assumptions or estimates for example only, and they may not represent current or future performance of the property. You and your tax and legal advisors should conduct your own investigation of the property and transaction.

Each Office Independently Owned and Operated [harrellrealestateteam.com/commercial-real-estate/](http://harrellrealestateteam.com/commercial-real-estate/)

## LAND FOR SALE

# TXDOT MAP (2016)

TBD South Interstate 35, Eddy, TX 76524



**KW COMMERCIAL**  
3701 West Waco Drive  
Waco, TX 76710

**BRAD HARRELL, CCIM**  
Broker Associate/Senior Director  
O: 254.870.0050  
C: 254.870.0060  
info@BradHarrellCCIM.com  
TX #363789

We obtained the information above from sources we believe to be reliable. However, we have not verified its accuracy and make no guarantee, warranty or representation about it. It is submitted subject to the possibility of errors, omissions, change of price, rental or other conditions, prior sale, lease or financing, or withdrawal without notice. We include projections, opinions, assumptions or estimates for example only, and they may not represent current or future performance of the property. You and your tax and legal advisors should conduct your own investigation of the property and transaction.

Each Office Independently Owned and Operated [harrellrealestateteam.com/commercial-real-estate/](http://harrellrealestateteam.com/commercial-real-estate/)



# ZONING MAP

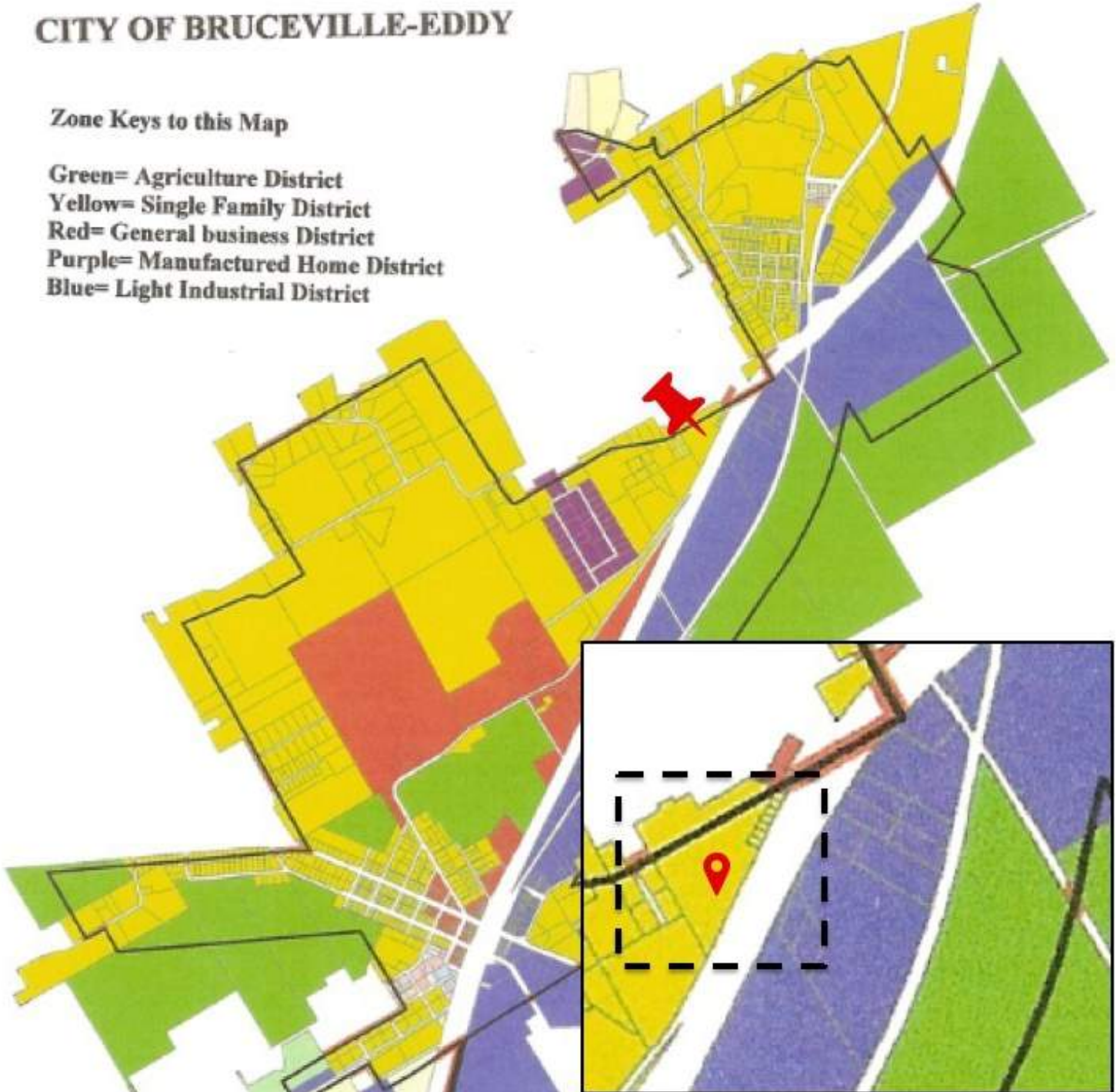
TBD South Interstate 35, Eddy, TX 76524



## CITY OF BRUCEVILLE-EDDY

### Zone Keys to this Map

Green= Agriculture District  
Yellow= Single Family District  
Red= General business District  
Purple= Manufactured Home District  
Blue= Light Industrial District



**KW COMMERCIAL**  
3701 West Waco Drive  
Waco, TX 76710

**BRAD HARRELL, CCIM**  
Broker Associate/Senior Director  
O: 254.870.0050  
C: 254.870.0060  
info@BradHarrellCCIM.com  
TX #363789

We obtained the information above from sources we believe to be reliable. However, we have not verified its accuracy and make no guarantee, warranty or representation about it. It is submitted subject to the possibility of errors, omissions, change of price, rental or other conditions, prior sale, lease or financing, or withdrawal without notice. We include projections, opinions, assumptions or estimates for example only, and they may not represent current or future performance of the property. You and your tax and legal advisors should conduct your own investigation of the property and transaction.

Each Office Independently Owned and Operated [harrellrealestateteam.com/commercial-real-estate/](http://harrellrealestateteam.com/commercial-real-estate/)

**LAND FOR SALE**

# FEMA FLOOD MAP

TBD South Interstate 35, Eddy, TX 76524



**KW COMMERCIAL**  
3701 West Waco Drive  
Waco, TX 76710

**BRAD HARRELL, CCIM**  
Broker Associate/Senior Director  
O: 254.870.0050  
C: 254.870.0060  
info@BradHarrellCCIM.com  
TX #363789

We obtained the information above from sources we believe to be reliable. However, we have not verified its accuracy and make no guarantee, warranty or representation about it. It is submitted subject to the possibility of errors, omissions, change of price, rental or other conditions, prior sale, lease or financing, or withdrawal without notice. We include projections, opinions, assumptions or estimates for example only, and they may not represent current or future performance of the property. You and your tax and legal advisors should conduct your own investigation of the property and transaction.

Each Office Independently Owned and Operated [harrellrealestateteam.com/commercial-real-estate/](http://harrellrealestateteam.com/commercial-real-estate/)





# Information About Brokerage Services

*Texas law requires all real estate license holders to give the following information about brokerage services to prospective buyers, tenants, sellers and landlords.*

11-2-2015



## TYPES OF REAL ESTATE LICENSE HOLDERS:

- **A BROKER** is responsible for all brokerage activities, including acts performed by sales agents sponsored by the broker.
- **A SALES AGENT** must be sponsored by a broker and works with clients on behalf of the broker.

## A BROKER'S MINIMUM DUTIES REQUIRED BY LAW (A client is the person or party that the broker represents):

- Put the interests of the client above all others, including the broker's own interests;
- Inform the client of any material information about the property or transaction received by the broker;
- Answer the client's questions and present any offer to or counter-offer from the client; and
- Treat all parties to a real estate transaction honestly and fairly.

## A LICENSE HOLDER CAN REPRESENT A PARTY IN A REAL ESTATE TRANSACTION:

**AS AGENT FOR OWNER (SELLER/LANDLORD):** The broker becomes the property owner's agent through an agreement with the owner, usually in a written listing to sell or property management agreement. An owner's agent must perform the broker's minimum duties above and must inform the owner of any material information about the property or transaction known by the agent, including information disclosed to the agent or subagent by the buyer or buyer's agent.

**AS AGENT FOR BUYER/TENANT:** The broker becomes the buyer/tenant's agent by agreeing to represent the buyer, usually through a written representation agreement. A buyer's agent must perform the broker's minimum duties above and must inform the buyer of any material information about the property or transaction known by the agent, including information disclosed to the agent by the seller or seller's agent.

**AS AGENT FOR BOTH - INTERMEDIARY:** To act as an intermediary between the parties the broker must first obtain the written agreement of *each party* to the transaction. The written agreement must state who will pay the broker and, in conspicuous bold or underlined print, set forth the broker's obligations as an intermediary. A broker who acts as an intermediary:

- Must treat all parties to the transaction impartially and fairly;
- May, with the parties' written consent, appoint a different license holder associated with the broker to each party (owner and buyer) to communicate with, provide opinions and advice to, and carry out the instructions of each party to the transaction.
- Must not, unless specifically authorized in writing to do so by the party, disclose:
  - that the owner will accept a price less than the written asking price;
  - that the buyer/tenant will pay a price greater than the price submitted in a written offer; and
  - any confidential information or any other information that a party specifically instructs the broker in writing not to disclose, unless required to do so by law.

**AS SUBAGENT:** A license holder acts as a subagent when aiding a buyer in a transaction without an agreement to represent the buyer. A subagent can assist the buyer but does not represent the buyer and must place the interests of the owner first.

## TO AVOID DISPUTES, ALL AGREEMENTS BETWEEN YOU AND A BROKER SHOULD BE IN WRITING AND CLEARLY ESTABLISH:

- The broker's duties and responsibilities to you, and your obligations under the representation agreement.
- Who will pay the broker for services provided to you, when payment will be made and how the payment will be calculated.

**LICENSE HOLDER CONTACT INFORMATION:** This notice is being provided for information purposes. It does not create an obligation for you to use the broker's services. Please acknowledge receipt of this notice below and retain a copy for your records.

Global Realty Partners LLC			
KW Commercial	9003002	klrw552@kw.com	(254) 751-7900
Licensed Broker /Broker Firm Name or Primary Assumed Business Name	License No.	Email	Phone
Al Rincon	525285	alrincon@kw.com	(254) 716-3642
Designated Broker of Firm	License No.	Email	Phone
Amanda LaRue	543380	alarue@kw.com	(254) 315-0138
Licensed Supervisor of Sales Agent/ Associate	License No.	Email	Phone
Brad Harrell, CCIM	363789	info@BradHarrellCCIM.com	(254) 870-0050
Sales Agent/Associate's Name	License No.	Email	Phone

\_\_\_\_\_  
Buyer/Tenant/Seller/Landlord Initials

\_\_\_\_\_  
Date