



OFFICE CONDO FOR SALE

Azalea Woods Office Condo

1304 AZALEA COURT MYRTLE BEACH, SC 29577



B.W. "RUSTY" HELM

843.626.3400

rusty@keystonecommercial.com

DREW LANGWAY

843.626.3400

drew@keystonecommercial.com

RYAN EARNEST

843.626.3400

ryane@keystonecommercial.com

4706 Oleander Drive, Myrtle Beach, SC 29577-3537 | www.keystonecommercial.com



Azalea Woods Office Condo

1304 AZALEA COURT
MYRTLE BEACH, SC 29577



OFFERING SUMMARY: OFFICE CONDO FOR SALE

Sale Price:	\$199,000
Building Size Approximately:	2,400 SF
Lot Size Approximately:	0.63 Acres
Zoning:	Office/Professional/Institutional (OPI) District, County of Horry, SC

[Zoning Map \(Click Here\)](#)

[Zoning Code \(Click Here\)](#)

PROPERTY OVERVIEW

OFFERED FOR SALE is this Office Condo located in the Office Park between Robert Grissom Parkway and Highway 17 Bypass with easy access to Highway 31.

PROPERTY HIGHLIGHTS

- Space is Approximately 2,400 SF
- Site consists of Approximately 0.63 Acres with 100' frontage on Azalea Court
- 8 Private Offices, Lobby Entrance, Large Conference Room, Receptionist Office, 2 Restrooms, Storage Area, Equipment Room, 2 Patio's
- Framed Wood on Concrete Slab Foundation
- Paved Parking Surface with 45 Spaces, with 2 Handicapped Spaces
- Extensive and Mature Landscaping
- POA Dues are currently \$1,800/ Quarter (includes insurance)
- Identified as: PIN #42011030011, County of Horry, SC.
- Annual Real Estate Taxes 2019- \$2,259, County of Horry, SC.

B. W. "RUSTY" HELM
843.626.3400
rusty@keystonecommercial.com

DREW LANGWAY
843.626.3400
drew@keystonecommercial.com

RYAN EARNEST
843.626.3400
ryane@keystonecommercial.com



Azalea Woods Office Condo

1304 AZALEA COURT
MYRTLE BEACH, SC 29577



B. W. "RUSTY" HELM
843.626.3400
rusty@keystonecommercial.com

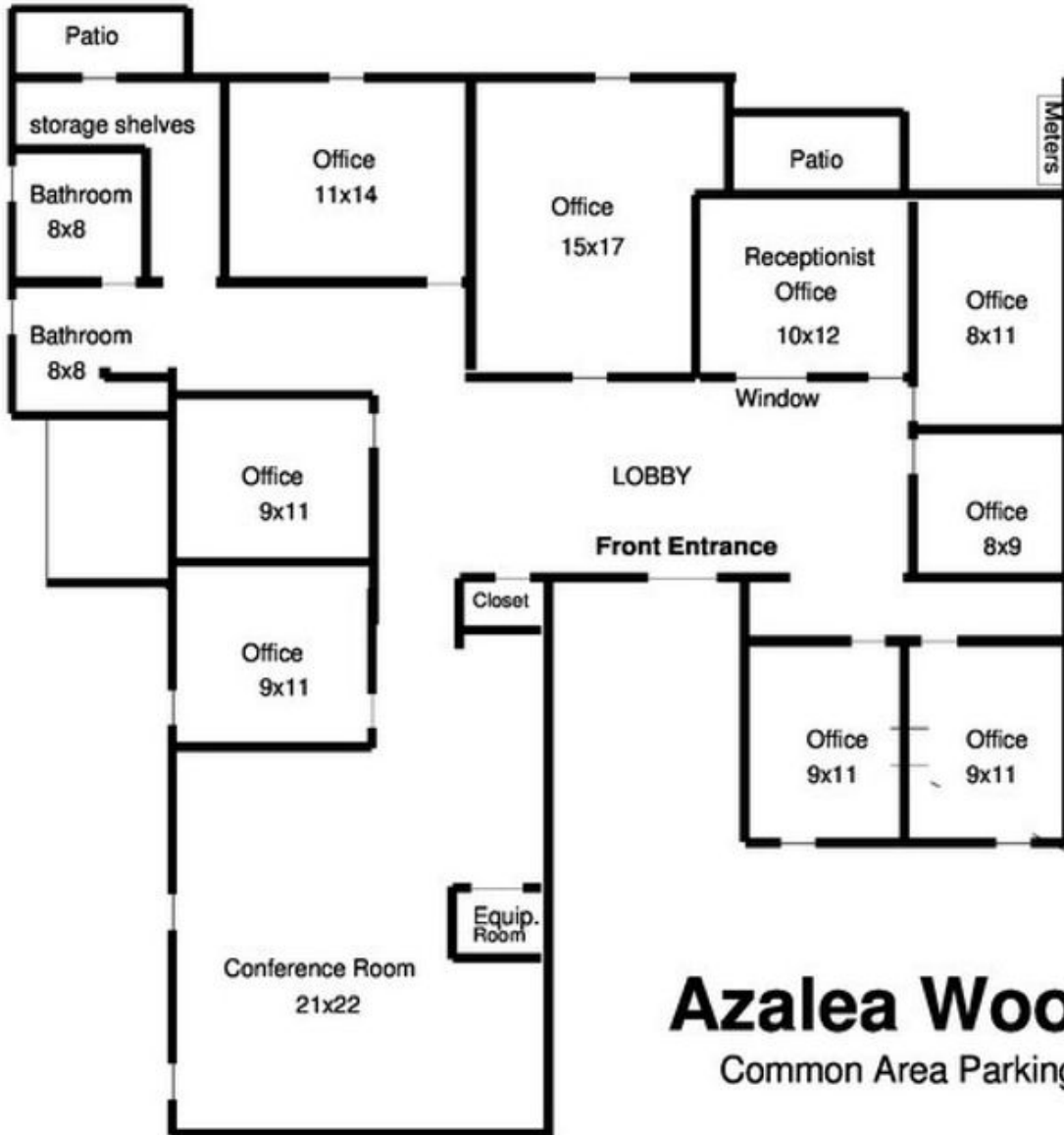
DREW LANGWAY
843.626.3400
drew@keystonecommercial.com

RYAN EARNEST
843.626.3400
ryane@keystonecommercial.com



Azalea Woods Office Condo

1304 AZALEA COURT
MYRTLE BEACH, SC 29577



Azalea Woods
Common Area Parking

B. W. "RUSTY" HELM
843.626.3400
rusty@keystonecommercial.com

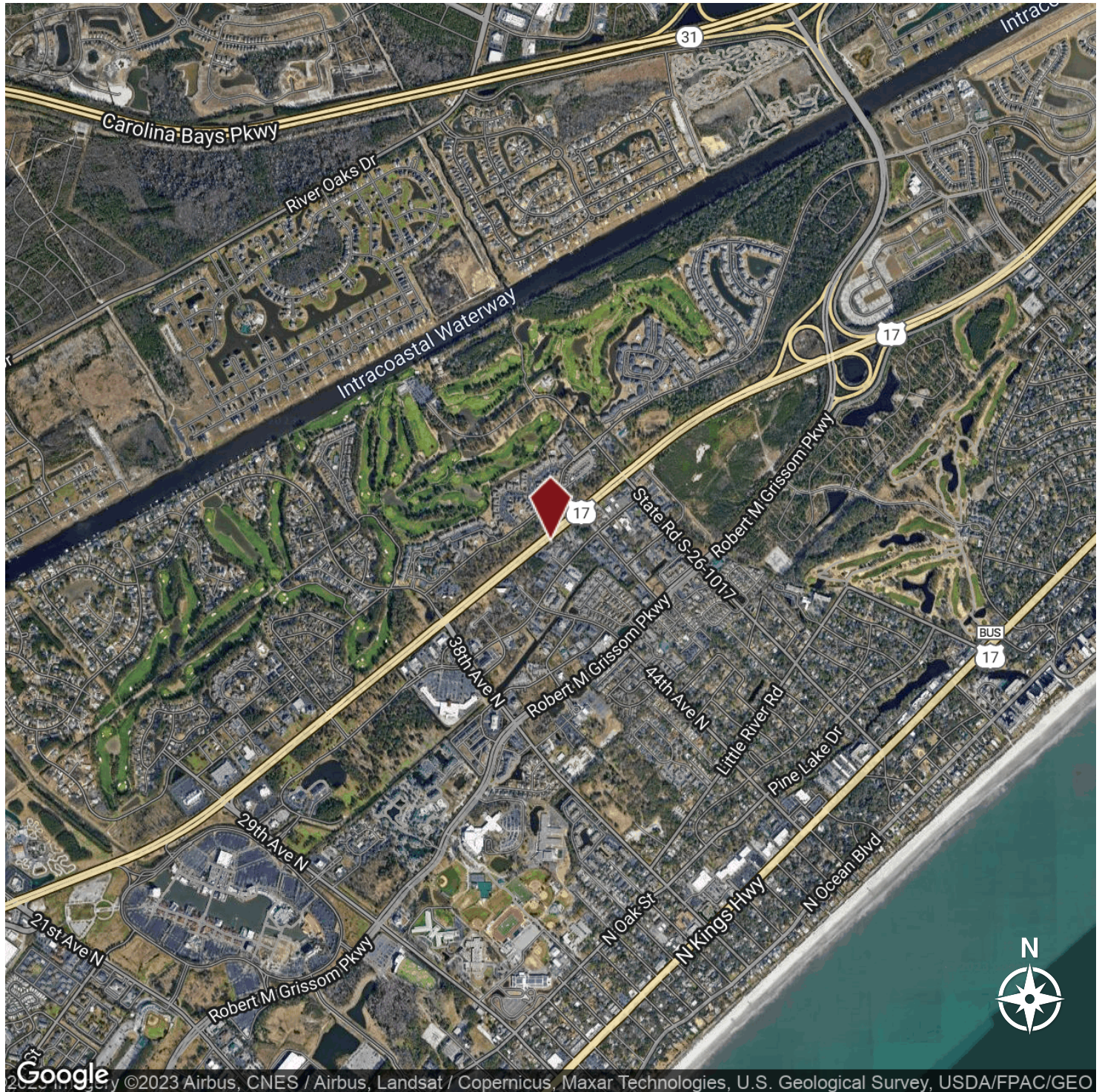
DREW LANGWAY
843.626.3400
drew@keystonecommercial.com

RYAN EARNEST
843.626.3400
ryane@keystonecommercial.com



Azalea Woods Office Condo

1304 AZALEA COURT
MYRTLE BEACH, SC 29577



B. W. "RUSTY" HELM

843.626.3400

rusty@keystonecommercial.com

DREW LANGWAY

843.626.3400

drew@keystonecommercial.com

RYAN EARNEST

843.626.3400

ryane@keystonecommercial.com



THE REGION

#1

BEST PLACES
PEOPLE ARE
MOVING TO

US News & World Report, 2019

Ranked # 6

BEST AFFORDABLE
Family Vacation

US News & World Report, 2019

BEST FAMILY BEACH VACATION
RANKED #7

US News & World Report, 2019

**ONE OF THE
MOST EXCELLENT
CITIES FOR EXPERIENCES**

Trip Advisor, 2018

**TOP DESTINATION
FOR RETIREES
RANKED #10**

Where to Retire Magazine, 2018

MYRTLE BEACH, SC. Metropolitan Statistical Area

The Grand Strand has some of the most beautiful beaches in the world, ocean and river water sports, over 100 golf courses, 1,500 restaurants, numerous theatres offering international recording artists and Broadway Shows. The Myrtle Beach area enjoys an outstanding quality of life. The temperate climate, cultural and recreational opportunities, and robust economy continue to draw an increasing number of visitors and people relocating from other areas. Considered one of America's top vacation destinations, the area hosts an estimated 16 million visitors annually. Myrtle Beach is home to Coastal Carolina University and Horry-Georgetown Technical College, and the area has an impressive labor force of professional, technical, and skilled personnel.

	2010	2018	2023
Population	376,722	467,292	533,198
<small>U.S. Census Bureau</small>			
Total Households	158,522	196,299	244,089
<small>U.S. Census Bureau</small>			
Avg. Household Income		\$68,058	\$77,206
<small>U.S. Census Bureau</small>			

EMPLOYMENT, Bureau of Labor Statistics



MAY 2018:
3.6%

MAY 2019
4.1%

UNEMPLOYMENT RATE
Bureau of Labor Statistics



Myrtle Beach & the Grand Strand

The Grand Strand has some of the most beautiful beaches in the world, ocean and river water sports, over 100 golf courses, 1,500 restaurants, and numerous theatres offering international recording artists and Broadway Shows. The Myrtle Beach area enjoys an outstanding quality of life. The temperate climate, cultural and recreational opportunities, and robust economy continue to draw an increasing number of visitors and people relocating from other areas. Considered one of America's top vacation destinations, the area hosts an estimated 16 million visitors annually. Myrtle Beach is home to Coastal Carolina University and Horry-Georgetown Technical College, and the area has an impressive labor force of professional, technical, and skilled personnel.

Beaches

Hotels, condos, and resorts create a mini-skyline along downtown Myrtle Beach, where the sandy beaches are long and deep and the crowds are family-oriented. The Myrtle Beach State Park provides more than 300 acres of piney woods and access to a sandy beach; cast your line into the ocean water from a fishing pier.

Shopping

Specialty shops line the pathways of the shopping centers at Barefoot Landing and Broadway at the Beach, and fireworks in the summer lend a festive air. Bargain hunt for brands such as Reebok and Polo Ralph Lauren at Tanger Outlets. Urban critics applaud the work-play-live development at The Market Common, which offers restaurants, a movie theater, and residential homes atop upscale storefronts.

Eating and Drinking

Virtually every major chain and sports-celebrity restaurant is found here, whether it's the NASCAR Sports Grill, House of Blues, or Greg Norman's Australian Grill. Away from the chains, look for waterside spots serving fresh local seafood in unvarnished Low Country preparations. Or give decorum a rest and head to, Calvin Gilmore's Carolina Opry which packs in crowds nightly.

Attractions

Renowned for its thrilling entertainment venues and exciting attractions, Myrtle Beach is one of the nation's most sought after tourist destinations. Meet locals on the golf course -- there are more than 100 to choose from. Myrtle Beach Board Walk, 1.2 miles long, named the nation's #3 boardwalk by National Geographic. Myrtle Waves, one of the largest water parks on the east coast. Family Kingdom Amusement Park, a classic seaside amusement park, named #5 best amusement park in the country. Broadway at the Beach, a large entertainment festival complex including the Pavilion Nostalgia Park, Ripley's Aquarium, Magiquest, Hard Rock Cafe, and Jimmy Buffett's Margaritaville. Also, look for the Skywheel, NASCAR SpeedParks, Wild Water and Wheels, Ocean Water Sports, Alabama Theater, Medieval Times, and House of Blues. The list of exciting family friendly entertainment is abundant and is waiting just for you.