

# 33 SMART MOBILITY CORRIDOR

The 33 Smart Mobility Corridor is one of the nation's ultimate smart mobility playgrounds. The corridor offers a 35-mile stretch of connected highway with on-the-road infrastructure that allows for the development and testing of CV technologies in a real-world, open and closed, all-weather environment.

### ULTIMATE PLAYGROUND

- › 35-mile stretch of Continuous Connected Vehicle Infrastructure
- › 94 Road Side Units & 1,000 On Board Units
- › 27 Smart Signals in City of Marysville; 5 in City of Dublin
- › 147 Smart Signals in City of Columbus (Regional Partners)
- › 432-strand Redundant Fiber Network
- › Closed Testing at 540-acre TRC SMARTCenter
- › Open Testing on US-33, Connected Marysville & Dublin, & Smart Columbus Platforms
- › All-Weather Testing Environment
- › Testing in Rural, Exurban, Suburban, and Urban Environments
- › Testing of Unmanned Aircraft Systems
- › \$500 million Being Invested in Regional Smart Mobility Infrastructure

### ACADEMIA & INDUSTRY PARTNERS

- › Transportation Research Center
- › NHTSA Vehicle Research and Test Center
- › OSU Center for Automotive Research
- › Honda-OSU Partnership
- › Automotive & Mobility Innovation Center

### AUTOMOTIVE JUGGERNAUT

- › 70 + Automotive Companies within Corridor
- › 150 + Automotive Suppliers within Region
- › Over 645,000 Vehicles Produced Annually within Corridor
- › Smart Mobility Incubator and Collaboration Space
- › Multiple Sites for Development, including the 33 Innovation Park

### BEST IN TALENT

#### COLUMBUS REGION

- › One of the highest concentrations of college students in the nation with approximately 134,000 students
- › 52 Colleges and Universities
- › 18,000+ Automotive Employees

#### 33 SMART MOBILITY CORRIDOR

- › On average, 7-times more Engineers than Ann Arbor, Michigan MSA and Las Vegas, Nevada MSA, which are peer CV regions.
- › 25% of workforce dedicated to Research & Development

### TRANSPORTATION RESEARCH CENTER

- › Nation's largest independent vehicle testing facility and proving grounds
- › NHTSA Vehicle Research Center
- › 24/7 testing with 4,500 acres of road courses/trails, 7.5-mile test track, and 50-acre Vehicle Dynamics Area
- › 540-acre SMARTCenter allows testing of CAVs
- › Offers real life traffic scenarios

### CONNECTED MARYSVILLE

- › 27 Smart Intersections
- › 1,000 Connected Vehicles
- › Testing of CV Applications
- › Online Data Repository
- › Fiber Connectivity

### 33 INNOVATION PARK

- › 206-acre site for smart technology companies

### CITY OF DUBLIN

- › 5 Smart Intersections
- › Connected Roundabout
- › Smart Parking Technology
- › Fiber Connectivity

### DRIVEOHIO

- › Statewide initiative that organizes and accelerates smart vehicle and CV projects
- › Single point of contact
- › Develops goals, policies, and operating standards

### CENTER FOR AUTOMOTIVE RESEARCH

- › University research center focused on energy, safety, the environment, and improving mobility
- › State-of-the-art facilities for students, faculty, research staff and industry partners

### SMART COLUMBUS

- › Technological backbone of future smart city projects
- › Measures performance and progress of USDOT initiatives
- › Focused on enabling technologies for a CV environment, enhancing human services, and developing emerging technologies

East Liberty

Marysville

Dublin

Columbus

### AUTOMOTIVE MOBILITY INNOVATION CTR.

- › Tech and business incubator
- › High-performance computing
- › Fiber connectivity
- › CAD/CAE talent
- › 3D scanning capabilities
- › Physical prototyping

### UNMANNED AIRCRAFT SYSTEMS

- › Partnership of DriveOhio's UAS Center and The Ohio State University
- › Drones monitor traffic and road conditions
- › Data Sent to Ohio Traffic Management Center

### PLANNED CAV APPLICATIONS

PEDESTRIAN CROSSWALK WARNING	Inform drivers of pedestrian presence
REDUCE SPEED ZONE WARNING/LANE CLOSURE	Inform drivers of travel lane disruptions
RED LIGHT VIOLATION WARNING	Inform drivers of probable violation
CURVE SPEED WARNING AT INTERCHANGE RAMPS	Inform driver of high speed approach

The **33 Smart Mobility Corridor** is a part of the **Columbus Region Connected Vehicle Ecosystem.**

“...one of the greatest collections of engineering and production talent in the world.”

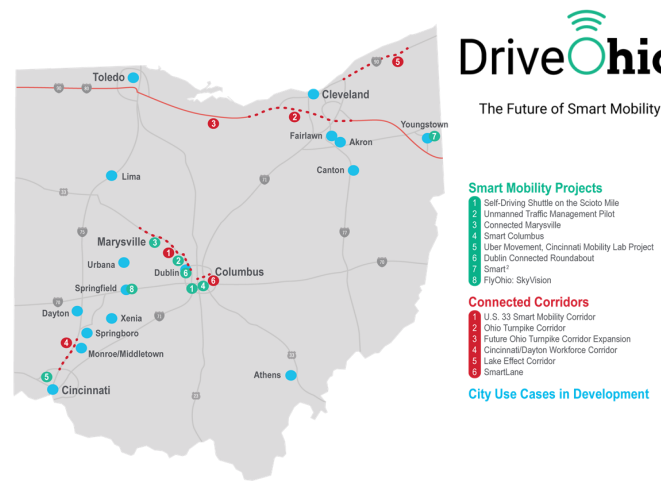
- Hidenobu Iwata, Former President & CEO  
Honda of America



## DRIVEOHIO

WWW.DRIVE.OHIO.GOV

**DriveOhio** serves as the hub for all things autonomous and connected in Ohio. As the single point of contact for all of Ohio's smart mobility initiatives and advancements, DriveOhio fosters cooperation and collaboration, offers faster access to resources by breaking down government barriers, and improves efficiencies for people and organizations that want to be part of this industry.

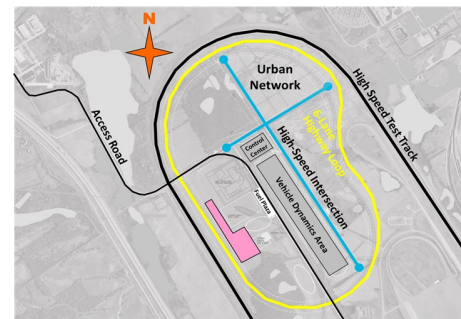


## TRC SMARTCENTER

WWW.TRCPG.COM

The Transportation Research Center's new 540-acre **SMARTCenter** is a state of the art hub that allows the testing of highly automated and connected vehicles before deployment on public roads in a safe and controlled environment. The safe environment allows engineers to test challenging, real life, traffic scenarios without the risk to people or property. The SMARTCenter features:

- › the longest and widest connected, signalized intersection in the industry
- › an urban network consisting of movable intersections, roundabouts, and oblique intersection scenarios
- › a 10,000 SF control building with garage and office space
- › full site access to DSRC and high speed wireless communication
- › an underground power distribution and fiber network



THE NATION'S PREMIER SMART MOBILITY PROVING GROUNDS.

## AUTOMOTIVE & MOBILITY INNOVATION CENTER

WWW.AMICOHIO.ORG

The **AMIC** is a 20,000 SF center of innovation that will be located at the 33 Innovation Park in Marysville. It will house the following:

- › Entrepreneurial center and business incubator
- › Office and co-working space for emerging companies
- › Offices for state agencies involved in automotive and smart mobility
- › Testing lab and data center
- › Space for K-12 and higher education institutions promoting talent and entrepreneurial development
- › Display area to promote smart mobility and to educate citizens on the evolution of mobility
- › Co-working space that will inspire innovative thought and collaboration among the AMIC tenants, automotive, and smart mobility companies
- › Space for a Traffic Management System operations office

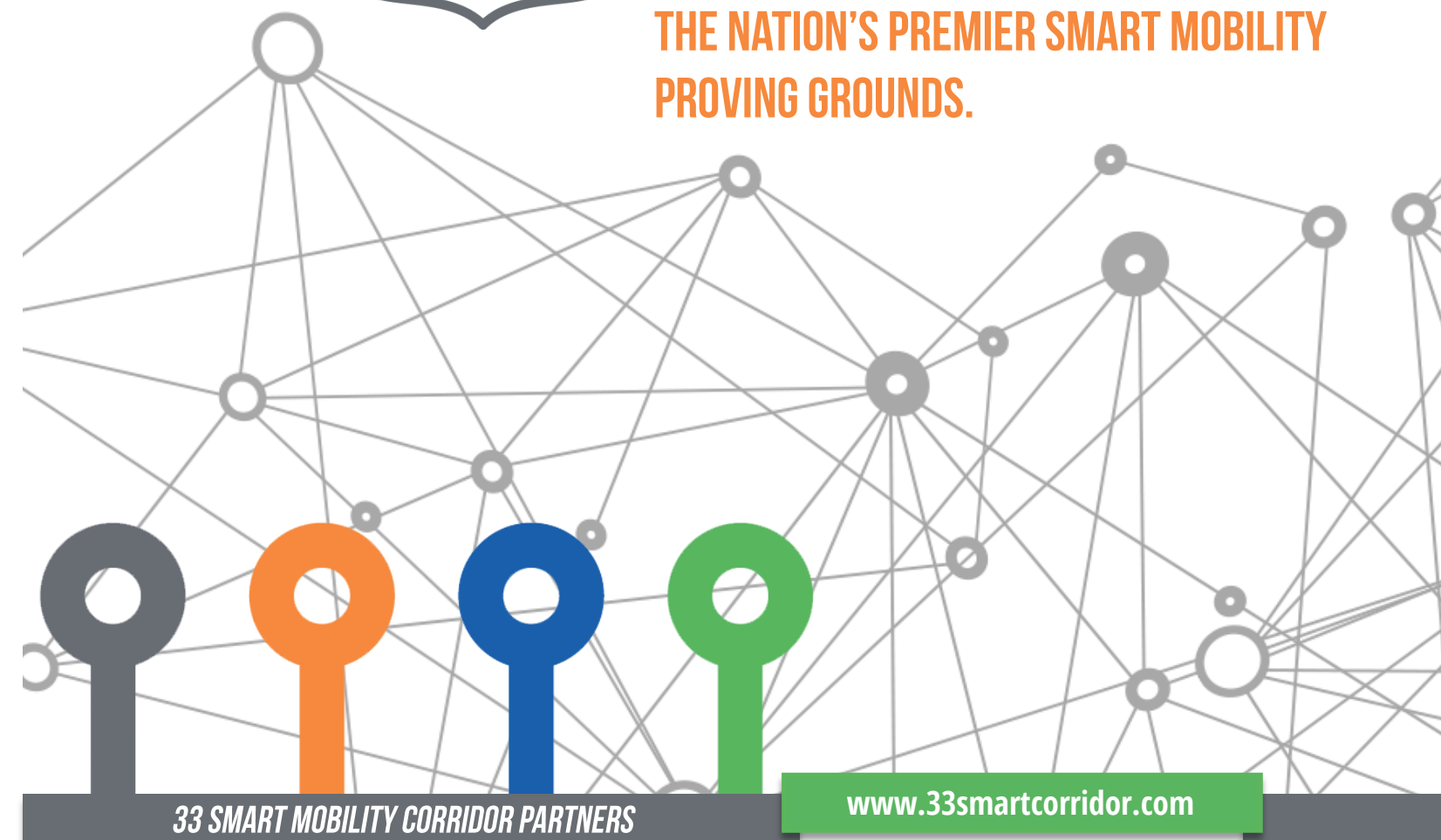


## 33 INNOVATION PARK

WWW.33INNOVATIONPARK.COM

The 206-acre 33 Innovation Park in Marysville features brand new utility infrastructure, including more fiber optic capacity than anyone can imagine. With an ideal location, freeway access, competitive lot prices, and flexible development options, the 33 Innovation Park is the perfect location for smart mobility companies. The 33 Innovation Park features:

- › M-2 Zoning
- › Utilities, Roadway, & Due Diligence completed
- › Flexible lot arrangements and BTS options
- › Protective covenants to protect investments
- › Targeted Users: Automotive Manufacturing, Advanced Manufacturing, Research & Development, Smart Mobility
- › Price: \$60,000 to \$80,000 per acre



UNION COUNTY - MARYSVILLE ECONOMIC DEVELOPMENT | 227 EAST FIFTH STREET, MARYSVILLE, OHIO 43040 | 937-642-6279 | [WWW.33SMARTCORRIDOR.COM](http://WWW.33SMARTCORRIDOR.COM)

**DriveOhio**  
The Future of Smart Mobility

**City of Dublin**  
OHIO, USA

**City of Marysville**

**UNION COUNTY OHIO**  
grow with us.

**THE OHIO STATE UNIVERSITY**

**TRC** Transportation Research Center Inc.