

JAMESON.

FOR LEASE OR SALE

GROUND FLOOR RETAIL/OFFICE SPACE

228 S Racine Ave | Chicago, IL 60607



Rick Gardella
Vice President
312.296.9669
rgardella@jameson.com

JAMESONCOMMERCIAL.COM

©Jameson Real Estate LLC. All information provided herein is from sources deemed reliable. No representation is made as to the accuracy thereof & it is submitted subject to errors, omissions, changes, prior sale or lease, or withdrawal without notice. Projections, opinions, assumptions & estimates are presented as examples only & may not represent actual performance. Consult tax & legal advisors to perform your own investigation.

JAMESON.



LEASE OVERVIEW

LEASE PRICE:	\$30 PSF NNN
SPACE SIZE:	2,300 +/- SF
YEAR BUILT:	2019
ZONING:	Commercial
MARKET:	Chicago
CROSS STREETS:	Racine & Jackson
ASSESSMENT:	\$280.66/month

AREA TENANTS

- Target
- Starbucks
- Randolph Street's "Restaurant Row"
- Chase Bank
- Dunkin' Donuts
- Whole Foods
- Mariano's

PROPERTY DESCRIPTION

Approx. 2300 RSF
Divisible into 1050 and 1257 RSF Suites
Private Entrance
Excellent Visibility and Window Line
Individual HVAC and Control
Private Washrooms
Parking Available
Attentive Local Management
Tenant Must Show Proof of Insurance
Condo Unit Available for Sale @ \$699,000

PROPERTY HIGHLIGHTS

- Condo Unit Available for Sale @ \$699,000
- Approx. 2300 RSF
- Divisible into 1050 and 1257 RSF Suites
- Private Entrance
- Excellent Visibility and Window Line
- Individual HVAC and Control
- Private Washrooms
- Parking Available
- Attentive Local Management

AREA AND TRANSPORTATION HIGHLIGHTS

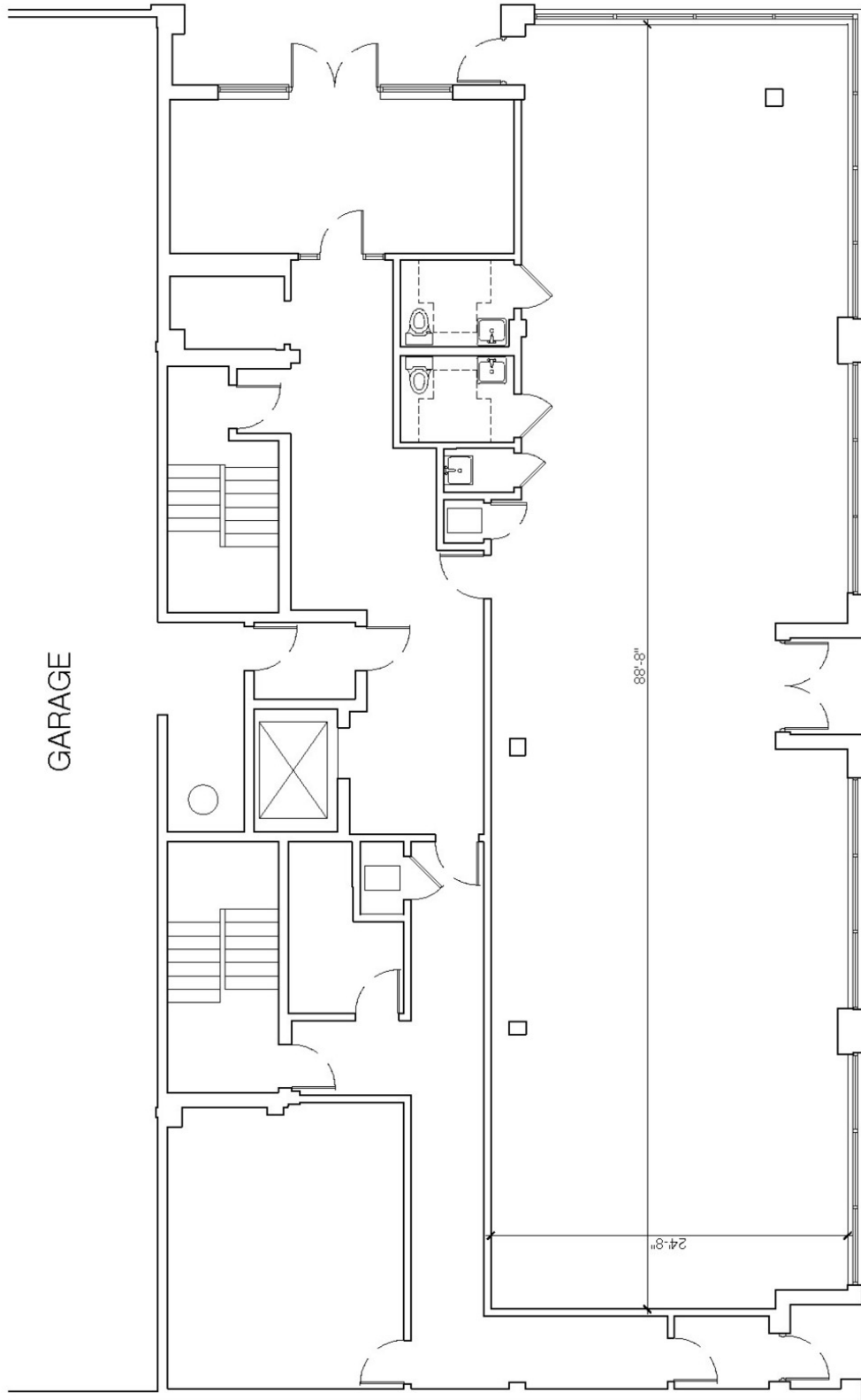
- One block from Racine Blue Line L stop
- One mile from Union Station
- Within one mile of I-90/I-290 interchange
- Steps from 126 bus stops

JAMESON.

FLOOR PLAN - COMPLETE

228 S Racine Ave, Chicago, IL 60607

Negotiable



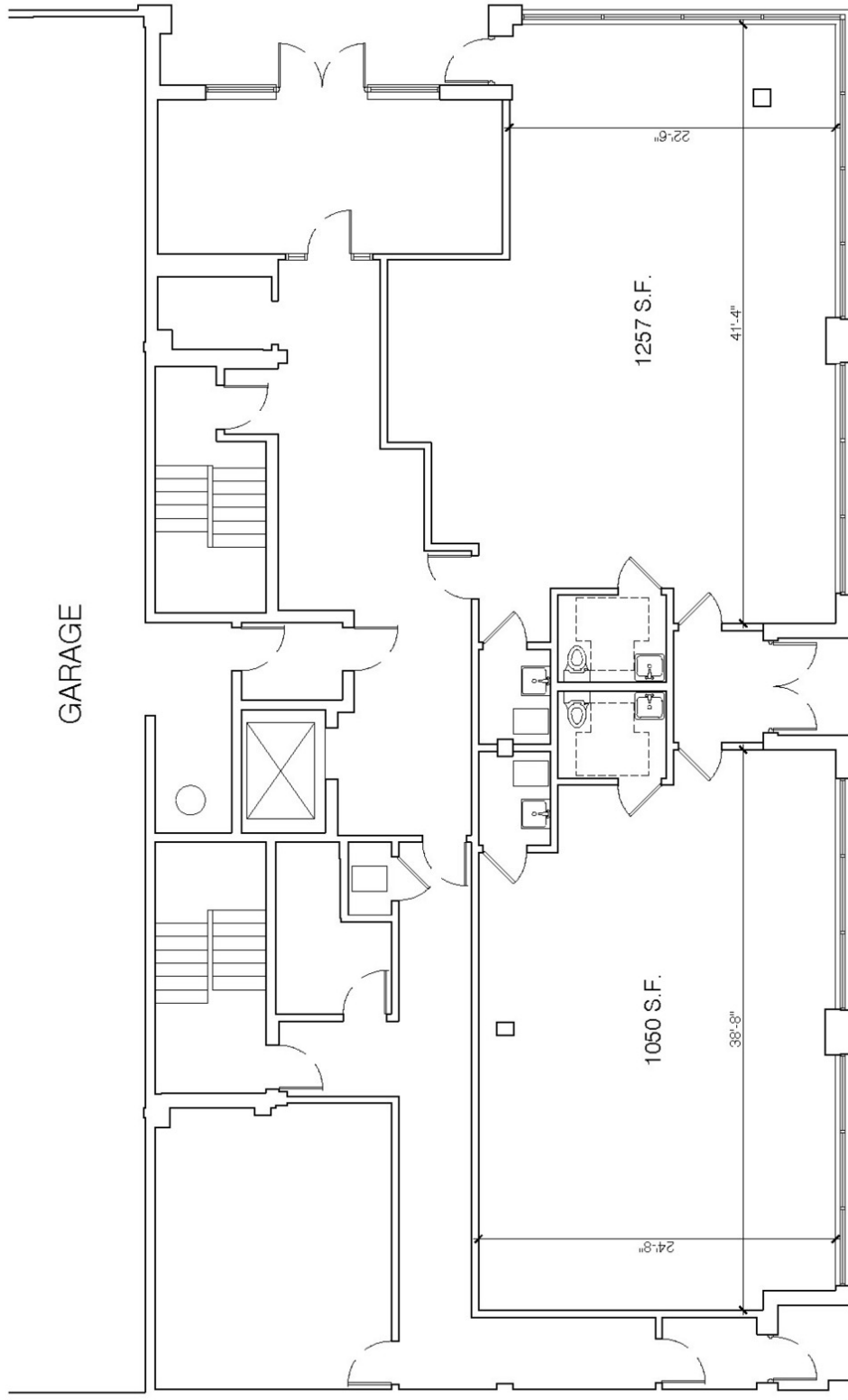
236 S. RACINE AVE.
1ST. FLOOR PLAN

JAMESON.

FLOOR PLAN - SUBDIVIDED

228 S Racine Ave, Chicago, IL 60607

Negotiable

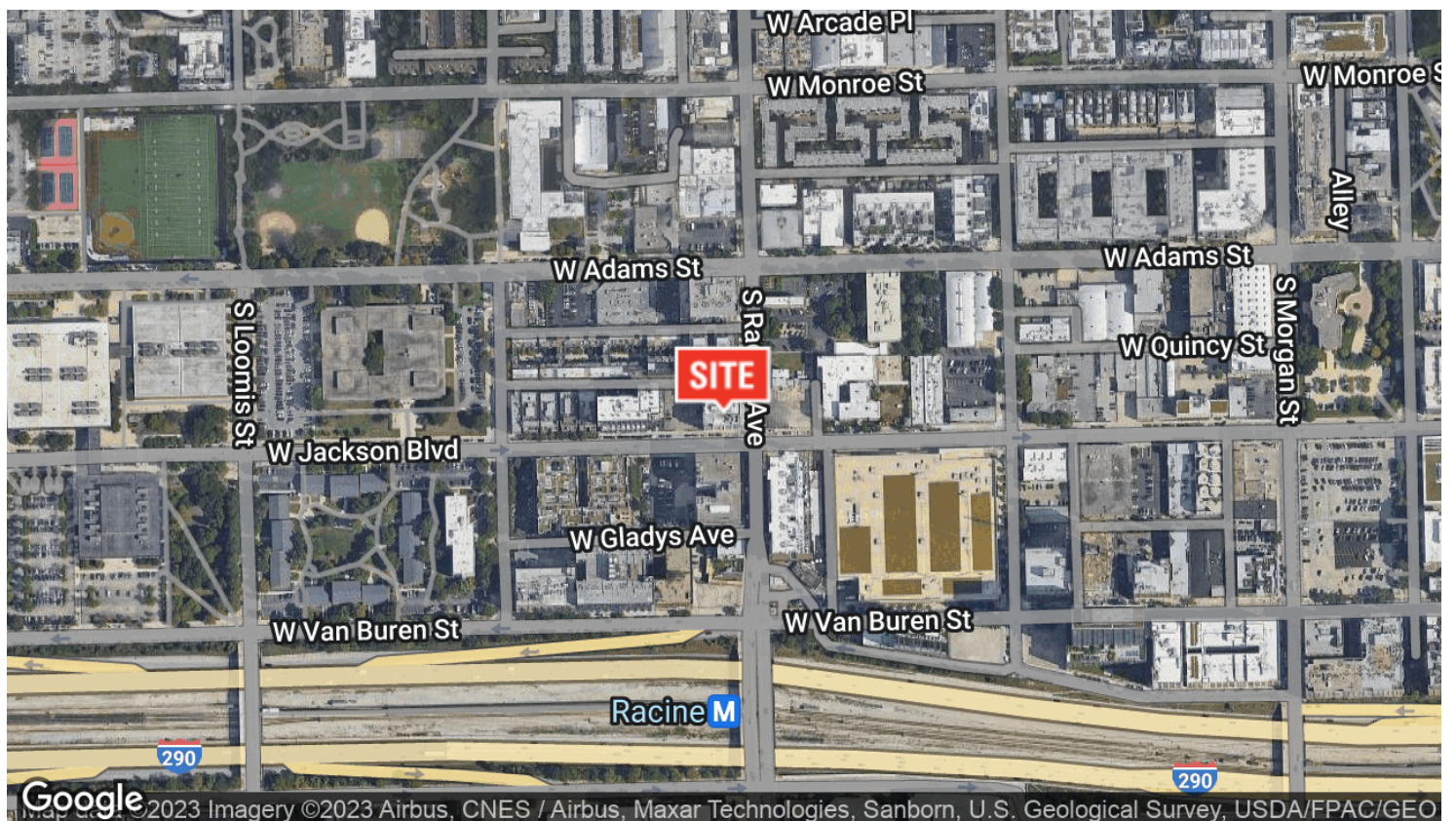
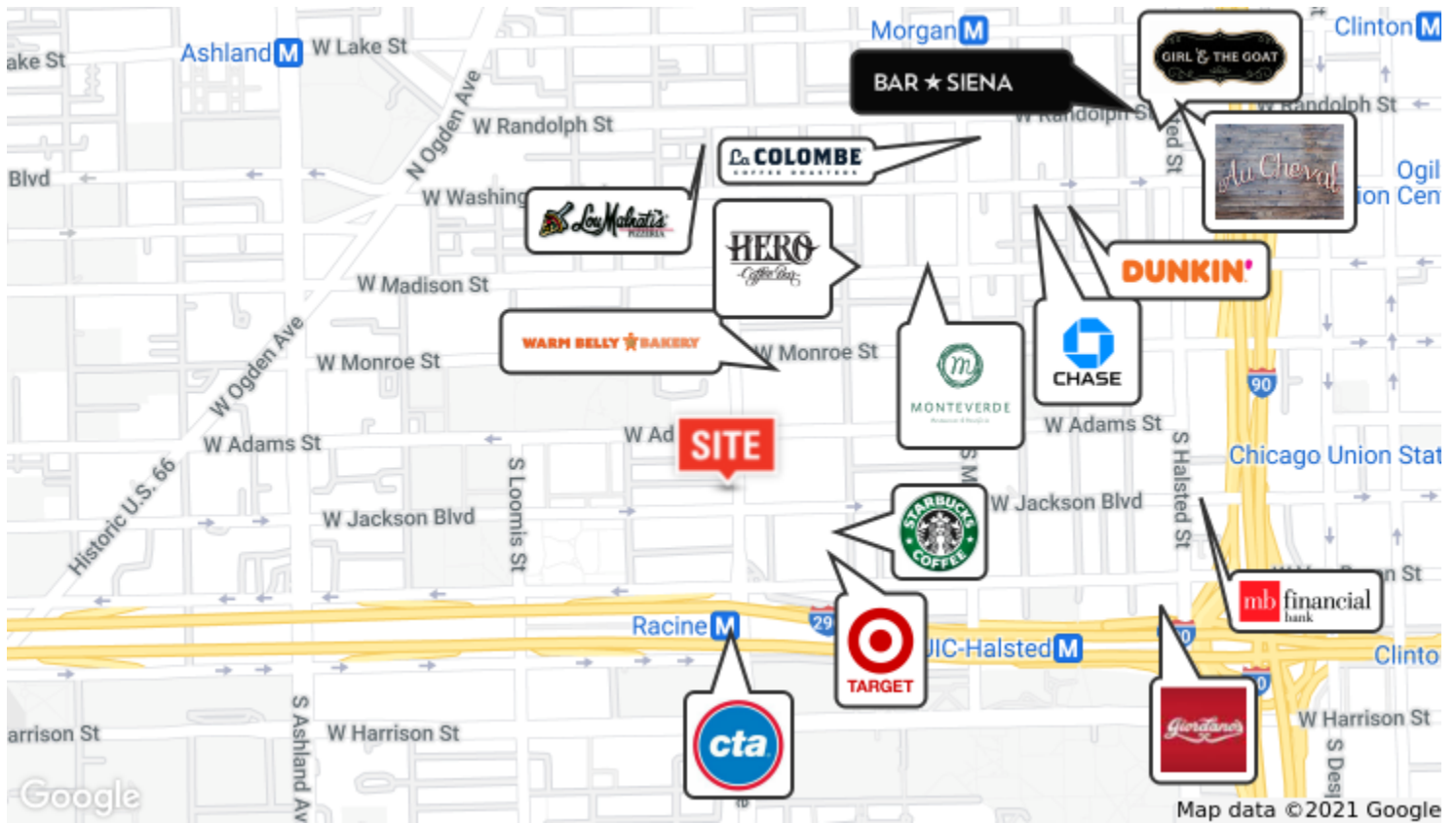


236 S. RACINE AVE.
1ST. FLOOR PLAN

AERIAL & STREET DETAIL

228 S Racine Ave, Chicago, IL 60607

Negotiable



DEMOGRAPHICS MAP

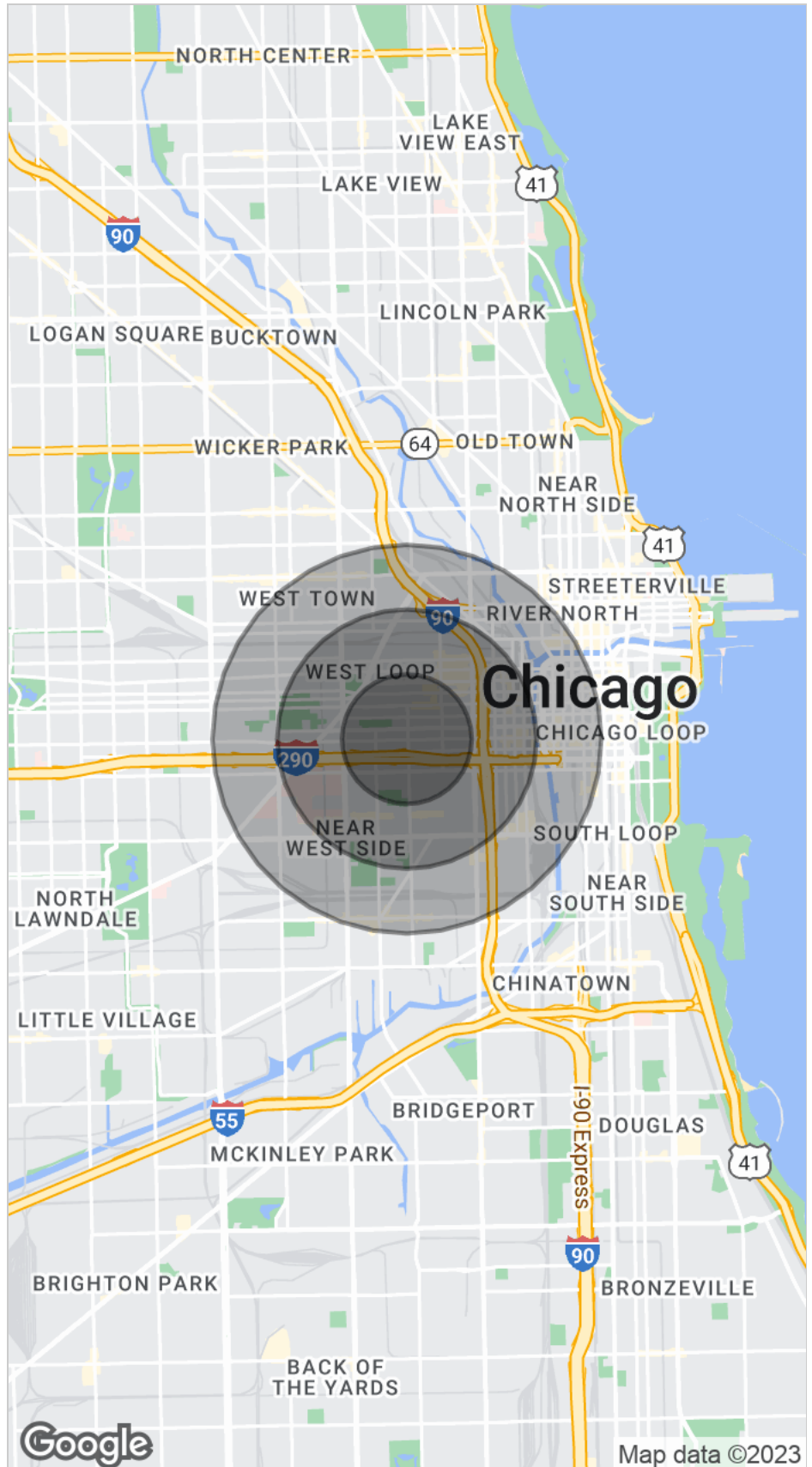
228 S Racine Ave, Chicago, IL 60607

Negotiable

2010 STATISTICS

POPULATION
(total)0.5 MILES
10,3491 MILE
34,9471.5 MILES
73,060HOUSEHOLDS
(total)0.5 MILES
5,3201 MILE
17,8521.5 MILES
36,253AVG. INCOME
(per household)0.5 MILES
\$109,5231 MILE
\$96,8721.5 MILES
\$91,388

MEDIAN AGE

0.5 MILES
31.91 MILE
31.81.5 MILES
31.9

DEMOGRAPHICS REPORT

228 S Racine Ave, Chicago, IL 60607

Negotiable

AGE

0.5 MILES

1 MILE

1.5 MILES

MEDIAN AGE

31.5

31.4

31.6

(male)

MEDIAN AGE

32.6

32.5

32.6

(female)

HOUSEHOLDS

0.5 MILES

1 MILE

1.5 MILES

PERSONS PER HH

1.9

2.0

2.0

AVG. HOUSE VALUE

\$560,944

\$494,613

\$447,951