

OFFICE BUILDING FOR SALE

FORMER THRASH LAW OFFICE

129 N STATE ST JACKSON, MS 39201



JEFF SPEED, CCIM
601.624.8380
jeff@speedcres.com

SPEED COMMERCIAL REAL ESTATE

601.987.0202 | 805 South Wheatley | Ridgeland, MS 39157 | speedcres.com

This information has been obtained from sources believed reliable, but has not been verified for accuracy or completeness. You should conduct a careful, independent investigation of the property and verify all information. Any reliance on this information is solely at your own risk. All of other marks displayed on this document are the property of their respective

FORMER THRASH LAW OFFICE

OFFICE BUILDING FOR SALE



LOCATION DESCRIPTION

Speed Commercial Real Estate is proud to offer the Former Thrash Law Office for SALE. The two buildings encompass approximately 14,856 SF with 13 parking spaces. The property is zoned C-4 and lies within the Central Business District. The property located at the corner of Amite Street and N. State Street.

Property is 2 buildings -125 & 129 North State Street
125 N.State- 5872 sqft Heated and Cooled- 1074 sqft of storage.
129 N. State- 6050 sqft Heated and Cooled- 1860 sqft of storage.
Total square footage of both buildings are 14,856.

OFFERING SUMMARY

Sale Price:	\$749,000
Lot Size:	0.24 Acres
Building Size:	14,856 SF

DEMOGRAPHICS	5 MILES	15 MILES	30 MILES
Total Households	45,357	161,722	209,333
Total Population	126,811	435,244	571,462
Average HH Income	\$46,123	\$63,711	\$63,959

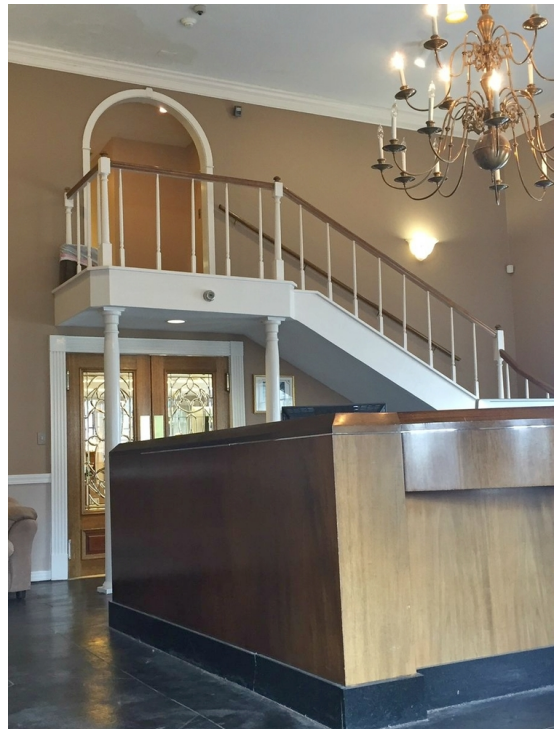
JEFF SPEED, CCIM

601.624.8380

jeff@speedcres.com

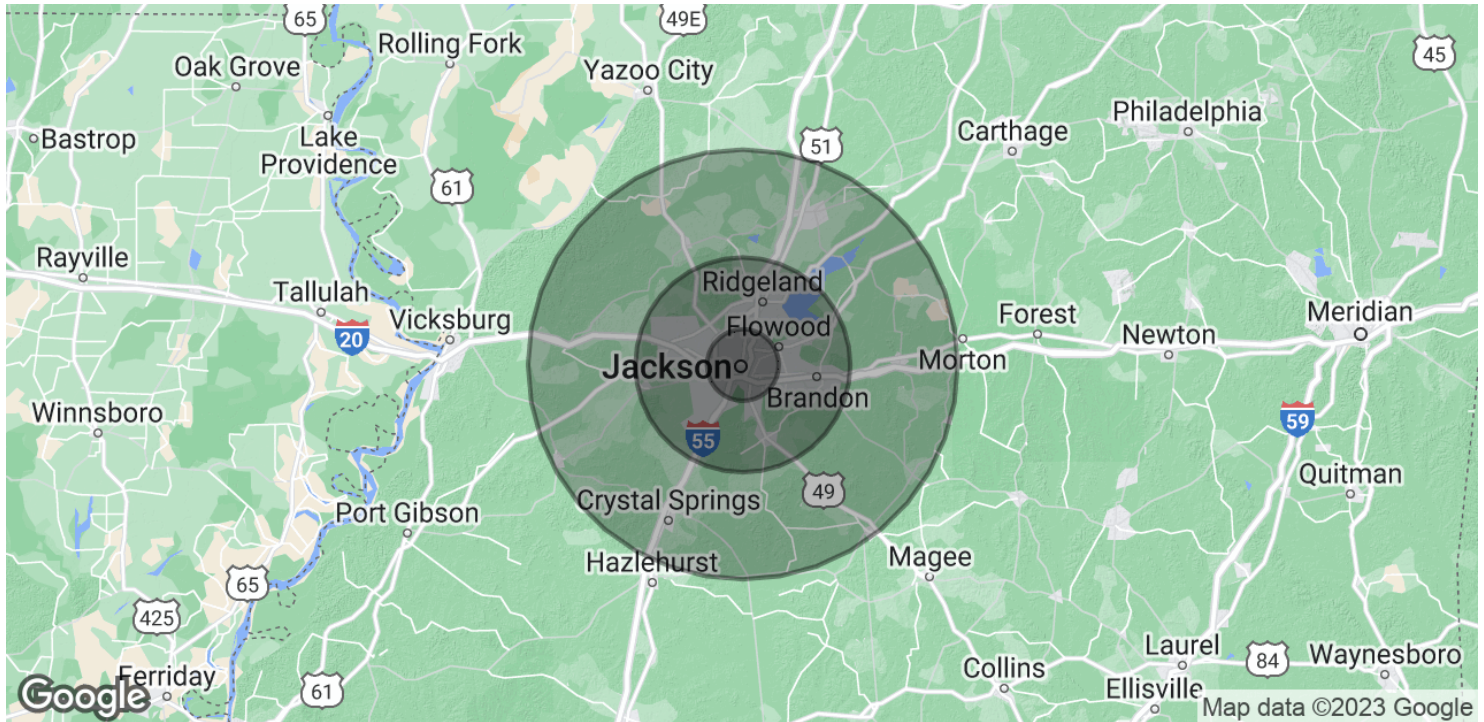
FORMER THRASH LAW OFFICE

OFFICE BUILDING FOR SALE



JEFF SPEED, CCIM
601.624.8380
jeff@speedcres.com

OFFICE BUILDING FOR SALE



POPULATION	5 MILES	15 MILES	30 MILES
Total Population	126,811	435,244	571,462
Average age	31.7	34.2	34.9
Average age (Male)	30.1	32.8	33.5
Average age (Female)	32.9	35.5	36.1
HOUSEHOLDS & INCOME	5 MILES	15 MILES	30 MILES
Total households	45,357	161,722	209,333
# of persons per HH	2.8	2.7	2.7
Average HH income	\$46,123	\$63,711	\$63,959
Average house value	\$152,921	\$169,240	\$162,301

* Demographic data derived from 2020 ACS - US Census

JEFF SPEED, CCIM

601.624.8380

jeff@speedcres.com

FORMER THRASH LAW OFFICE

OFFICE BUILDING FOR SALE



JEFF SPEED, CCIM

601.624.8380

jeff@speedcres.com



129 N STATE ST JACKSON, MS 39201

FORMER THRASH LAW OFFICE

OFFICE BUILDING FOR SALE



JEFF SPEED, CCIM

President | CCIM

601.624.8380

jeff@speedcres.com



MS #16810

JEFF SPEED, CCIM

601.624.8380

jeff@speedcres.com