

OFFICE FOR LEASE



4 Continental Dr, Exeter, NH 03833



OFFERING SUMMARY

| | |
|-------------------------|------------|
| NUMBER OF UNITS: | 1 |
| AVAILABLE SF: | |
| LEASE RATE: | Negotiable |
| LOT SIZE: | 1.45 Acres |
| BUILDING SIZE: | 10,000 |
| RENOVATED: | 2019 |
| ZONING: | C-3 |

PROPERTY OVERVIEW

This first floor space has radiant heat in the floor, plenty of parking, and an open layout that can be designed for any business needs. The space can be divided up to sub spaces under 1000 sq ft or be used by a single tenant. Space is currently unfinished, but LL may be completing some build out for any potential tenants.

PROPERTY HIGHLIGHTS

KELLER WILLIAMS COASTAL REALTY
603.610.8500
750 Lafayette Rd.,
Suite 201 - Coastal Land & Commercial Group
Portsmouth, NH 03801

VIKTORIA ALKOVA
Commercial Real Estate Agent, MiCP
O: 603.610.8500
C: 646.577.1194
viktorija@kwclcg.com
NH #074657

ETHAN ASH
Commercial & Investment Specialist, MiCP
O: +16036108500 X1430
C: 603.707.2319
ethan.ash@kw.com
NH #071469

DAVE GARVEY
Managing Director
O: 603.610.8523
C: 603.491.2854
davegarvey@kwcommercial.com
NH #004637

Each Office Independently Owned and Operated [kwclcg.com/](https://www.kwclcg.com/)

We obtained the information above from sources we believe to be reliable. However, we have not verified its accuracy and make no guarantee, warranty or representation about it. It is submitted subject to the possibility of errors, omissions, change of price, rental or other conditions, prior sale, lease or financing, or withdrawal without notice. We include projections, opinions, assumptions or estimates for example only, and they may not represent current or future performance of the property. You and your tax and legal advisors should conduct your own investigation of the property and transaction.

OFFICE FOR LEASE



4 Continental Dr, Exeter, NH 03833



Second floor - not for lease;



Sample office space finishes - built to suit.



Sample kitchen& bathroom finishes - built to suit.



Sample office space finishes - built to suit.

KELLER WILLIAMS COASTAL REALTY
603.610.8500
750 Lafayette Rd.,
Suite 201 - Coastal Land & Commercial Group
Portsmouth, NH 03801

VIKTORIA ALKOVA
Commercial Real Estate Agent, MiCP
O: 603.610.8500
C: 646.577.1194
viktor@kwclcg.com
NH #074657

ETHAN ASH
Commercial & Investment Specialist, MiCP
O: +16036108500 X1430
C: 603.707.2319
ethan.ash@kw.com
NH #071469

DAVE GARVEY
Managing Director
O: 603.610.8523
C: 603.491.2854
davegarvey@kwcommercial.com
NH #004637

Each Office Independently Owned and Operated kwclcg.com/

We obtained the information above from sources we believe to be reliable. However, we have not verified its accuracy and make no guarantee, warranty or representation about it. It is submitted subject to the possibility of errors, omissions, change of price, rental or other conditions, prior sale, lease or financing, or withdrawal without notice. We include projections, opinions, assumptions or estimates for example only, and they may not represent current or future performance of the property. You and your tax and legal advisors should conduct your own investigation of the property and transaction.

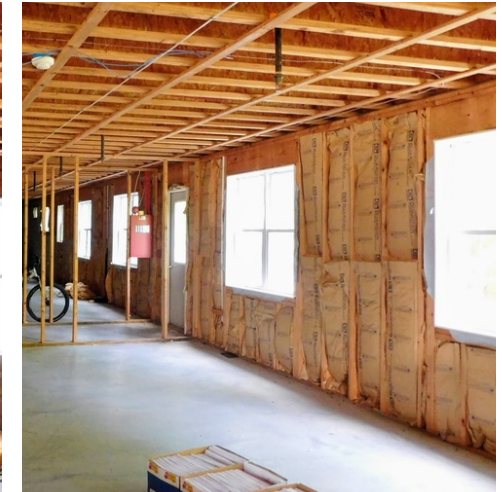
OFFICE FOR LEASE



4 Continental Dr, Exeter, NH 03833



Grade level floor - ADA accessible



KELLER WILLIAMS COASTAL REALTY
603.610.8500
750 Lafayette Rd.,
Suite 201 - Coastal Land & Commercial Group
Portsmouth, NH 03801

VIKTORIA ALKOVA
Commercial Real Estate Agent, MiCP
O: 603.610.8500
C: 646.577.1194
viktoriam@kwclcg.com
NH #074657

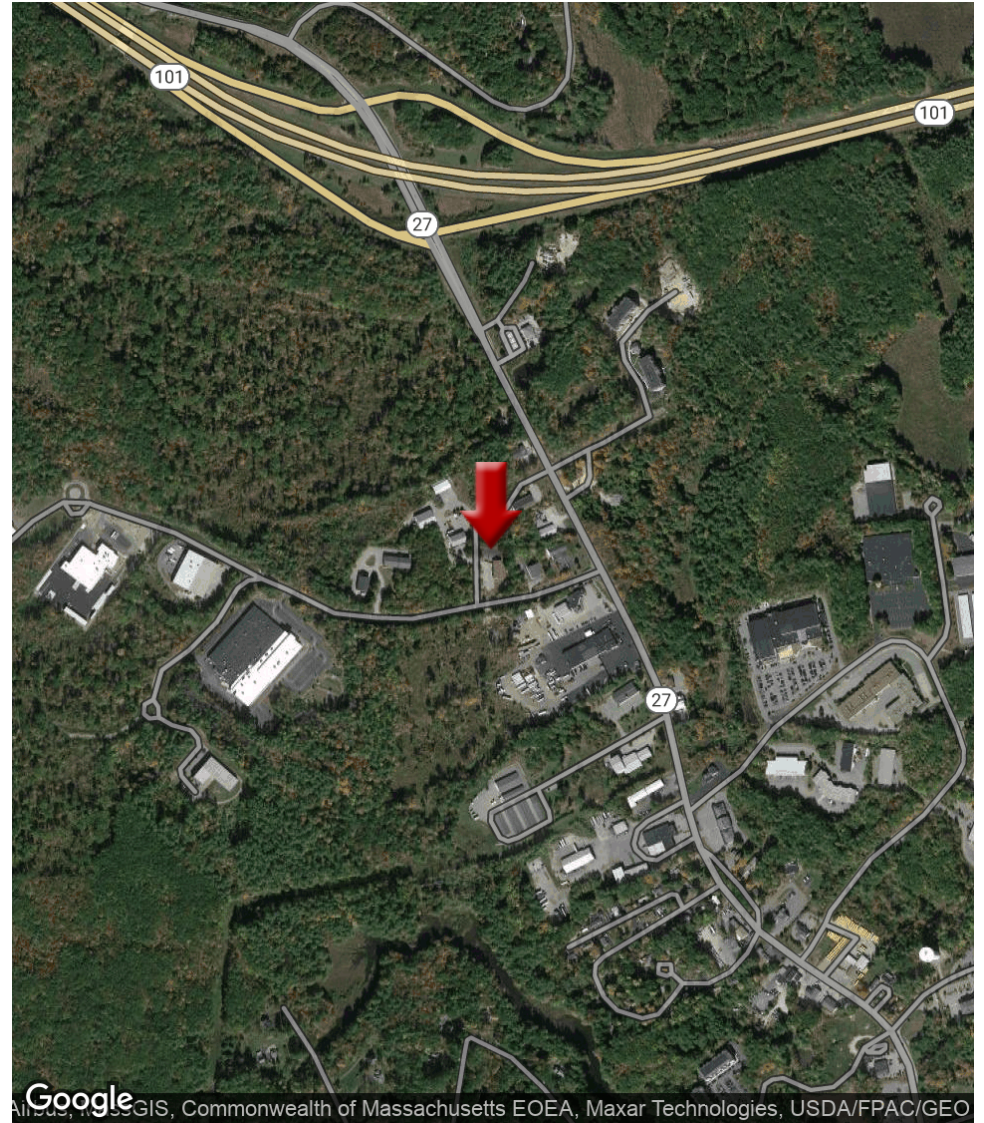
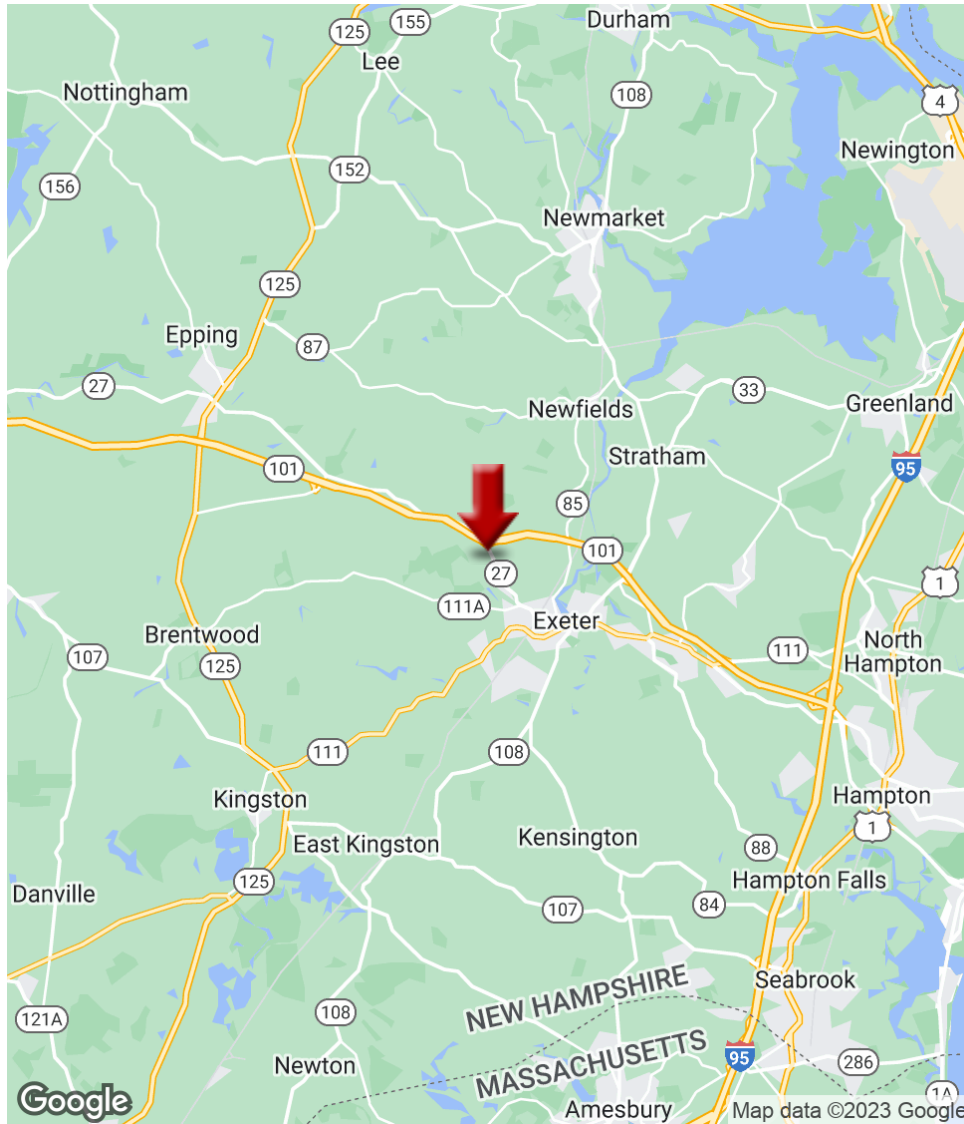
ETHAN ASH
Commercial & Investment Specialist, MiCP
O: +16036108500 X1430
C: 603.707.2319
ethan.ash@kw.com
NH #071469

DAVE GARVEY
Managing Director
O: 603.610.8523
C: 603.491.2854
davegarvey@kwcommercial.com
NH #004637

Each Office Independently Owned and Operated kwclcg.com/

We obtained the information above from sources we believe to be reliable. However, we have not verified its accuracy and make no guarantee, warranty or representation about it. It is submitted subject to the possibility of errors, omissions, change of price, rental or other conditions, prior sale, lease or financing, or withdrawal without notice. We include projections, opinions, assumptions or estimates for example only, and they may not represent current or future performance of the property. You and your tax and legal advisors should conduct your own investigation of the property and transaction.

4 Continental Dr, Exeter, NH 03833



KELLER WILLIAMS COASTAL REALTY
603.610.8500
750 Lafayette Rd.,
Suite 201 - Coastal Land & Commercial Group
Portsmouth, NH 03801

VIKTORIA ALKOVA
Commercial Real Estate Agent, MiCP
O: 603.610.8500
C: 646.577.1194
viktor@kwclcg.com
NH #074657

ETHAN ASH
Commercial & Investment Specialist, MiCP
O: +16036108500 X1430
C: 603.707.2319
ethan.ash@kw.com
NH #071469

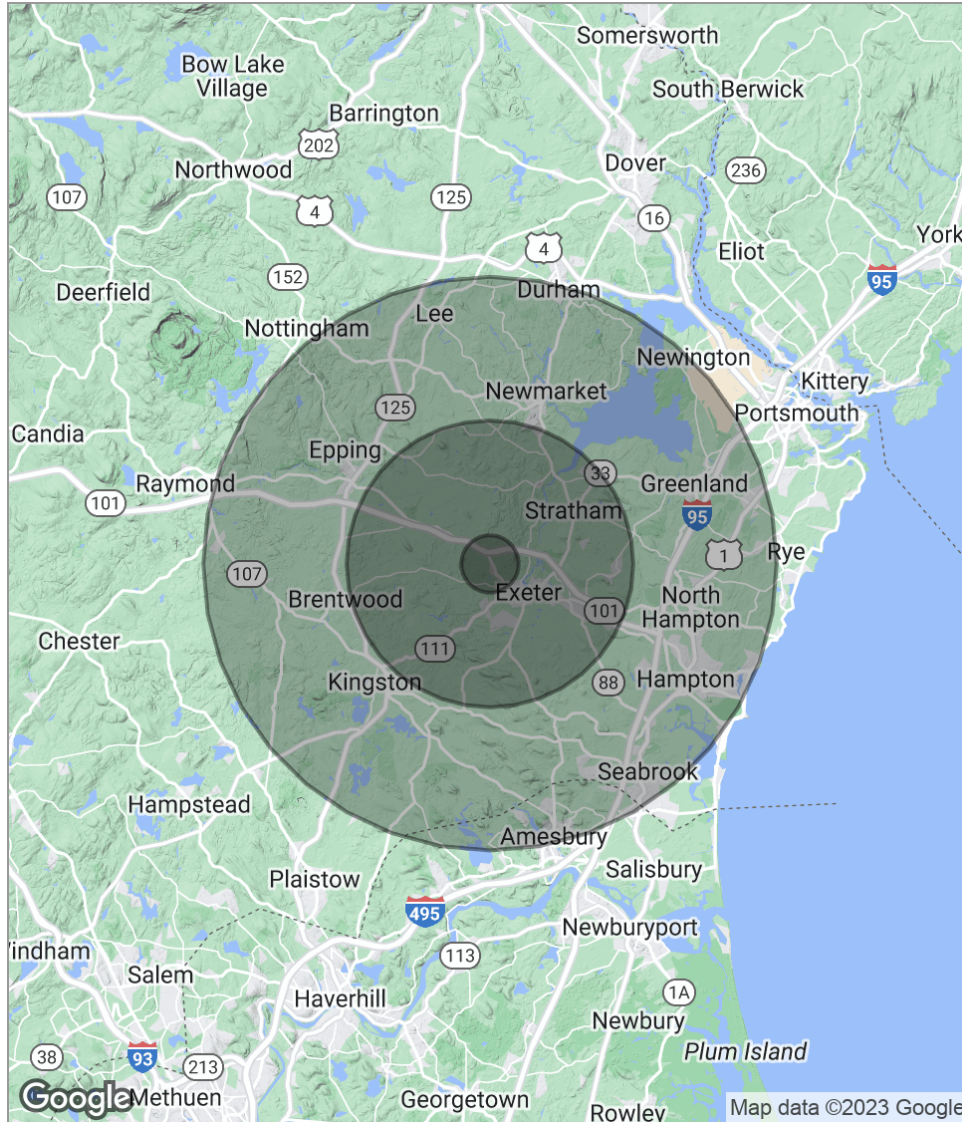
DAVE GARVEY
Managing Director
O: 603.610.8523
C: 603.491.2854
davegarvey@kwcommercial.com
NH #004637

Each Office Independently Owned and Operated kwclcg.com/

We obtained the information above from sources we believe to be reliable. However, we have not verified its accuracy and make no guarantee, warranty or representation about it. It is submitted subject to the possibility of errors, omissions, change of price, rental or other conditions, prior sale, lease or financing, or withdrawal without notice. We include projections, opinions, assumptions or estimates for example only, and they may not represent current or future performance of the property. You and your tax and legal advisors should conduct your own investigation of the property and transaction.

OFFICE FOR LEASE

4 Continental Dr, Exeter, NH 03833



| POPULATION | 1 MILE | 5 MILES | 10 MILES |
|---------------------|----------|-----------|-----------|
| Total Population | 1,449 | 35,145 | 121,289 |
| Median Age | 45.8 | 43.4 | 40.9 |
| Median Age (Male) | 42.9 | 42.0 | 39.8 |
| Median Age (Female) | 47.8 | 44.5 | 41.7 |
| HOUSEHOLDS & INCOME | 1 MILE | 5 MILES | 10 MILES |
| Total Households | 616 | 14,152 | 46,822 |
| # Of Persons Per HH | 2.4 | 2.5 | 2.6 |
| Average HH Income | \$94,769 | \$92,166 | \$92,447 |
| Average House Value | | \$371,077 | \$370,975 |

* Demographic data derived from 2020 ACS - US Census

KELLER WILLIAMS COASTAL REALTY
603.610.8500
750 Lafayette Rd.,
Suite 201 - Coastal Land & Commercial Group
Portsmouth, NH 03801

VIKTORIA ALKOVA
Commercial Real Estate Agent, MiCP
O: 603.610.8500
C: 646.577.1194
viktorial@kwclcg.com
NH #074657

ETHAN ASH
Commercial & Investment Specialist, MiCP
O: +16036108500 X1430
C: 603.707.2319
ethan.ash@kw.com
NH #071469

DAVE GARVEY
Managing Director
O: 603.610.8523
C: 603.491.2854
davegarvey@kwcommercial.com
NH #004637

Each Office Independently Owned and Operated kwclcg.com/

We obtained the information above from sources we believe to be reliable. However, we have not verified its accuracy and make no guarantee, warranty or representation about it. It is submitted subject to the possibility of errors, omissions, change of price, rental or other conditions, prior sale, lease or financing, or withdrawal without notice. We include projections, opinions, assumptions or estimates for example only, and they may not represent current or future performance of the property. You and your tax and legal advisors should conduct your own investigation of the property and transaction.