

WATERFRONT BUILDING

200 First Avenue, Pittsburgh, PA 15222

EXECUTIVE SUMMARY



OFFERING SUMMARY

Available SF: 2,078 & 3,165 SF

Lease Rate: Negotiable

Lot Size: 0.39 Acres

Building Size: 53,250 SF

Zoning: Golden Triangle District
C

Market: Pittsburgh

PROPERTY OVERVIEW

Four story Historic Landmark Building in Firstside District with unique architectural character

LOCATION OVERVIEW

Location offers numerous parking options and public transportation within blocks along with local amenities nearby such as restaurant and shops in Market Square and Station Square. Offers easy access to I-376 and I-279.

PROPERTY HIGHLIGHTS

- Light-filled atrium spanning each floor
- Recently remodeled lobby area
- Numerous parking options within blocks
- 2,078 SF available on the 1st floor
- 3,165 SF available on the 4th floor with private balcony and exposed wood and brick finishes

All information is from sources deemed reliable and is submitted subject to errors, omissions, change of price rental or other conditions, prior sale, lease or financing or withdrawal without notice.



Richard Beynon

412.261.3640

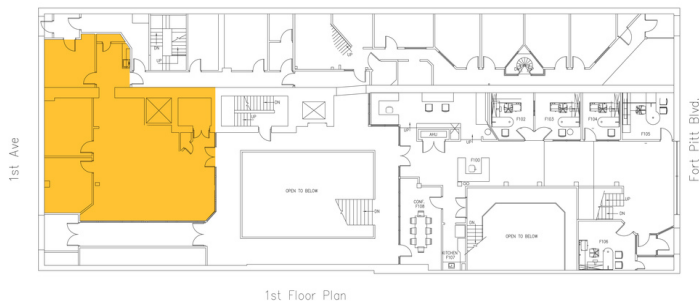
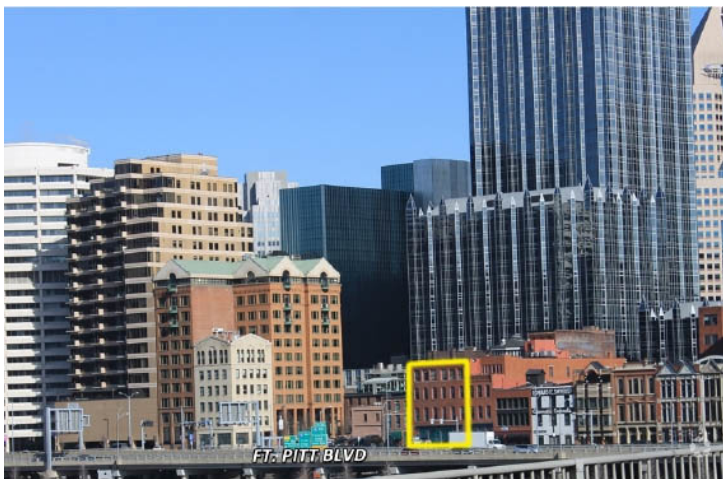
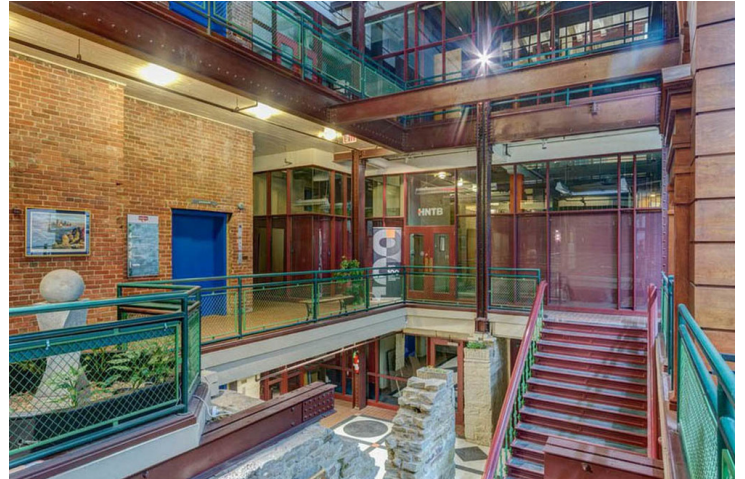
rbeynon@beynonandco.com

OFFICE BUILDING FOR LEASE

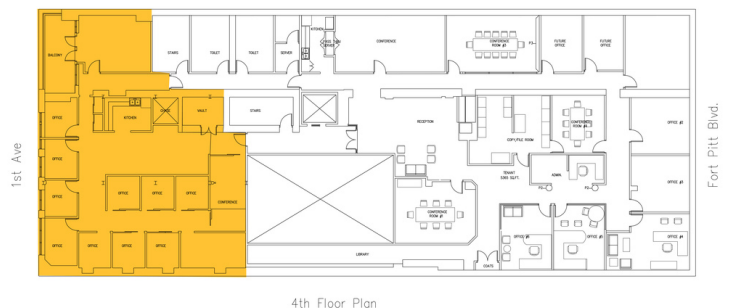
WATERFRONT BUILDING

200 First Avenue, Pittsburgh, PA 15222

ADDITIONAL PHOTOS



1st Floor Plan



4th Floor Plan

COMMERCIAL
BEYNON & CO.
REAL ESTATE

Richard Beynon
412.261.3640
rbeynon@beynonandco.com