

# 0 FM 484

## 0 FM 484, SATTLER, TX 78133

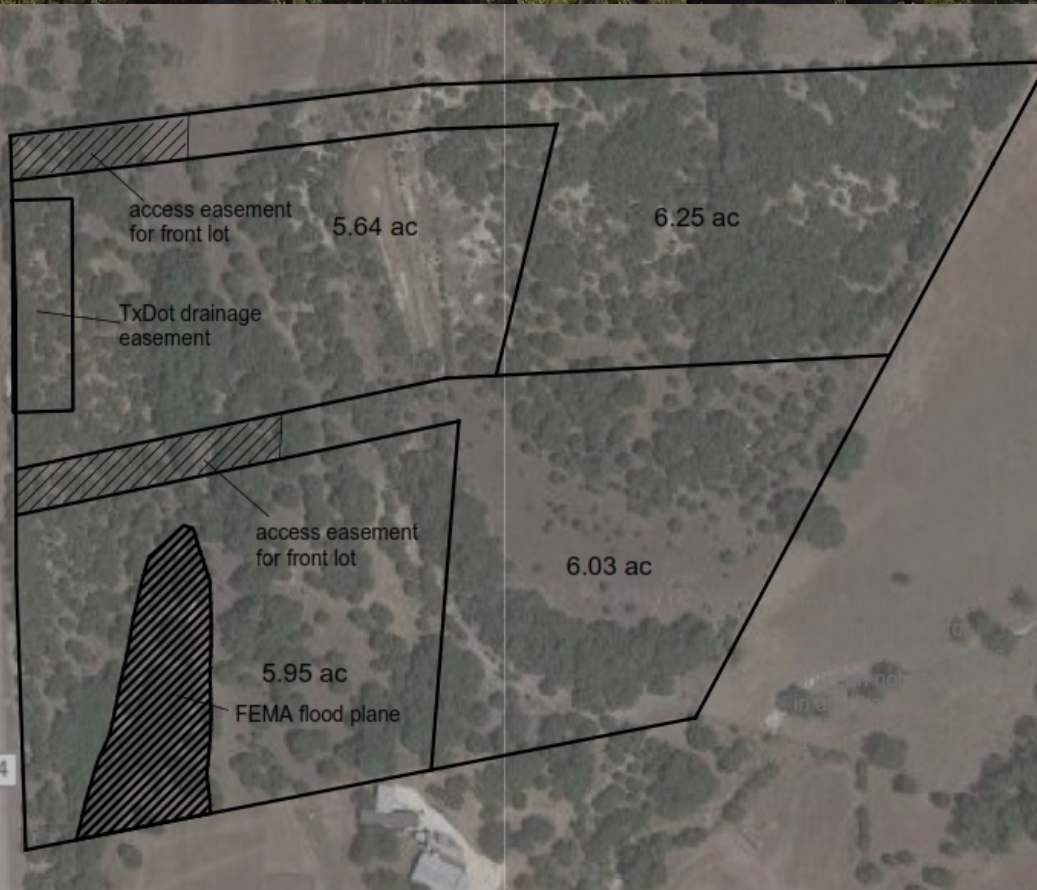
# FOR SALE

\$525,000  
Land



#### PROPERTY FEATURES:

- 23+ ACRES
- OUTSIDE OF CITY LIMITS
- CLOSE TO UTILITIES
- MOSTLY LEVEL TOPOGRAPHY
- PARTIALLY CLEARED
- COULD BE USED FOR  
RESIDENTIAL DEVELOPMENT  
> SEE SUBDIVISION PLAN - 4 LOTS



0 FM 484

0 FM 484, SATTLER, TX 78133

FOR SALE

Land



[www.SperryCGA.com](http://www.SperryCGA.com)

**Mark Haynie**

**BROKER**

830.481.9533

[mark.haynie@sperrycga.com](mailto:mark.haynie@sperrycga.com)

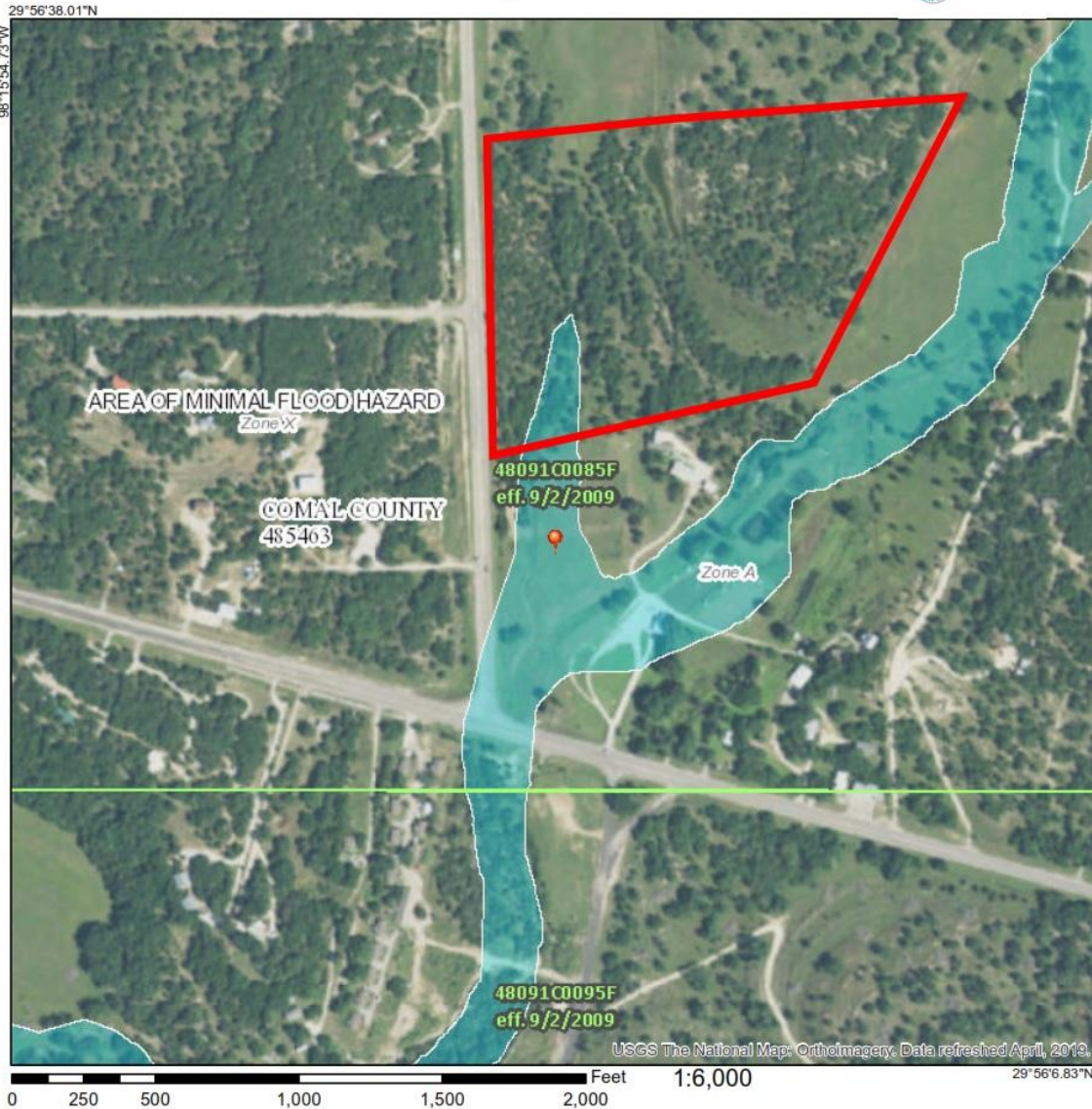
TX #644160

Each office independently owned and operated.

We obtained the information above from sources we believe to be reliable. However, we have not verified its accuracy and make no guarantee, warranty or representation about it. It is submitted subject to the possibility of errors, omissions, change of price, rental or other conditions, prior sale, lease or financing, or withdrawal without notice. We include projections, opinions, assumptions or estimates for example only, and they may not represent current or future performance of the property. You and your tax and legal advisors should conduct your own investigation of the property and transaction.

# Fema Flood Map

## National Flood Hazard Layer FIRMette



### Legend

SEE FIS REPORT FOR DETAILED LEGEND AND INDEX MAP FOR FIRM PANEL LAYOUT

SPECIAL FLOOD HAZARD AREAS	Without Base Flood Elevation (BFE) Zone A, V, A99
	With BFE or Depth Zone AE, AO, AH, VE, AR
	Regulatory Floodway
OTHER AREAS OF FLOOD HAZARD	0.2% Annual Chance Flood Hazard, Areas of 1% annual chance flood with average depth less than one foot or with drainage areas of less than one square mile Zone X
	Future Conditions 1% Annual Chance Flood Hazard Zone X
	Area with Reduced Flood Risk due to Levee. See Notes. Zone X
	Area with Flood Risk due to Levee Zone D
OTHER AREAS	NO SCREEN Area of Minimal Flood Hazard Zone X
	Effective LOMRs
GENERAL STRUCTURES	Area of Undetermined Flood Hazard Zone D
	Channel, Culvert, or Storm Sewer Levee, Dike, or Floodwall
OTHER FEATURES	20.2 17.5 Cross Sections with 1% Annual Chance Water Surface Elevation
	Coastal Transect
	Base Flood Elevation Line (BFE)
	Limit of Study
	Jurisdiction Boundary
	Coastal Transect Baseline
MAP PANELS	Profile Baseline
	Hydrographic Feature
MAP PANELS	Digital Data Available
	No Digital Data Available
	Unmapped



The pin displayed on the map is an approximate point selected by the user and does not represent an authoritative property location.

This map complies with FEMA's standards for the use of digital flood maps if it is not void as described below. The basemap shown complies with FEMA's basemap accuracy standards.

The flood hazard information is derived directly from the authoritative NFHL web services provided by FEMA. This map was exported on 8/5/2019 at 10:32:30 AM and does not reflect changes or amendments subsequent to this date and time. The NFHL and effective information may change or become superseded by new data over time.

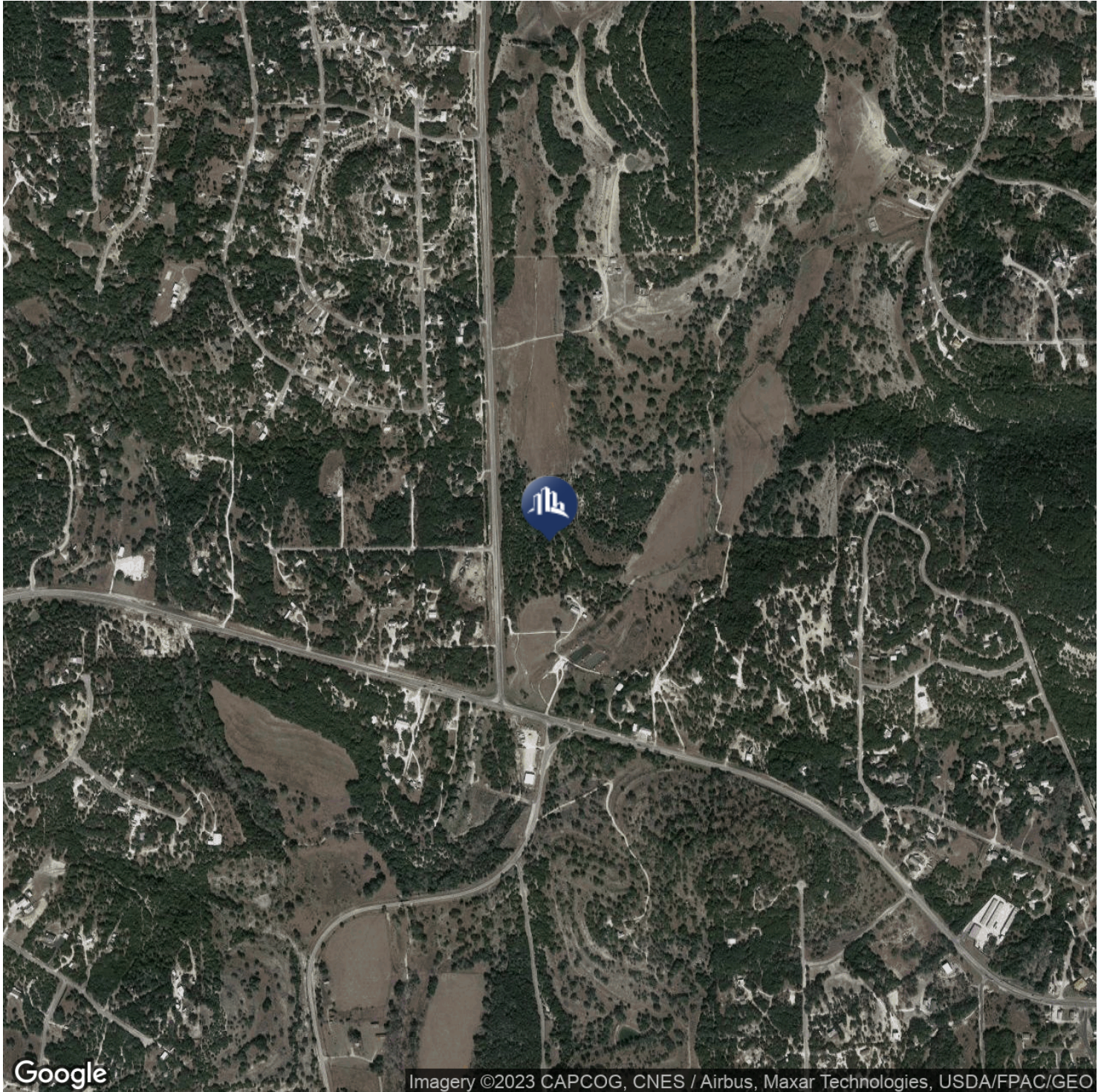
This map image is void if the one or more of the following map elements do not appear: basemap imagery, flood zone labels, legend, scale bar, map creation date, community identifiers, FIRM panel number, and FIRM effective date. Map images for unmapped and unmodernized areas cannot be used for regulatory purposes.

0 FM 484

0 FM 484, SATTLER, TX 78133

FOR SALE

Land



Imagery ©2023 CAPCOG, CNES / Airbus, Maxar Technologies, USDA/FPAC/GEO



**Mark Haynie**

**BROKER**

830.481.9533

[mark.haynie@sperrycga.com](mailto:mark.haynie@sperrycga.com)

TX #644160

Each office independently owned and operated.

We obtained the information above from sources we believe to be reliable. However, we have not verified its accuracy and make no guarantee, warranty or representation about it. It is submitted subject to the possibility of errors, omissions, change of price, rental or other conditions, prior sale, lease or financing, or withdrawal without notice. We include projections, opinions, assumptions or estimates for example only, and they may not represent current or future performance of the property. You and your tax and legal advisors should conduct your own investigation of the property and transaction.

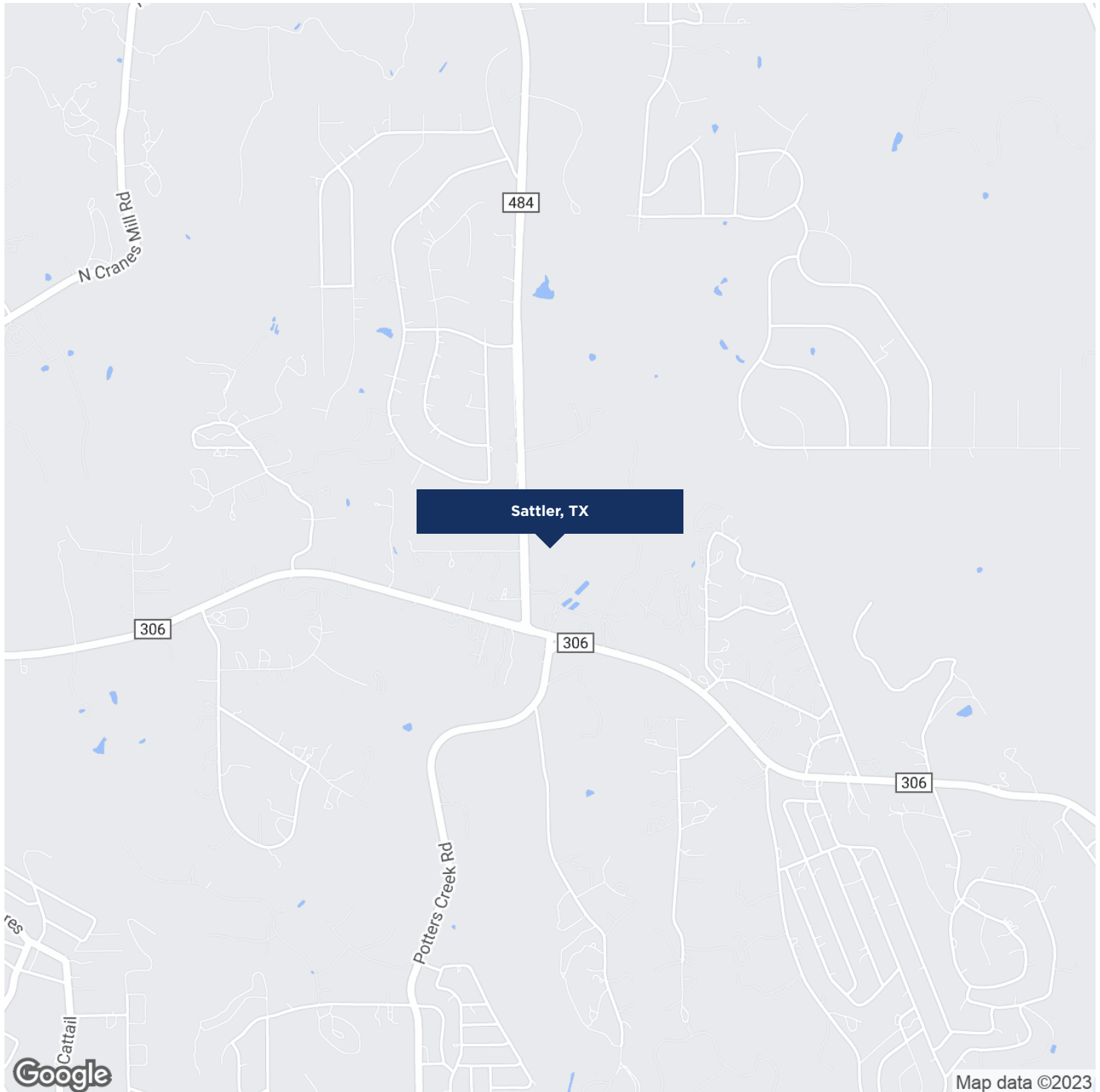
[www.SperryCGA.com](http://www.SperryCGA.com)

# 0 FM 484

0 FM 484, SATTTLER, TX 78133

## FOR SALE

Land



[www.SperryCGA.com](http://www.SperryCGA.com)

**Mark Haynie**

**BROKER**

830.481.9533

[mark.haynie@sperrycga.com](mailto:mark.haynie@sperrycga.com)

TX #644160

Each office independently owned and operated.

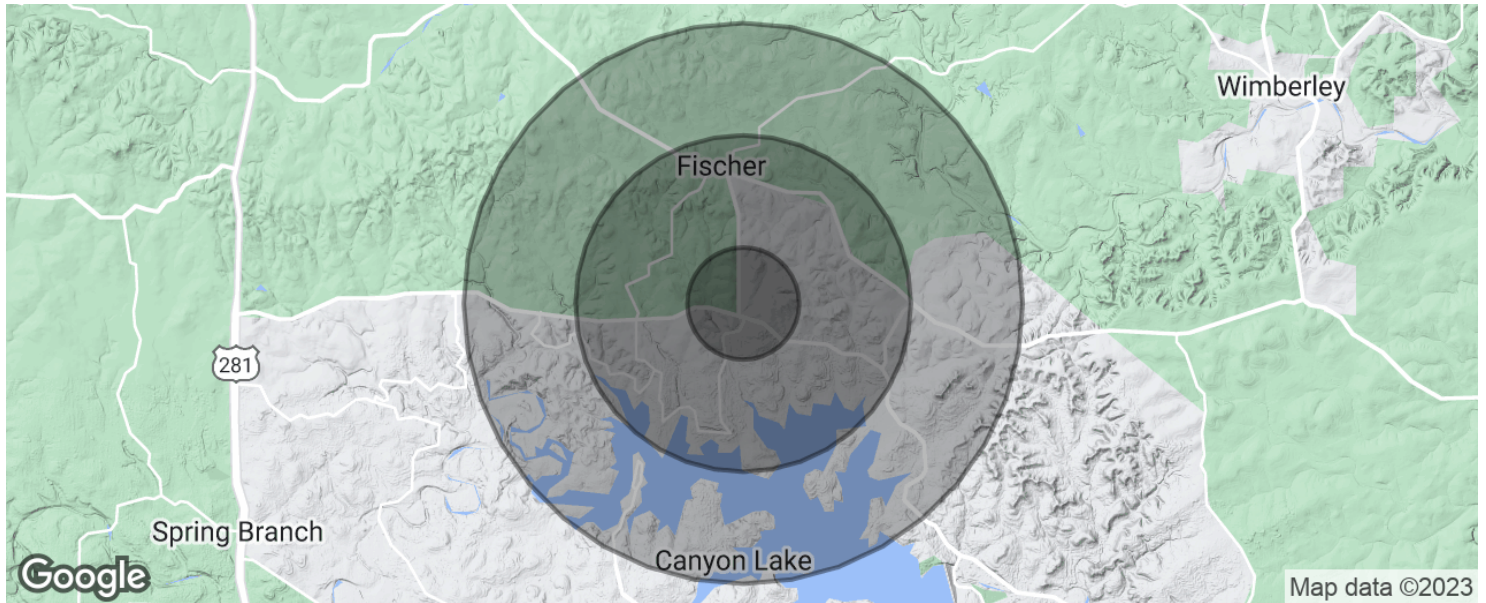
We obtained the information above from sources we believe to be reliable. However, we have not verified its accuracy and make no guarantee, warranty or representation about it. It is submitted subject to the possibility of errors, omissions, change of price, rental or other conditions, prior sale, lease or financing, or withdrawal without notice. We include projections, opinions, assumptions or estimates for example only, and they may not represent current or future performance of the property. You and your tax and legal advisors should conduct your own investigation of the property and transaction.

# 0 FM 484

## 0 FM 484, SATTLER, TX 78133

# FOR SALE

## Land



POPULATION	1 MILE	3 MILES	5 MILES
Total population	249	2,327	8,270
Median age	43.1	44.1	47.6
Median age (Male)	41.3	42.7	47.3
Median age (Female)	45.0	45.6	47.7
HOUSEHOLDS & INCOME	1 MILE	3 MILES	5 MILES
Total households	94	894	3,409
# of persons per HH	2.6	2.6	2.4
Average HH income	\$72,606	\$71,796	\$72,189
Average house value	\$195,834	\$194,349	\$200,207

\* Demographic data derived from 2020 ACS - US Census