



FORMER DESIGN STUDIO

OFFERING SUMMARY

Lease Rate:	Negotiable
Available SF:	
Land Area:	15,000 SF
Date Available:	1/1/2020
Lease Type:	
NNN Charges:	\$4.56/YR

PROPERTY OVERVIEW

Fully upgraded Creative Office/Work Space located in the heart of the Pearl District. Across from REI and just two blocks from freeway access and Portland's Street Car, this property benefits from excellent access, exposure and off-street parking. Previously upgraded as a Center for collaboration it will allow its future occupant to scale open workspace, display or design. High ceilings, sealed concrete floors and in-place rigging system provide for state-of-the-art flexibility.

PROPERTY HIGHLIGHTS

- Upgraded windows, floors, lighting, restrooms and kitchenettes.
- Off-street Parking
- Custom lighting and rack/rigging
- Fully air-conditioned
- Two featured glass roll-up doors



Todd Collins
503.972.7283
todd@macadamforbes.com
Licensed in OR & WA

FOR LEASE

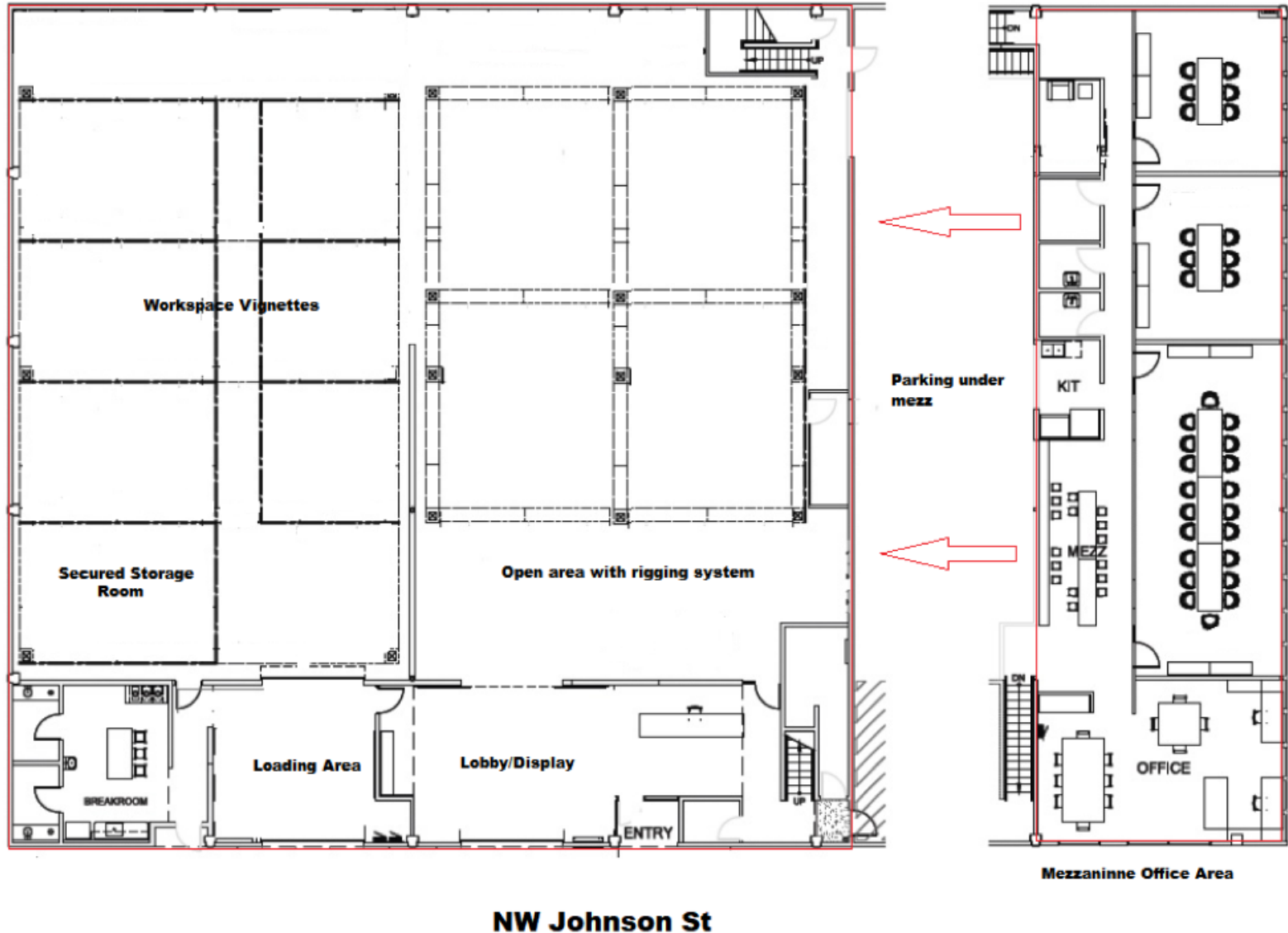
1432 NW Johnson St, Portland, OR 97209



Todd Collins
503.972.7283
todd@macadamforbes.com
Licensed in OR & WA

All of the information contained herein was obtained either from the owner or other parties we consider reliable. We have no reason to doubt its accuracy, however we do not guarantee it.

MACADAMFORBES.COM | 503.227.2500



Space Plan

1432 NW Johnson St, Portland, OR 97209



Map data ©2023 Google Imagery ©2023 , CNES / Airbus, Maxar Technologies, Metro, Portland Oregon, Public Laboratory, State of Oregon, U.S. Geological Survey, USDA/FPAC/GEO



Todd Collins
503.972.7283
todd@macadamforbes.com
Licensed in OR & WA

All of the information contained herein was obtained either from the owner or other parties we consider reliable. We have no reason to doubt its accuracy, however we do not guarantee it.

MACADAMFORBES.COM | 503.227.2500