

# Sherwood Industrial Park - Office / R&D Space For Lease

## For Lease

Holbrook, NY 11741



### OFFERING SUMMARY

Available SF:

Lease Rate:

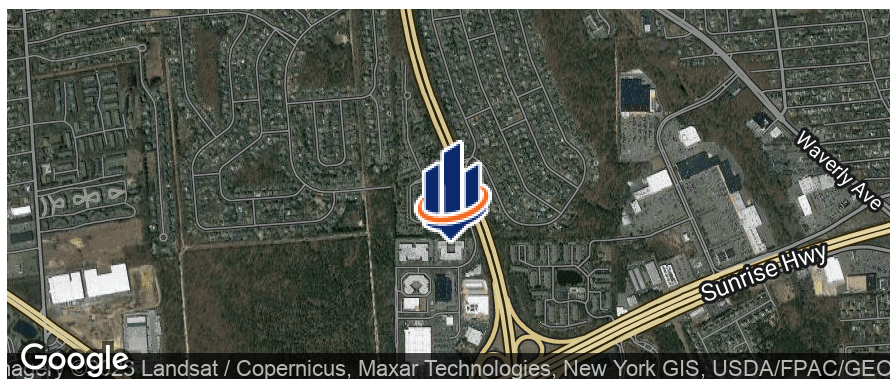
N/A

Layout:

The unit is comprised of 80% office and 20% warehouse. A drive in door provides access to the warehouse. The office space contains reception, executive offices with lots of natural light, bullpen, conference room, kitchen, and bathrooms.

### PROPERTY OVERVIEW

Campus Environment  
22' Clearance in Warehouse  
200 Amp Service, 3 Phase Electric [Minimum In All Units]  
Ample Parking  
Full Sprinklers  
12' x 14' Overhead Doors  
Direct Meter Electric & Gas  
Sewer



### Aric Schachner

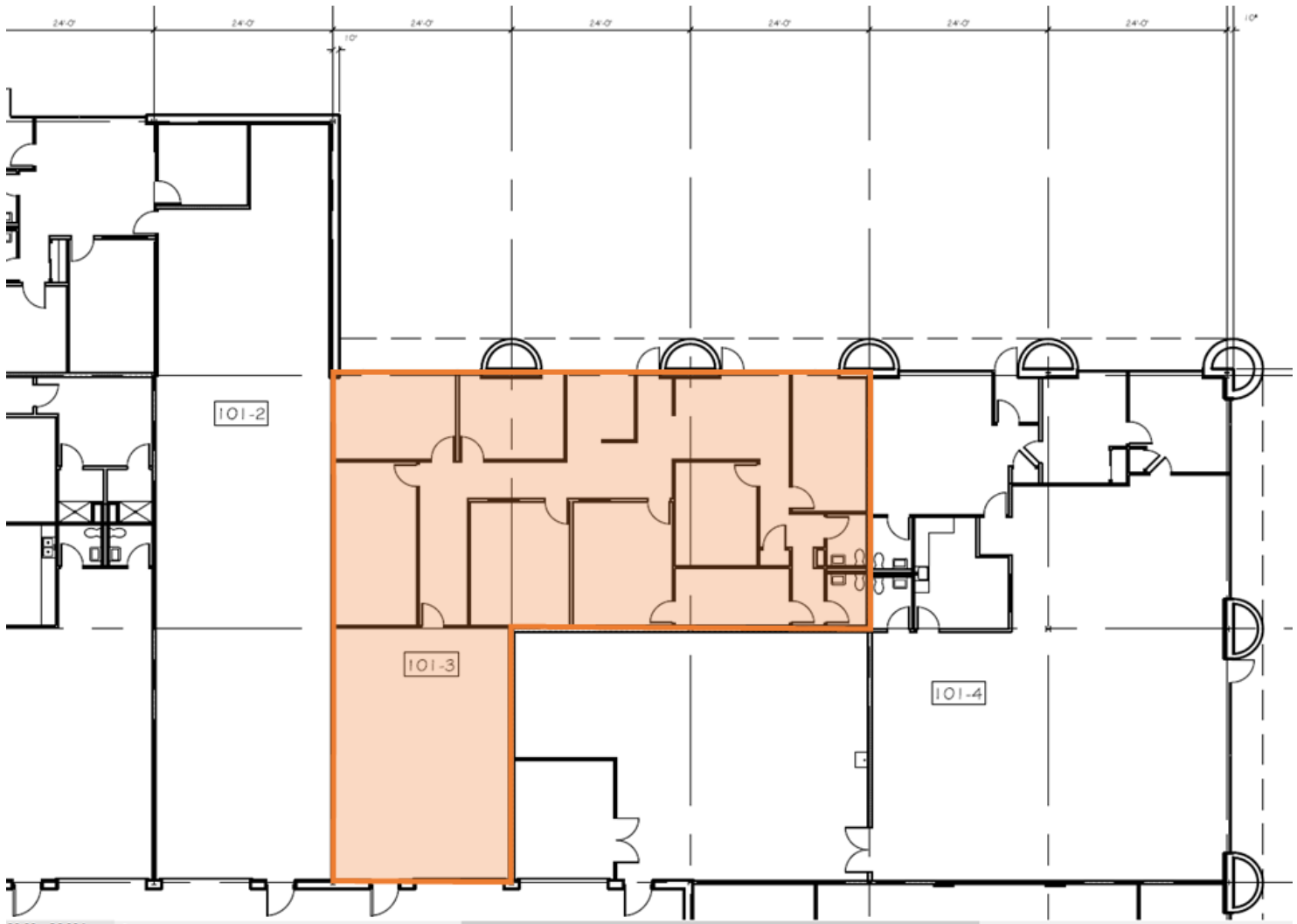
Managing Director, NYS Lic. Real Estate Associate Broker  
631.389.5500  
aric.schachner@svn.com



The information presented here is deemed to be accurate, but it has not been independently verified. We make no guarantee, warranty or representation. It is your responsibility to independently confirm accuracy and completeness. All SVN® offices are independently owned and operated.

# Sherwood Industrial Park - Office / R&D Space Available

101-3 Colin Drive – Floor Plan



## Aric Schachner

Managing Director, NYS Lic. Real Estate Associate Broker  
631.389.5500  
aric.schachner@svn.com



The information presented here is deemed to be accurate, but it has not been independently verified. We make no guarantee, warranty or representation. It is your responsibility to independently confirm accuracy and completeness. All SVN® offices are independently owned and operated.