

CIVIC PLAZA

1700 NW Civic Drive, Gresham, Oregon



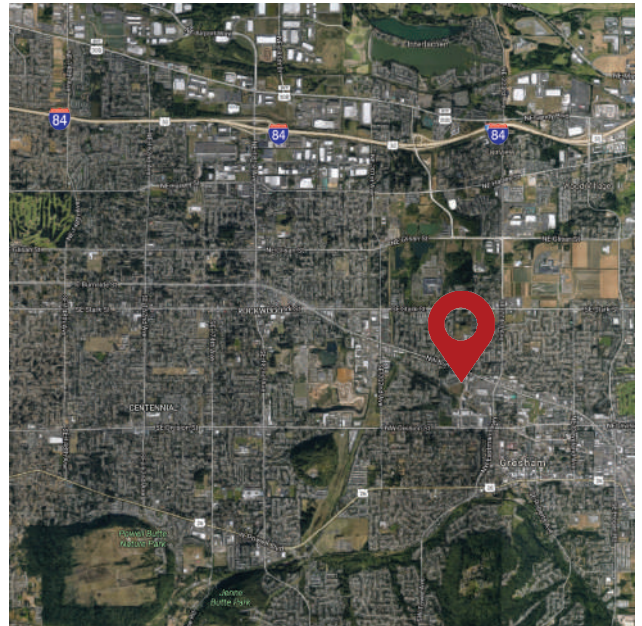
FOR LEASE

Civic Plaza is a 36,738 SF Class A office building on 1.52 acres in the Gresham Station Neighborhood. The building offers amazing views and is conveniently located at Division and Eastman Parkway with ample onsite parking and immediate access to MAX light rail.



AVAILABILITIES

- 2,725 RSF \$23.00/SF/Year - Full Service



Colin Russell
503.972.7295
colin@macadamforbes.com

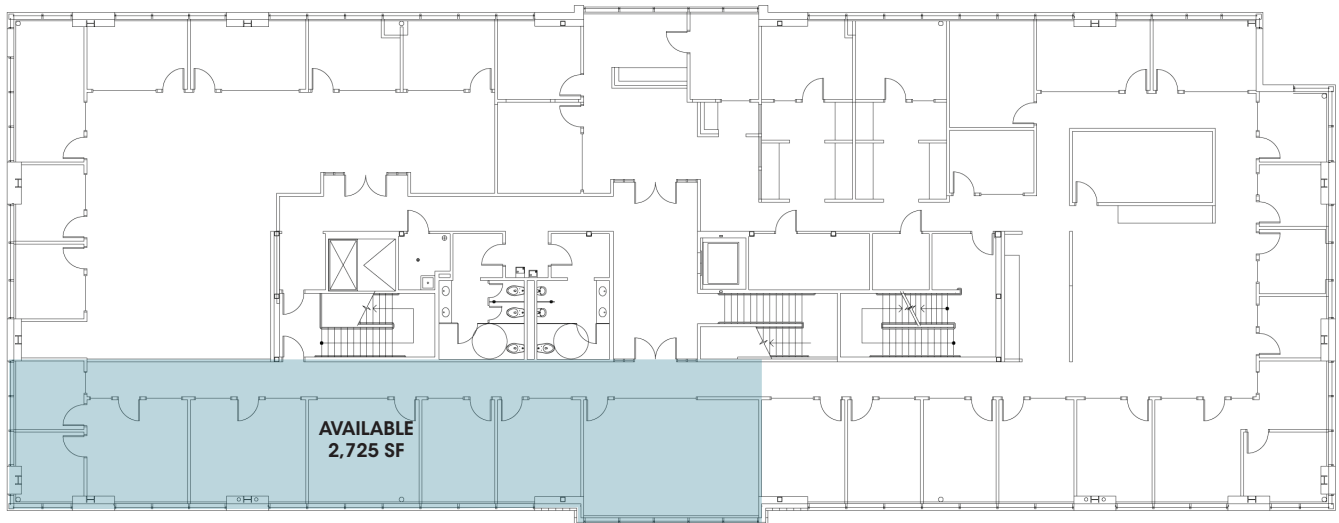
1800 SW First Avenue, Suite 650 | Portland OR 97201 | WWW.MACADAMFORBES.COM | 503.227.2500

1700 NW Civic Drive

Gresham, Oregon

FOR **LEASE**

SECOND FLOOR



AVAILABLE SPACE 2,725 RSF **LEASE RATE** \$23.00 PSF - Full Service **PARKING** Negotiable



Colin Russell
503.972.7295
colin@macadamforbes.com