

9.15 ACRE DEVELOPEMENT SITE

Hwy 301 & CR 227 Starke, FL 32901



FOR SALE

FOR MORE INFORMATION:



Eric Ligman

Director

352.256.2112

ericligman@bosshardtrealty.com



BOSSHARDT

— REALTY SERVICES —

COMMERCIAL & LAND DIVISION

9.15 ACRE DEVELOPEMENT SITE

EXECUTIVE SUMMARY

Hwy 301 & CR 227 Starke, FL 32901



OFFERING SUMMARY

Sale Price: \$1,250,000

District: Commercial

Lot Size: 9.15 Acres

Price / Acre: \$136,612

PROPERTY OVERVIEW

9.15-acre development site situated south of the newly built HWY 301 Bypass. Adjacent to a recently sold 7.23-acre RaceTrac truck stop, the site offers access to HWY 301 and County Road 227, complemented by established cross easements.

PROPERTY HIGHLIGHTS

- Commercial Zoning
- Just reduced
- Tax Parcel #: 04761-0-00000
- Ingress/egress from 301 is being constructed and funded by RacTrac
- AADT 29,249

FOR MORE INFORMATION:



Eric Ligman
Director
352.256.2112
ericligman@bosshardtrealty.com



9.15 ACRE DEVELOPEMENT SITE

REGIONAL MAP

Hwy 301 & CR 227 | Starke, FL 32901



FOR MORE INFORMATION:



Eric Ligman

Director

352.256.2112

ericligman@bosshardtrealty.com



BOSSHARDT
— REALTY SERVICES —

COMMERCIAL & LAND DIVISION

9.15 ACRE DEVELOPEMENT SITE

Hwy 301 & CR 227 Starke, FL 32901



FOR MORE INFORMATION:



Eric Ligman

Director

352.256.2112

ericligman@bosshardtrealty.com



BOSSHARDT
— REALTY SERVICES —

COMMERCIAL & LAND DIVISION

9.15 ACRE DEVELOPEMENT SITE

Hwy 301 & CR 227 | Starke, FL 32901



FOR MORE INFORMATION:



Eric Ligman

Director

352.256.2112

ericligman@bosshardtrealty.com



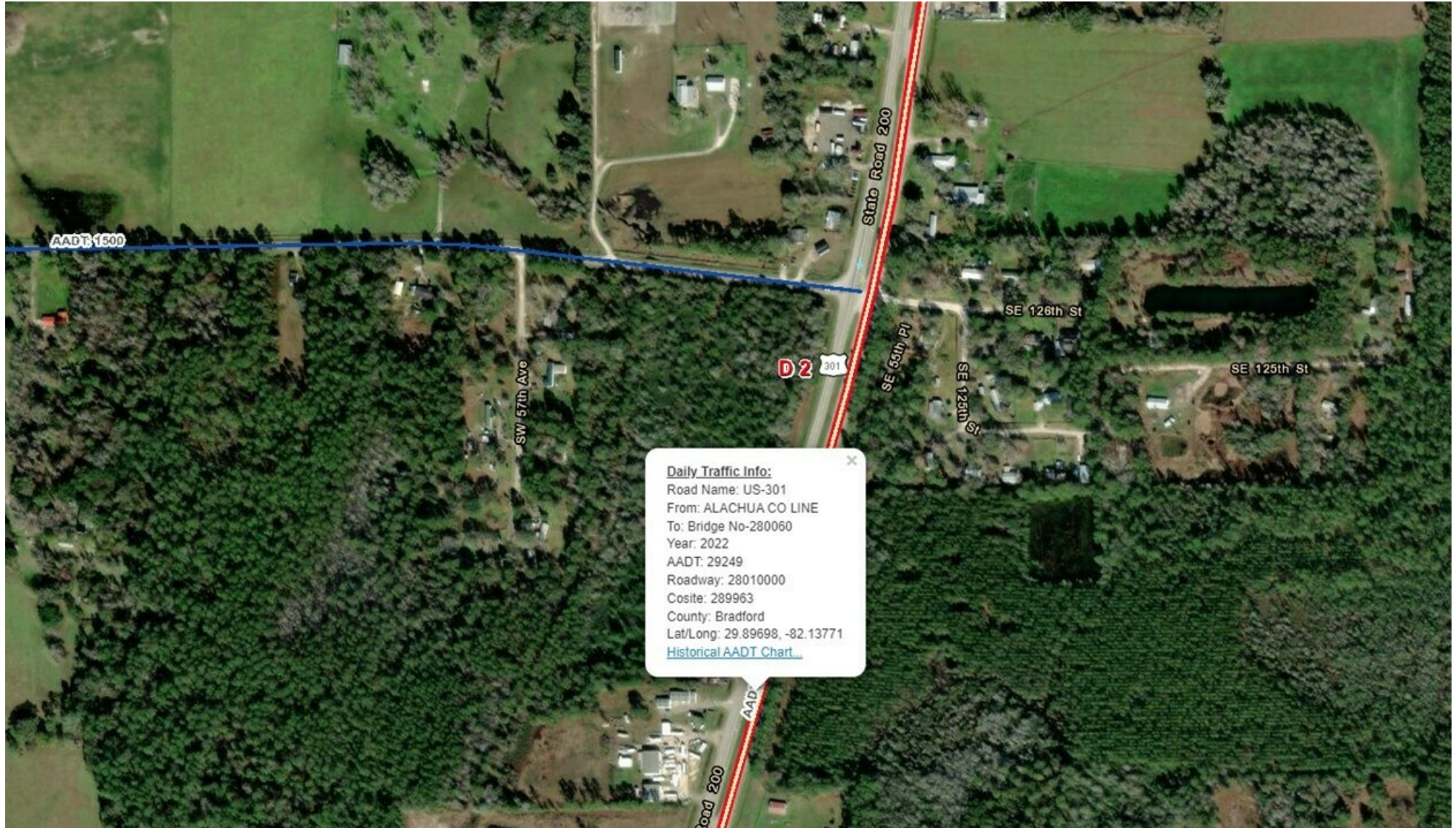
BOSSHARDT
— REALTY SERVICES —

COMMERCIAL & LAND DIVISION

9.15 ACRE DEVELOPEMENT SITE

AADT 29,249

Hwy 301 & CR 227 | Starke, FL 32901



FOR MORE INFORMATION:



Eric Ligman

Director

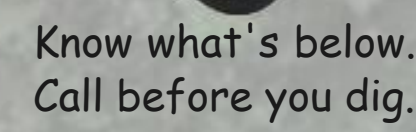
352.256.2112

ericligman@bosshardtrealty.com



BOSSHARDT
— REALTY SERVICES —

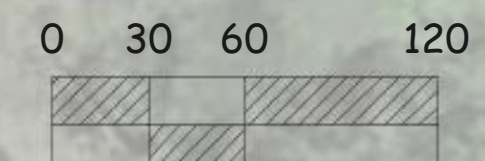
COMMERCIAL & LAND DIVISION



Subject Property

SUBJECT PROPERTY
719614 SQ. FT. ±
16.52 ACRES ±
NOTE: PROPERTY BOUNDARIES ARE APPROXIMATE

CONTACT RACETRAC PETROLEUM, INC. PROJECT MANAGER PRIOR TO ANY REVISIONS TO THE PLAN SUPPLIED BY RACETRAC PETROLEUM, INC.

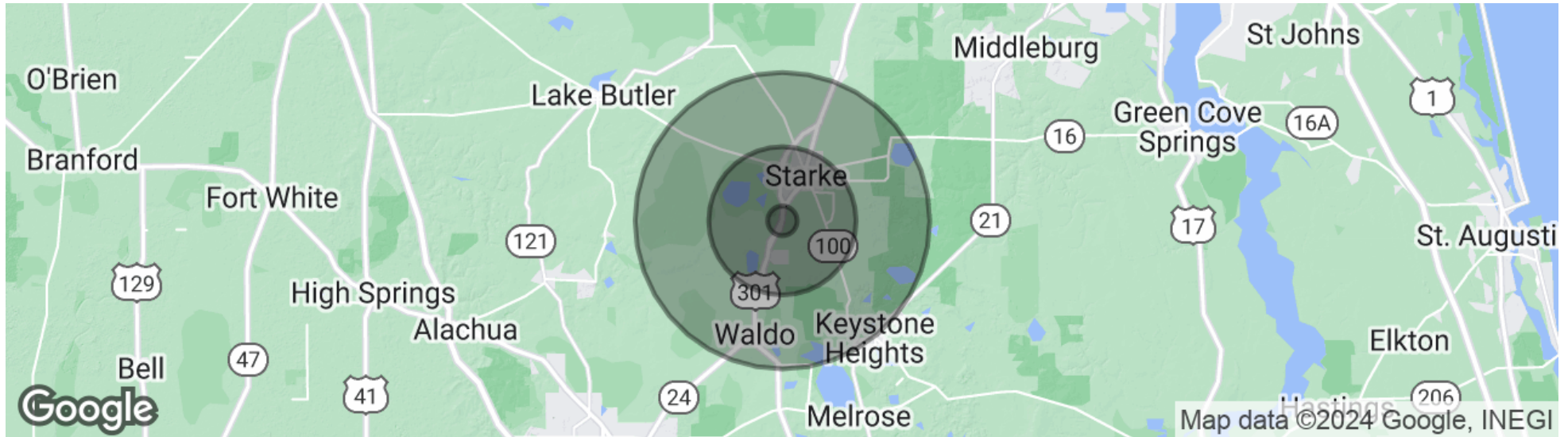


<p>SITE PLAN</p>		<p>THESE PLANS ARE SUBJECT TO FEDERAL</p>		<p>USE <input checked="" type="checkbox"/> SAME <input type="checkbox"/> <input type="checkbox"/></p> <p>WITHOUT THE</p>		<p>COPYRIGHT LAWS: ANY</p>			
<p>PROJECT NAME / INTERSECTION</p>		<p>Address</p> <p>City, State</p> <p>County</p>		<p>RACETRAC PETROLEUM, INC. EXPRESSED WRITTEN CONSENT FOR THE PREPARATION OF THESE PLANS DATE: 4/15/2021 SHEET: 900 OF 1014, 64 303398 RACETRAC PETROLEUM, (770) 433-7600 INC. IS PROHIBITED</p>					
<p>DRAWN-BY</p>		<p>A WONG</p>							
<p>DATE</p>		<p>4/15/2021</p>							
<p>SCALE</p>		<p>1" = 60'</p>							
<p>DRAWING NAME:</p>		<p>Starke TC Parcel Overlay.dwg</p>							
<p>SHEET NO.</p>		<p>VERSION</p>							

9.15 ACRE DEVELOPEMENT SITE

DEMOGRAPHICS MAP & REPORT

Hwy 301 & CR 227 Starke, FL 32901



POPULATION

	1 MILE	5 MILES	10 MILES
Total population	245	8,225	26,296
Median age	41.6	39.2	39.8
Median age (Male)	40.6	38.6	38.8
Median age (Female)	44.6	41.7	41.7

HOUSEHOLDS & INCOME

	1 MILE	5 MILES	10 MILES
Total households	80	2,716	8,745
# of persons per HH	3.1	3.0	3.0
Average HH income	\$54,050	\$48,723	\$50,501
Average house value	\$173,148	\$171,045	\$179,575

* Demographic data derived from 2020 ACS - US Census

FOR MORE INFORMATION:



Eric Ligman

Director

352.256.2112

ericligman@bosshardtrealty.com



BOSSHARDT

— REALTY SERVICES —

COMMERCIAL & LAND DIVISION

9.15 ACRE DEVELOPEMENT SITE

ADVISOR

Hwy 301 & CR 227 Starke, FL 32901



ERIC LIGMAN

Director

ericligman@bosshardtrealty.com

Direct: 352.256.2112 | **Cell:** 352.256.2112

PROFESSIONAL BACKGROUND

Eric Ligman is a prominent figure in the North Florida commercial real estate market, boasting over two decades of experience and an exceptional reputation for delivering results. As the Director of the Commercial and Land Division at Bosshardt Realty Services, Eric is known for his unwavering commitment to his clients and innovative strategies that achieve their goals.

Eric has played a pivotal role in transforming the North Florida landscape by brokering major deals with national and regional companies such as Pennsylvania Real Estate Trust, Campus USA Credit Union, TD Bank, Encell Technologies, RaceTrac, and Sunstate Credit Union. His expertise in navigating complex transactions and negotiating favorable client terms has earned him a trusted and indispensable reputation in the industry.

Eric is deeply dedicated to the North Florida community and is involved with local organizations such as the Ronald McDonald House Charities and the Junior League of Gainesville. His love for the area is reflected in his decision to raise his family there, and in his spare time, he enjoys playing on his highly-ranked tennis team and fishing.

In conclusion, Eric Ligman is a highly experienced and knowledgeable commercial real estate professional with an exceptional track record of success in the North Florida market. His unwavering dedication to his clients, innovative approach, and deep comprehension of the industry make him an invaluable asset for anyone seeking assistance with their commercial real estate endeavors. With Eric's expertise, clients can rest assured that they have a trusted partner to guide them through the complex world of local commercial real estate.

MEMBERSHIPS

ICSC

MEMBER

FOR MORE INFORMATION:



Eric Ligman

Director

352.256.2112

ericligman@bosshardtrealty.com



BOSSHARDT
— REALTY SERVICES —

COMMERCIAL & LAND DIVISION