

Land For Sale

AVAILABLE

6.5 Acres +/-

Future Land Use: Mixed - Use District

CRES
Commercial Real Estate, Inc.

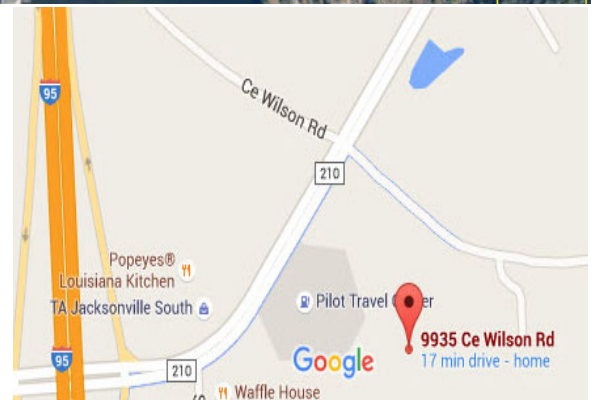


9935 C E Wilson Road
St. Johns County, Florida 32092

Land Assemblage-Multiple Owners

Property Features:

- SE Quadrant CR 210 W & I-95
- Close proximity & visibility CR 210 W
- 6.50 Acres +/-
- Future Land Use: Mixed-Use District
- Rezoning required Commercial Development
- Current Zoning: Open Rural Allows Senior Housing
- Water & Sewer to RPM Automotive - JEA
- High Growth Corridor St. Johns County, FL
- Twin Creeks DRI - 2,280 Homes Approved Within Minutes
- Left or Right Turn at CE Wilson Road & CR 210 W
- CE Wilson Road is privately owned. Owner will consider a non-exclusive access easement.



St. Johns County Strap Numbers:
260700000 & 02619400000

Price: \$1,350,000.00

Warren Tyre, CCIM
Broker -Principal
Cell: 904-910-4201
Email: watyre@cresjax.net

Linda L. Daniels, CCIM
Broker-Principal
Cell: 904-304-7222
Email: ldani0.00els@cresjax.net

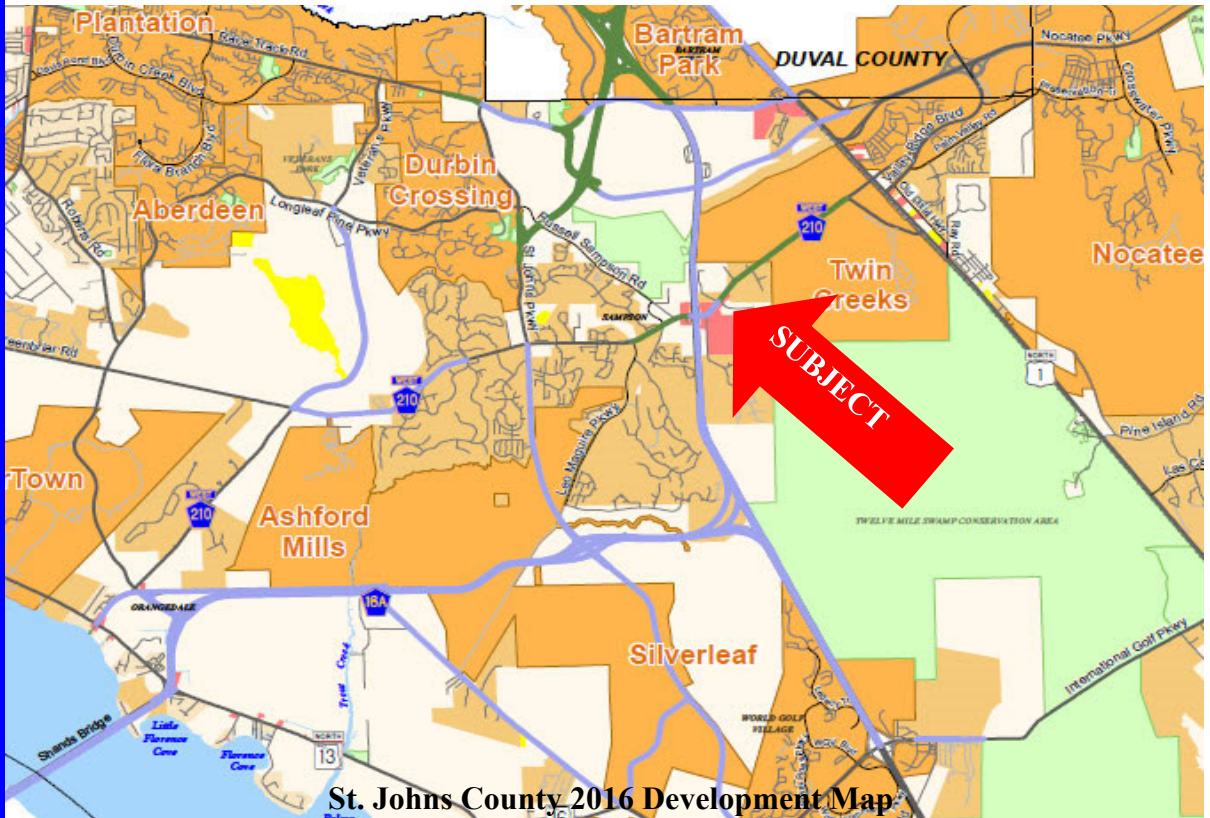
The information contained herein has been obtained from sources believed reliable. No warranty, representation, expressed or implied is made as to its accuracy, and same is submitted subject to errors, omissions, change of price, rental or other conditions, withdrawal without notice, and to any special listing conditions, imposed by our principals. The value and suitability of this transaction to you depends on tax, market and other factors which you should determine with the assistance of your tax, financial and legal advisors.

Land For Sale

St. Johns County Future Land Use Map

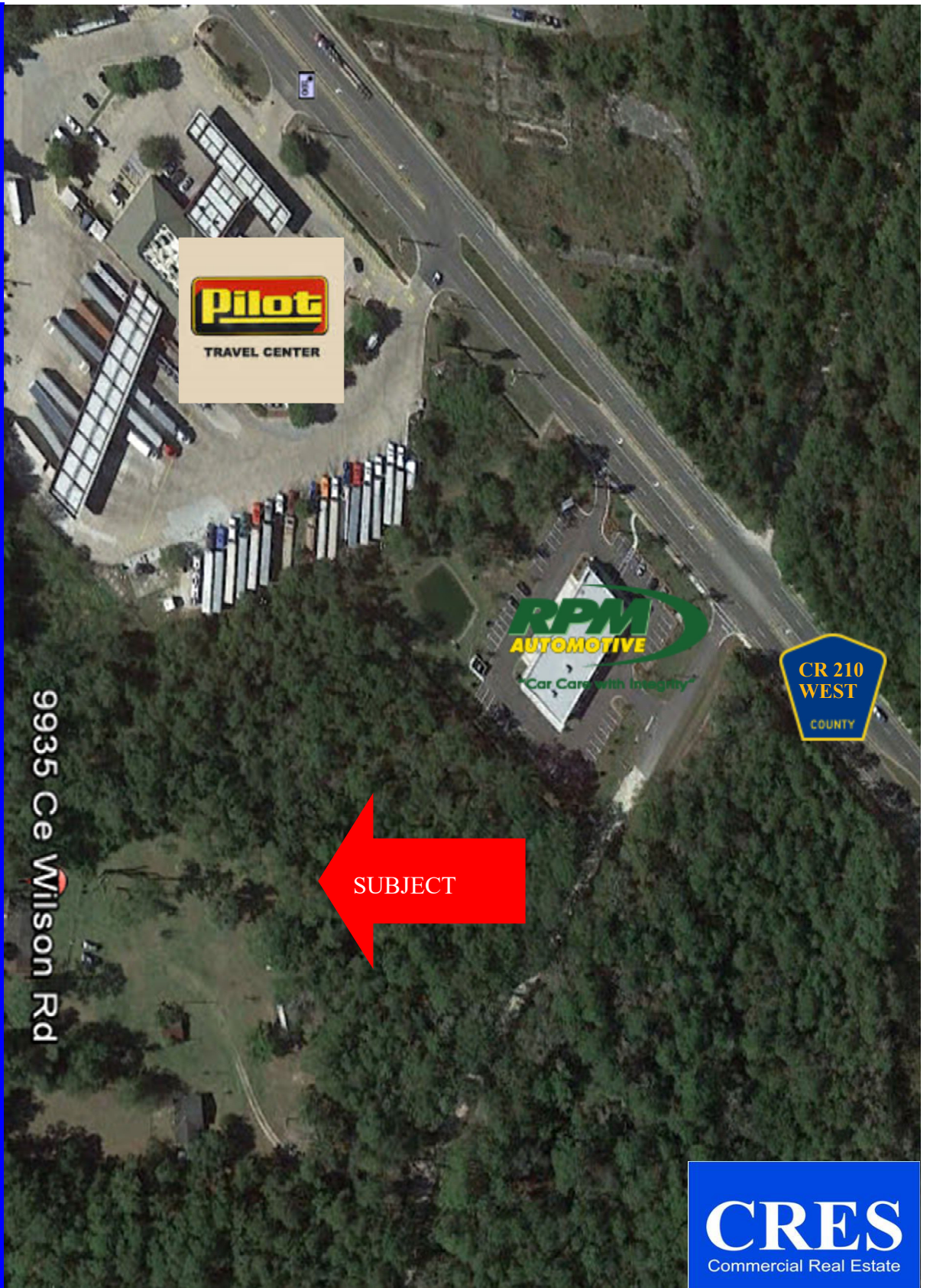


The information contained herein has been obtained from sources believed reliable. No warranty, representation, expressed or implied is made as to its accuracy, and same is submitted subject to errors, omissions, change of price, rental or other conditions, withdrawal without notice, and to any special listing conditions, imposed by our principals. The value and suitability of this transaction to you depends on tax, market and other factors which you should determine with the assistance of your tax, financial and legal advisors.



St. Johns County 2016 Development Map

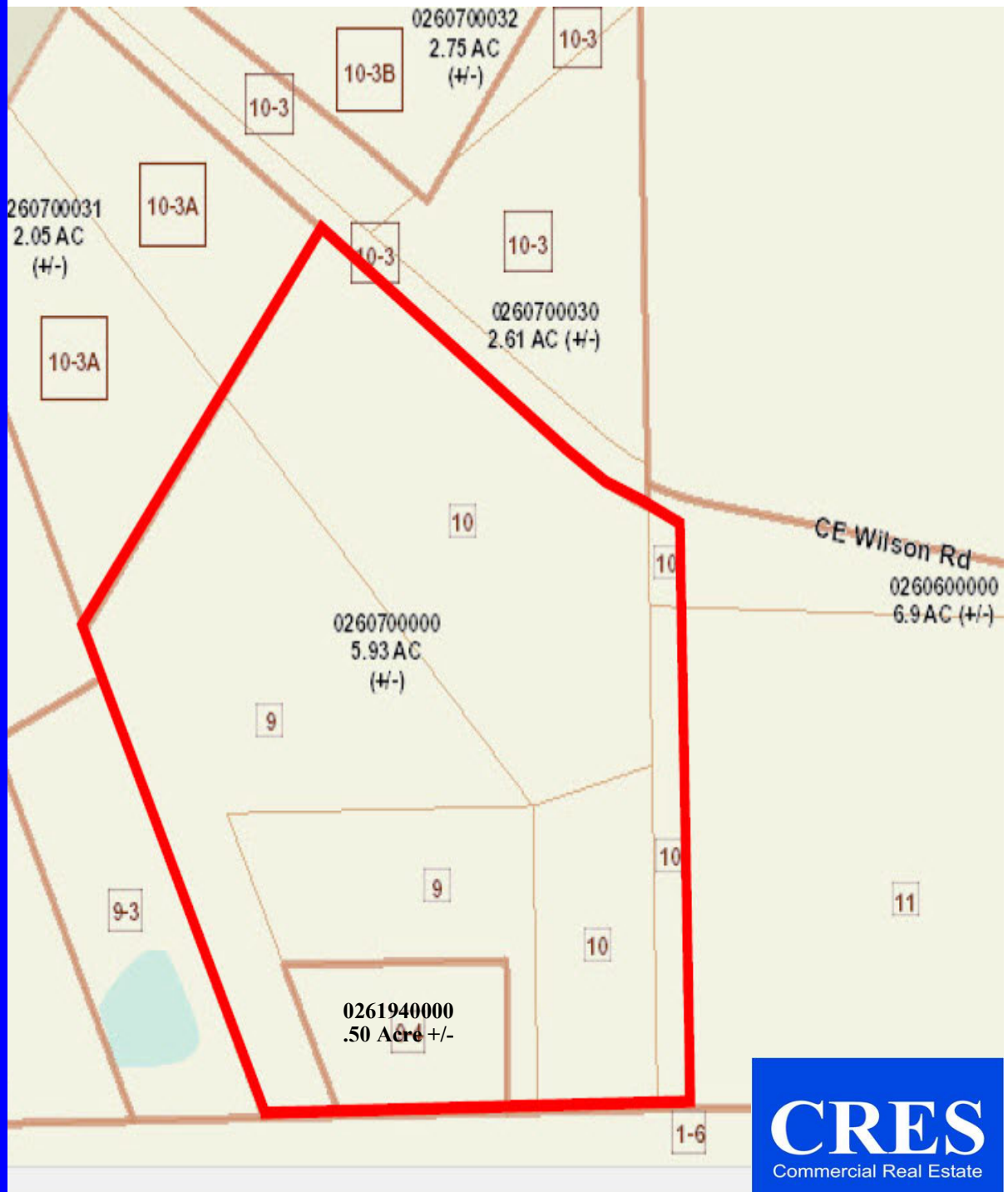
Land For Sale



The information contained herein has been obtained from sources believed reliable. No warranty, representation, expressed or implied is made as to its accuracy, and same is submitted subject to errors, omissions, change of price, rental or other conditions, withdrawal without notice, and to any special listing conditions, imposed by our principals. The value and suitability of this transaction to you depends on tax, market and other factors which you should determine with the assistance of your tax, fi-

Land For Sale

AVAILABLE
6.5 Acres +/-
Future Land Use: Mixed-District



The information contained herein has been obtained from sources believed reliable. No warranty, representation, expressed or implied is made as to its accuracy, and same is submitted subject to errors, omissions, change of price, rental or other conditions, withdrawal without notice, and to any special listing conditions, imposed by our principals. The value and suitability of this transaction to you depends on tax, market and other factors which you should determine with the assistance of your tax, financial and legal advisors.