

# OFFICE/WAREHOUSE SPACE W/SMALL FENCED PARKING LOT

1416-1418 OKEECHOBEE ROAD, WEST PALM BEACH, FL 33401



## Office/Warehouse Space For Lease



### PROPERTY OVERVIEW

5,100 SF office/warehouse space with fenced lot.

### PROPERTY HIGHLIGHTS

- Clean and open warehouse space with small air-conditioned office
- Exclusive use of fenced-in and paved parking lot/yard
- 14' clear ceiling height
- Each bay has one 12' x 10' grade level overhead door
- Minutes from Downtown West Palm Beach located in the Warehouse District

### OFFERING SUMMARY

Available SF:

Lease Rate:

Negotiable

Lot Size:

0.32 Acres

Year Built:

1975

Building Size:

7,800 SF

Renovated:

2013

Zoning:

GC - General Commercial

### AVAILABLE SPACES

SPACE	LEASE RATE	SIZE (SF)
-------	------------	-----------



**KD COMMERCIAL**  
REAL ESTATE

David W. Knott  
561.662.5758  
dknott@kdcre.com

Ryan R. Dinsdale, CCIM  
561.504.6169  
rdinsdale@kdcre.com



## OFFICE/WAREHOUSE SPACE W/SMALL FENCED PARKING LOT

1416-1418 OKEECHOBEE ROAD, WEST PALM BEACH, FL 33401



## Office/Warehouse Space For Lease



**KD COMMERCIAL**  
REAL ESTATE

David W. Knott  
561.662.5758  
dknott@kdcre.com

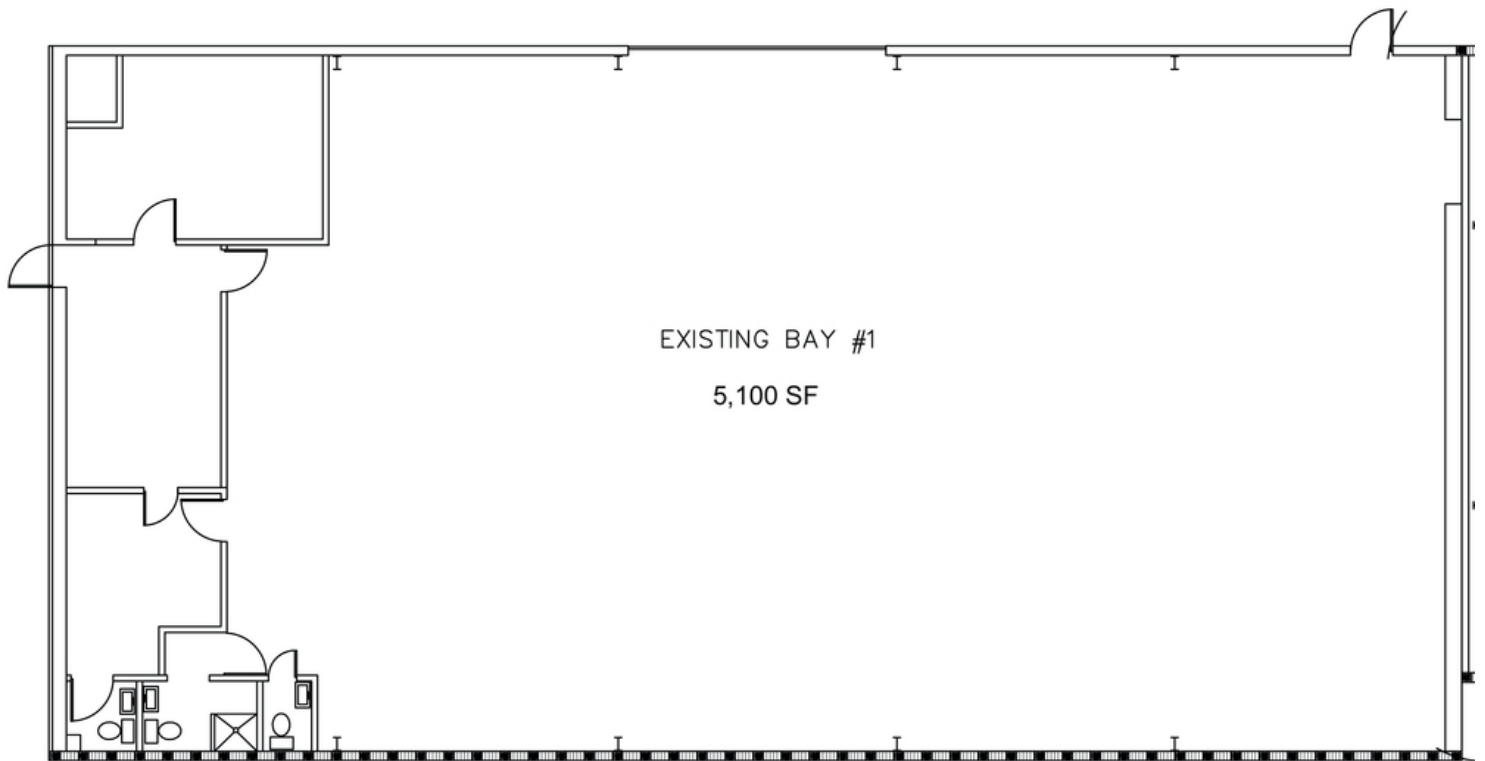
Ryan R. Dinsdale, CCIM  
561.504.6169  
rdinsdale@kdcre.com

## OFFICE/WAREHOUSE SPACE W/SMALL FENCED PARKING LOT

1416-1418 OKEECHOBEE ROAD, WEST PALM BEACH, FL 33401



## Floor Plan



**KD COMMERCIAL**  
REAL ESTATE

David W. Knott  
561.662.5758  
dknott@kdcre.com

Ryan R. Dinsdale, CCIM  
561.504.6169  
rdinsdale@kdcre.com



# OFFICE/WAREHOUSE SPACE W/SMALL FENCED PARKING LOT

1416-1418 OKEECHOBEE ROAD, WEST PALM BEACH, FL 33401



## Interior Photos - Bay #1



**KD COMMERCIAL**  
REAL ESTATE

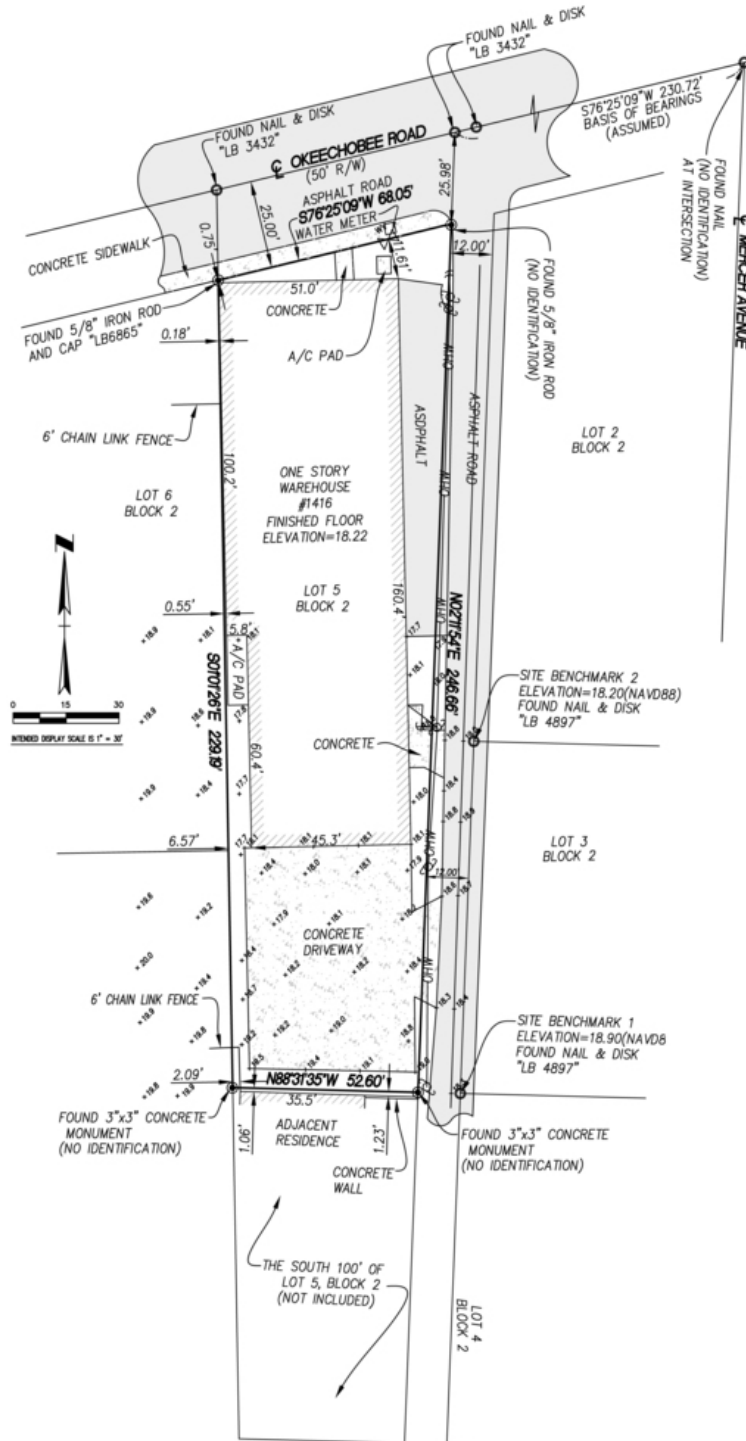
David W. Knott  
561.662.5758  
dknott@kdcre.com

Ryan R. Dinsdale, CCIM  
561.504.6169  
rdinsdale@kdcre.com

1416-1418 OKEECHOBEE ROAD, WEST PALM BEACH, FL 33401



# Survey

KD COMMERCIAL  
REAL ESTATE

David W. Knott      Ryan R. Dinsdale, CCIM  
561.662.5758      561.504.6169  
dknott@kdcre.com      rdinsdale@kdcre.com

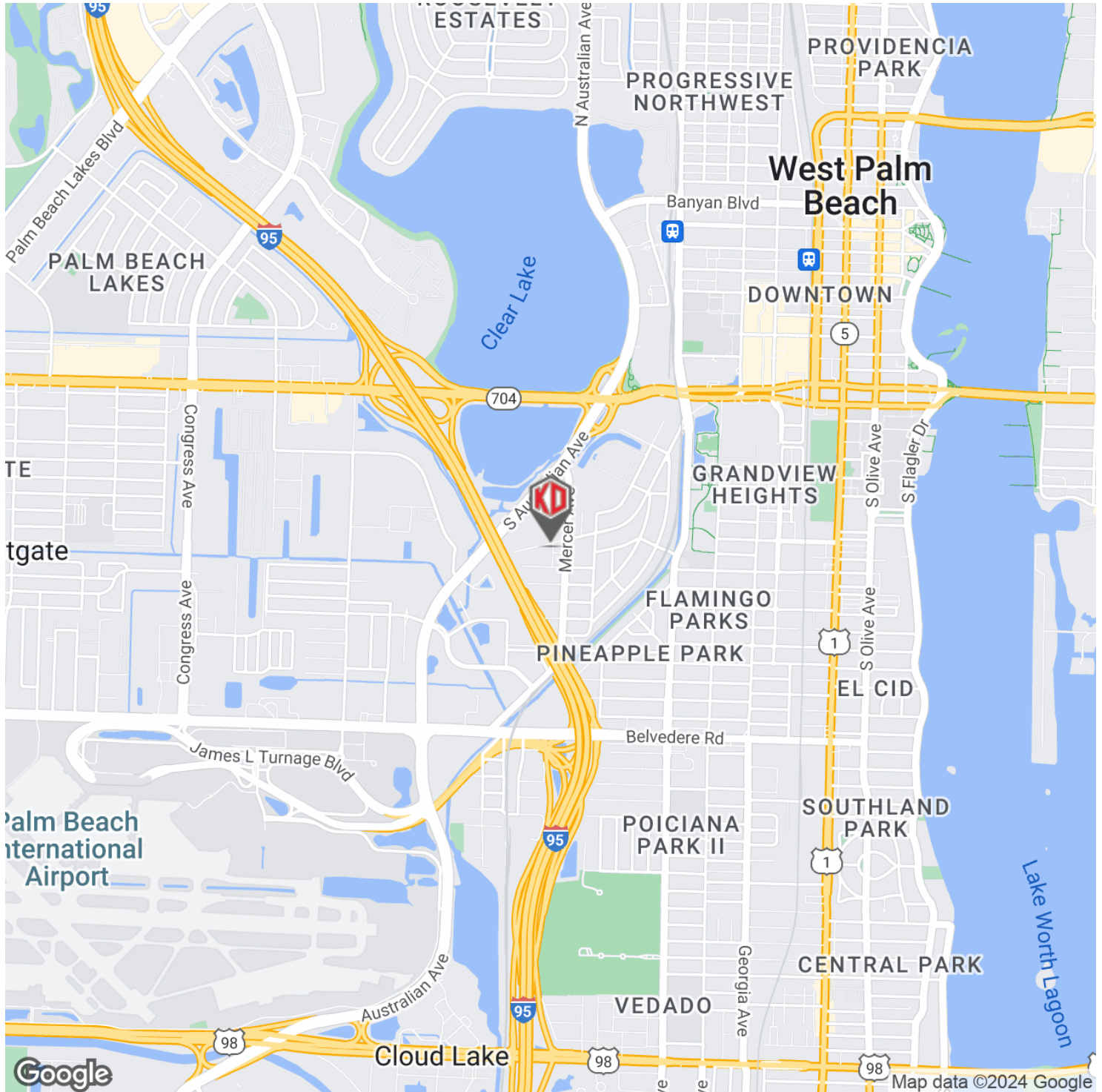


# OFFICE/WAREHOUSE SPACE W/SMALL FENCED PARKING LOT

1416-1418 OKEECHOBEE ROAD, WEST PALM BEACH, FL 33401



## Location Map



**KD COMMERCIAL**  
REAL ESTATE

David W. Knott  
561.662.5758  
dknott@kdcre.com

Ryan R. Dinsdale, CCIM  
561.504.6169  
rdinsdale@kdcre.com

No warranty or representation, express or implied, is made as to the accuracy or completeness of the information contained herein, and is submitted subject to errors, omissions, change of terms or conditions, withdrawal without notice, and to any special listing conditions imposed by the property owner(s). Additionally, no representation is made as to the condition of the property in question.