

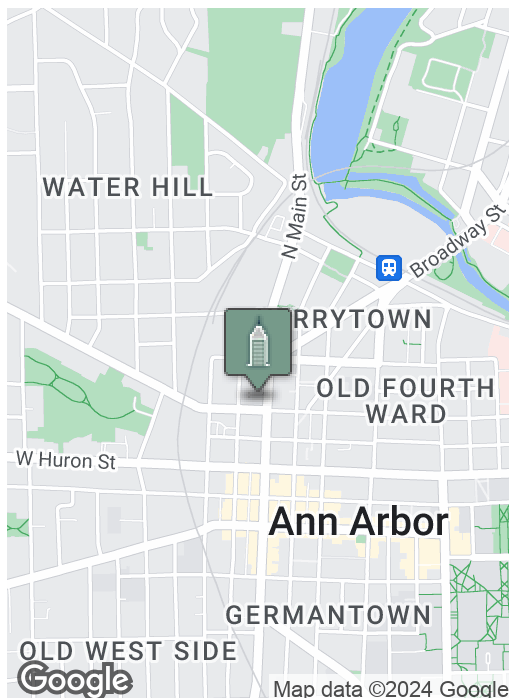
Prime Downtown Office WITH PARKING

301 N. MAIN, ANN ARBOR, MI 48104



Swisher
COMMERCIAL

FOR LEASE



SUMMARY

Lease Rate:

\$34.28 SF/yr
plus utilities

Available SF:

4,200 SF

Zoning:

D1

PROPERTY HIGHLIGHTS

- Prime downtown office suite with highly sought after 10 free parking spaces
- Additional municipal structure and parking nearby
- Within walking distance to local retail and restaurants
- Entire ground floor office space with private entrance
- Private offices and conference areas
- Lots of character and windows for ample natural light
- 200 sf of locked storage in basement
- Immediate occupancy

***Building
relationships.***

208 East Washington Street Ann Arbor, MI 48104

734.663.0501

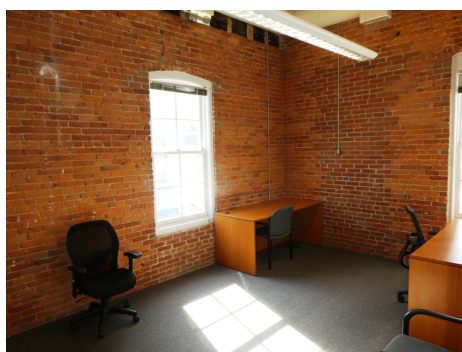
Michael Jurgenson, CCIM 734.222.7522

MIKEJ@SWISHERCOMMERCIAL.COM

SWISHERCOMMERCIAL.COM

Downtown Office Space for Lease

301 N. MAIN, ANN ARBOR, MI 48104



***Building
relationships.***

208 East Washington Street Ann Arbor, MI 48104

734.663.0501

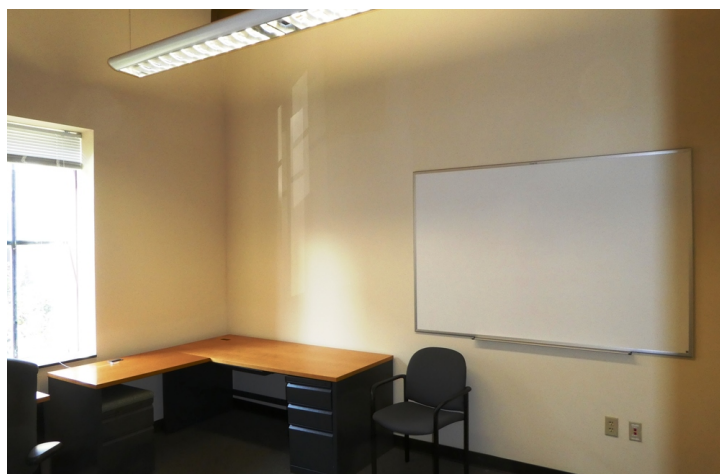
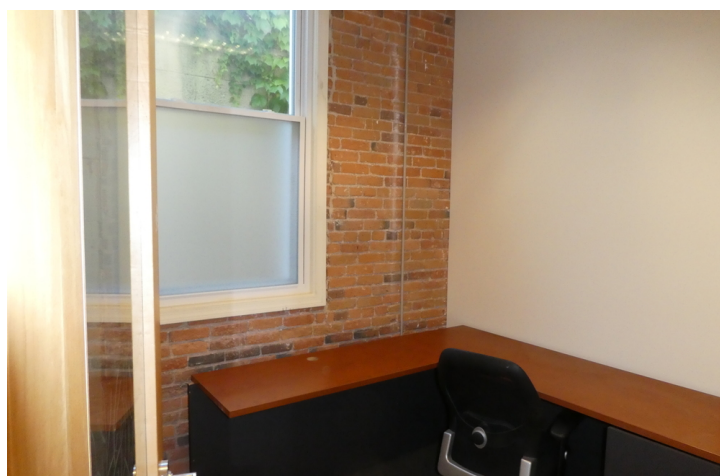
Michael Jurgenson, CCIM 734.222.7522

MIKEJ@SWISHERCOMMERCIAL.COM

SWISHERCOMMERCIAL.COM

Downtown Ann Arbor Office WITH PARKING

301 N. MAIN, ANN ARBOR, MI 48104



***Building
relationships.***

208 East Washington Street Ann Arbor, MI 48104

734.663.0501

Michael Jurgenson, CCIM 734.222.7522

MIKEJ@SWISHERCOMMERCIAL.COM

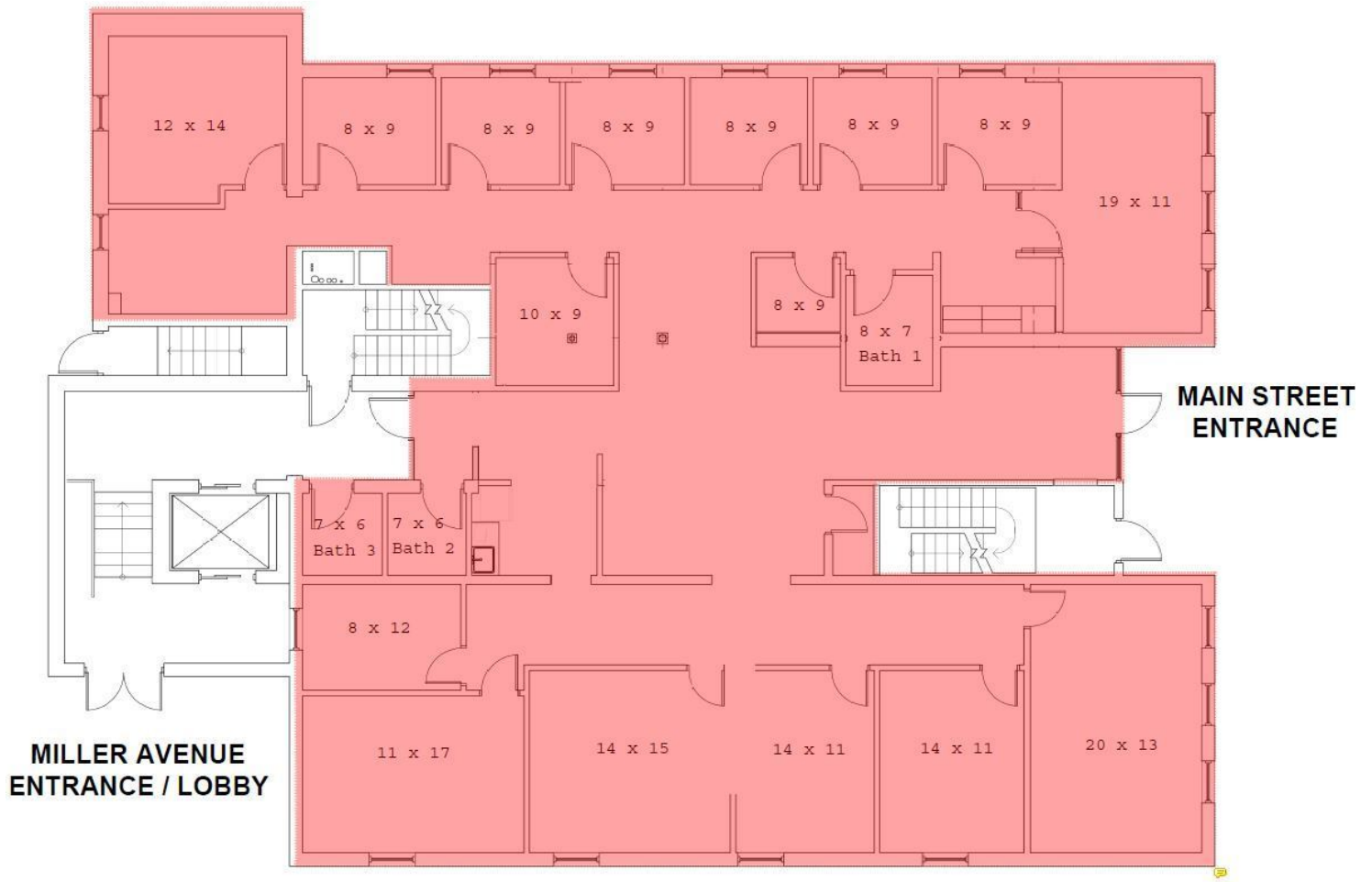
SWISHERCOMMERCIAL.COM

Downtown Ann Arbor Office WITH PARKING

301 N. MAIN, ANN ARBOR, MI 48104



301 N. Main - 1st Floor Office Layout



***Building
relationships.***

208 East Washington Street Ann Arbor, MI 48104

734.663.0501

Michael Jurgenson, CCIM 734.222.7522

MIKEJ@SWISHERCOMMERCIAL.COM

SWISHERCOMMERCIAL.COM

Downtown Office Space for Lease

301 N. MAIN, ANN ARBOR, MI 48104



**Building
relationships.**

208 East Washington Street Ann Arbor, MI 48104

734.663.0501

Michael Jurgenson, CCIM 734.222.7522

MIKEJ@SWISHERCOMMERCIAL.COM

SWISHERCOMMERCIAL.COM