

RETAIL FOR LEASE

114 W MAIN AVE | BISMARCK, ND





OFFERING SUMMARY

Lease Rate SF/Yr:	\$14.00 (NNN)
Lease Rate Monthly:	\$4,266.50 (NNN)
Building Size:	12,839 SF
Available SF:	
Year Built:	1942
Zoning:	DC - Core Zoning
Tenant Responsibility:	Real Estate Taxes, Building Insurance, Common Area Expenses, All Utilities, and Renter's Insurance.
Landlord Responsibility:	Structural integrity of the exterior walls, roof, & foundation

PROPERTY OVERVIEW

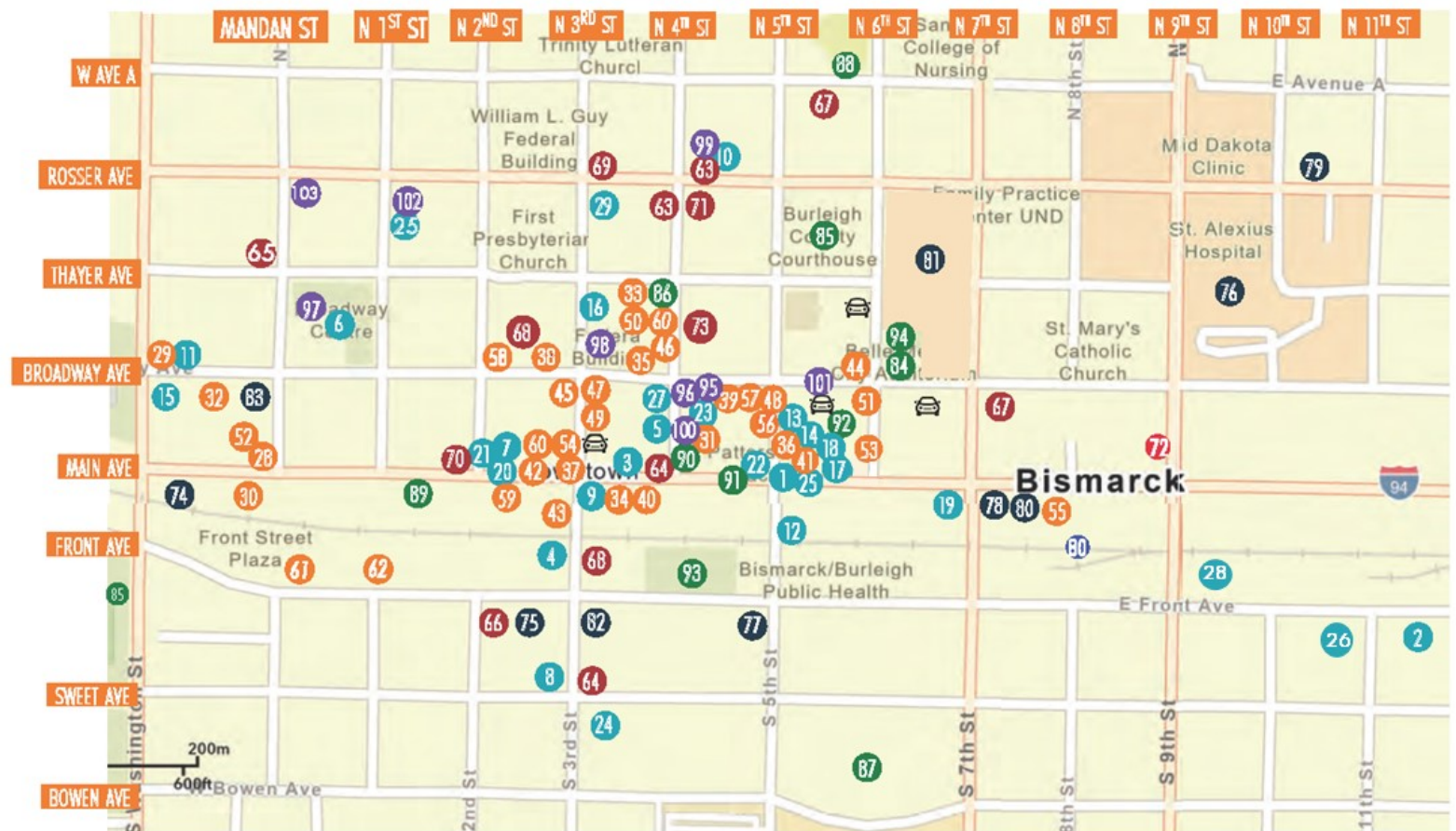
Great Downtown Bismarck location with newly renovated shell condition and outdoor patio. Tenant estimated NNN cost to be determined. 114 West Main Avenue has a Walk Score of 89 out of 100. This location is very walkable so most errands can be accomplished on foot. *Lease application may be required.

PROPERTY HIGHLIGHTS

- Outdoor Patio
- 12'x10' Overhead Glass Door
- Open Industrial Floor Plan
- 14' Sidewalls
- Walk Score of 89
- PID#: 0001-056-020
- Taxes (2022): \$13,963.00



WELCOME TO DOWNTOWN BISMARCK



Food/Beverage

- 1 Anima Cucina
- 2 Bistro 1100
- 3 Blamey Stone Pub
- 4 Borrowed Bucks Roadhouse
- 5 Brick Oven Bakery
- 6 Broadway Grill & Tavern
- 7 Butterhorn
- 8 Buffalo Wild Wings
- 9 Coffee Break
- 10 The CraftCade
- 11 Dairy Queen
- 12 Elbow Room / Roundhouse
- 13 Fireflour Pizzeria
- 14 Gideon's Brewing Company
- 15 Little Odessa
- 16 JL Beers
- 17 Jimmy V's
- 18 Luft
- 19 McDonalds
- 20 NoodleZip
- 21 Nutrition Ambition
- 22 Peacock Alley
- 23 Pirogue Grille
- 24 Noodles & Company
- 25 Yim Siam Thai
- 26 Laughing Sun Brewing Co.
- 27 The Toasted Frog
- 28 Bruno's Pizza
- 29 Nara Ramen & Izakaya

Shopping/Retail

- 28 Bismarck Antique Mall
- 29 Blink Eyewear
- 30 Boutique 23
- 31 Bridal N' More
- 32 Brides on a Dime
- 33 Concrete Daisiez
- 34 Crabapple Floral
- 35 Dakota Nuts-N-Candy
- 36 Desirae's Makeup & Beauty Lounge
- 37 Down Home General Store
- 38 Studio 208
- 39 Ferguson Books & More!
- 40 Fleck's Furniture and Appliance
- 41 Halbertstad's ND
- 42 Hiccups
- 43 J & R Vacuum & Sewing
- 44 Kokkeler's Jewelry
- 45 Modify Alterations & Boutique
- 46 Kept
- 47 lula b. boutique
- 48 Magic Photo Art
- 49 Modern Eyes
- 50 Punky's Bath & Gift Shop
- 51 Red Wing Shoes
- 52 Rhythm Records
- 53 Seeds of Hope Thrift Store
- 54 Stella's
- 55 Terry's Health Products
- 56 Walkers n' Daughters Jewelers

- 57 Westley's Jewelry
- 58 White Lace Bridal/Black Tie Optional
- 59 Zimmerman's Furniture
- 60 Dallas Lee Boutique
- 61 Plato's Closet
- 62 Clothes Mentor

Banking

- 63 Bravera Bank
- 64 BNC National Bank
- 65 Capital Credit Union
- 66 Choice Bank
- 67 First Community Credit Union
- 68 U.S. Bank
- 69 Gate City Bank
- 70 Kirkwood Bank and Trust
- 71 Starion Financial
- 72 Vue Community Credit
- 73 Wells Fargo

Health/Wellness

- 74 Active Life Chiropractic
- 75 BisMan Chiropractor & Acupuncture
- 76 CHI St. Alexius Hospital
- 77 Dakota Eye Institute
- 78 Dakota Pharmacy
- 79 MidDakota Clinic
- 80 Dakota Natural Health Center
- 81 Sanford Health
- 82 Smiles By Design
- 83 Proximal 50

Community/Recreation

- 84 Belle Mehus Auditorium
- 85 Burleigh County Court House
- 86 Bismarck Downtown Artist Cooperative
- 87 Bismarck Event Center
- 88 Bismarck Veterans Memorial Public Library
- 89 Camp Hancock State Historic Site
- 90 The Capital Gallery
- 91 Dakota Stage Ltd.
- 92 Bismarck Art Alley
- 93 Peace Park
- 94 World War Memorial Building

Professional Services

- 95 The Barbers Wife
- 96 Glow Aesthetic Clinic
- 97 Broadway Centre Spa & Salon
- 98 Downtown Business Association
- 99 Glance Salon & Spa
- 100 Hi Honey Salon
- 101 Alchemist Tattoo
- 102 Sharp Mens Salon
- 103 Straight Edge Barber Shop

Parking Ramps

- Galleria Parking Ramp
- Parkade Parking Ramp
- Sixth & Thayer Parking Ramp
- Third & Main Parking Ramp



114 West Main Avenue

Downtown, Bismarck, 58501

Commute to **Downtown Bismarck**

1 min 6 min 2 min 7 min [View Routes](#)

Favorite

Map

Nearby Apartments

Walk Score

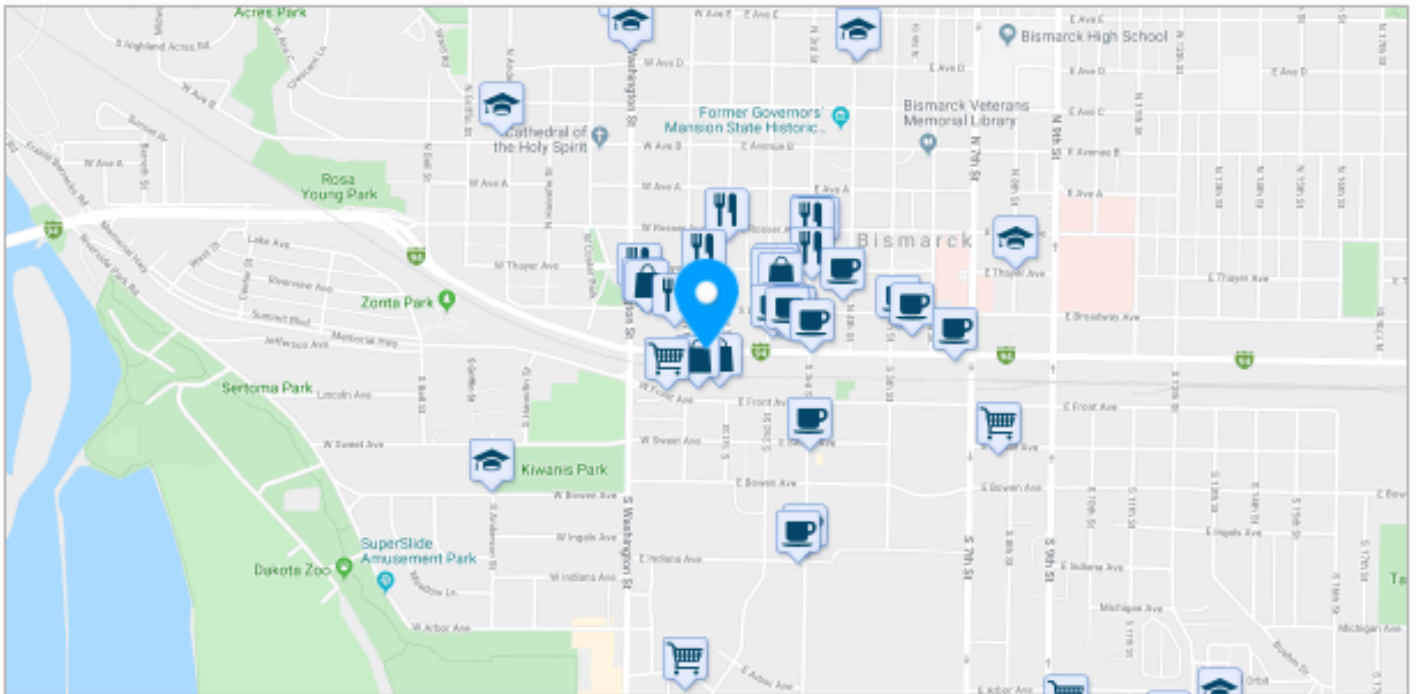
89

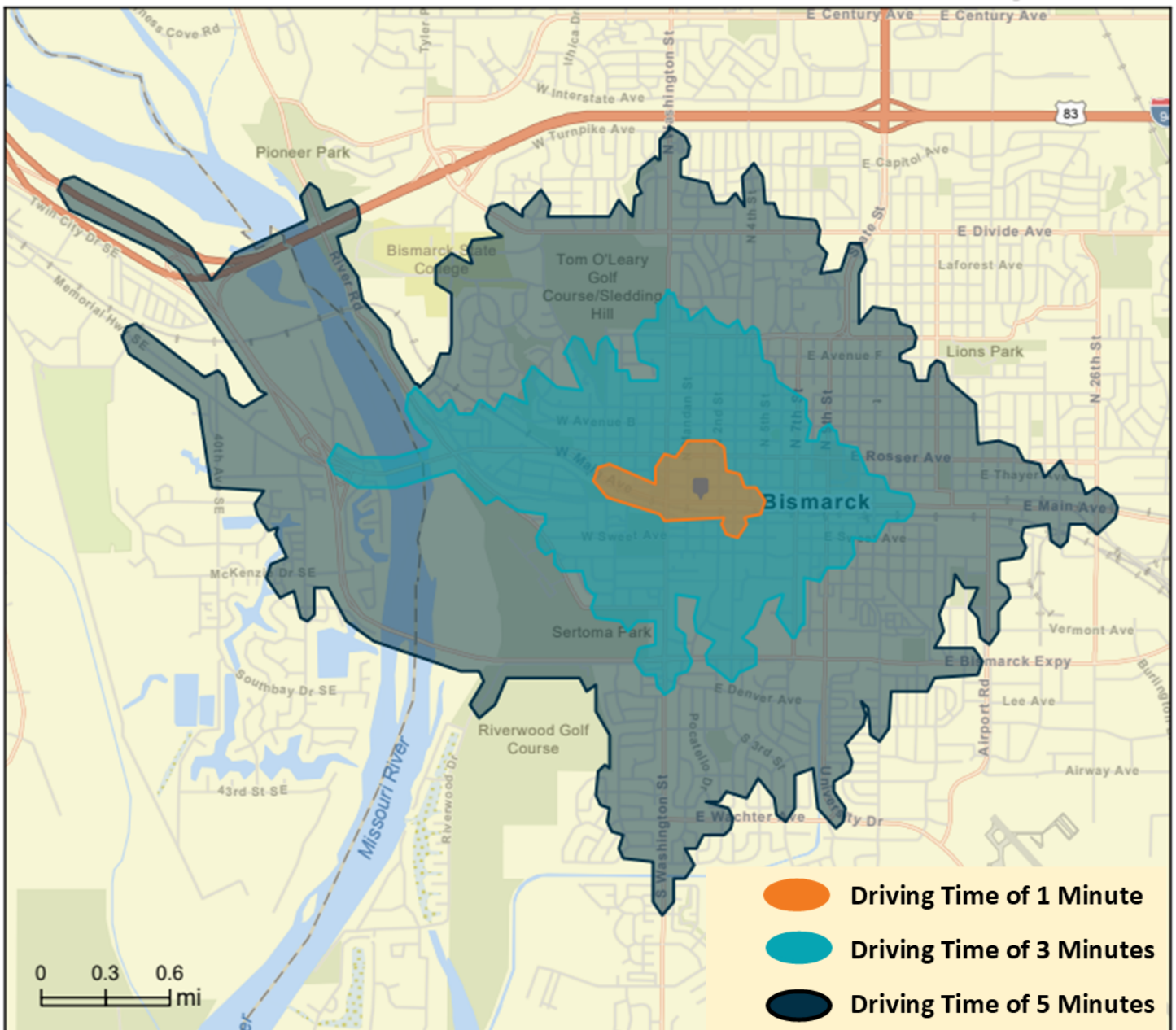
Very Walkable

Most errands can be accomplished on foot.

[About your score](#)

[Add scores to your site](#)





BUILDING RELATIONSHIPS. BUILDING THE COMMUNITY.™



**KYLE HOLWAGNER, CCIM,
SIOR**

Partner | Broker Associate

701.400.5373

kyle@thecragroup.com



**KRISTYN STECKLER,
COMMERCIAL REALTOR®**

Partner | Broker

701.527.0138

kristyn@thecragroup.com

STAY IN TOUCH



@THECRAGROUP



@THECRAGROUP



THE CRA GROUP

THECRAGROUP.com

THE CRA GROUP | 216 N 2ND ST | BISMARCK, ND 58501

Although information has been obtained from sources deemed reliable, neither Owner nor CRA makes any guarantees, warranties, or representations, express or implied, as to the completeness or accuracy as to the information contained herein. You should conduct a careful, independent investigation of the property and verify all information. Any reliance on this information is solely at your own risk. The Property may be withdrawn without notice. Neither Owner nor CRA accepts any liability for any loss or damage suffered by any party resulting from reliance on this information. Photos, logos, and other images herein are the property of their respective owners. Use of these images without the express written consent of the owner is prohibited.