



831 Cerise Road

831 Cerise Road
Billings, Montana 59101

Property Description

831 Cerise Road is well positioned near the 1-90 Interstate. The 5 plus acre site is fully asphalted and allows for excellent staging and storage. Ample office space, as well as a second building with 4 garage bays, makes the site a perfect fit for trucking-related businesses. Property positioned for new aesthetic finishes due to a pending insurance claim with over \$285,000.00 worth of working being done May 2020.

Property Highlights

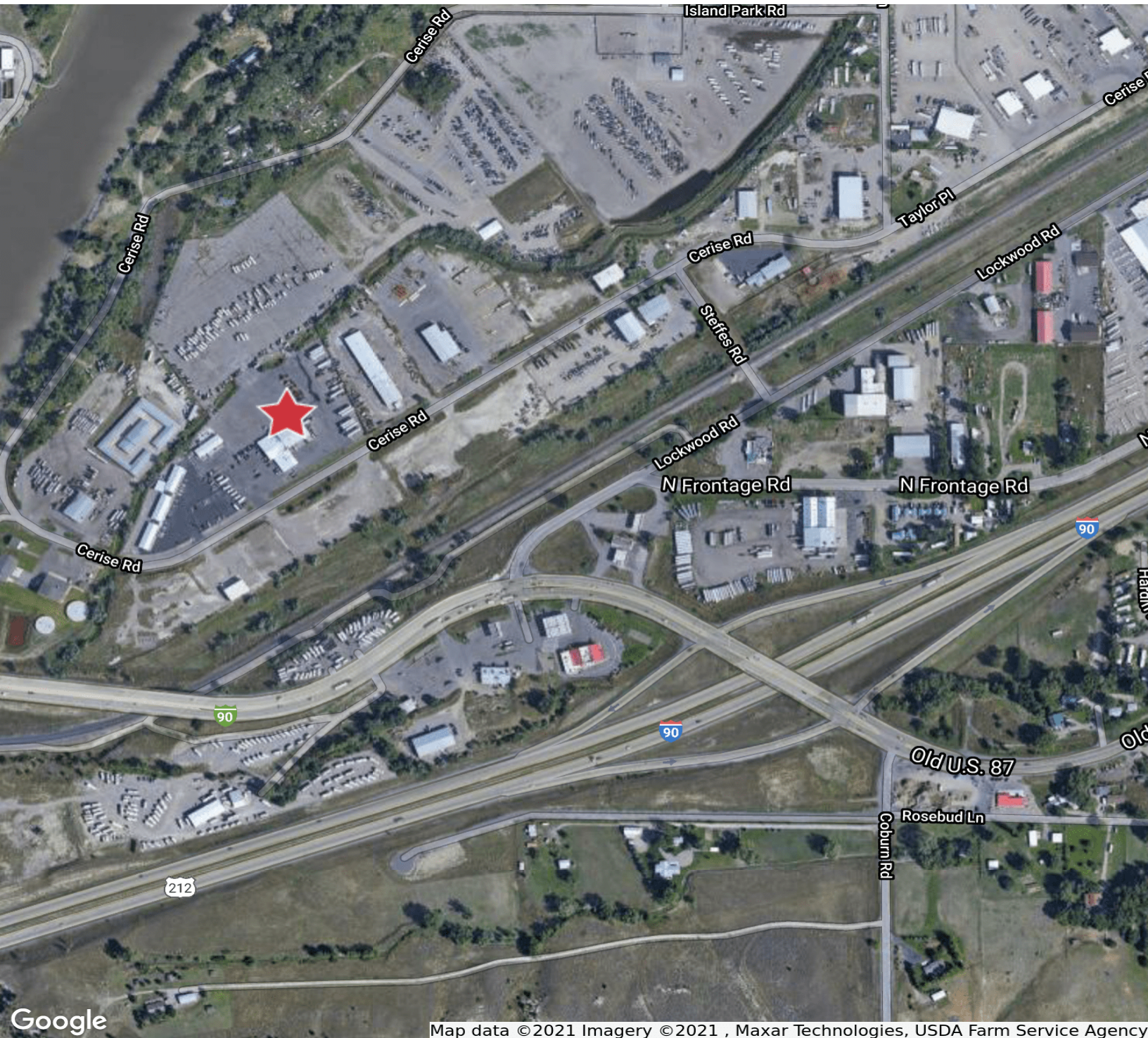
- 5+ acre site
- 3.5+ acres of Asphalt
- (8) 14-foot overhead doors with drive-through bays
- Fully fenced and secured parking
- Trailer Drop Pads
- Exterior Loading Dock
- Radiant tube heat
- Additional 3200 SF shop with 4 overhead doors
- Central air in the offices

OFFERING SUMMARY

Sale Price:	\$1,375,000
Lot Size:	5.079 Acres
Building Size:	22,000 SF







Map data © 2021 Imagery © 2021 , Maxar Technologies, USDA Farm Service Agency

