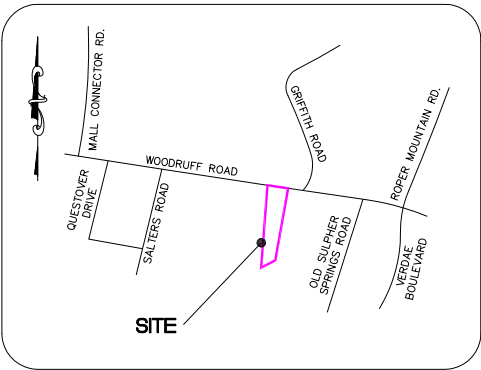
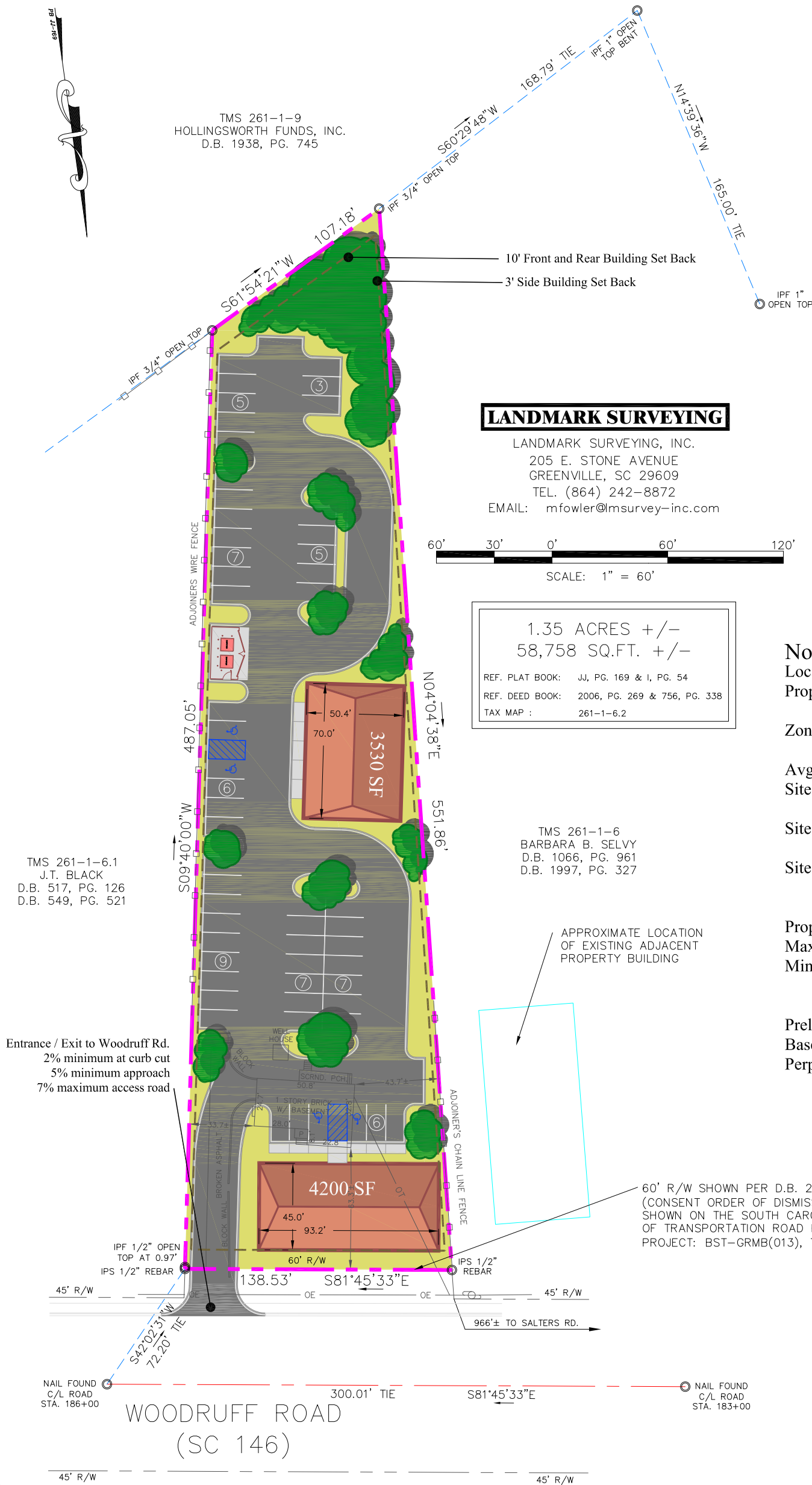


Preliminary Development Plan
876 Woodruff Road
Commercial Development
Greenville County, South Carolina



VICINITY MAP (NOT TO SCALE)

LEGEND	
○ IPS	IRON PIN SET
○ IPF	IRON PIN FOUND
R/W	RIGHT-OF-WAY
B/L	BUILDING SETBACK LINE
—	FENCE
⊙ PP	POWER POLE
— OE —	OVERHEAD ELECTRIC LINE
☆ LP	LIGHT POLE
— OT —	OVERHEAD TELEPHONE LINE

Notes:
Location address: 876 Woodruff Rd.
Property is outside Greenville City Limits of Greenville County, SC.
Zoned S1 (Service District), for Service Related uses, Commercial and Residential use.
Avg. annual traffic count is 10,600 per day.
Site is less than 1/2 mile from Interstate 385, and approximately 1 mile from Interstate 85.
Site is approximately 5 miles from Downtown Greenville.
Site is less than 2 mile from Eastside Medical Campus - Greenville Hospital System and St. Francis Hospital.
Proposed buildings total 7,730 SQ. FT.
Maximum building height is 40'.
Minimum parking spaces required for Health Care Facilities is 1 per 200 SQ. FT. or 39 spaces.
Spaces provided is 55.
Preliminary not for construction.
Base sheet information by others.
Perpared by Reece L Jackson.