

# OFFICE FOR LEASE

301 1ST ST NE | MANDAN, ND





## OFFERING SUMMARY

Lease Rate:	Negotiable
Building Size:	13,700 SF
Available SF:	
Year Built:	1976
Zoning:	Central Business District
Market:	Mandan

## PROPERTY OVERVIEW

2nd floor professional space with available sizes ranging from 188 sf to 5,560 sf (entire floor). Tenant just pays an estimated \$1.00 psf CAM and janitorial for the demised space. The north office suites have nice large windows. Furnishings available.

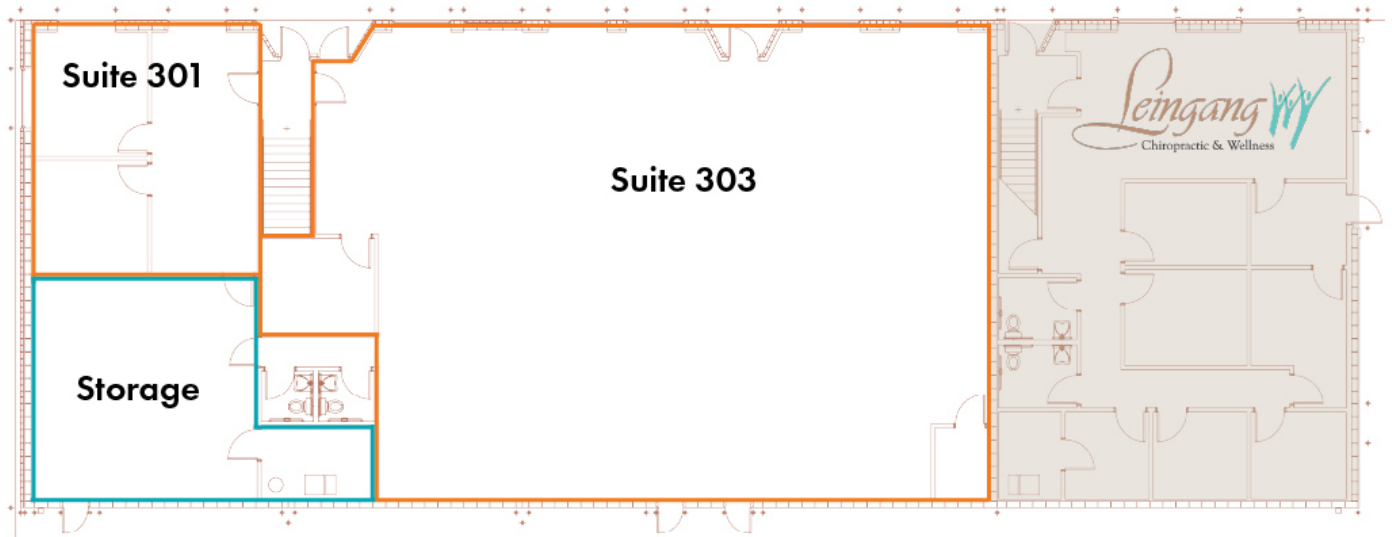
## PROPERTY HIGHLIGHTS

- Centrally Located in Downtown Mandan
- Good Signage Available
- Ample Parking
- Easy Access
- One Block off Main St
- 2nd Floor Space - No Elevator
- PID#: 65-2267000

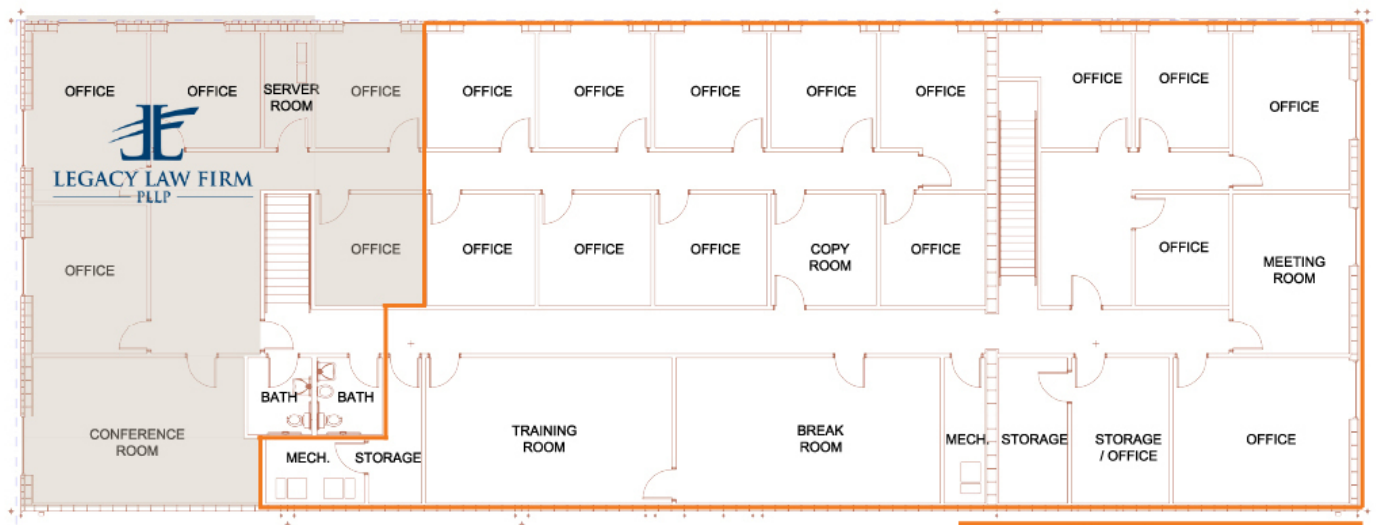
## SPACES

## LEASE RATE

## SPACE SIZE



First Floor



Second Floor Suites - 188 - 5,570 sf  
Subdivision subject to landlord approval

Second Floor





Suite 301



Suite 301

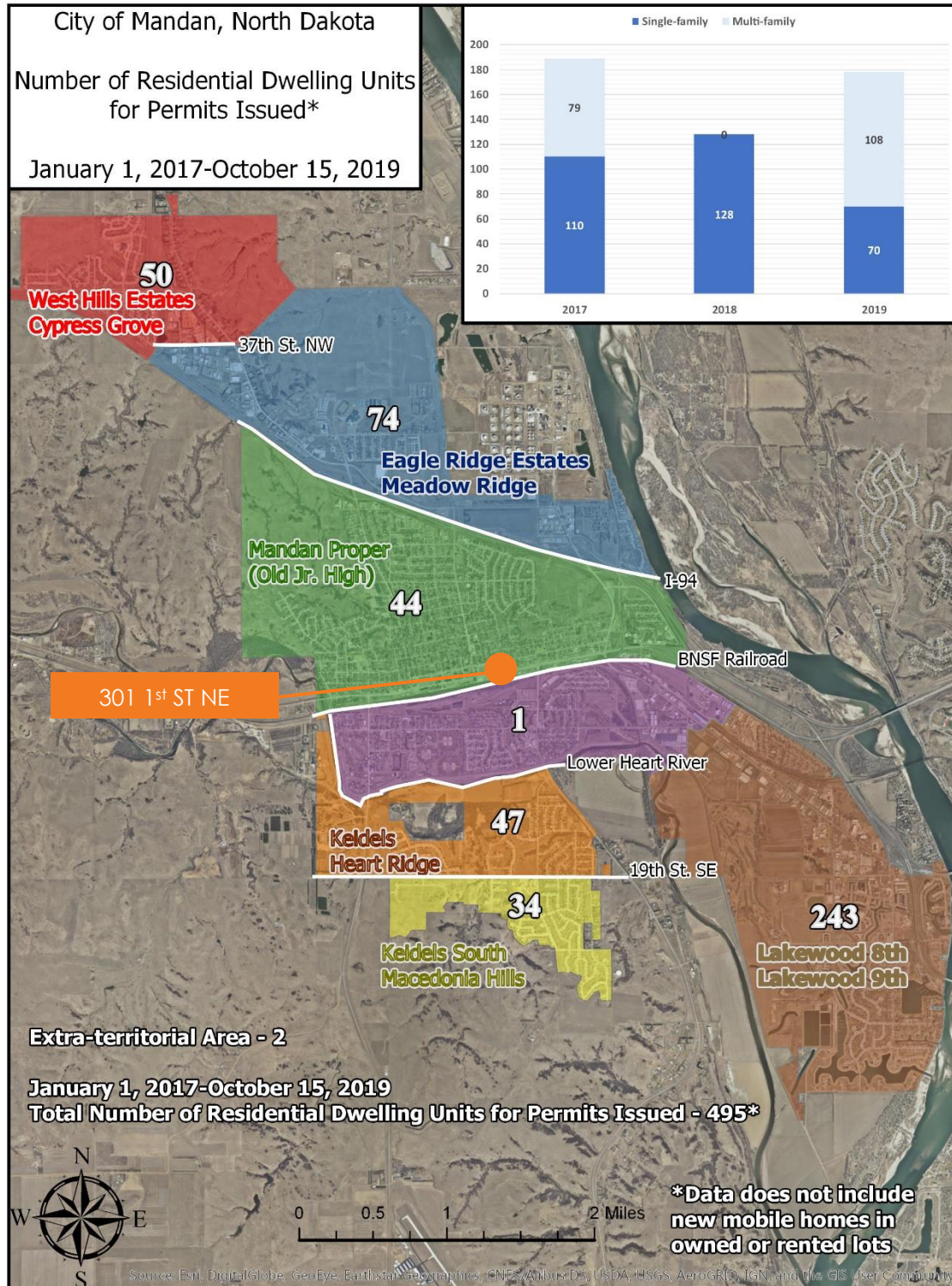


Suite 303



Suite 303





# BUILDING RELATIONSHIPS. BUILDING THE COMMUNITY.™



**KYLE HOLWAGNER, CCIM,  
SIOR**

Partner | Broker Associate

701.400.5373

kyle@thecragroup.com



**KRISTYN STECKLER,  
COMMERCIAL REALTOR®**

Partner | Broker

701.527.0138

kristyn@thecragroup.com

## STAY IN TOUCH



@THECRAGROUP



@THECRAGROUP



THE CRA GROUP

# THECRAGROUP.com

THE CRA GROUP | 216 N 2ND ST | BISMARCK, ND 58501

Although information has been obtained from sources deemed reliable, neither Owner nor CRA makes any guarantees, warranties, or representations, express or implied, as to the completeness or accuracy as to the information contained herein. You should conduct a careful, independent investigation of the property and verify all information. Any reliance on this information is solely at your own risk. The Property may be withdrawn without notice. Neither Owner nor CRA accepts any liability for any loss or damage suffered by any party resulting from reliance on this information. Photos, logos, and other images herein are the property of their respective owners. Use of these images without the express written consent of the owner is prohibited.





