

LAND FOR SALE

4518 MEMORIAL HIGHWAY | MANDAN, ND





OFFERING SUMMARY

Sale Price:	\$1,603,340
Lot Size:	80,167 SF
Zoning:	CC - Commercial/Light Industrial Transition

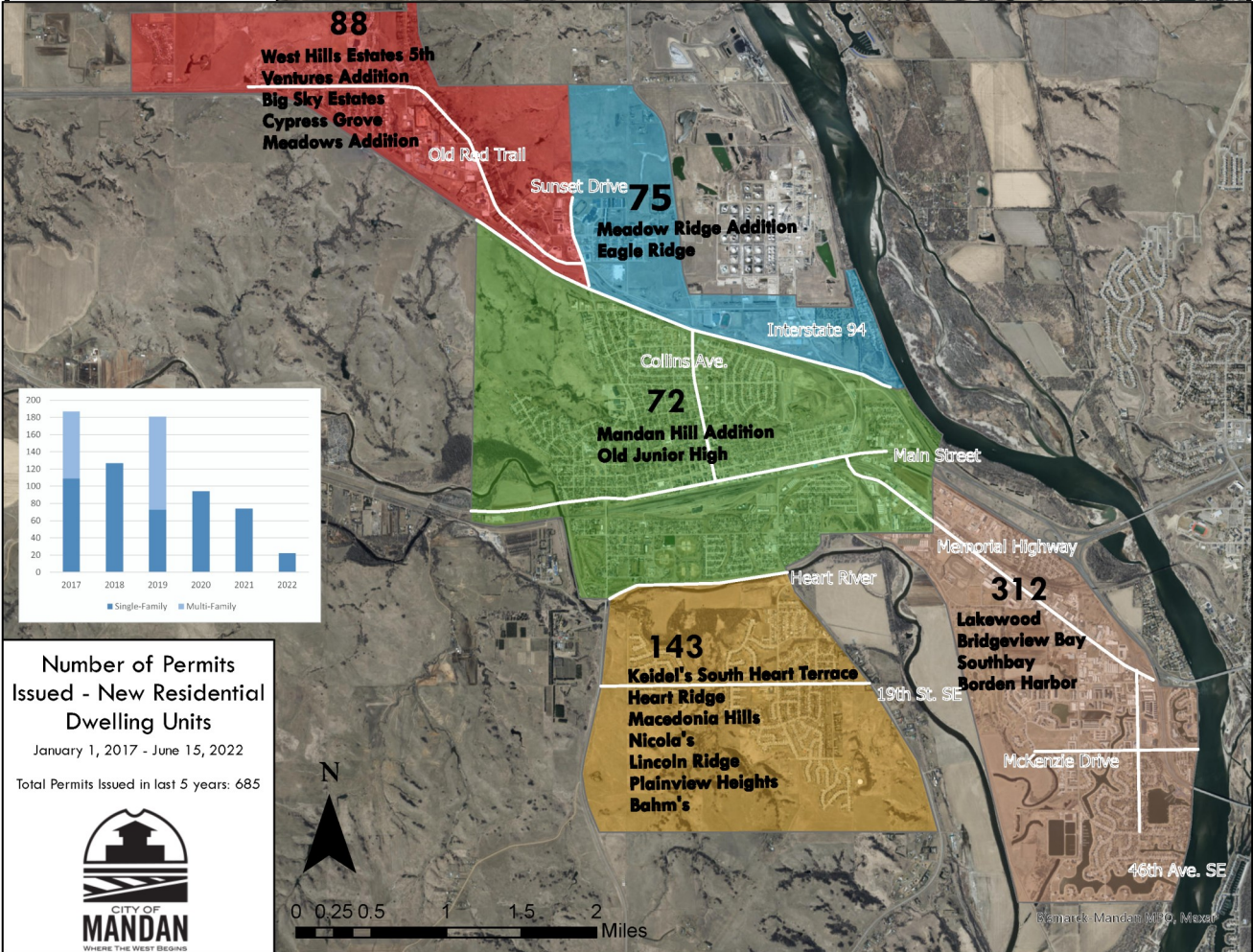
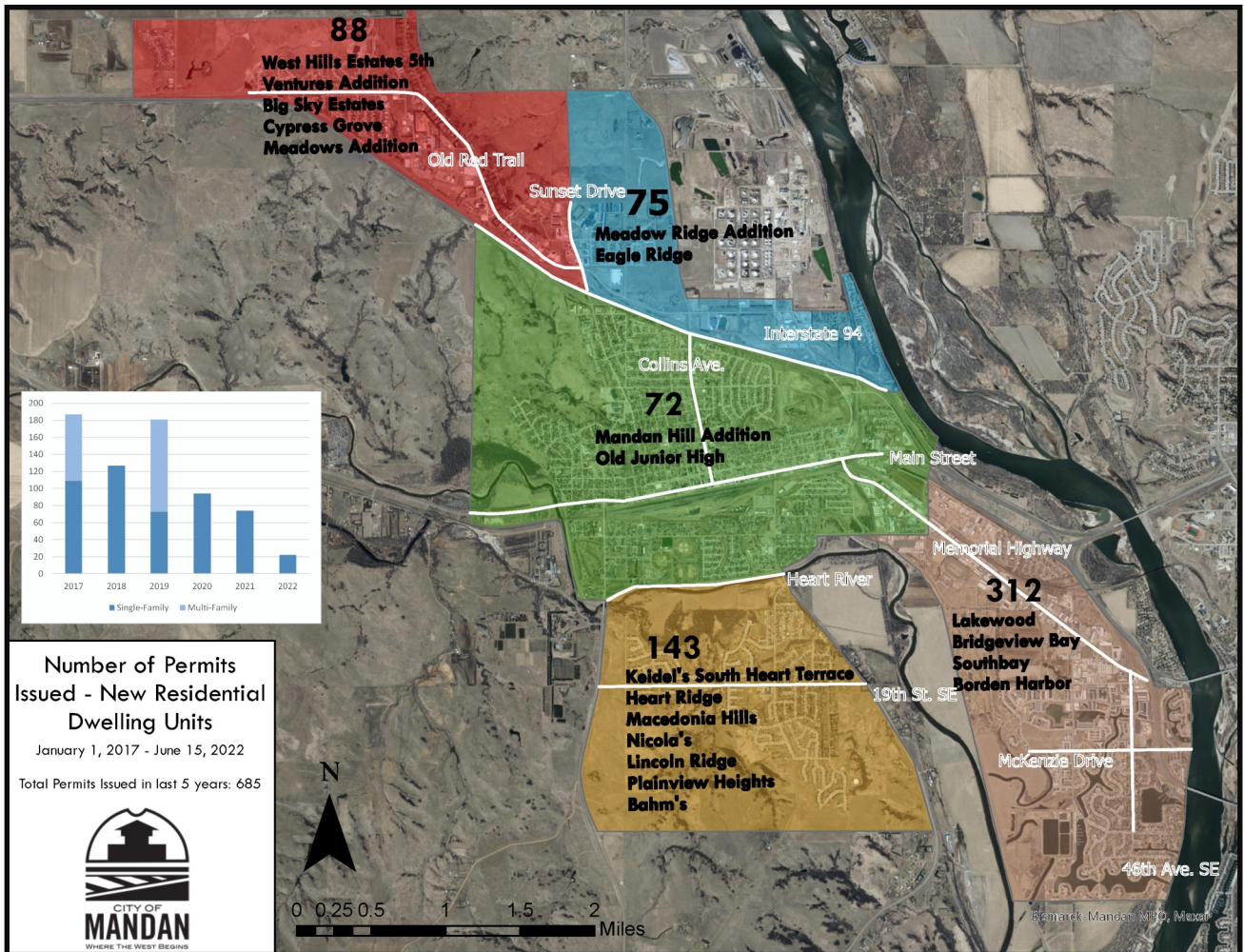
PROPERTY OVERVIEW

Excellent lot on Memorial Highway. Located next to Memorial Square, just off of I-94. This location is within a 10 minute drive time for 77% of the population of the Bismarck-Mandan area.

PROPERTY HIGHLIGHTS

- High traffic
- Great visibility
- Easy access to I-94
- Next to Memorial Square
- PID#: 65-5097300
- Taxes (2022): \$3,421.26





BUILDING RELATIONSHIPS. BUILDING THE COMMUNITY.™



**KYLE HOLWAGNER, CCIM,
SIOR**

Partner | Broker Associate

701.400.5373

kyle@thecragroup.com



**KRISTYN STECKLER,
COMMERCIAL REALTOR®**

Partner | Broker

701.527.0138

kristyn@thecragroup.com

STAY IN TOUCH



@THECRAGROUP



@THECRAGROUP



THE CRA GROUP

THECRAGROUP.com

THE CRA GROUP | 216 N 2ND ST | BISMARCK, ND 58501

Although information has been obtained from sources deemed reliable, neither Owner nor CRA makes any guarantees, warranties, or representations, express or implied, as to the completeness or accuracy as to the information contained herein. You should conduct a careful, independent investigation of the property and verify all information. Any reliance on this information is solely at your own risk. The Property may be withdrawn without notice. Neither Owner nor CRA accepts any liability for any loss or damage suffered by any party resulting from reliance on this information. Photos, logos, and other images herein are the property of their respective owners. Use of these images without the express written consent of the owner is prohibited.