

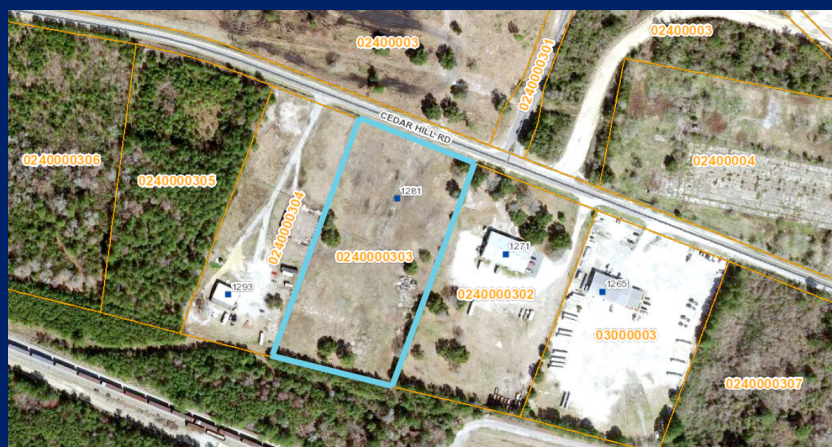


FOR SALE

\$385,000

Located just under a mile from the new I-140 interchange and Cedar Hill Road intersection.

CBCSUNCOAST.COM



CONTACT

Mason Watkins
704 661 4077
mason.watkins@cbcsuncoast.com

**COLDWELL BANKER COMMERCIAL
SUN COAST PARTNERS**
1430 Commonwealth Drive, Suite 102, Wilmington, NC 28403
910.350.1200



1281 Cedar Hill Road, Navassa, NC 28451





SALE

1281 CEDAR HILL ROAD LAND PARCEL

1281 Cedar Hill Road, Navassa, NC 28451



CBCSUNCOAST.COM

Don Harley
910 262 3148
don.harley@cbcsuncoast.com

Mason Watkins
704 661 4077
mason.watkins@cbcsuncoast.com



COLDWELL
BANKER
COMMERCIAL

SUN COAST
PARTNERS



SALE

1281 CEDAR HILL ROAD LAND PARCEL

1281 Cedar Hill Road, Navassa, NC 28451



CBCSUNCOAST.COM

Don Harley
910 262 3148
don.harley@cbcsuncoast.com

Mason Watkins
704 661 4077
mason.watkins@cbcsuncoast.com



**COLDWELL
BANKER
COMMERCIAL**

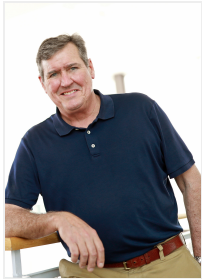
SUN COAST
PARTNERS



SALE

1281 CEDAR HILL ROAD LAND PARCEL

1281 Cedar Hill Road, Navassa, NC 28451



DON HARLEY

Commercial Broker

910.262.3148

don.harley@cbcsuncoast.com

NC #158891



MASON WATKINS

Commercial Broker

704.661.4077

mason.watkins@cbcsuncoast.com

NC #305575

CBCSUNCOAST.COM

Don Harley
910 262 3148
don.harley@cbcsuncoast.com

Mason Watkins
704 661 4077
mason.watkins@cbcsuncoast.com



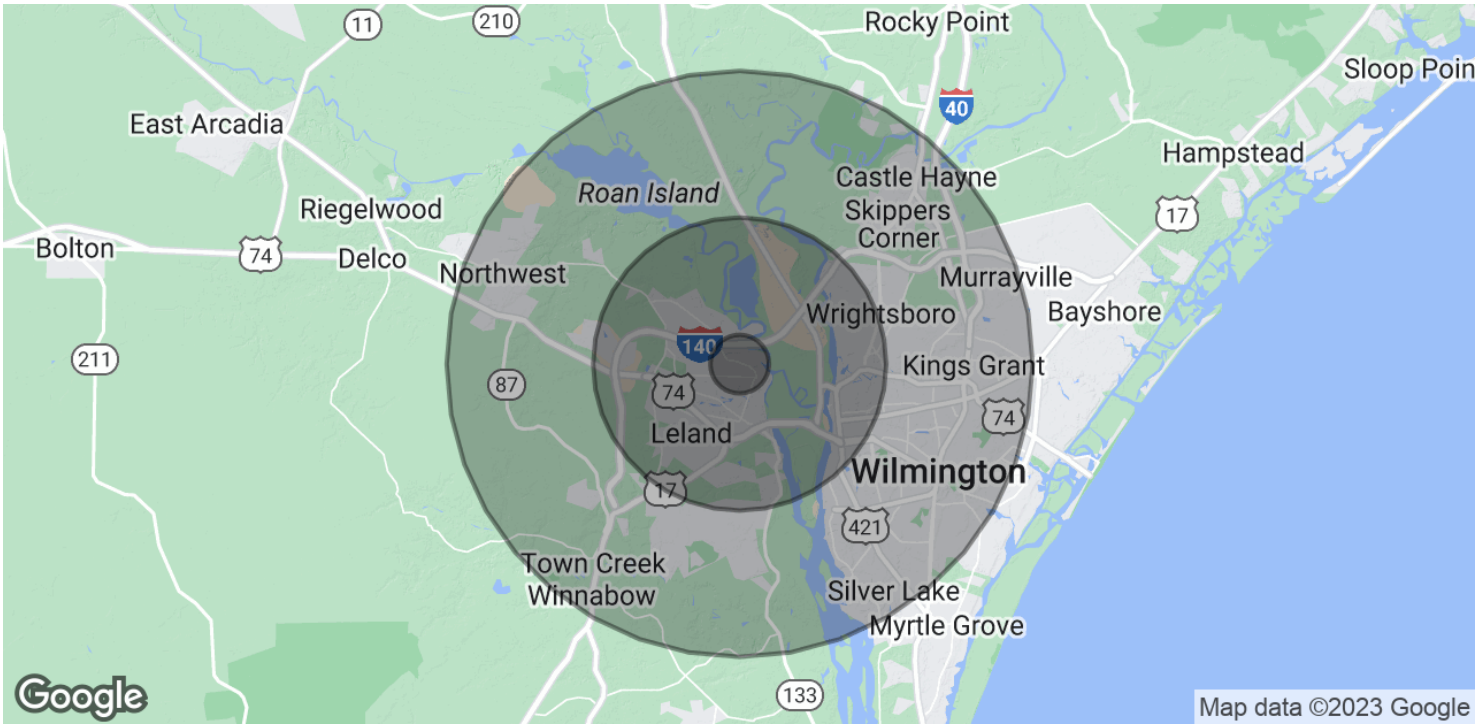
**COLDWELL
BANKER
COMMERCIAL**

**SUN COAST
PARTNERS**



1281 CEDAR HILL ROAD LAND PARCEL

1281 Cedar Hill Road, Navassa, NC 28451



POPULATION	1 MILE	5 MILES	10 MILES
Total Population	926	26,600	140,691
Average age	39.6	36.1	34.9
Average age (Male)	36.7	35.5	34.1
Average age (Female)	45.5	38.0	35.9
HOUSEHOLDS & INCOME	1 MILE	5 MILES	10 MILES
Total households	390	11,360	60,117
# of persons per HH	2.4	2.3	2.3
Average HH income	\$50,103	\$53,247	\$51,730
Average house value	\$167,658	\$176,905	\$188,460

* Demographic data derived from 2020 ACS - US Census

CBCSUNCOAST.COM

Don Harley
910 262 3148
don.harley@cbcsuncoast.com

Mason Watkins
704 661 4077
mason.watkins@cbcsuncoast.com