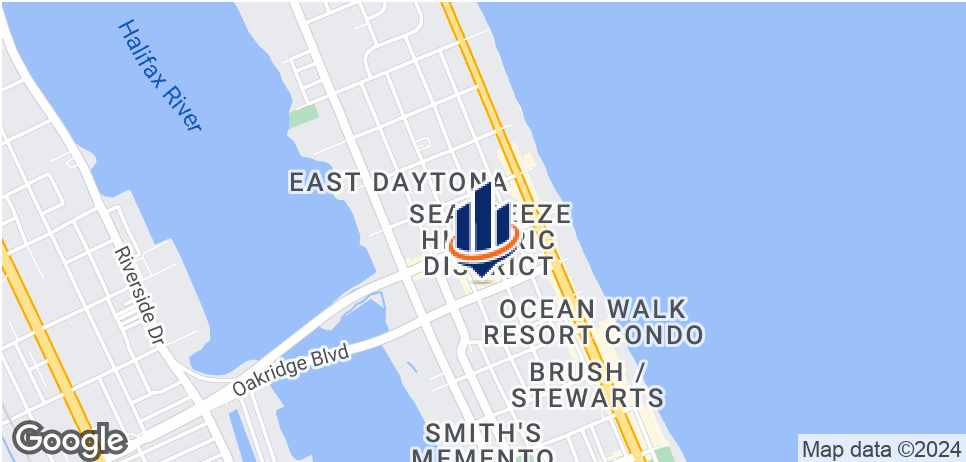


# PROFESSIONAL OFFICE SUITES-BEACHSIDE DAYTONA BEACH

500 N OLEANDER AVE  
DAYTONA BEACH, FL 32118

Carl W. Lentz IV, MBA, CCIM  
Managing Director  
O: 386.566.3726  
[carl.lentz@svn.com](mailto:carl.lentz@svn.com)

# Property Summary



## OFFERING SUMMARY

Available SF:	
Lease Rate:	Negotiable
Lot Size:	0.49 Acres
Year Built:	1990
Building Size:	4,411 SF
Renovated:	2015
Zoning:	RP Residential / Professional

## PROPERTY OVERVIEW

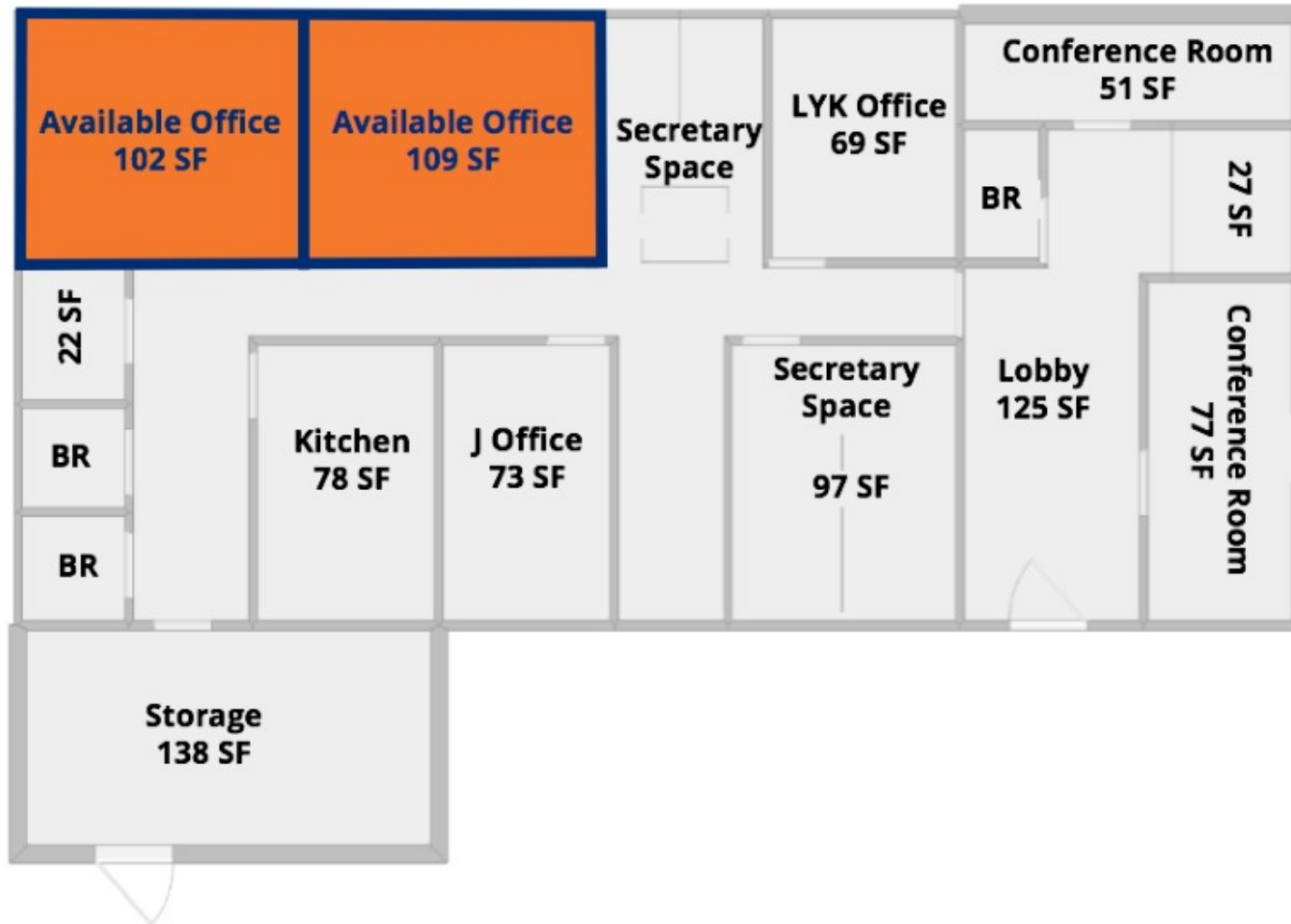
Available for lease are 2 Executive Office Suites on the beachside in Daytona Beach. Ideal tenants will be attorneys, CPAs or other business professionals interested in sharing office space without having the hassle of maintaining a property or common areas. Tenants will have access to: Private Office, Shared Waiting Room, Shared Conference Room and a Break Room. All Utilities are included in the monthly pricing of \$1400 for each available office.



# Interior Photos

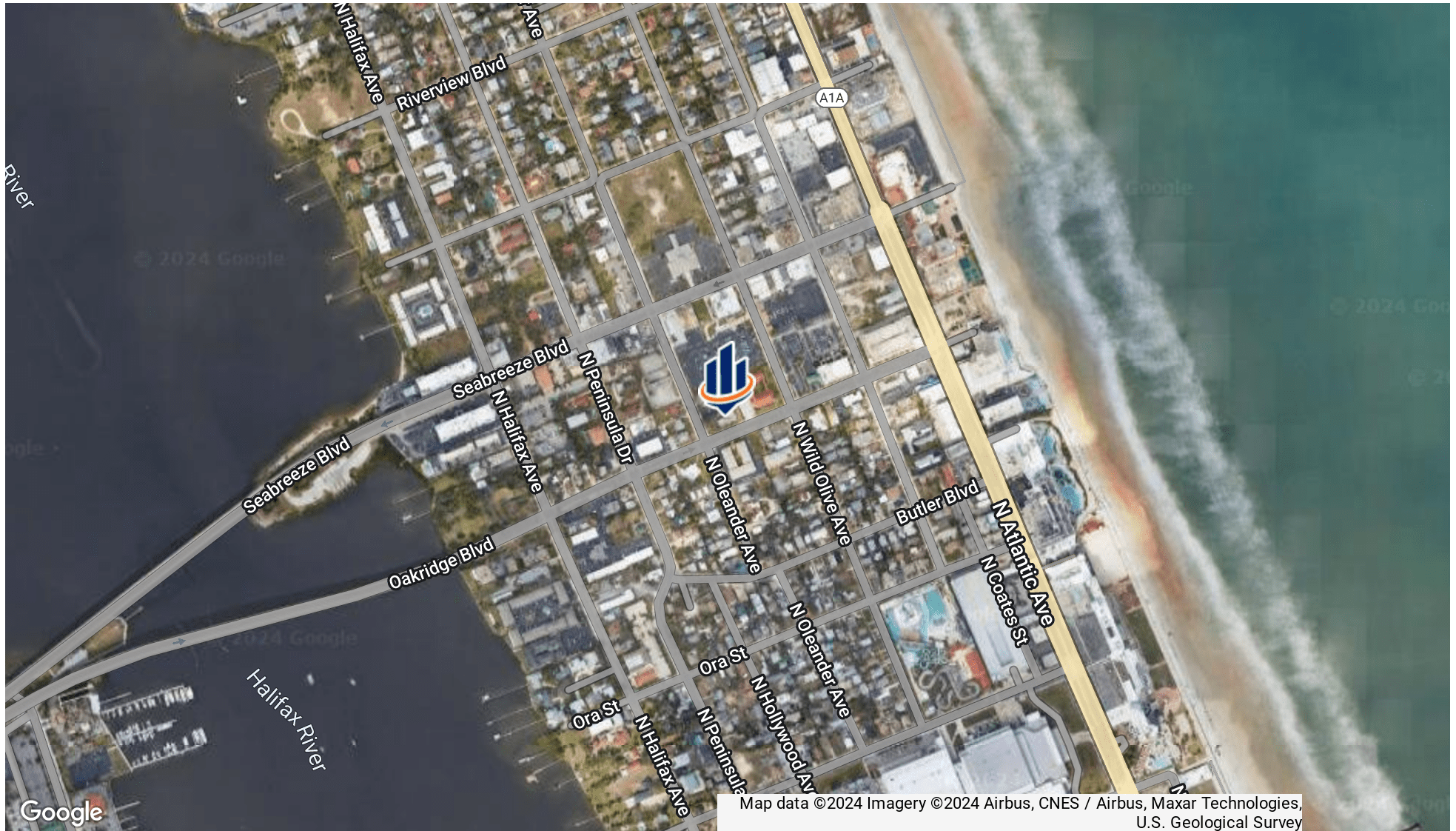


# Floor Plan

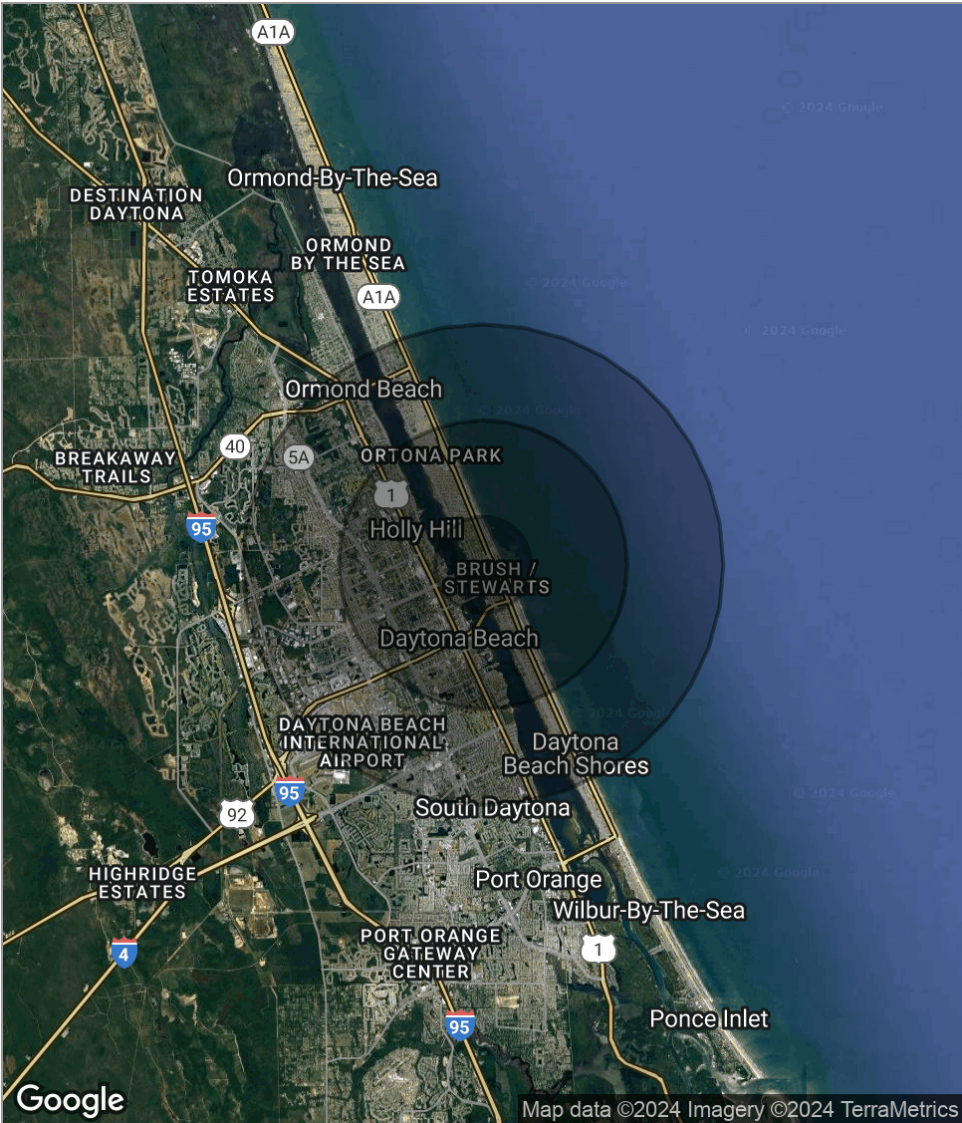




# Location Maps



# Demographics Map



POPULATION	1 MILE	3 MILES	5 MILES
Total population	3,934	41,877	98,650
Median age	47.4	39.2	40.4
Median age (Male)	46.2	37.8	38.9
Median age (Female)	48.7	40.3	42.2
HOUSEHOLDS & INCOME	1 MILE	3 MILES	5 MILES
Total households	2,206	17,878	40,883
# of persons per HH	1.8	2.3	2.4
Average HH income	\$38,232	\$40,853	\$43,735
Average house value	\$252,900	\$173,878	\$176,225

\* Demographic data derived from 2020 ACS - US Census