

PRIME CARMEL OFFICE SPACE



TCN
WORLDWIDE
REAL ESTATE SERVICES

695 PRO MED LANE, CARMEL, IN 46032

FOR LEASE



PROPERTY DESCRIPTION

READY FOR IMMEDIATE OCCUPANCY! Welcome into a beautiful lobby area designed for clients and guests. Building is in a prime location in Carmel. Access to wooded trails- walk to work or lunch! Great work/life balance. Creative space promotes positive energy. High speed internet throughout. This building has location, access, and thoughtful design for ease of use.

PROPERTY HIGHLIGHTS

- 2,000 SF with generous T.I. available for long-term tenant
- Lower level suite has large windows to let in tons of natural light
- Direct access to back patio that overlooks the water - perfect for outdoor lunch breaks
- Great opportunity for extra storage
- Trail access that connects to Monon
- High speed internet
- Impressive lobby featuring wood & tempered glass design
- Prime location - quick access to Clay Terrace, Downtown Carmel Arts District

OFFERING SUMMARY

Lease Rate:	Negotiable
-------------	------------

Available SF:	
---------------	--

Lot Size:	2 Acres
-----------	---------

Building Size:	18,138 SF
----------------	-----------

MATT FERGUSON

317.454.7171

mferguson@premiercres.com

PREMIER COMMERCIAL | TCN WORLDWIDE 9785 Crosspoint Blvd., Ste. 118 | Indianapolis, IN 46256 | 317.454.7171 | www.premiercres.com

The information contained herein has been obtained from sources we deem reliable. Although we have no reason to doubt its accuracy, we do not guarantee the information is correct or complete. Marketing materials & documents alike may only be reproduced in their entirety, without modification or deletion. Photos are the property of their respective Owners, & use of these without the written consent of said Owner is prohibited. © 2023. Premier Commercial Real Estate Services, LLC

PRIME CARMEL OFFICE SPACE

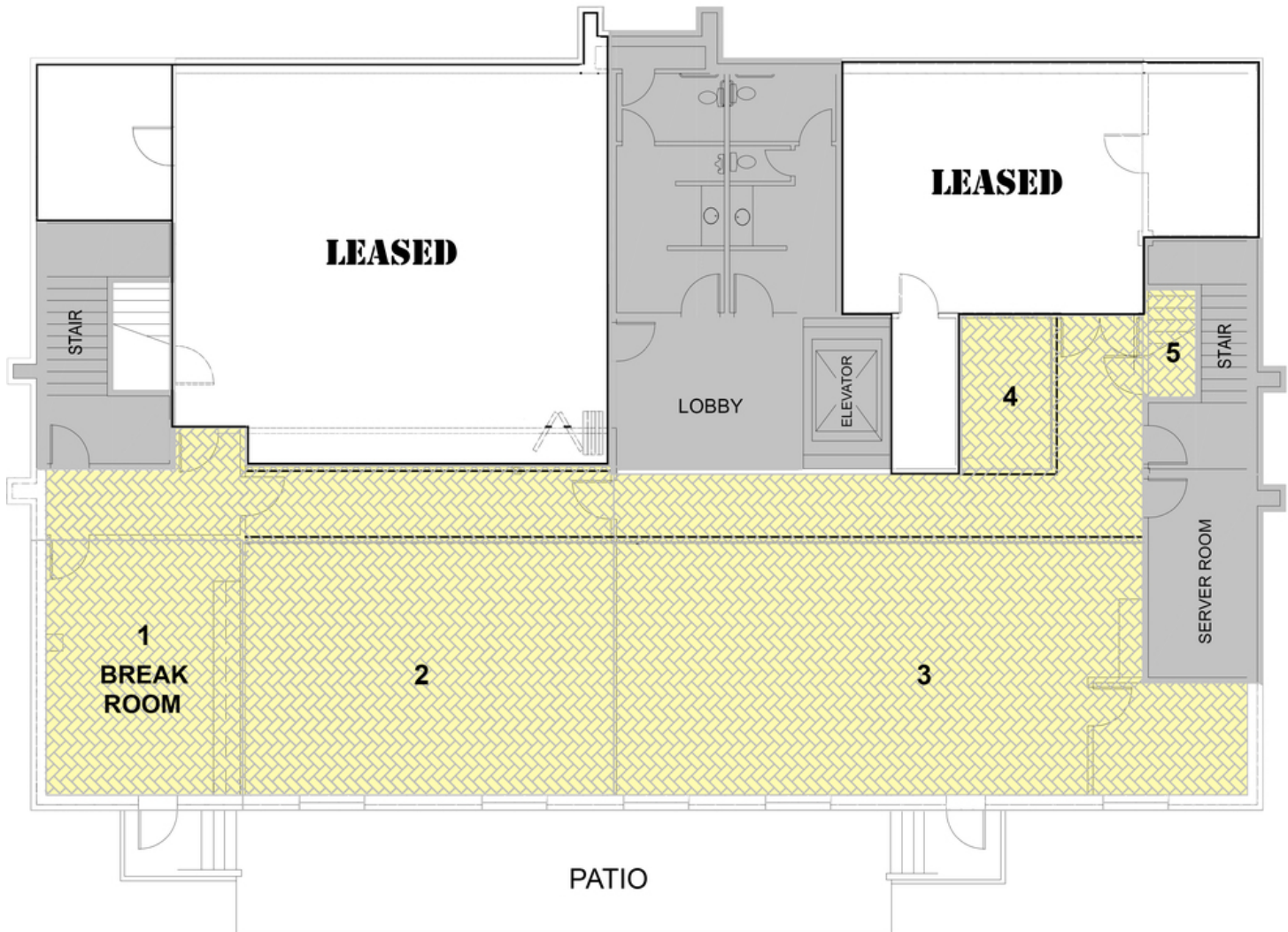


TCN
WORLDWIDE
REAL ESTATE SERVICES

695 PRO MED LANE, CARMEL, IN 46032

FOR LEASE

(Not to Scale)



MATT FERGUSON

317.454.7171

mferguson@premiercres.com

PREMIER COMMERCIAL | TCN WORLDWIDE 9785 Crosspoint Blvd., Ste. 118 | Indianapolis, IN 46256 | 317.454.7171 | www.premiercres.com

The information contained herein has been obtained from sources we deem reliable. Although we have no reason to doubt its accuracy, we do not guarantee the information is correct or complete. Marketing materials & documents alike may only be reproduced in their entirety, without modification or deletion. Photos are the property of their respective Owners, & use of these without the written consent of said Owner is prohibited. © 2023. Premier Commercial Real Estate Services, LLC

PRIME CARMEL OFFICE SPACE

**PREMIER
COMMERCIAL**
REAL ESTATE SERVICES



TCN
WORLDWIDE
REAL ESTATE SERVICES

695 PRO MED LANE, CARMEL, IN 46032

FOR LEASE



MATT FERGUSON

317.454.7171

mferguson@premiercres.com

PREMIER COMMERCIAL | TCN WORLDWIDE 9785 Crosspoint Blvd., Ste. 118 | Indianapolis, IN 46256 | 317.454.7171 | www.premiercres.com

The information contained herein has been obtained from sources we deem reliable. Although we have no reason to doubt its accuracy, we do not guarantee the information is correct or complete. Marketing materials & documents alike may only be reproduced in their entirety, without modification or deletion. Photos are the property of their respective Owners, & use of these without the written consent of said Owner is prohibited. © 2023. Premier Commercial Real Estate Services, LLC

PRIME CARMEL OFFICE SPACE

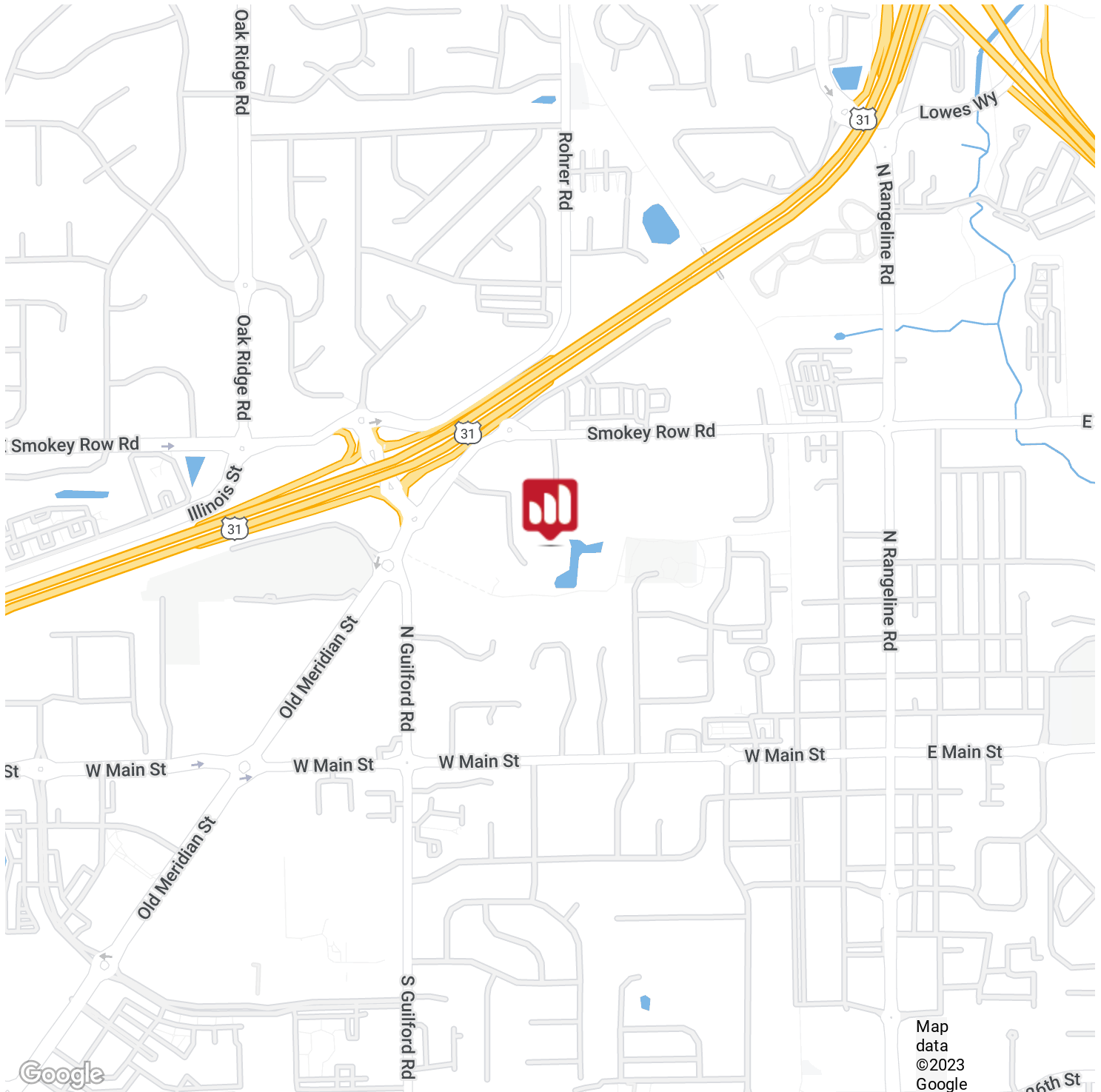
**PREMIER
COMMERCIAL**
REAL ESTATE SERVICES



TCN
WORLDWIDE
REAL ESTATE SERVICES

695 PRO MED LANE, CARMEL, IN 46032

FOR LEASE



MATT FERGUSON

317.454.7171

mferguson@premiercres.com

PREMIER COMMERCIAL | TCN WORLDWIDE 9785 Crosspoint Blvd., Ste. 118 | Indianapolis, IN 46256 | 317.454.7171 | www.premiercres.com

The information contained herein has been obtained from sources we deem reliable. Although we have no reason to doubt its accuracy, we do not guarantee the information is correct or complete. Marketing materials & documents alike may only be reproduced in their entirety, without modification or deletion. Photos are the property of their respective Owners, & use of these without the written consent of said Owner is prohibited. © 2023. Premier Commercial Real Estate Services, LLC