

25020 SW Garden Acres Rd , Sherwood, OR 97140

FOR SALE



FOR SALE INDUSTRIAL LAND IN WILSONVILLE

OFFERING SUMMARY

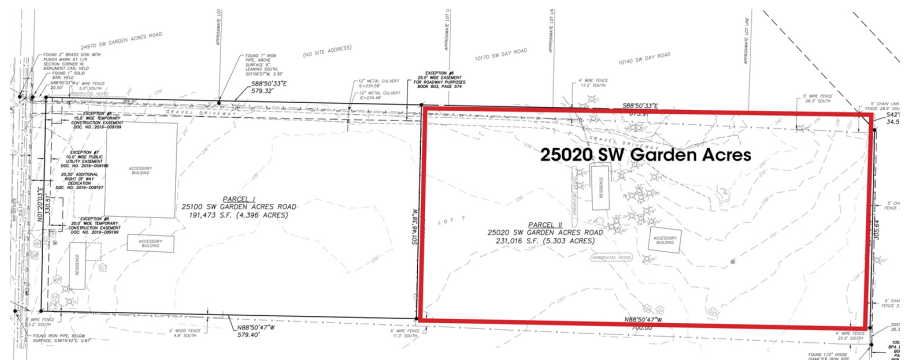
Sale Price:	\$2,539,000
Lot Size:	5.3 Acres
Zoning:	FD 20, Washington County
Utilities:	All available in Garden Acres Rd

PROPERTY OVERVIEW

All utilities available in Garden Acres Rd. House and accessory building improvements. Very level topography. Approximately 700' X 300'

LOCATION OVERVIEW

The property offers excellent freeway exit at the North Wilsonville exit/entrance of I-5. Garden Acres Rd is being improved as part of an Urban Renewal District in Wilsonville slated to be completed next year. **This property can be combined with the adjacent parcel of 4.4 acres to make a contiguous nearly 10 acres of industrial property.**



Stu Peterson, SIOR
503.972.7288
stu@macadamforbes.com
Licensed in OR & WA

All of the information contained herein was obtained either from the owner or other parties we consider reliable. We have no reason to doubt its accuracy, however we do not guarantee it.

MACADAMFORBES.COM | 503.227.2500

FOR SALE

25020 SW Garden Acres Rd , Sherwood, OR 97140



Stu Peterson, SIOR
503.972.7288
stu@macadamforbes.com
Licensed in OR & WA

All of the information contained herein was obtained either from the owner or other parties we consider reliable. We have no reason to doubt its accuracy, however we do not guarantee it.

MACADAMFORBES.COM | 503.227.2500