



## OFFERING SUMMARY

### Available SF:

**Warehouse:** 2,000 SF

**Rate:** \$1.08/ SF NNN

**NNN's:** \$0.51/SF

**Building Size:** 16,992 SF

**Remaning Term:** 4/30/24

**Lease Type:**

## PROPERTY OVERVIEW

The property consists of approximately 2,000 SF warehouse, with the balance being office space. The warehouse is separated into two bays and features two grade doors with additional man doors. The office portion features a good blend of open space with perimeter private offices. There are currently 7 private offices/storage rooms.

## LOCATION OVERVIEW

Flex Office Park located in the Lake Oswego Executive Park. The property is in close proximity to Lower Boones Ferry Rd and I-5.



**Seth Platsman**

503.416.0091

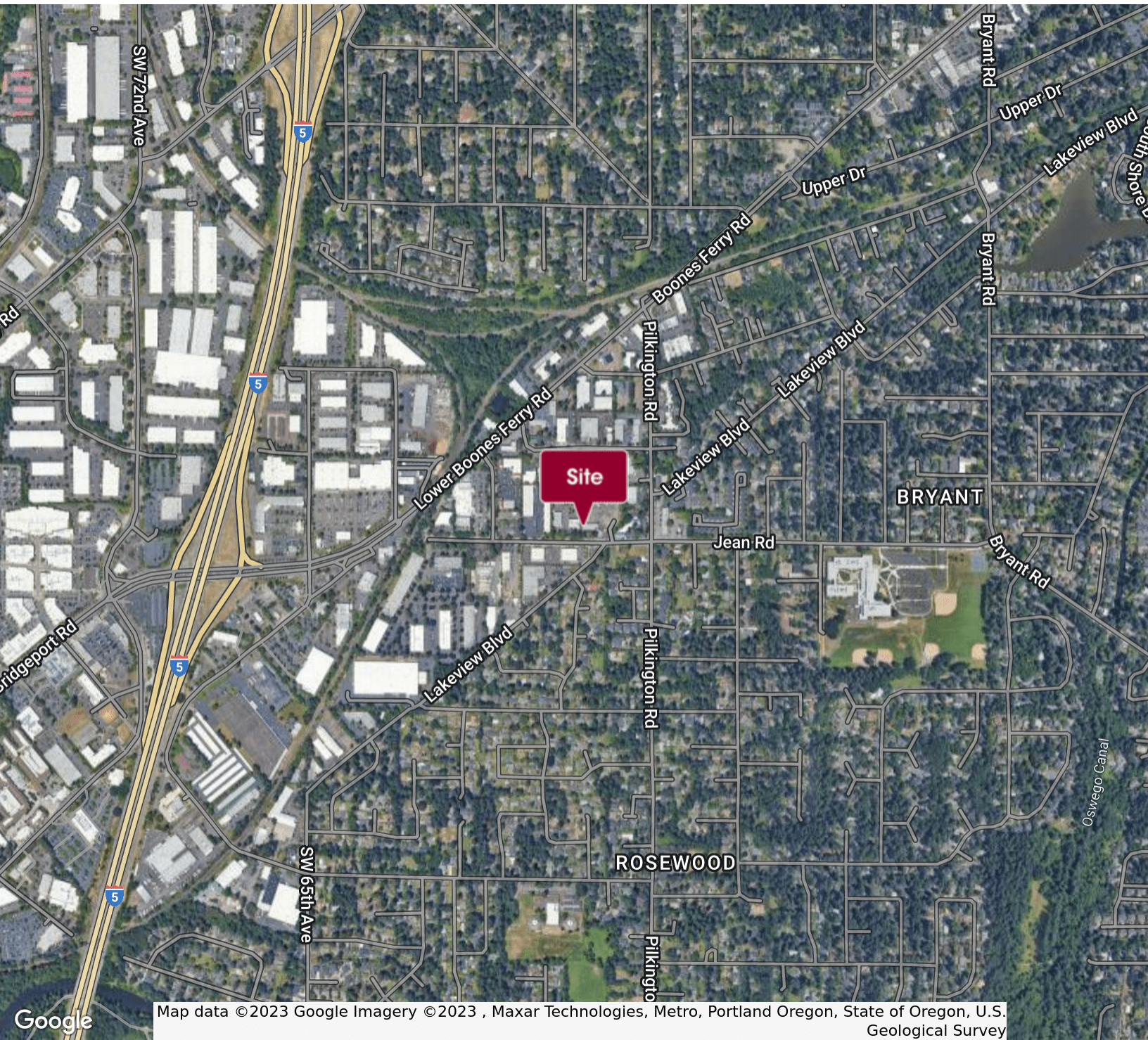
seth@macadamforbes.com

Licensed in OR



FOR SUBLEASE

5775 Jean Rd Lake Oswego, OR 97035



**Seth Platsman**  
503.416.0091  
seth@macadamforbes.com  
Licensed in OR

All of the information contained herein was obtained either from the owner or other parties we consider reliable. We have no reason to doubt its accuracy, however we do not guarantee it.

MACADAMFORBES.COM | 503.227.2500