

FOR LEASE

326 SAINT PAUL PL, BALTIMORE, MD 21202

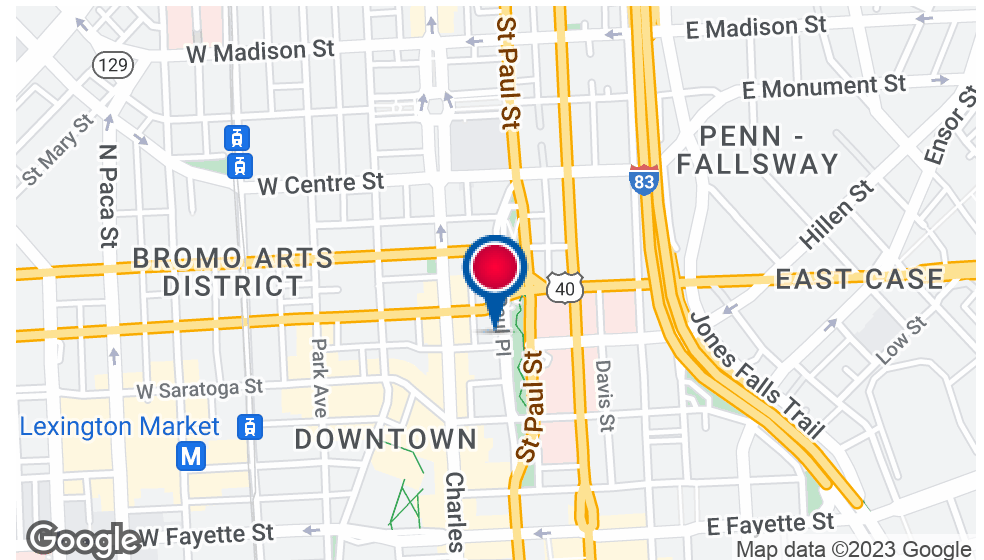
TD&A
TROUT DANIEL & ASSOCIATES

Executive Summary



PROPERTY HIGHLIGHTS

- Private, Secure Location Opposite Mercy Hospital
- Office Suites of 85 - 3,507 sf
- Asking Rent: \$12.00 - \$15.00 PSF Full Service
- Full Floors Available
- Top Floor Offers Furnished Co-Working Space
- Recently Renovated (2019)
- Retail services nearby on Charles Street



Leo McDermott

202.744.6910

lmcdermott@troutdaniel.com

The information contained in this marketing brochure has been obtained from sources we believe to be reliable; however, Trout Daniel & Associates LLC has not verified, and will not verify any of the information contained herein, nor has Trout Daniel & Associates LLC conducted any investigation regarding these matters and makes no warranty or representation whatsoever regarding the accuracy or completeness of the information provided. An agent indicated by an asterisk (*) has a direct or indirect ownership interest in this property.

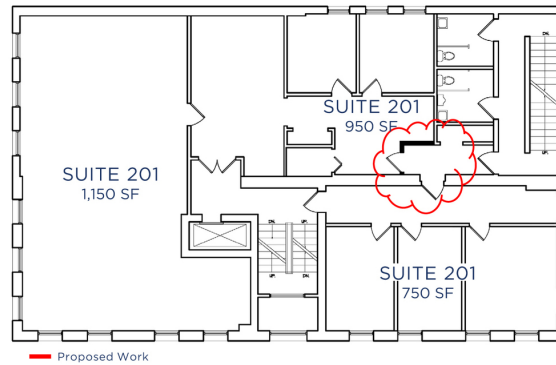
BALTIMORE, MD 21202

326 SAINT PAUL PL

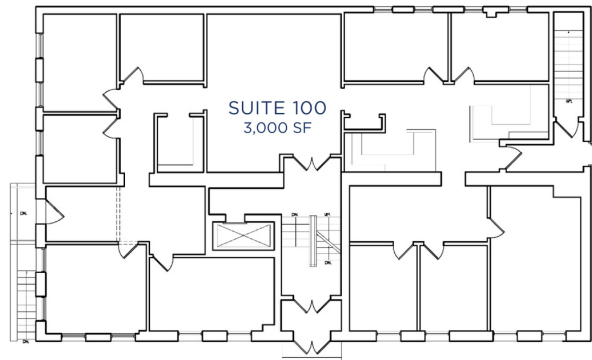


Floor Plans

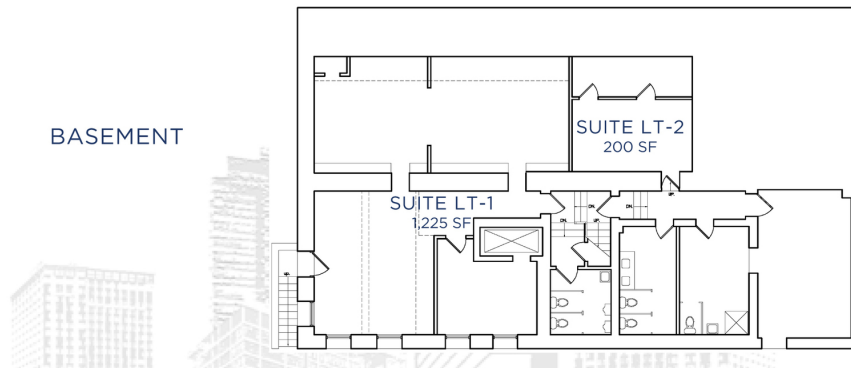
2ND FLOOR



1st FLOOR



BASEMENT



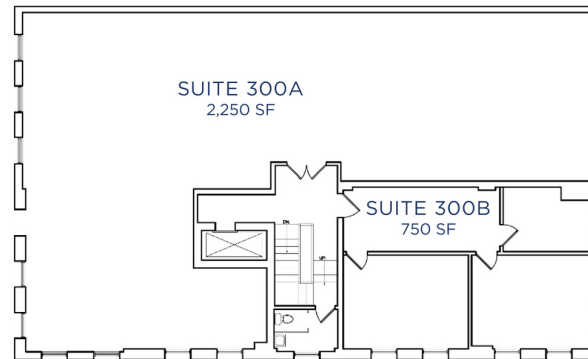
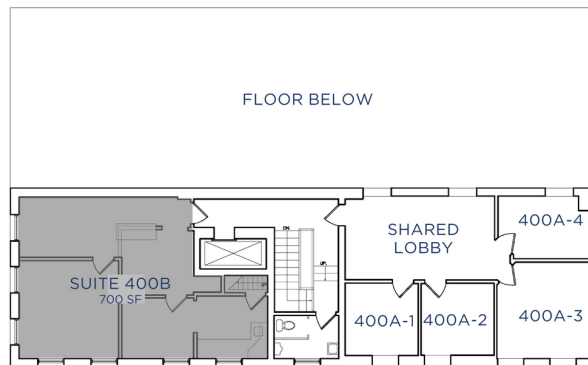
Leo McDermott

202.744.6910

lmcdermott@troutdaniel.com

The information contained in this marketing brochure has been obtained from sources we believe to be reliable; however, Trout Daniel & Associates LLC has not verified, and will not verify any of the information contained herein, nor has Trout Daniel & Associates LLC conducted any investigation regarding these matters and makes no warranty or representation whatsoever regarding the accuracy or completeness of the information provided. An agent indicated by an asterisk (*) has a direct or indirect ownership interest in this property.

Floor Plans

3RD FLOOR4TH FLOOR

■ OCCUPIED

ROOM NUMBER	RENT
400A-1	\$500
400A-2	\$500
400A-3	\$650
400A-4	\$300
400A-3 & 400A-4 (combined)	\$900

Leo McDermott

202.744.6910

lmcdermott@troutdaniel.com

The information contained in this marketing brochure has been obtained from sources we believe to be reliable; however, Trout Daniel & Associates LLC has not verified, and will not verify any of the information contained herein, nor has Trout Daniel & Associates LLC conducted any investigation regarding these matters and makes no warranty or representation whatsoever regarding the accuracy or completeness of the information provided. An agent indicated by an asterisk (*) has a direct or indirect ownership interest in this property.

BALTIMORE, MD 21202

326 SAINT PAUL PL



Additional Photos



Leo McDermott

202.744.6910

lmcdermott@troutdaniel.com

The information contained in this marketing brochure has been obtained from sources we believe to be reliable; however, Trout Daniel & Associates LLC has not verified, and will not verify any of the information contained herein, nor has Trout Daniel & Associates LLC conducted any investigation regarding these matters and makes no warranty or representation whatsoever regarding the accuracy or completeness of the information provided. An agent indicated by an asterisk (*) has a direct or indirect ownership interest in this property.

BALTIMORE, MD 21202

326 SAINT PAUL PL



Additional Photos



Leo McDermott

202.744.6910

lmcdermott@troutdaniel.com

The information contained in this marketing brochure has been obtained from sources we believe to be reliable; however, Trout Daniel & Associates LLC has not verified, and will not verify any of the information contained herein, nor has Trout Daniel & Associates LLC conducted any investigation regarding these matters and makes no warranty or representation whatsoever regarding the accuracy or completeness of the information provided. An agent indicated by an asterisk (*) has a direct or indirect ownership interest in this property.