

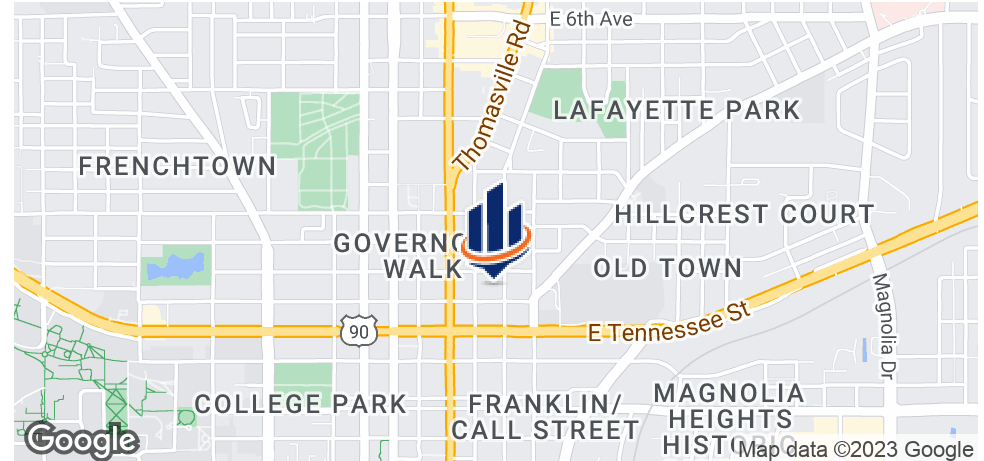


FL PODIATRIC MEDICAL ASSOCIATION

410 N. GADSDEN STREET
TALLAHASSEE, FL 32301

Matt Fleck
Associate Advisor
O: 850.508.5941
fleck@svn.com

Property Summary



OFFERING SUMMARY

Sale Price:	\$385,000
Lot Size:	0.34 Acres
Year Built:	1939
Building Size:	2,954 SF
Zoning:	SCD - Special Character District
Price / SF:	\$130.33

PROPERTY OVERVIEW

This 2,954 SF office building for sale includes a larger lot in the downtown corridor allowing on-site parking in both the front and the rear of the building. The building has three levels, a small basement with storage space, and 2 levels of office space with a combined 7 private offices, 3 bathrooms, Conference room, reception area, and a large break room/kitchen.

LOCATION OVERVIEW

Centrally located in Tallahassee on N. Gadsden Street, in close proximity to the heart of Downtown and the State Capital [0.7 Miles], also just South of Midtown, which is home to many business offices and restaurants. Gadsden street grants access to multiple of Tallahassee's major arterial roads making it easy to get anywhere in Tallahassee in a reasonable time.

PROPERTY HIGHLIGHTS

- Centrally located in Tallahassee, convenient to downtown and midtown.
- Large on-site parking area.
- 7 private offices, 3 bathrooms, conference room, reception area, and large break room.

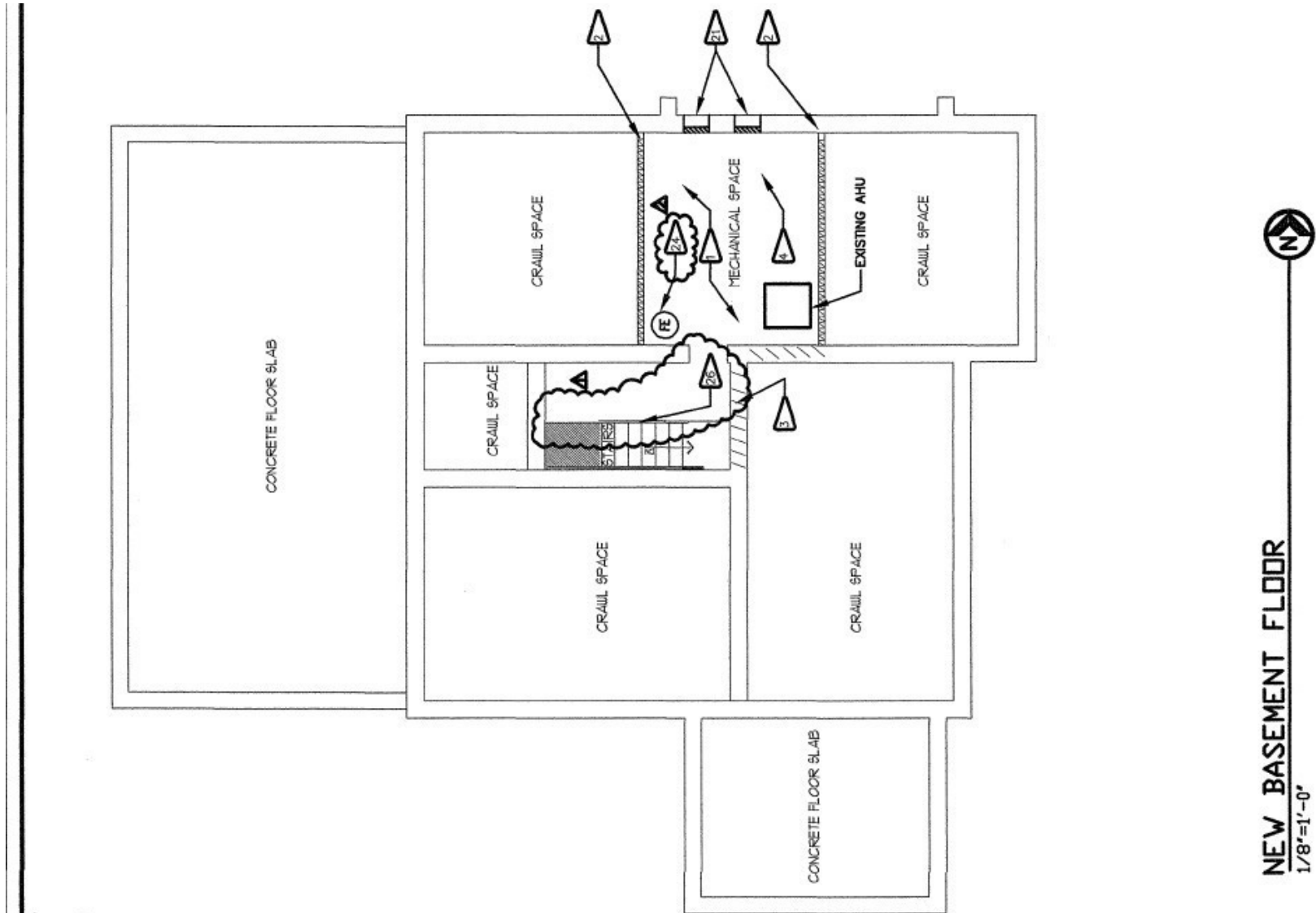
Exterior Photos



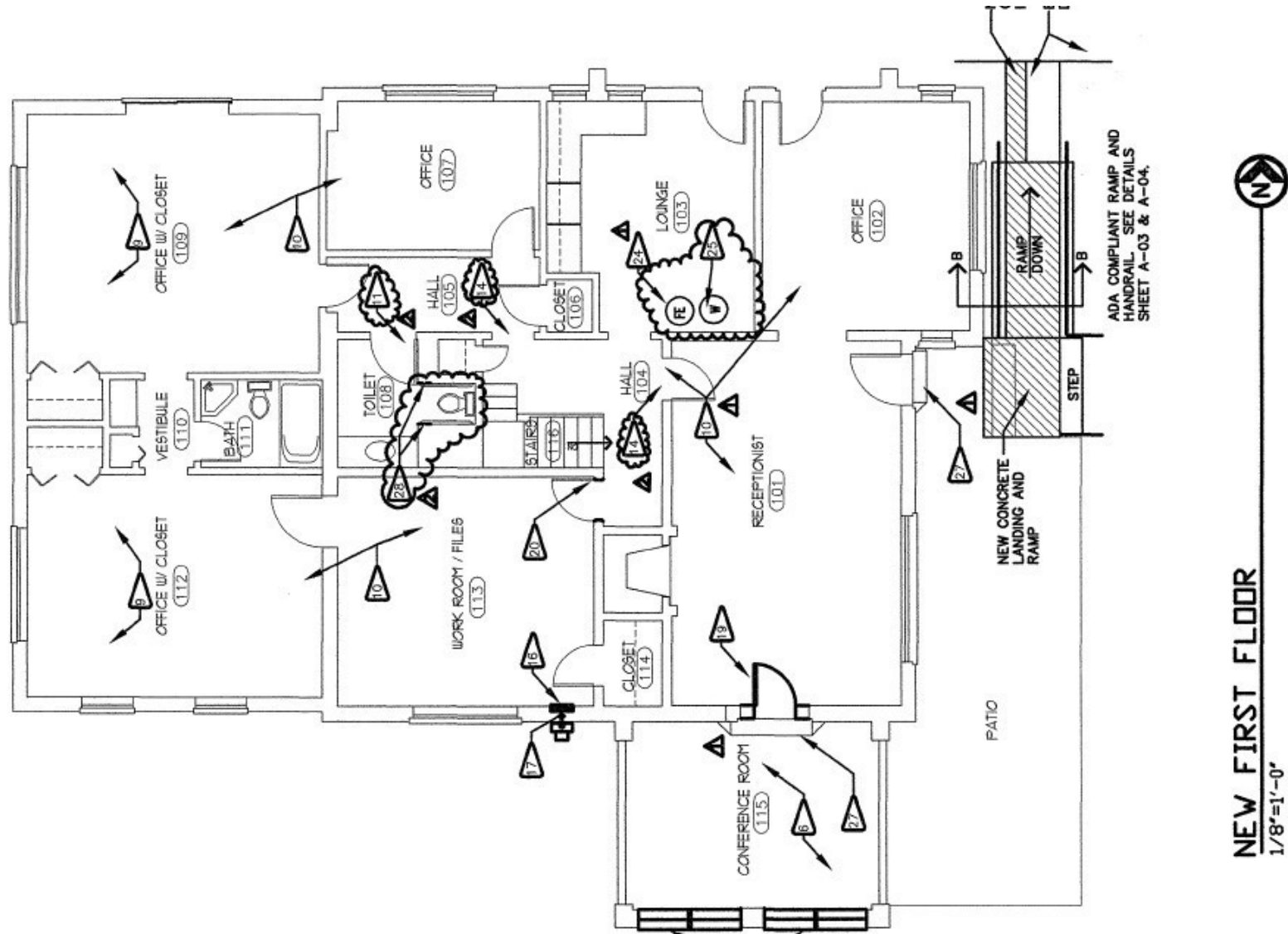
Interior Photos



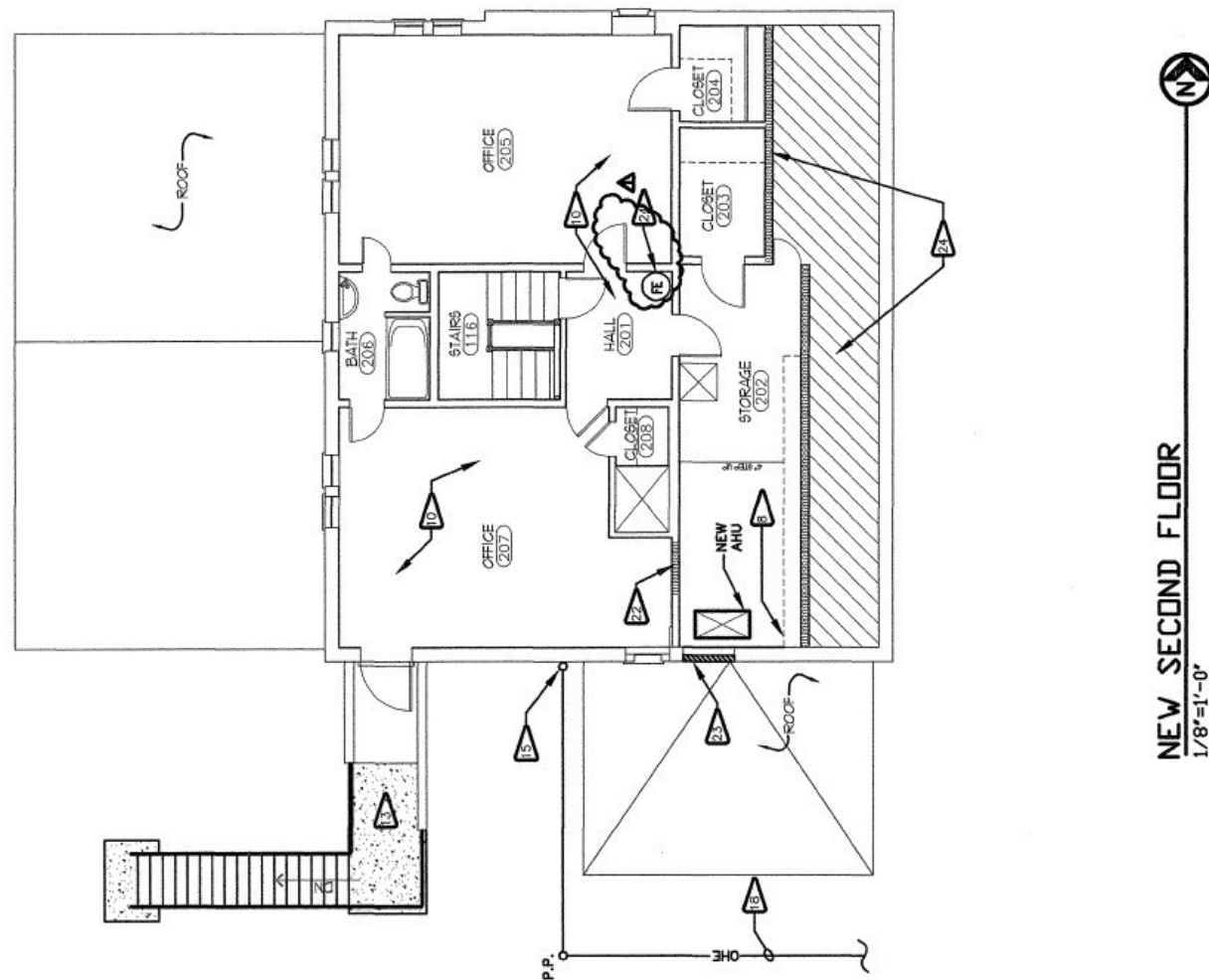
Basement



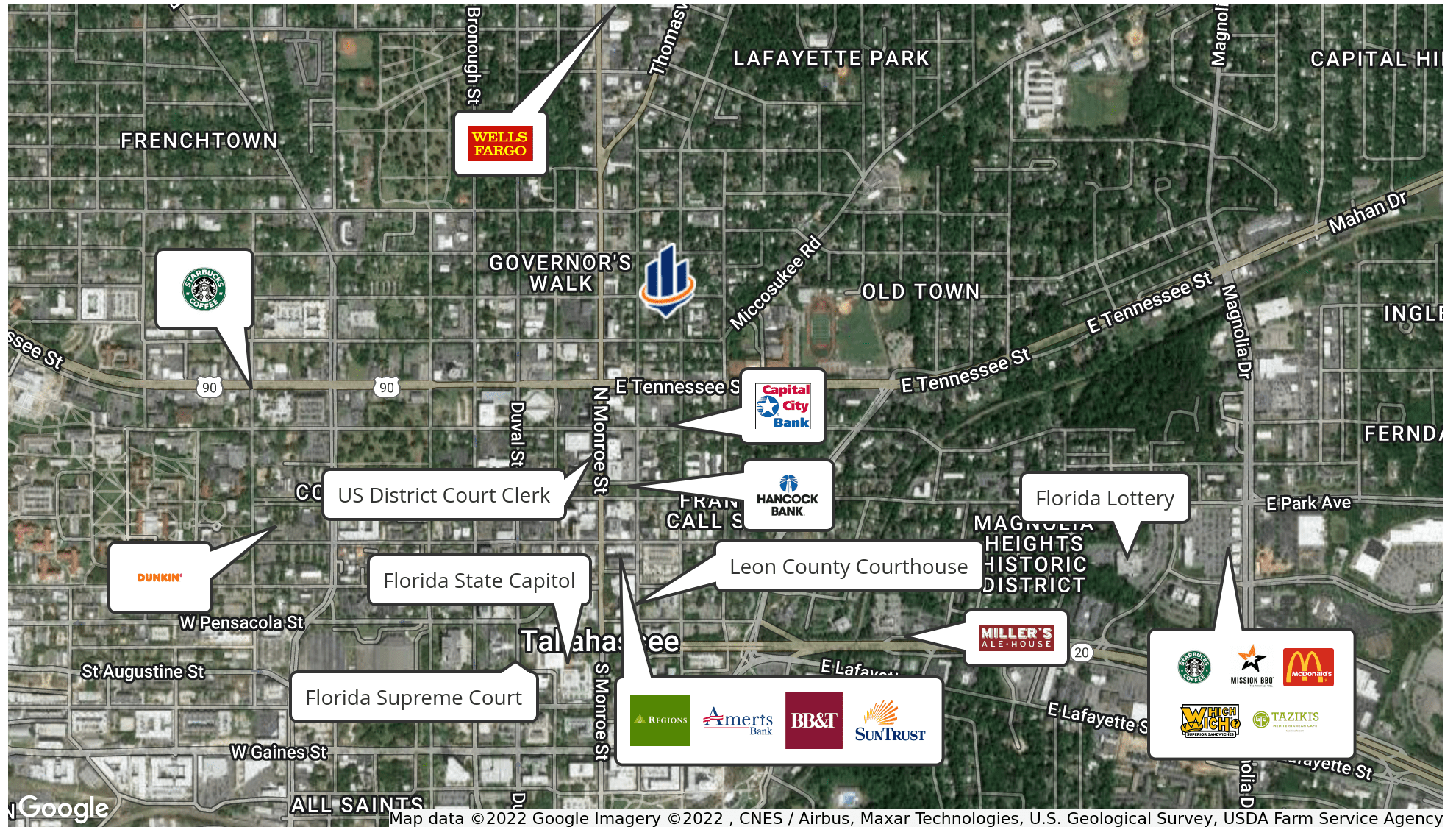
First Floor



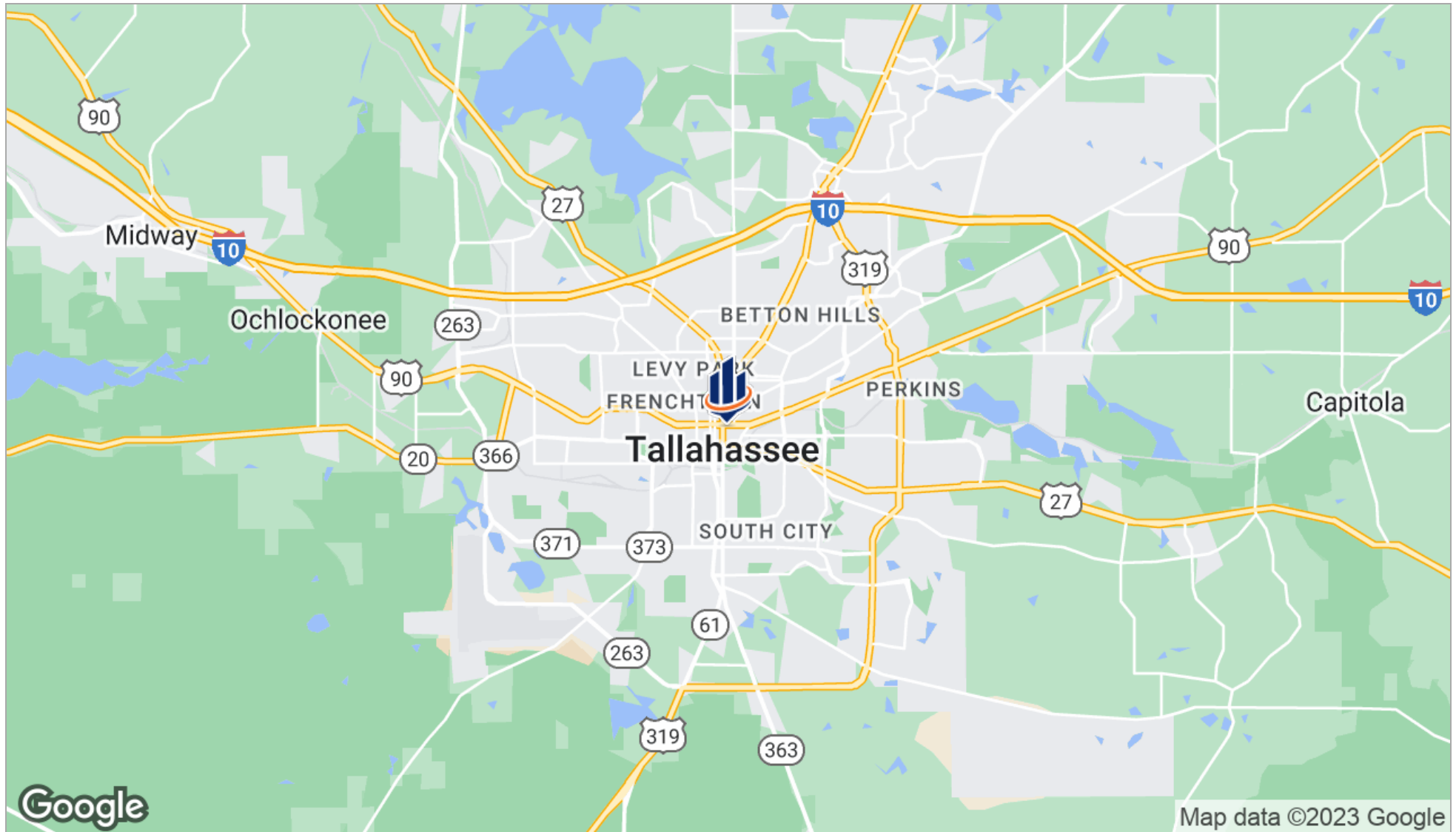
Second Floor



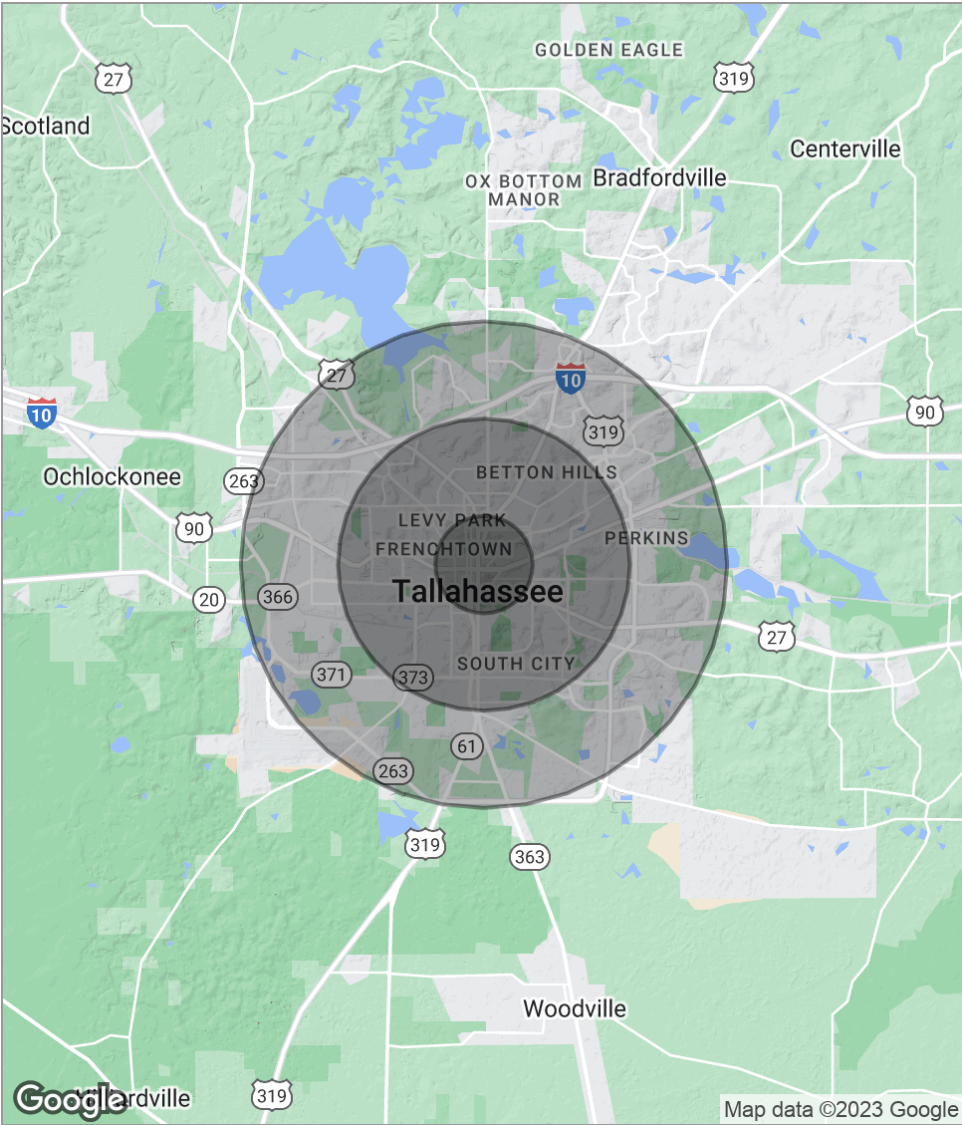
Retailer Map



Location Maps



Demographics Map



POPULATION	1 MILE	3 MILES	5 MILES
Total population	8,994	94,543	172,081
Median age	33.2	28.2	29.2
Median age [Male]	33.9	27.7	28.5
Median age [Female]	32.9	28.6	29.8
HOUSEHOLDS & INCOME	1 MILE	3 MILES	5 MILES
Total households	4,466	38,943	72,229
# of persons per HH	2.0	2.4	2.4
Average HH income	\$38,675	\$43,042	\$47,425
Average house value	\$270,151	\$221,221	\$211,182

* Demographic data derived from 2020 ACS - US Census