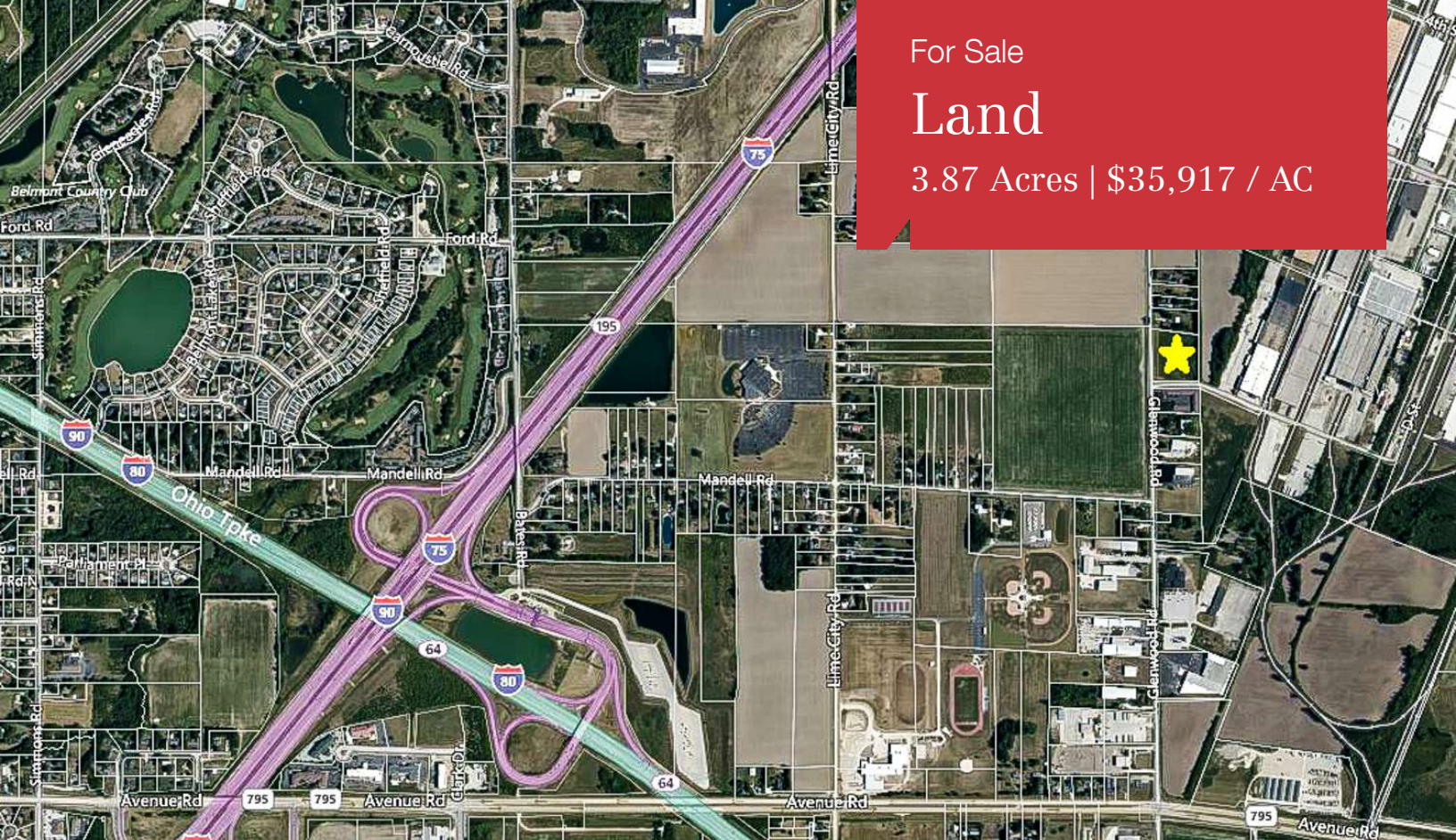


For Sale

Land

3.87 Acres | \$35,917 / AC



29250 Glenwood Rd

Perrysburg, Ohio 43551

Property Highlights

Property Description

3.87-acre land parcel for sale in Perrysburg Township. All utilities are available. Industrial zoning in place. The owner has full survey, utility, and drainage plans available for a previously proposed site.

OFFERING SUMMARY

Sale Price	\$139,000
Lot Size	3.87 Acres

DEMOGRAPHICS

Stats	Population	Avg. HH Income
1 Mile	1,288	\$75,668
5 Miles	120,627	\$53,798
10 Miles	469,083	\$52,073

For more information



Stephanie Kuhlman

O: 419 960 4410 x315

skuhlman@naiharmon.com

For Sale

Land

3.87 Acres | \$35,917 / AC

GENERAL INFORMATION

Location:	Glenwood Road
Closest Intersection:	Mandell Road
City, State:	Perrysburg Twp, Ohio
County:	Wood
Zip:	43551
Parcel No:	P57-300-350000012000

REAL ESTATE TAX INFORMATION

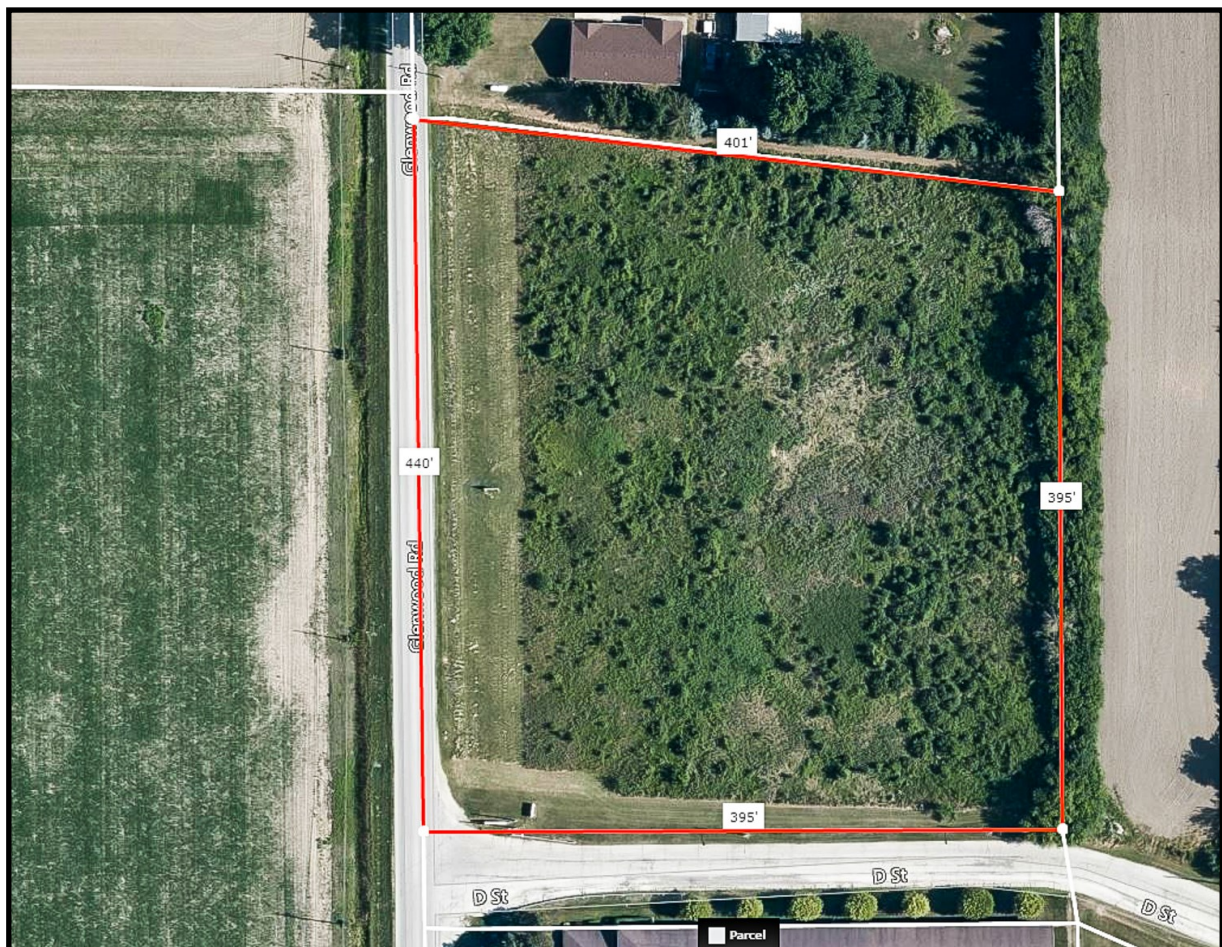
Real Estate Tax Year:	2019
Total Annual Taxes:	\$3,789.15

PROPERTY INFORMATION

Land Size:	3.87 Acres
Land Dimensions:	440'x395'
Frontage	440'
Zoning:	Industrial

UTILITIES

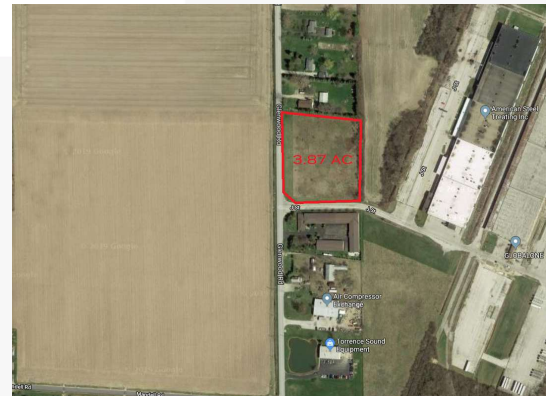
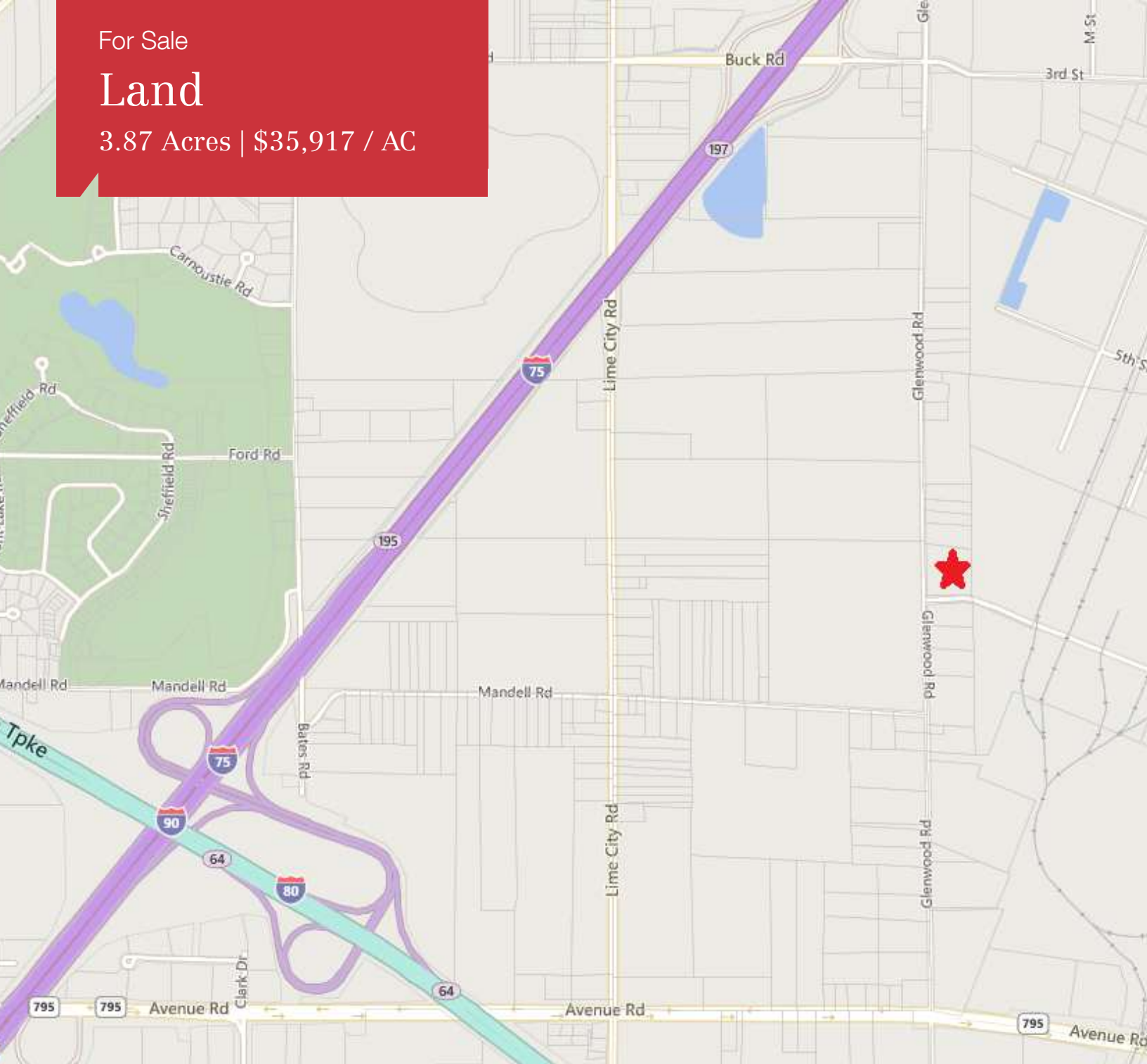
Gas:	Columbia Gas
Water:	N. W. Water & Sewer
Sanitary Sewer:	N.W. Water & Sewer
Electric:	Toledo Edison
Storm Sewer:	N. W. Water & Sewer



For Sale

Land

3.87 Acres | \$35,917 / AC



NAIHarmon Group

NO WARRANTY OR REPRESENTATION, EXPRESS OR IMPLIED, IS MADE AS TO THE ACCURACY OF THE INFORMATION CONTAINED HEREIN, AND THE SAME IS SUBMITTED SUBJECT TO ERRORS, OMISSIONS, CHANGE OF PRICE, RENTAL OR OTHER CONDITIONS, PRIOR SALE, LEASE OR FINANCING, OR WITHDRAWAL WITHOUT NOTICE, AND OF ANY SPECIAL LISTING CONDITIONS IMPOSED BY OUR PRINCIPALS NO WARRANTIES OR REPRESENTATIONS ARE MADE AS TO THE CONDITION OF THE PROPERTY OF ANY HAZARDS CONTAINED THEREIN ARE TO BE IMPLIED.

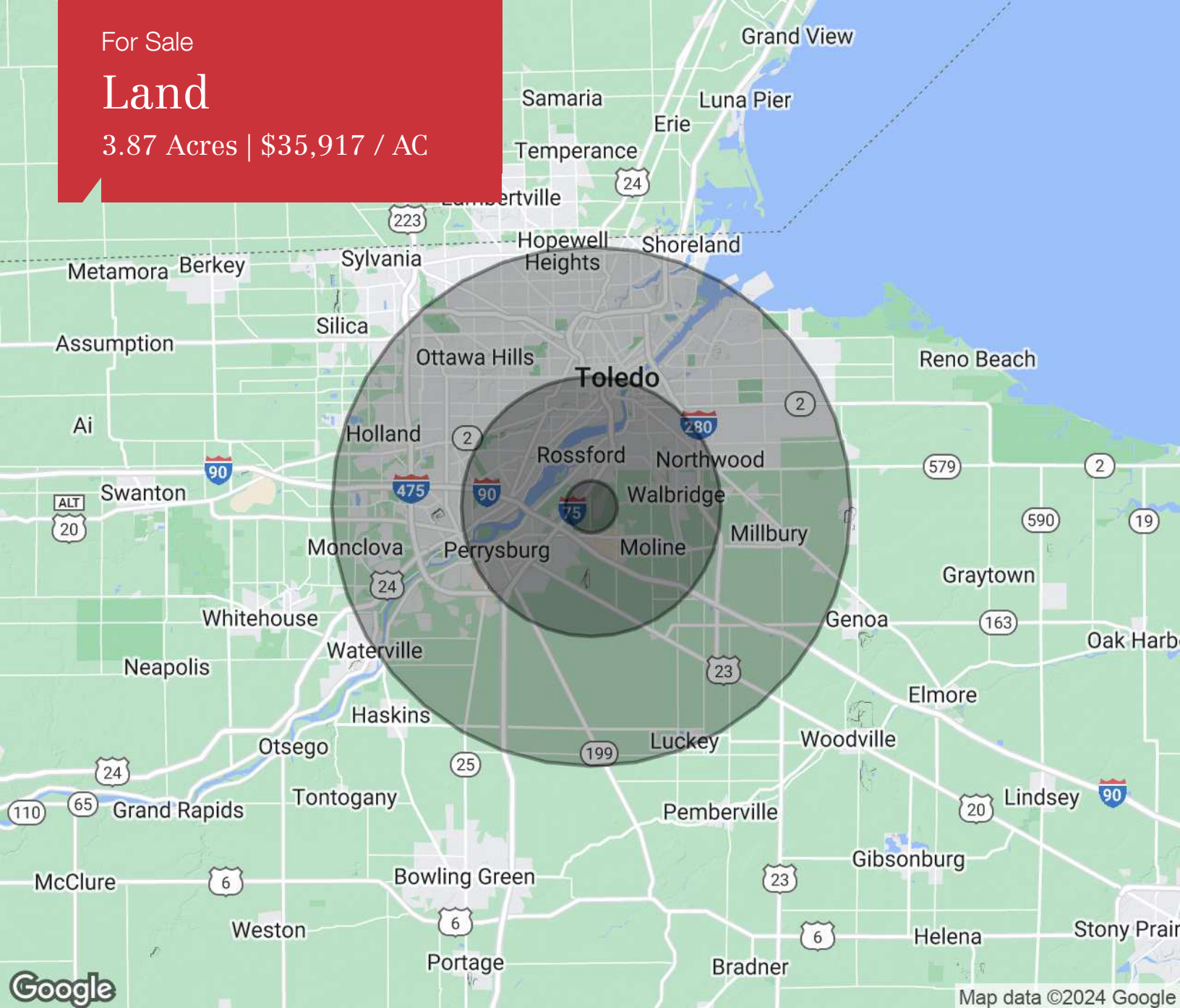
4427 Talmadge Rd, Suite A
Toledo, OH 43623
419 960 4410 tel
naiharmon.com



For Sale

Land

3.87 Acres | \$35,917 / AC



Population

	1 Mile	5 Miles	10 Miles
TOTAL POPULATION	1,288	120,627	469,083
MEDIAN AGE	41.6	36.0	35.9
MEDIAN AGE (MALE)	40.0	34.8	34.3
MEDIAN AGE (FEMALE)	42.7	37.1	37.4

Households & Income

	1 Mile	5 Miles	10 Miles
TOTAL HOUSEHOLDS	549	49,134	192,116
# OF PERSONS PER HH	2.3	2.5	2.4
AVERAGE HH INCOME	\$75,668	\$53,798	\$52,073
AVERAGE HOUSE VALUE	\$209,807	\$147,778	\$136,759

* Demographic data derived from 2020 ACS - US Census