

CLASS A OFFICE SPACE CLOSE TO HOME DOG FRIENDLY



FOR LEASE

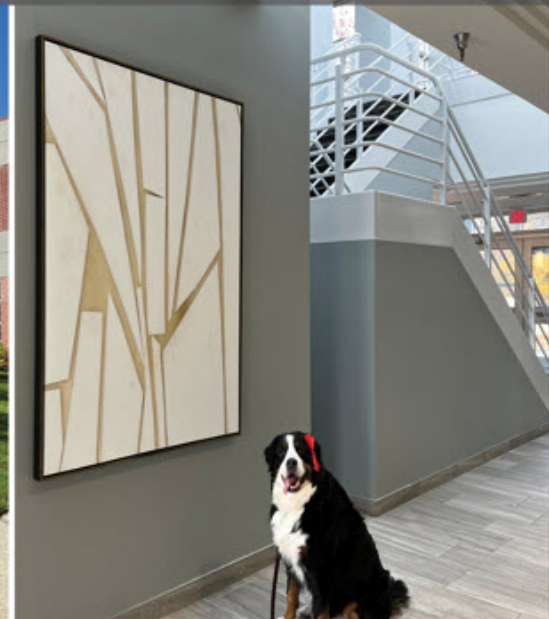
CLASS A OFFICE



MOVE-IN READY SPACE



NEW RENOVATIONS



MICHIGAN'S PREMIER DOG FRIENDLY OFFICE BUILDING!



30201 Orchard Lake Rd

Farmington Hills, Michigan 48334

Property Highlights

- Class A Office in Farmington Hills
- New Lobbies, Bathrooms, Corridors and Landscaping
- Easy Access to I-696 and Northwestern Highway
- Abundant Parking
- On-Site Banking
- Close Proximity to Hotels, Restaurants and Neighborhood Retail
- Professional Building Ownership/Management
- Competitive Lease Rates!

Pet Approval Subject to Compliance with Building Rules and Regulations Outlined in the Lease.



SPACES	SPACE SIZE	LEASE RATE
Suite 130	2,140 SF	\$16.95 plus Electric
Suite 255	2,439 SF	\$16.95 plus Electric



Commercial Real Estate Services, Worldwide.

www.naifarberman.com

Lesley Gutman
Senior Vice President | 248.860.6800
lgutman@farberman.com

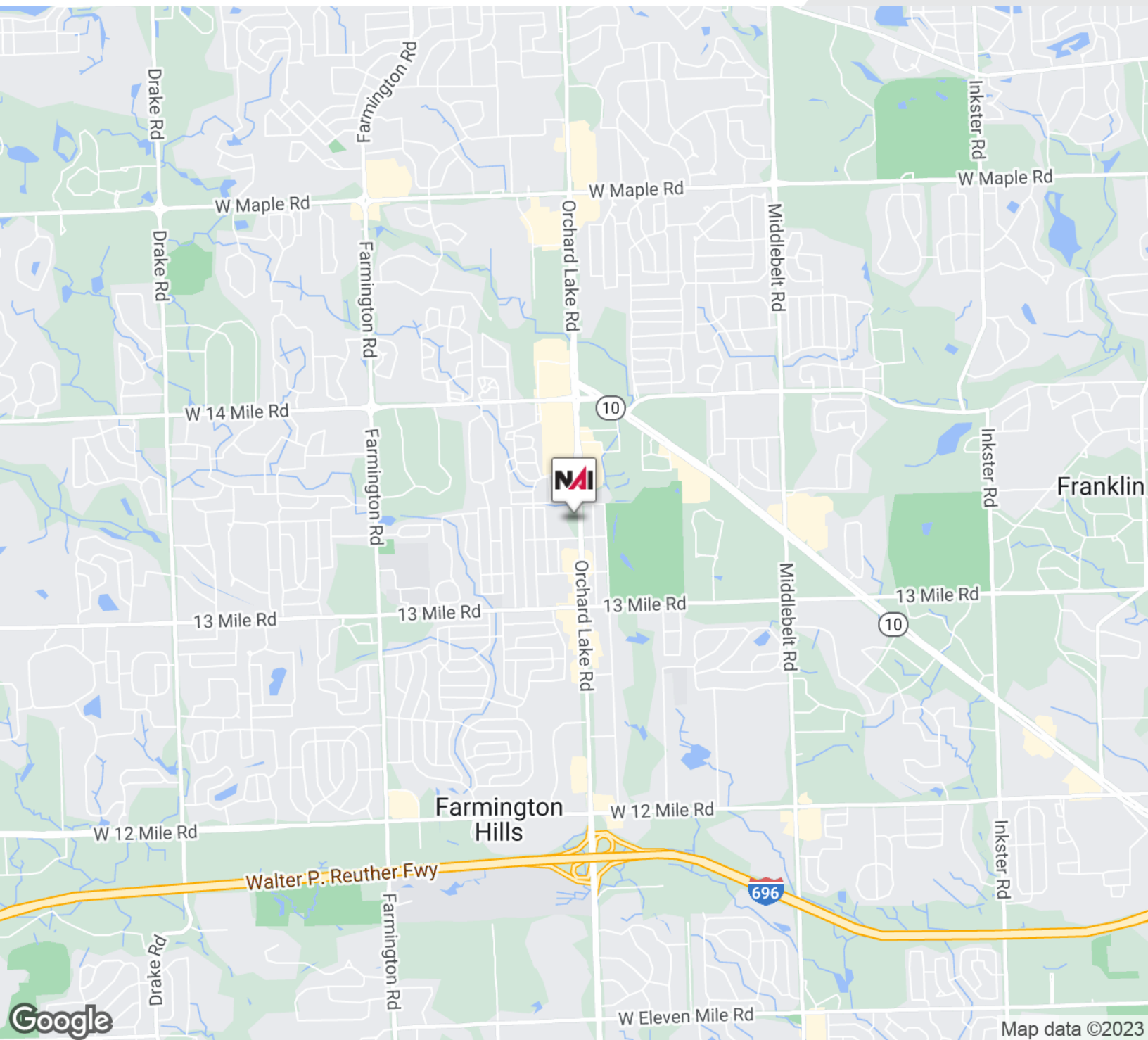
Sheila Fogarty
Senior Vice President | 248.798.9813
fogarty@farberman.com

NO WARRANTY, EXPRESS OR IMPLIED, IS MADE AS TO THE ACCURACY OF THE INFORMATION CONTAINED HEREIN. THIS INFORMATION IS SUBMITTED SUBJECT TO ERRORS, OMISSIONS, CHANGE OF PRICE, RENTAL OR OTHER CONDITIONS, WITHDRAWAL WITHOUT NOTICE, AND IS SUBJECT TO ANY SPECIAL LISTING CONDITIONS IMPOSED BY OUR PRINCIPALS, COOPERATING BROKERS, BUYERS, TENANTS AND OTHER PARTIES WHO RECEIVE THIS DOCUMENT SHOULD NOT RELY ON IT, BUT SHOULD USE IT AS A STARTING POINT OF ANALYSIS, AND SHOULD INDEPENDENTLY CONFIRM THE ACCURACY OF THE INFORMATION CONTAINED HEREIN THROUGH A DUE DILIGENCE REVIEW OF THE BOOKS, RECORDS, FILES AND DOCUMENTS THAT CONSTITUTE RELIABLE SOURCES OF THE INFORMATION DESCRIBED HEREIN. LOGOS ARE FOR IDENTIFICATION PURPOSES ONLY AND MAY BE TRADEMARKS OF THEIR RESPECTIVE COMPANIES. NAI CAPITAL, INC. CA BRE LIC. #01990696.

CLASS A OFFICE SPACE CLOSE TO HOME DOG FRIENDLY



FOR LEASE



Commercial Real Estate Services, Worldwide.

www.naifarbman.com

Lesley Gutman

Senior Vice President | 248.860.6800
lgutman@farbman.com

Sheila Fogarty

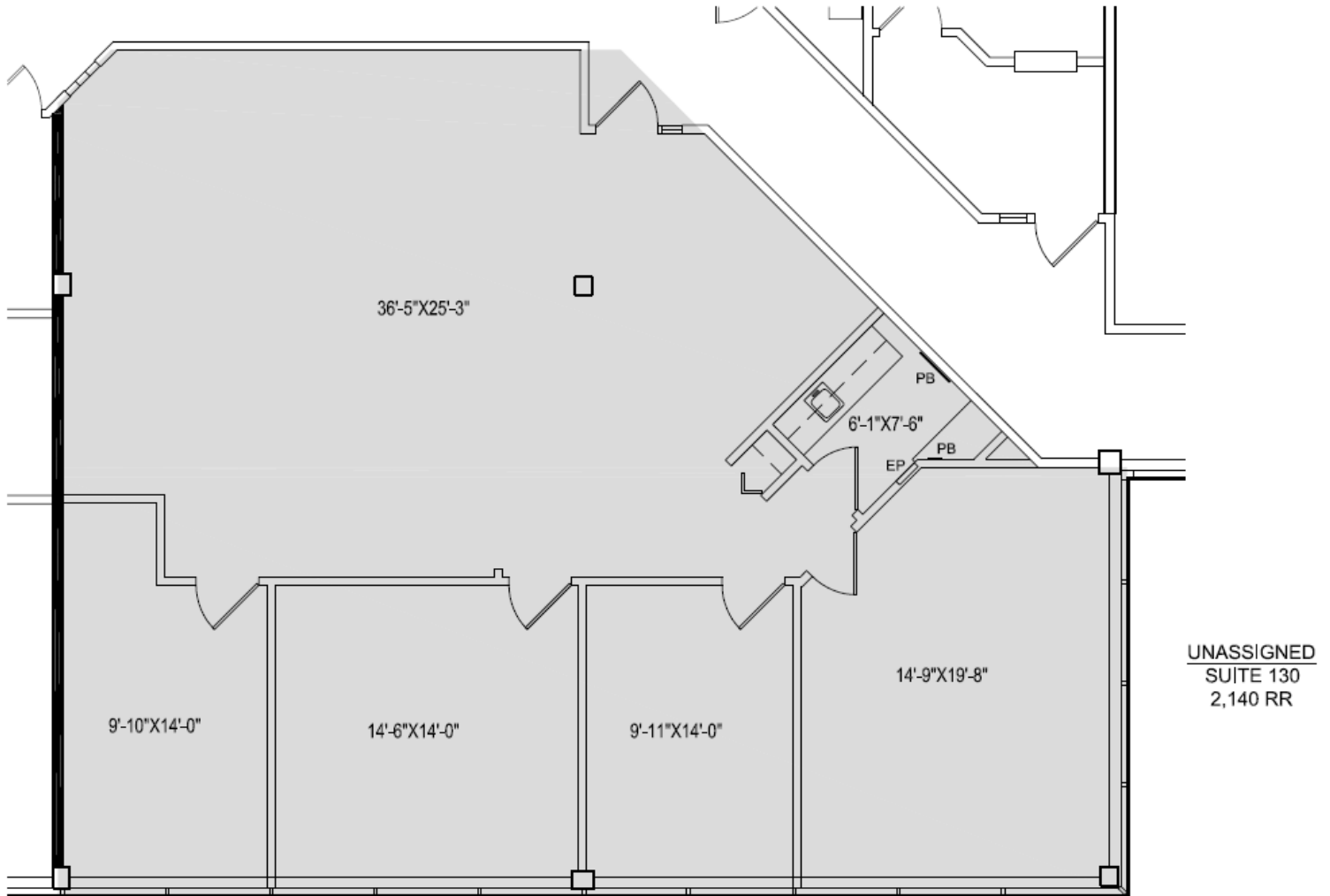
Senior Vice President | 248.798.9813
fogarty@farbman.com

NO WARRANTY, EXPRESS OR IMPLIED, IS MADE AS TO THE ACCURACY OF THE INFORMATION CONTAINED HEREIN. THIS INFORMATION IS SUBMITTED SUBJECT TO ERRORS, OMISSIONS, CHANGE OF PRICE, RENTAL OR OTHER CONDITIONS, WITHDRAWAL WITHOUT NOTICE, AND IS SUBJECT TO ANY SPECIAL LISTING CONDITIONS IMPOSED BY OUR PRINCIPALS. COOPERATING BROKERS, BUYERS, TENANTS AND OTHER PARTIES WHO RECEIVE THIS DOCUMENT SHOULD NOT RELY ON IT, BUT SHOULD USE IT AS A STARTING POINT OF ANALYSIS, AND SHOULD INDEPENDENTLY CONFIRM THE ACCURACY OF THE INFORMATION CONTAINED HEREIN THROUGH A DUE DILIGENCE REVIEW OF THE BOOKS, RECORDS, FILES AND DOCUMENTS THAT CONSTITUTE RELIABLE SOURCES OF THE INFORMATION DESCRIBED HEREIN. LOGOS ARE FOR IDENTIFICATION PURPOSES ONLY AND MAY BE TRADEMARKS OF THEIR RESPECTIVE COMPANIES. NAI Farbman, INC. CA BRE LIC. #01990696.

CLASS A OFFICE SPACE CLOSE TO HOME DOG FRIENDLY



FOR LEASE



WESTFIELD OFFICE CENTER - SUITE 130
30201 ORCHARD LAKE RD. FARMINGTON, MI
6-28-23 SCALE: 3/16" = 1'-0"

NAI Farberman
COMMERCIAL REAL ESTATE SERVICES, WORLDWIDE

NAI Farberman
Commercial Real Estate Services, Worldwide.
www.naifarberman.com

Lesley Gutman
Senior Vice President | 248.860.6800
lgutman@farberman.com

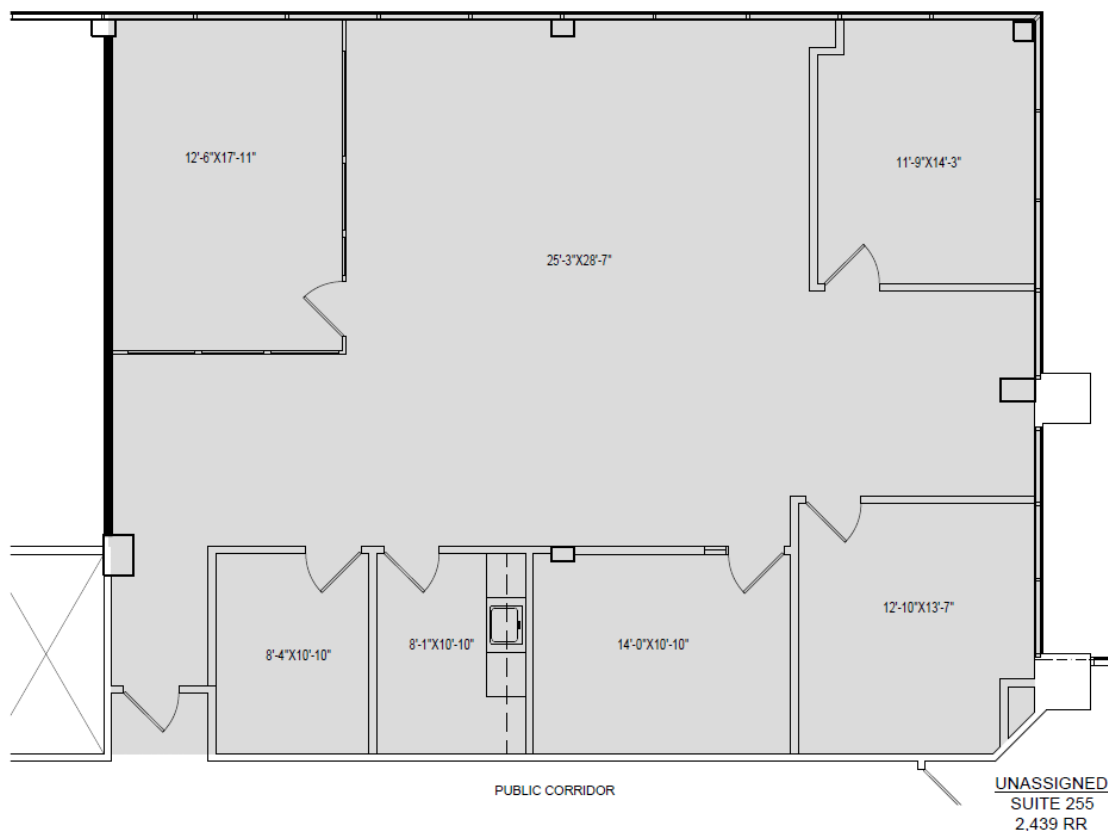
Sheila Fogarty
Senior Vice President | 248.798.9813
fogarty@farberman.com

NO WARRANTY, EXPRESS OR IMPLIED, IS MADE AS TO THE ACCURACY OF THE INFORMATION CONTAINED HEREIN. THIS INFORMATION IS SUBMITTED SUBJECT TO ERRORS, OMISSIONS, CHANGE OF PRICE, RENTAL OR OTHER CONDITIONS, WITHDRAWAL WITHOUT NOTICE, AND IS SUBJECT TO ANY SPECIAL LISTING CONDITIONS IMPOSED BY OUR PRINCIPALS. COOPERATING BROKERS, BUYERS, TENANTS AND OTHER PARTIES WHO RECEIVE THIS DOCUMENT SHOULD NOT RELY ON IT, BUT SHOULD USE IT AS A STARTING POINT OF ANALYSIS, AND SHOULD INDEPENDENTLY CONFIRM THE ACCURACY OF THE INFORMATION CONTAINED HEREIN THROUGH A DUE DILIGENCE REVIEW OF THE BOOKS, RECORDS, FILES AND DOCUMENTS THAT CONSTITUTE RELIABLE SOURCES OF THE INFORMATION DESCRIBED HEREIN. LOGOS ARE FOR IDENTIFICATION PURPOSES ONLY AND MAY BE TRADEMARKS OF THEIR RESPECTIVE COMPANIES. NAI Farberman, INC. CA BRE LIC. #01990696.

CLASS A OFFICE SPACE CLOSE TO HOME DOG FRIENDLY



FOR LEASE



WESTFIELD OFFICE CENTER - SUITE 255
30201 ORCHARD LAKE RD. FARMINGTON, MI
6-28-23 SCALE: 3/16" = 1'-0"



PREPARED BY METRO CAD GROUP



Commercial Real Estate Services, Worldwide.

www.naifarberman.com

Lesley Gutman
Senior Vice President | 248.860.6800
lgutman@farberman.com

Sheila Fogarty
Senior Vice President | 248.798.9813
fogarty@farberman.com

NO WARRANTY, EXPRESS OR IMPLIED, IS MADE AS TO THE ACCURACY OF THE INFORMATION CONTAINED HEREIN. THIS INFORMATION IS SUBMITTED SUBJECT TO ERRORS, OMISSIONS, CHANGE OF PRICE, RENTAL OR OTHER CONDITIONS, WITHDRAWAL WITHOUT NOTICE, AND IS SUBJECT TO ANY SPECIAL LISTING CONDITIONS IMPOSED BY OUR PRINCIPALS. COOPERATING BROKERS, BUYERS, TENANTS AND OTHER PARTIES WHO RECEIVE THIS DOCUMENT SHOULD NOT RELY ON IT, BUT SHOULD USE IT AS A STARTING POINT OF ANALYSIS, AND SHOULD INDEPENDENTLY CONFIRM THE ACCURACY OF THE INFORMATION CONTAINED HEREIN THROUGH A DUE DILIGENCE REVIEW OF THE BOOKS, RECORDS, FILES AND DOCUMENTS THAT CONSTITUTE RELIABLE SOURCES OF THE INFORMATION DESCRIBED HEREIN. LOGOS ARE FOR IDENTIFICATION PURPOSES ONLY AND MAY BE TRADEMARKS OF THEIR RESPECTIVE COMPANIES. NAI Farberman, INC. CA BRE LIC. #01990696.