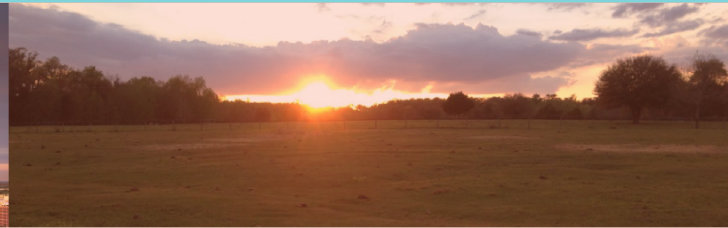
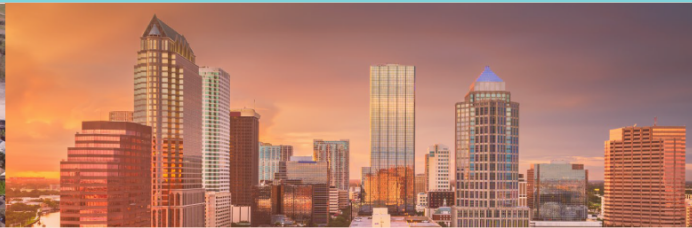


We know this land.



www.thedirtdog.com

Property Description

PROPERTY DESCRIPTION

The property is 515± acres on State Road 52 in Hudson in Pasco County. Current zoning consists of R4, C2, C3, & AC. It's just over one mile west of the Suncoast Parkway and is very close to the Publix anchored Hays Road Town Center.

It has 2,800± feet of frontage on State Road 52. The Sellers are open to selling the commercial portion (38 acres) separately. There's a separate access off of Hays Road to the north end of the property.

The property consists of approximately 132 acres of uplands and 383 acres of wetlands.

LOCATION DESCRIPTION

The property is located on the north side of State Road 52, just west of Hays Road. It's less than 5 minutes to the Suncoast Parkway, 30 minutes to Tampa International Airport, and 35+ minutes to downtown Tampa.

PROPERTY SIZE

515.0 Acres

ZONING

R4, C2, C3, & AC

FUTURE LAND USE

RES-3

PARCEL ID

11-25-17-0000-00100-0020 & 02-25-17-0000-00100-0020

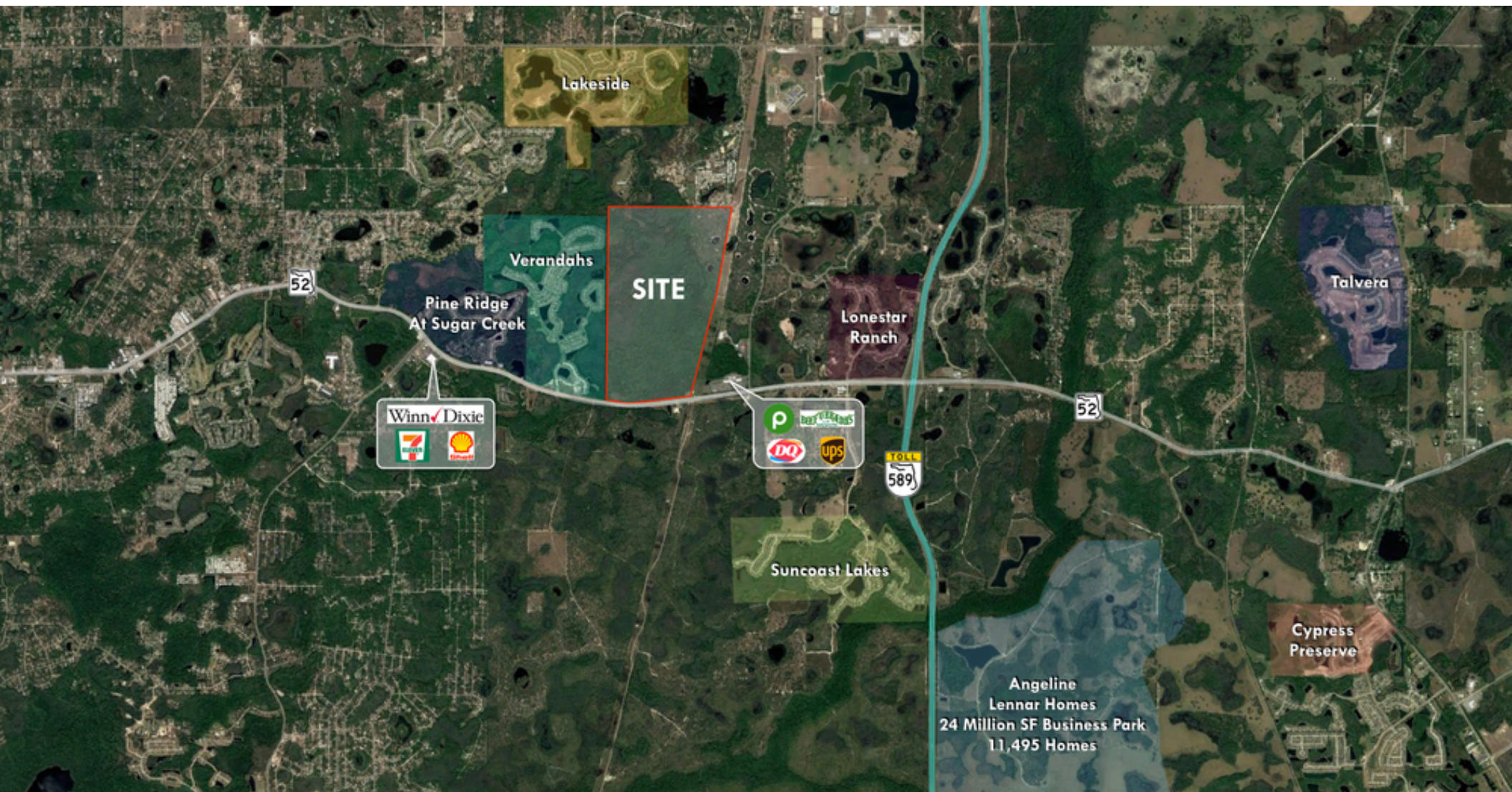
PRICE

\$10,000,000

Aerial Overlay



Aerial



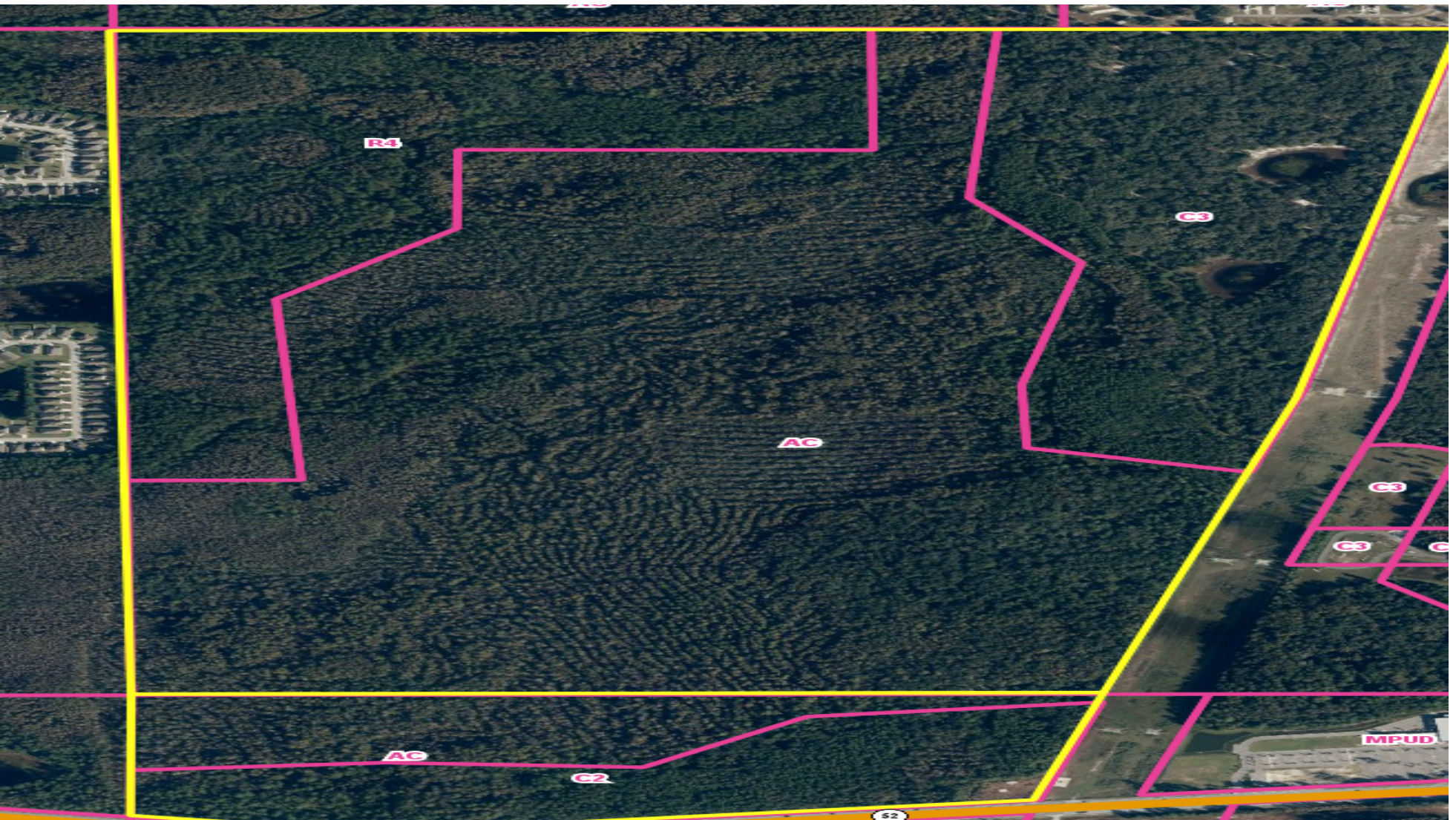
Possible Property Division



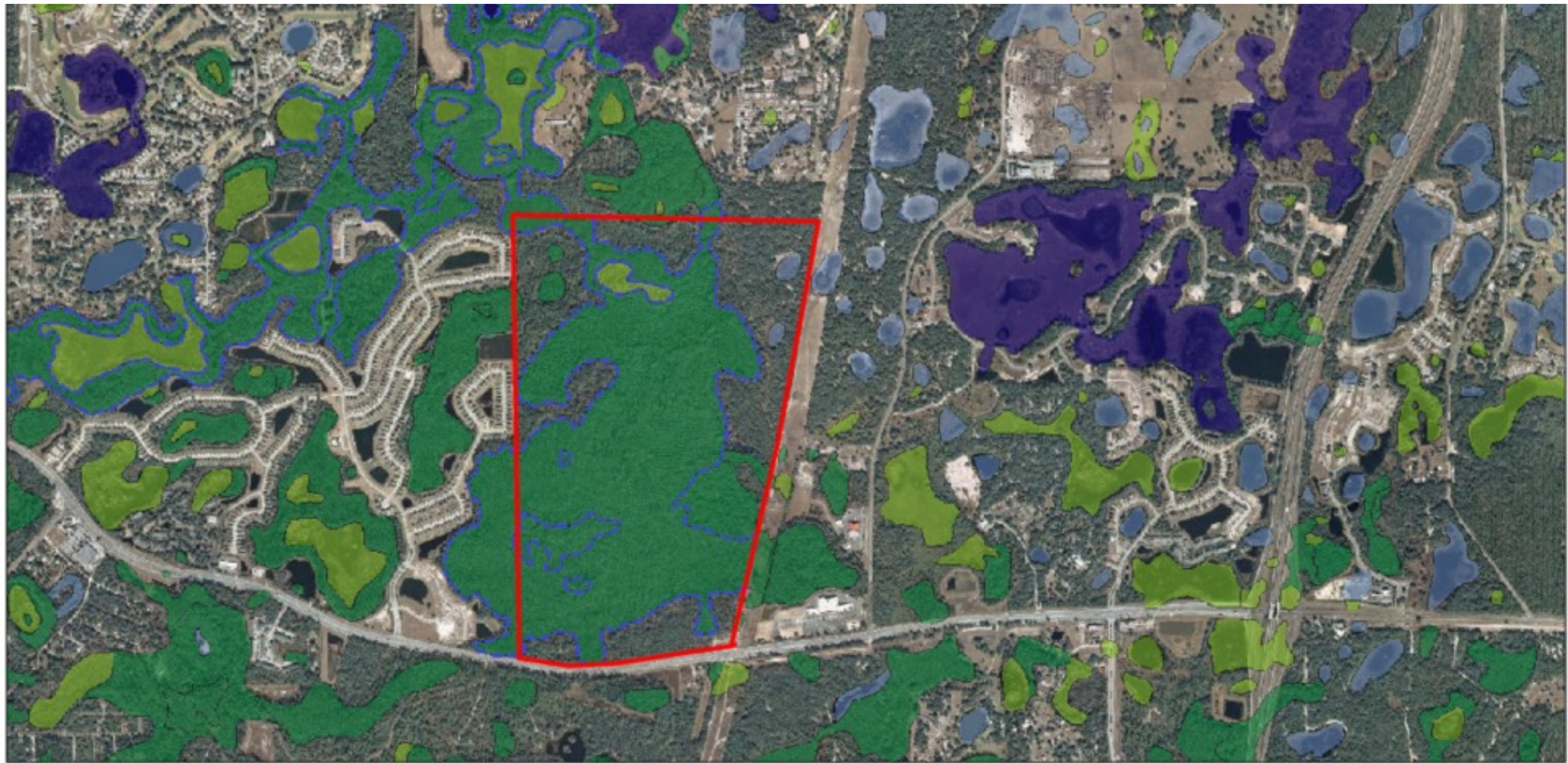
Aerials



Zoning Map



Wetlands Map



Demographics Map & Report

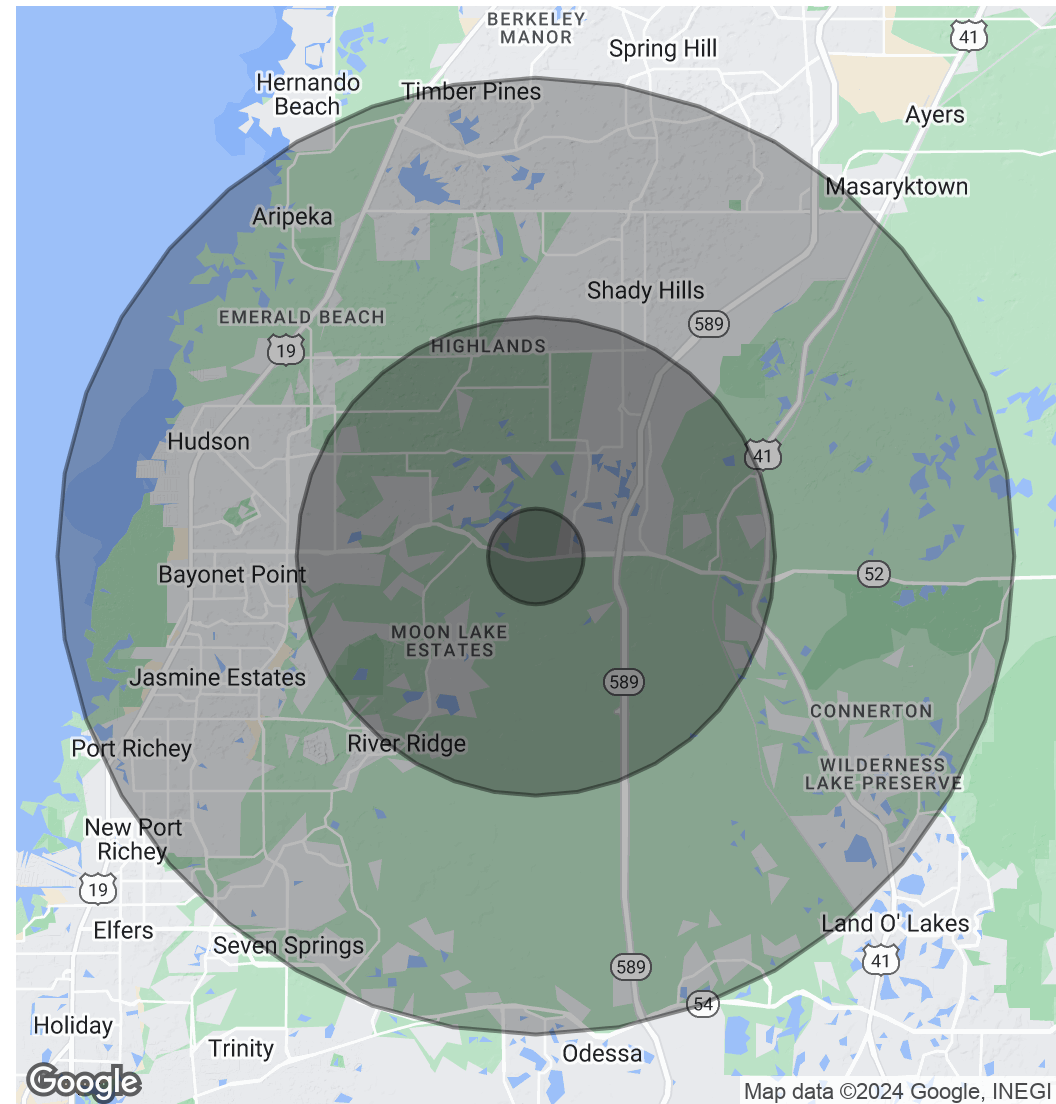
POPULATION

	1 MILE	5 MILES	10 MILES
Total Population	1,306	29,584	229,317
Average age	42.6	44.5	46.9
Average age (Male)	42.3	44.8	46.4
Average age (Female)	43.7	44.4	47.6

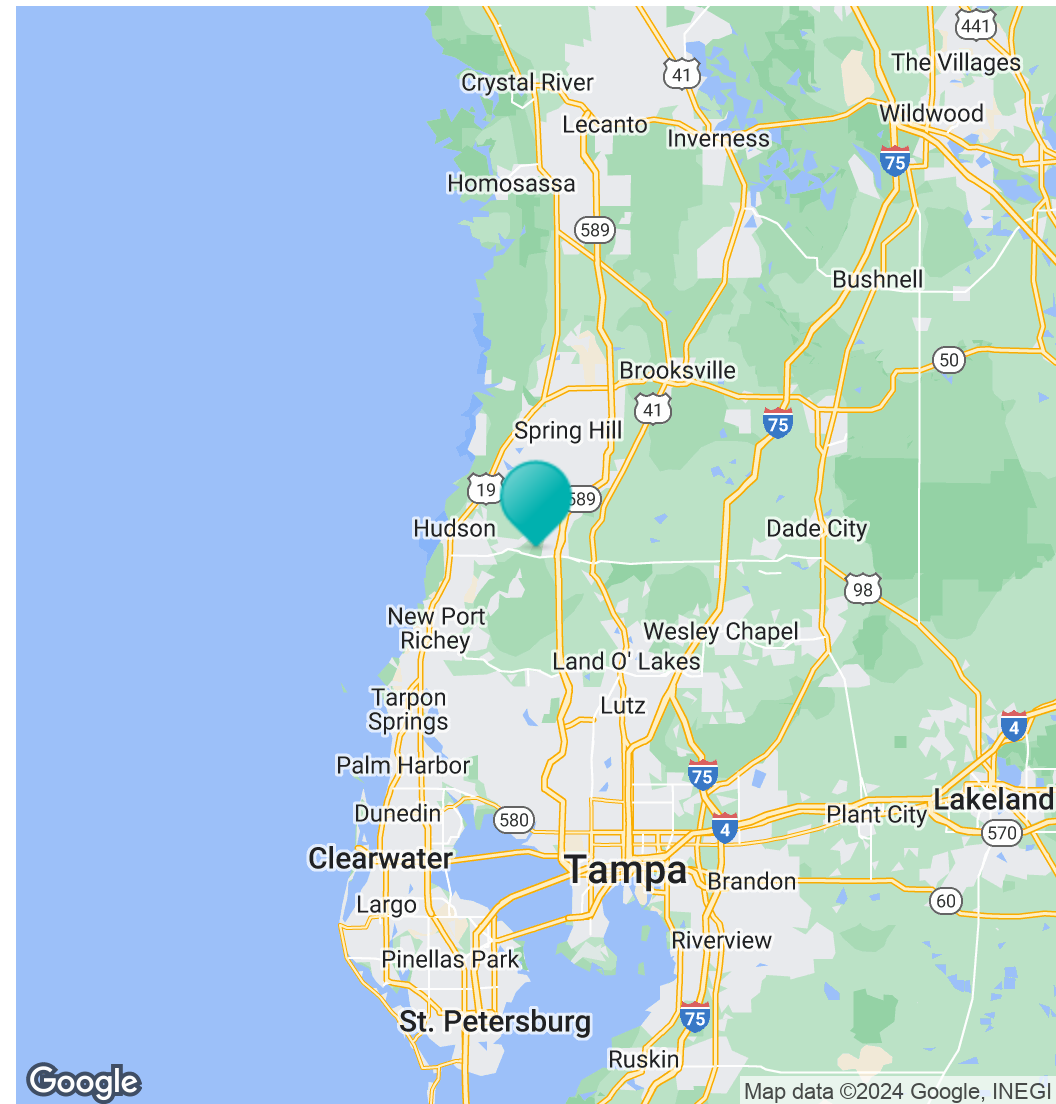
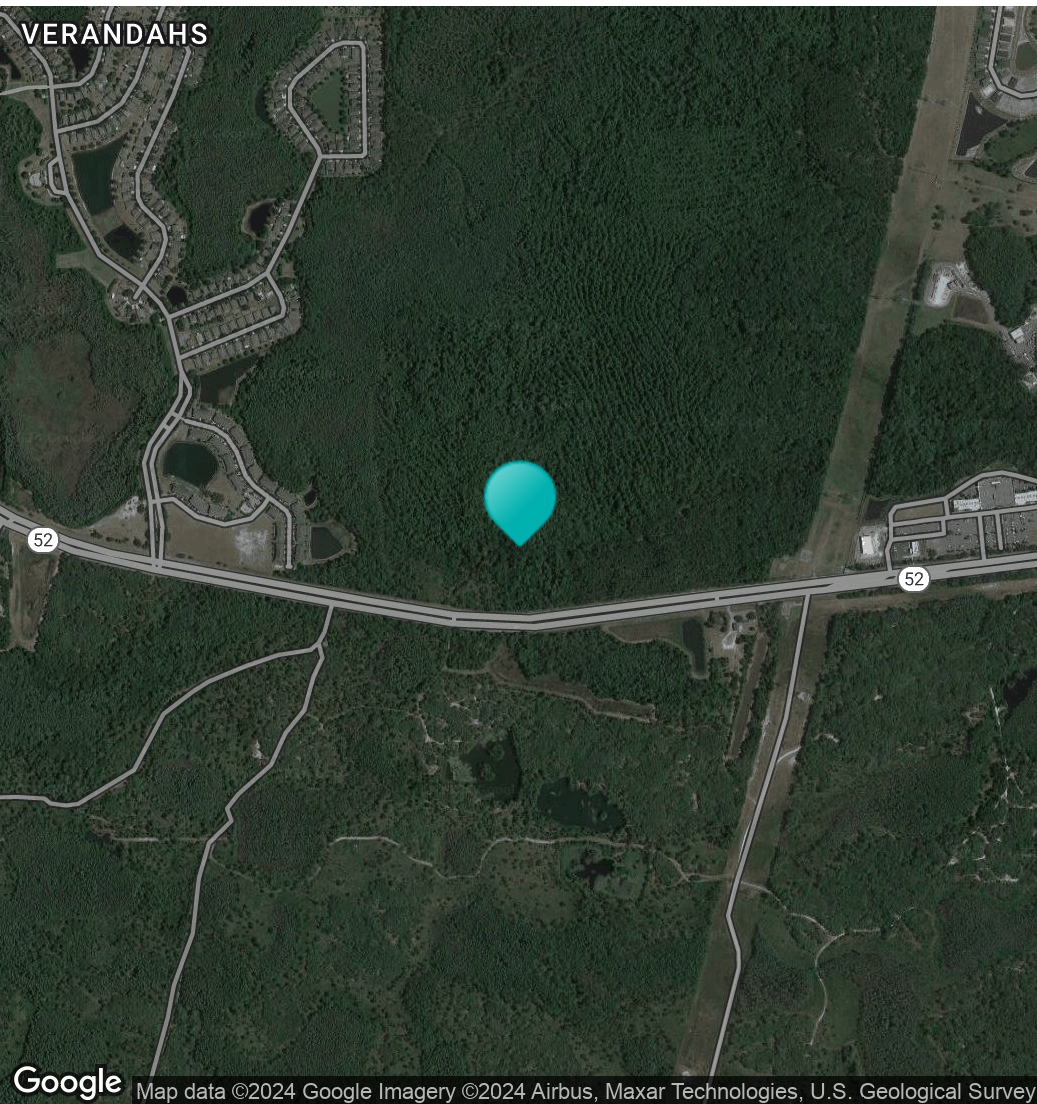
HOUSEHOLDS & INCOME

	1 MILE	5 MILES	10 MILES
Total households	505	11,395	96,142
# of persons per HH	2.6	2.6	2.4
Average HH income	\$49,841	\$54,256	\$52,661
Average house value	\$164,643	\$179,601	\$180,139

* Demographic data derived from 2020 ACS - US Census



Location Maps



Regional Map



Confidentiality & Disclaimer

All materials and information received or derived from Eshenbaugh Land Company, LLC its directors, officers, agents, advisors, affiliates and/or any third party sources are provided without representation or warranty as to completeness, veracity, or accuracy, condition of the property, compliance or lack of compliance with applicable governmental requirements, developability or suitability, financial performance of the property, projected financial performance of the property for any party's intended use or any and all other matters.

Neither Eshenbaugh Land Company, LLC its directors, officers, agents, advisors, or affiliates makes any representation or warranty, express or implied, as to accuracy or completeness of the any materials or information provided, derived, or received. Materials and information from any source, whether written or verbal, that may be furnished for review are not a substitute for a party's active conduct of its own due diligence to determine these and other matters of significance to such party. Eshenbaugh Land Company, LLC will not investigate or verify any such matters or conduct due diligence for a party unless otherwise agreed in writing.

EACH PARTY SHALL CONDUCT ITS OWN INDEPENDENT INVESTIGATION AND DUE DILIGENCE.

Any party contemplating or under contract or in escrow for a transaction is urged to verify all information and to conduct their own inspections and investigations including through appropriate third party independent professionals selected by such party. All financial data should be verified by the party including by obtaining and reading applicable documents and reports and consulting appropriate independent professionals. Eshenbaugh Land Company, LLC makes no warranties and/or representations

regarding the veracity, completeness, or relevance of any financial data or assumptions. Eshenbaugh Land Company, LLC does not serve as a financial advisor to any party regarding any proposed transaction. All data and assumptions regarding financial performance, including that used for financial modeling purposes, may differ from actual data or performance. Any estimates of market rents and/or projected rents that may be provided to a party do not necessarily mean that rents can be established at or increased to that level. Parties must evaluate any applicable contractual and governmental limitations as well as market conditions, vacancy factors and other issues in order to determine rents from or for the property.

Legal questions should be discussed by the party with an attorney. Tax questions should be discussed by the party with a certified public accountant or tax attorney. Title questions should be discussed by the party with a title officer or attorney. Questions regarding the condition of the property and whether the property complies with applicable governmental requirements should be discussed by the party with appropriate engineers, architects, contractors, other consultants and governmental agencies. All properties and services are marketed by Eshenbaugh Land Company, LLC in compliance with all applicable fair housing and equal opportunity laws.

Eshenbaugh Land Company is a licensed real estate brokerage firm in Florida and William A. Eshenbaugh is the broker of record.