



# BUILDING 1 @ GOODWOOD OFFICE PARK ON JEFFERSON HWY

6663 JEFFERSON HWY BATON ROUGE, LA 70806



OFFERED: FOR LEASE

LEASE RATE: **NEGOTIABLE**

**CONTACT:**

GEORGE BONVILLAIN, JR, JD  
504.270.1354

800.895.9329 | <https://elifinrealty.com> | November 2023  
640 Main St, Suite A, Baton Rouge, LA 70801  
Broker of Record, Mathew Laborde; Licensed by the Louisiana, Mississippi, and Ohio Real Estate Commissions. This information has been secured from sources we believe to be reliable, but we make no representations or warranties, expressed or implied, as to the accuracy of the information. References to square footage or age are approximate. Interested parties must verify the information and bears all risk for any inaccuracies.

# OFFERING SUMMARY



## PROPERTY DESCRIPTION

- Goodwood Office Park is a modern office development located on Jefferson Hwy in Baton Rouge.
- The development is comprised of 4 free standing first class professional office buildings with shared parking.
- The incredible detail during design/construction, along with high quality finishes throughout will make Goodwood Office Park among the highest standard of office spaces in the city.
- Buildings 2, 3, and 4 are leased.
- Building 1 is available for lease.

## BUILDING 1 SUMMARY

- Building 1 is ±4,507 SF.
- It is comprised of 13 offices, conference room, lobby, reception office, large break room, copy room, 2 restrooms, and janitor's closet.
- Building 1 is situated on the front right-hand side of the development as you enter from Jefferson Hwy.

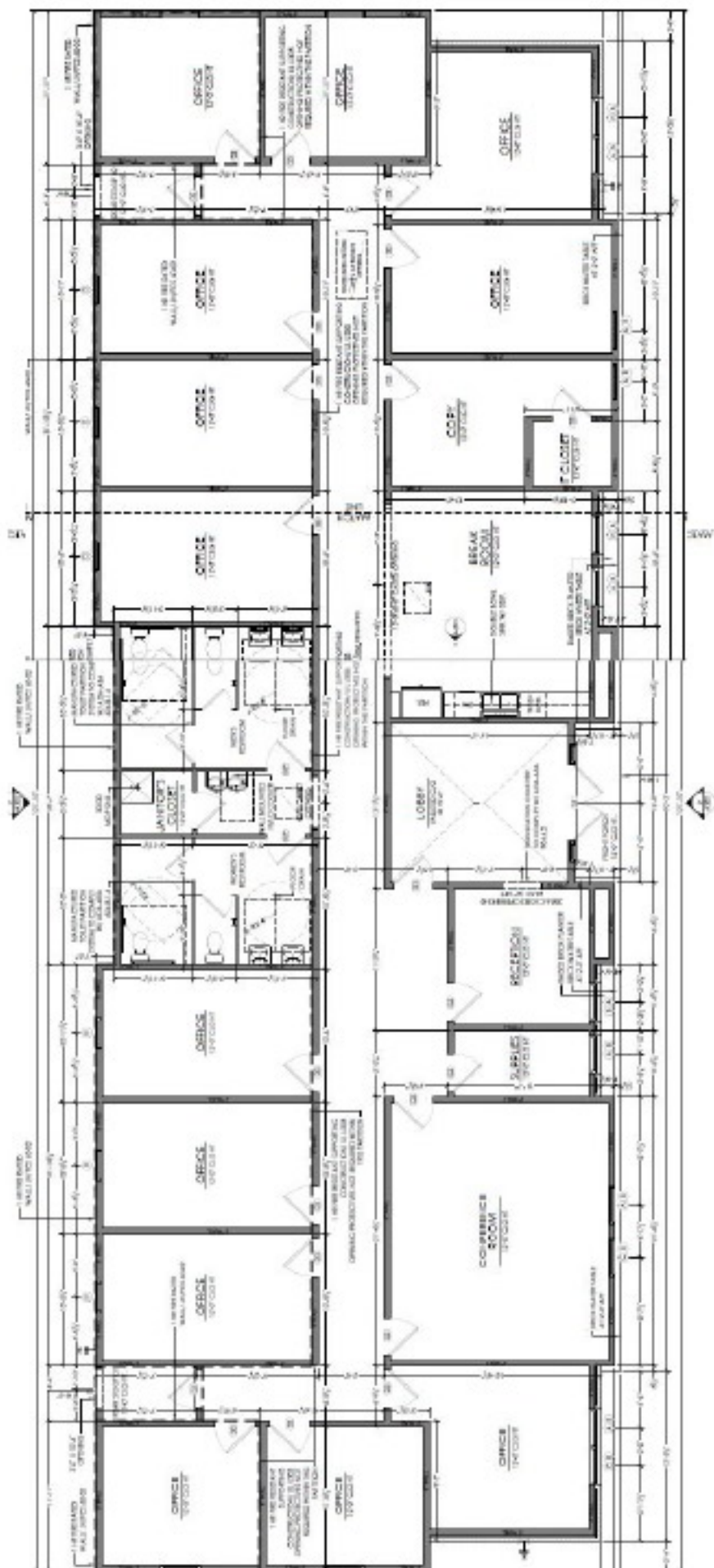
### CONTACT:

GEORGE BONVILLAIN, JR, JD  
504.270.1354

800.895.9329 | <https://elifinrealty.com> | November 2023

640 Main St, Suite A, Baton Rouge, LA 70801  
Broker of Record, Mathew Laborde; Licensed by the Louisiana, Mississippi, and Ohio Real Estate Commissions. This information has been secured from sources we believe to be reliable, but we make no representations or warranties, expressed or implied, as to the accuracy of the information. References to square footage or age are approximate. Interested parties must verify the information and bears all risk for any inaccuracies.





# SITE PLAN



LEASE TYPE	-	TOTAL SPACE	-	LEASE TERM	NEGOTIABLE	LEASE RATE	NEGOTIABLE
SUITE		TENANT		SIZE (SF)	LEASE TYPE		LEASE RATE
Building 1		-		4,507 SF	Modified Gross		\$7,887 per month

CONTACT:  
GEORGE BONVILLAIN, JR, JD  
504.270.1354

800.895.9329 | <https://elifinrealty.com> | November 2023  
640 Main St, Suite A, Baton Rouge, LA 70801  
Broker of Record, Mathew Laborde; Licensed by the Louisiana, Mississippi, and Ohio Real Estate Commissions. This information has been secured from sources we believe to be reliable, but we make no representations or warranties, expressed or implied, as to the accuracy of the information. References to square footage or age are approximate. Interested parties must verify the information and bears all risk for any inaccuracies.



# INTERIOR PHOTOS

**CONTACT:**

GEORGE BONVILLAIN, JR, JD  
504.270.1354

800.895.9329 | <https://elifinrealty.com> | November 2023

640 Main St, Suite A, Baton Rouge, LA 70801  
Broker of Record, Mathew Laborde; Licensed by the Louisiana, Mississippi, and Ohio Real Estate Commissions. This information has been secured from sources we believe to be reliable, but we make no representations or warranties, expressed or implied, as to the accuracy of the information. References to square footage or age are approximate. Interested parties must verify the information and bears all risk for any inaccuracies.



# ADDITIONAL PHOTOS

**CONTACT:**

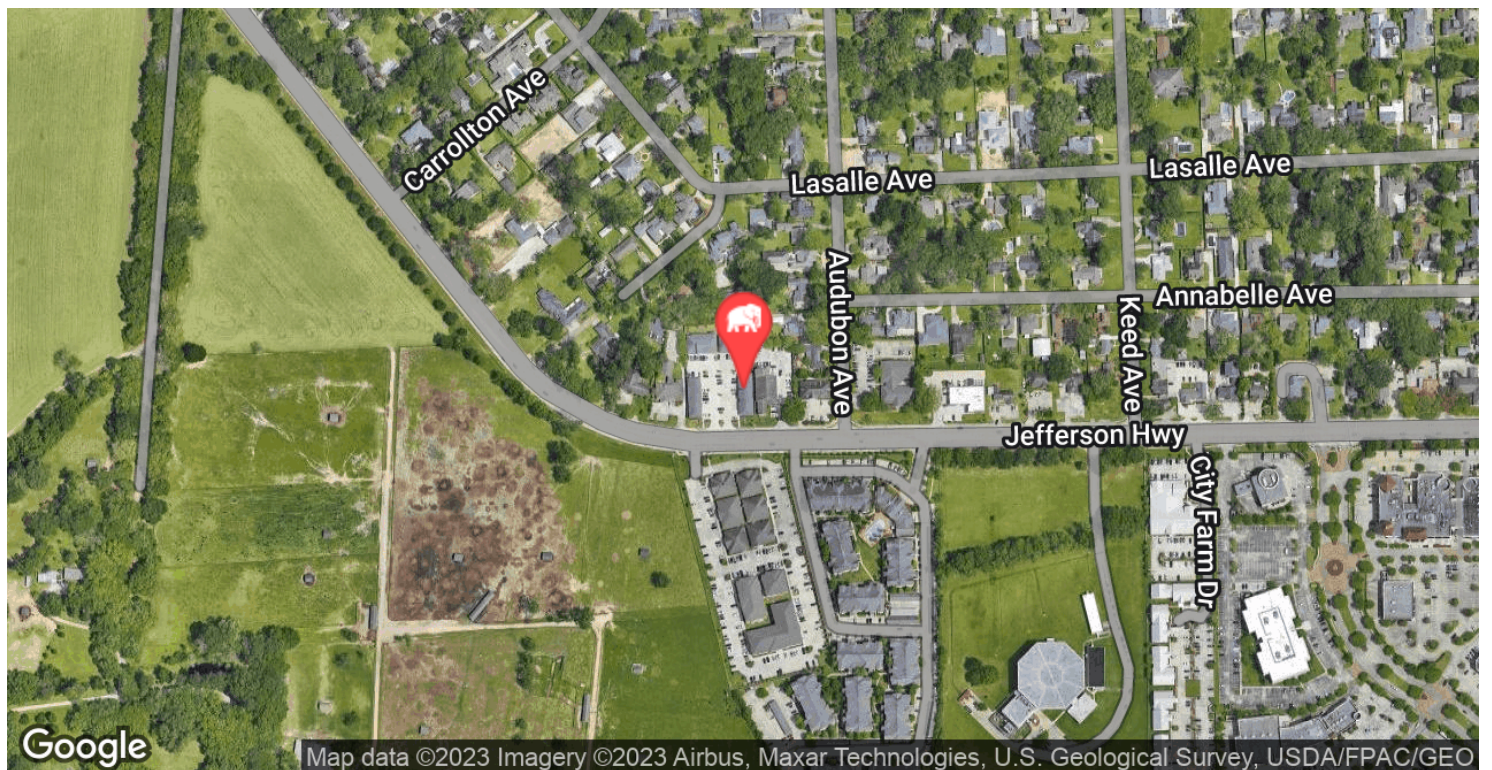
GEORGE BONVILLAIN, JR, JD  
504.270.1354

800.895.9329 | <https://elifinrealty.com> | November 2023

640 Main St, Suite A, Baton Rouge, LA 70801  
Broker of Record, Mathew Laborde; Licensed by the Louisiana, Mississippi, and Ohio Real Estate Commissions. This information has been secured from sources we believe to be reliable, but we make no representations or warranties, expressed or implied, as to the accuracy of the information. References to square footage or age are approximate. Interested parties must verify the information and bears all risk for any inaccuracies.



# LOCATION MAPS

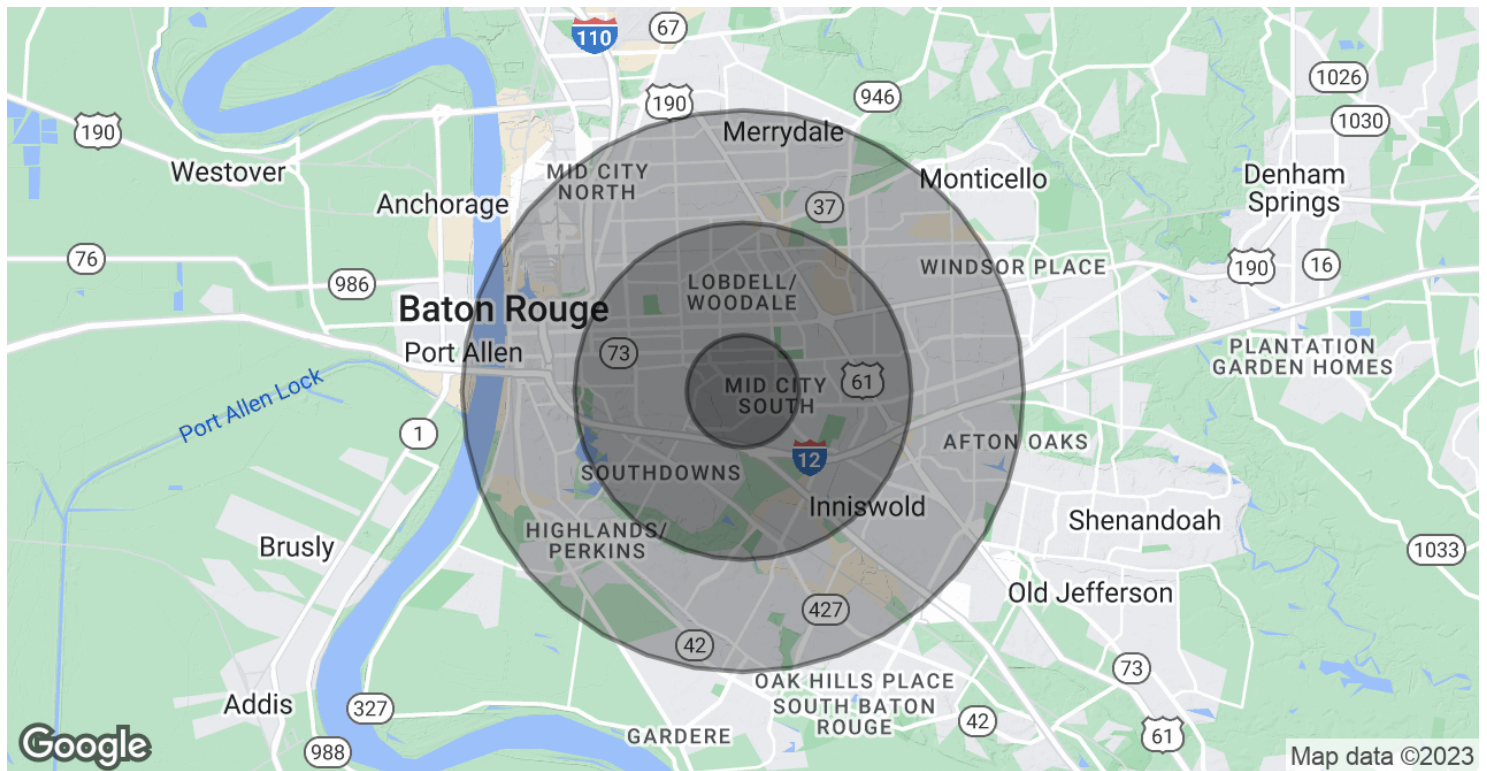
**CONTACT:**

GEORGE BONVILLAIN, JR, JD  
504.270.1354

800.895.9329 | <https://elifinrealty.com> | November 2023

640 Main St, Suite A, Baton Rouge, LA 70801  
Broker of Record, Mathew Laborde; Licensed by the Louisiana, Mississippi, and Ohio Real Estate Commissions. This information has been secured from sources we believe to be reliable, but we make no representations or warranties, expressed or implied, as to the accuracy of the information. References to square footage or age are approximate. Interested parties must verify the information and bears all risk for any inaccuracies.

# DEMOGRAPHICS MAP & REPORT



## POPULATION

	1 MILE	3 MILES	5 MILES
Total Population	6,294	75,301	213,113
Average age	39.4	36.0	33.6
Average age (Male)	36.1	33.3	30.9
Average age (Female)	41.8	38.4	36.0

## HOUSEHOLDS & INCOME

	1 MILE	3 MILES	5 MILES
Total households	2,889	32,565	85,135
# of persons per HH	2.2	2.3	2.5
Average HH income	\$92,806	\$72,225	\$62,258
Average house value	\$365,469	\$307,796	\$240,646

\* Demographic data derived from 2020 ACS - US Census

## CONTACT:

GEORGE BONVILLAIN, JR, JD  
504.270.1354

800.895.9329 | <https://elifinrealty.com> | November 2023

640 Main St, Suite A, Baton Rouge, LA 70801  
Broker of Record, Mathew Laborde; Licensed by the Louisiana, Mississippi, and Ohio Real Estate Commissions. This information has been secured from sources we believe to be reliable, but we make no representations or warranties, expressed or implied, as to the accuracy of the information. References to square footage or age are approximate. Interested parties must verify the information and bears all risk for any inaccuracies.