

For Sale

## Development Land

4 Acres



Map data ©2021 Imagery ©2021, Maxar Technologies, U.S. Geological Survey, USDA Farm Service Agency

8557 Boyd Street | Omaha, NE 68134

\$315,000

### Property Features

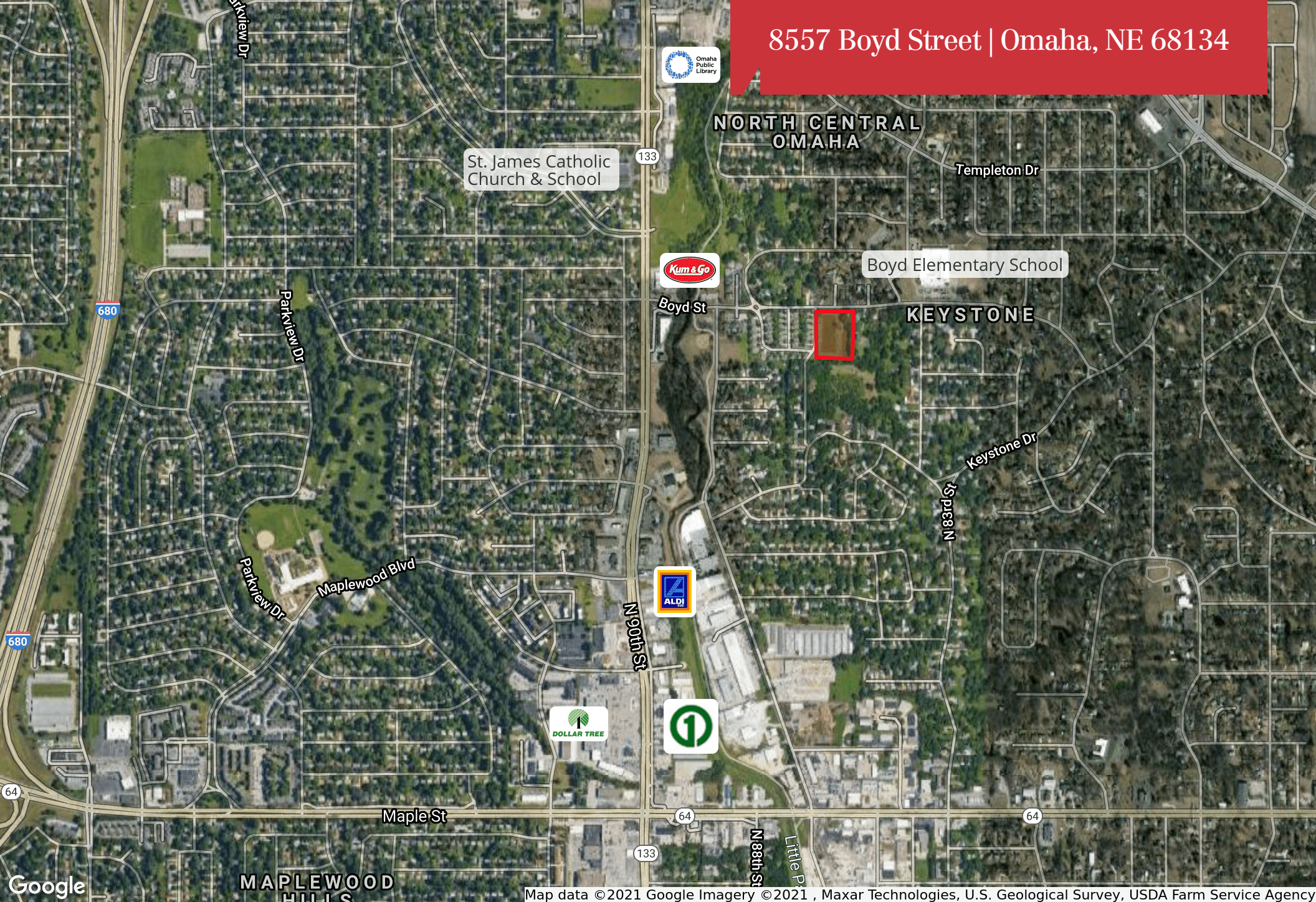
- Zoned Developmental Reserve
- Level topography prime for build to suit
- High traffic counts along 90th Street
- 625 SF rental property included
- Near I-680, Keystone Park, and Boyd Elementary

13321 California Street, Suite 105  
Omaha, NE 68154  
402 255 6060  
[nainpdodge.com](http://nainpdodge.com)

**Debra Graeve-Morrison**  
President  
402 255 6087  
[dgraeve@npdodge.com](mailto:dgraeve@npdodge.com)



8557 Boyd Street | Omaha, NE 68134



Map data © 2021 Google Imagery © 2021 , Maxar Technologies, U.S. Geological Survey, USDA Farm Service Agency