



9829 S 168th Avenue Suite 4A | Omaha, NE 68136

\$17.50 PSF (NNN)

Property Features

- Efficient layout with four private offices, conference room, & break room
- Contemporary buildout complete with glass offices
- NNN: \$4.40 PSF (excludes janitorial and utilities)
- Easy access to HWY 370 and I-80
- Ample surrounding conveniences and restaurants

13321 California Street, Suite 105
Omaha, NE 68154
402 255 6060
nainpdodge.com

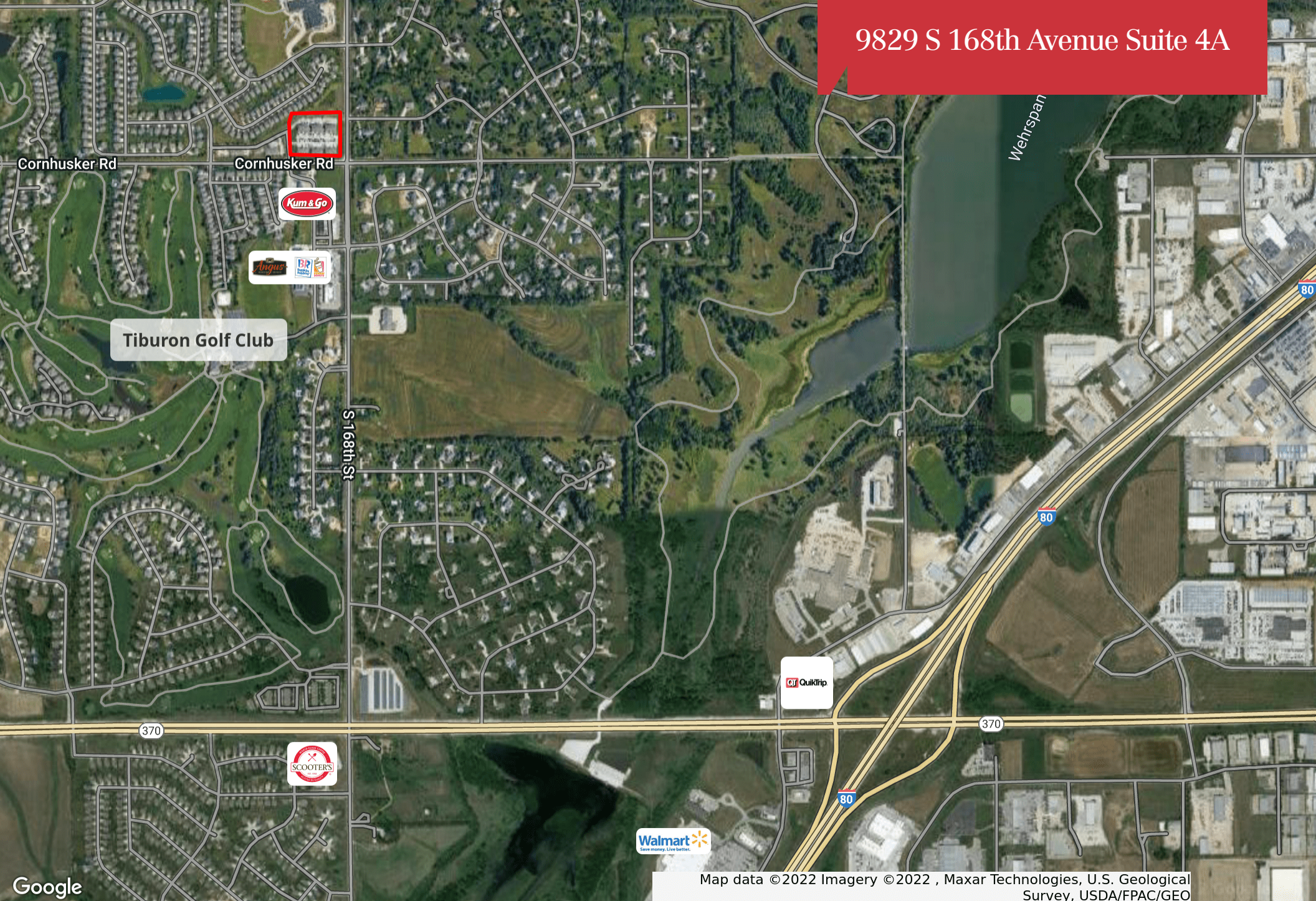
Chris Falcone
Senior Vice President
402 255 6066
cfalcone@npdodge.com

9829 S 168th Avenue Suite 4A





9829 S 168th Avenue Suite 4A



Map data ©2022 Imagery ©2022 , Maxar Technologies, U.S. Geological Survey, USDA/FPAC/GEO