



817 - 3rd St SW
Canton, Ohio 44707

TOTAL SQ FT	6,600
LEASE RATE	\$4.00/SF
LEASE TYPE	NNN
ACRES	0.80
YEAR BUILT	1988/2007
PARCEL	247964
ZONING	B3
TAXES	\$7,158.44/year (\$1.08/SF)
OH DOORS	8 - 10' x 10'

SQ FT	SF/Rate	NNN/Rate	Monthly Rate
6,600	\$4.00	\$1.08	\$2,794.00



Property Features

- Property features 1,000 SF office and 5,600 SF of warehouse/garage space.
- Fenced in parking lot.
- Facility was originally constructed and occupied for an ambulance facility
- Easy access to I-77 (less than 1 mile)
- Agent Interest

Dan Spring, SIOR

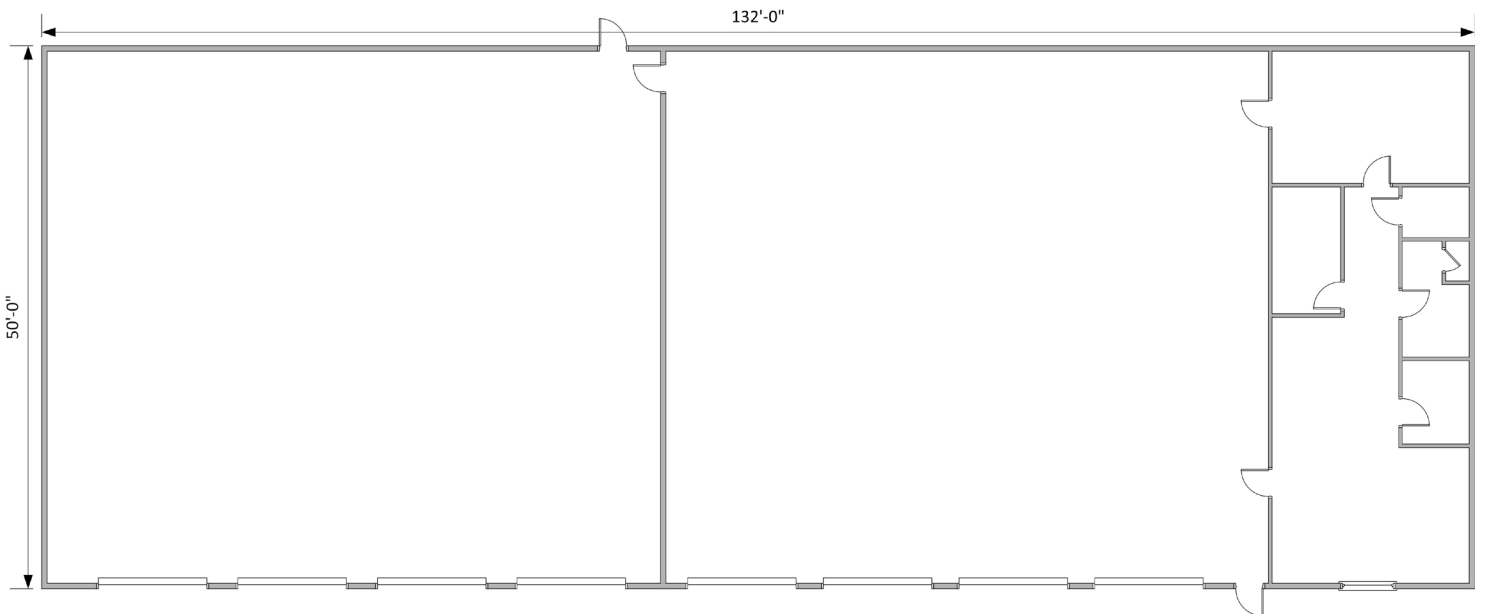
P 330 497 6249
dan@naispring.com

Kelly Sober, CCIM

P 330 497 9837
kelly@naispring.com

NO WARRANTY OR REPRESENTATION, EXPRESS OR IMPLIED, IS MADE AS TO THE ACCURACY OF THE INFORMATION CONTAINED HEREIN, AND THE SAME IS SUBMITTED SUBJECT TO ERRORS, OMISSIONS, CHANGE OF PRICE, RENTAL OR OTHER CONDITIONS, PRIOR SALE, LEASE OR FINANCING, OR WITHDRAWAL WITHOUT NOTICE, AND OF ANY SPECIAL LISTING CONDITIONS IMPOSED BY OUR PRINCIPALS NO WARRANTIES OR REPRESENTATIONS ARE MADE AS TO THE CONDITION OF THE PROPERTY OR ANY HAZARDS CONTAINED THEREIN ARE ANY TO BE IMPLIED.

8234 Pittsburg Ave NW
North Canton, OH 44720
+1 330 966 8800
naispring.com



*DIMENSIONS ARE APPROXIMATE. THIS INFORMATION IS FROM RELIABLE SOURCES BUT IS NOT GUARANTEED AND IS SUBJECT TO CHANGE

NO WARRANTY OR REPRESENTATION, EXPRESS OR IMPLIED, IS MADE AS TO THE ACCURACY OF THE INFORMATION CONTAINED HEREIN, AND THE SAME IS SUBMITTED SUBJECT TO ERRORS, OMISSIONS, CHANGE OF PRICE, RENTAL OR OTHER CONDITIONS, PRIOR SALE, LEASE OR FINANCING, OR WITHDRAWAL WITHOUT NOTICE, AND OF ANY SPECIAL LISTING CONDITIONS IMPOSED BY OUR PRINCIPALS NO WARRANTIES OR REPRESENTATIONS ARE MADE AS TO THE CONDITION OF THE PROPERTY OR ANY HAZARDS CONTAINED THEREIN ARE ANY TO BE IMPLIED.

8234 Pittsburg Ave NW
North Canton, OH 44720
+1 330 966 8800
naispring.com