

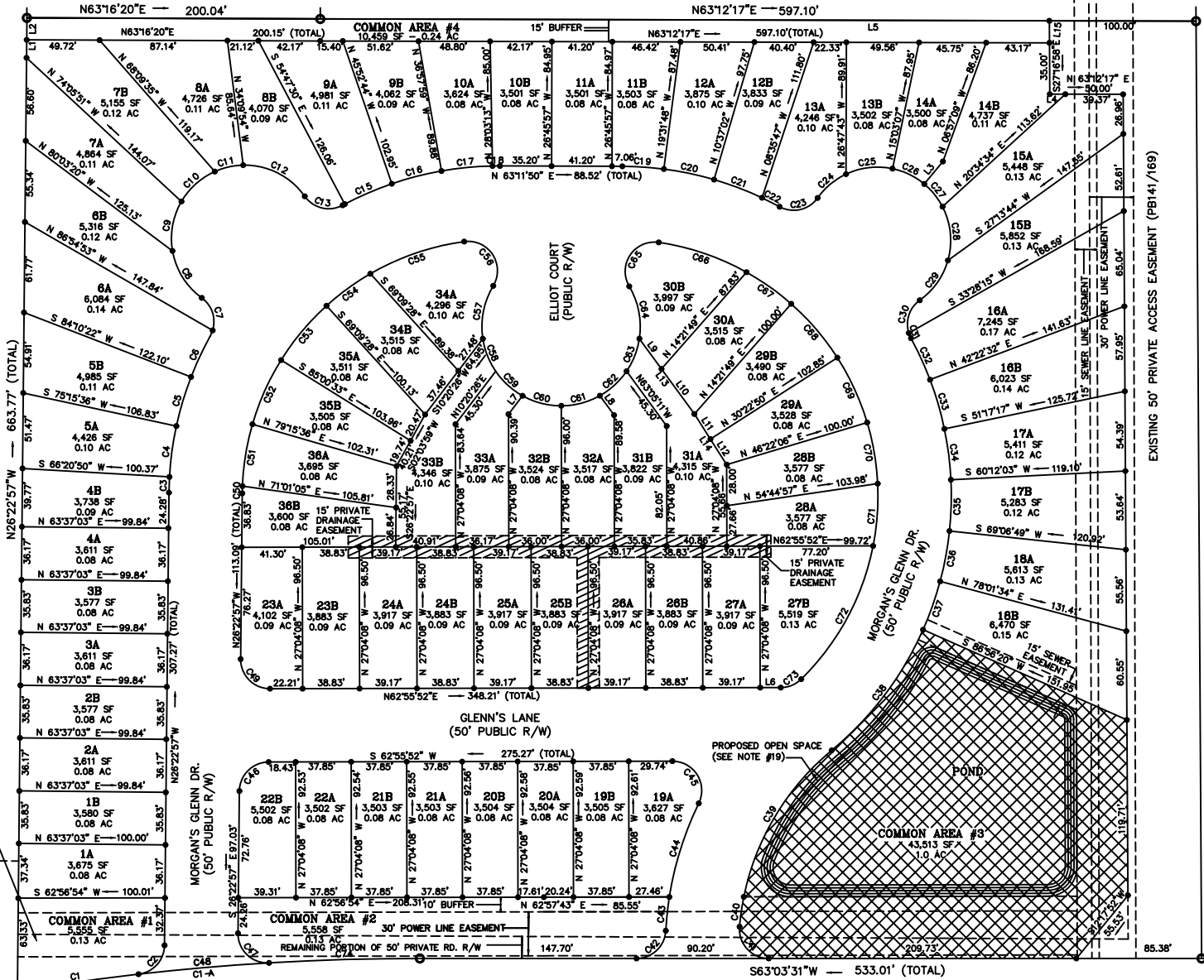
LINE TABLE		
LINE	LENGTH	BEARING
L1	12.26'	N26°22'57"W
L2	15.00'	N26°22'57"W
L3	20.00'	N12°45'05"E
L4	10.64'	N63°12'17"E
L5	497.10'	N63°12'17"E
L6	14.00'	N63°12'17"E
L7	15.76'	N10°20'26"E
L8	16.43'	S63°05'11"E
L9	25.53'	S63°05'11"E
L10	38.06'	S63°05'11"E
L11	20.28'	S59°28'12"E
L12	20.66'	S59°28'12"E
L13	63.61'	S63°05'11"E
L14	40.94'	S59°28'12"E
L15	15.00'	N27°16'58"W

CURVE TABLE					
CURVE	LENGTH	RADIUS	DELTA	CHORD	CHD. BEARING
C1-A	275.62'	1674.78'	29°47'37"	275.21'	S58°26'18"W
C1	83.37'	1674.78'	29°47'37"	83.38'	S58°08'53"W
C2	28.96'	20.00'	109°53'53"	26.49'	N15°05'45"E
C3	10.72'	225.00'	29°40'16"	10.72'	S25°01'03"E
C4	35.00'	225.00'	35°51'15"	34.96'	S19°11'47"E
C5	35.00'	225.00'	35°51'15"	34.96'	S10°17'01"E
C6	30.97'	225.00'	34°49'43"	30.95'	S01°53'01"E
C7	28.03'	20.00'	110°06'23"	26.55'	N33°31'21"W
C8	38.72'	50.00'	71°18'24"	37.76'	S58°55'22"E
C9	34.99'	50.00'	67°02'28"	34.28'	S16°41'26"E
C10	31.04'	50.00'	62°30'32"	30.54'	S21°08'35"W
C11	20.00'	50.00'	49°31'35"	19.87'	S50°23'09"W
C12	48.97'	50.00'	83°03'11"	47.03'	S69°54'03"W
C13	28.03'	20.00'	110°06'23"	26.55'	N72°22'27"E
C14	1.64'	225.00'	27°21'29"	1.64'	S35°00'00"W
C15	35.00'	225.00'	35°51'15"	34.96'	S39°39'53"W
C16	35.00'	225.00'	35°51'15"	34.96'	S48°34'38"W
C17	35.00'	225.00'	35°51'15"	34.96'	S57°29'24"W
C18	5.06'	225.00'	28°13'45"	5.06'	S62°35'25"W
C19	28.42'	225.00'	34°10'38"	28.40'	S66°51'08"W
C20	35.00'	225.00'	35°51'15"	34.96'	S74°55'35"W
C21	35.00'	225.00'	35°51'15"	34.96'	S83°50'21"W
C22	13.44'	225.00'	30°21'51"	13.44'	N89°59'35"W
C23	28.07'	20.00'	110°14'00"	26.58'	N50°04'20"E
C24	25.50'	50.00'	56°18'09"	25.31'	S23°05'25"W
C25	32.46'	50.00'	64°08'07"	31.89'	S56°21'04"W
C26	24.28'	50.00'	64°44'41"	24.03'	S66°30'59"W
C27	20.00'	50.00'	49°31'35"	19.87'	N65°47'22"W
C28	37.77'	50.00'	70°13'30"	36.88'	N32°41'19"W
C29	33.84'	50.00'	65°43'05"	33.20'	N08°20'30"E
C30	25.25'	20.00'	99°15'53"	23.60'	S08°25'54"E
C31	3.83'	20.00'	37°54'36"	3.82'	S80°04'39"E
C32	31.17'	225.00'	34°52'44"	31.15'	N51°35'36"W
C33	35.00'	225.00'	35°51'15"	34.96'	N43°10'06"W
C34	35.00'	225.00'	35°51'15"	34.96'	N34°15'20"W
C35	35.00'	225.00'	35°51'15"	34.96'	N25°20'34"W
C36	35.00'	225.00'	35°51'15"	34.96'	N16°25'49"W
C37	35.00'	225.00'	35°51'15"	34.96'	N07°31'03"W
C38	35.00'	225.00'	35°51'15"	34.96'	N01°23'43"E
C39	35.00'	225.00'	35°51'15"	34.96'	N10°18'28"E
C40	104.12'	225.00'	53°27'17"	103.19'	N10°11'44"E
C41	33.08'	20.00'	121°42'04"	29.43'	S69°33'41"E
C42	30.37'	20.00'	113°55'56"	27.53'	N19°33'48"E
C43	23.16'	225.00'	32°50'20"	23.15'	S20°59'00"E
C44	67.19'	225.00'	44°03'08"	66.95'	S09°28'45"E
C45	40.54'	20.00'	143°05'12"	33.95'	N58°59'47"W
C46	31.18'	20.00'	116°15'18"	28.11'	S18°16'27"W
C47	32.81'	20.00'	120°55'39"	29.25'	S73°22'32"E
C48	89.36'	1674.78'	29°47'37"	89.35'	S58°08'10"W
C49	31.66'	20.00'	117°37'40"	28.45'	S71°43'33"E
C50	4.90'	175.00'	28°32'48"	4.90'	S25°34'48"E
C51	42.87'	175.00'	40°58'43"	42.77'	S17°45'31"E
C52	48.05'	175.00'	42°40'20"	47.90'	S02°52'29"E
C53	48.42'	175.00'	42°47'34"	48.26'	S12°54'58"W
C54	37.11'	175.00'	39°05'30"	37.04'	S28°55'02"W
C55	68.08'	175.00'	49°13'50"	67.65'	S44°08'13"W
C56	44.98'	20.00'	155°48'09"	36.08'	N60°17'16"W
C57	37.57'	54.00'	66°48'31"	36.82'	S15°47'27"E
C58	24.11'	54.00'	52°31'06"	23.91'	S48°30'46"E
C59	24.94'	54.00'	53°24'28"	24.72'	S74°32'04"E
C60	27.62'	54.00'	56°14'34"	27.32'	N77°34'54"E
C61	27.52'	54.00'	56°08'16"	27.22'	N48°19'58"E
C62	24.93'	54.00'	53°24'48"	24.71'	N20°30'25"E
C63	24.02'	54.00'	52°25'22"	23.82'	N05°27'41"W
C64	37.12'	54.00'	68°19'32"	36.39'	N37°53'40"W
C65	45.04'	20.00'	155°58'17"	36.11'	S08°53'43"W
C66	63.54'	175.00'	47°44'36"	63.19'	S81°50'40"W
C67	37.44'	175.00'	39°12'00"	37.37'	N81°37'30"W
C68	48.49'	175.00'	42°49'04"	48.34'	N67°33'27"W
C69	48.83'	175.00'	42°55'45"	48.67'	N51°37'32"W
C70	42.41'	175.00'	40°49'37"	42.31'	N38°41'19"W
C71	42.69'	175.00'	40°54'59"	42.58'	N22°45'30"W
C72	104.84'	175.00'	61°15'55"	103.28'	N01°23'28"E
C73	15.49'	20.00'	71°19'10"	15.11'	N40°44'31"E
C74	101.73'	1674.78'	30°25'18"	101.72'	S61°24'40"W

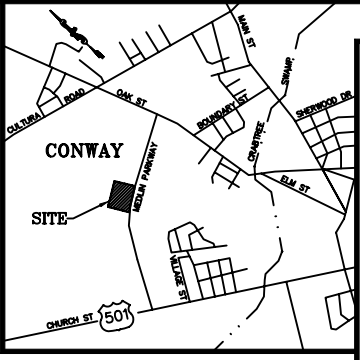
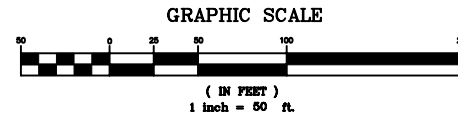
EXIST. 50' ACCESS EASEMENT (PB156/223)

CONWAY CHRISTIAN SCHOOL
TMS:122-00-04-058

CONWAY CHRISTIAN SCHOOL
TMS:122-00-04-051



MEDLIN PARKWAY(75' PUBLIC R/W)



- NOTES:**
- PROPERTY IS TMS # 122-00-04-010.
 - FOR CURRENT ZONING INFORMATION, PLEASE CONTACT THE CITY OF CONWAY PLANNING AND ZONING DEPARTMENT AT 488-9888.
 - ENTIRE DEVELOPMENT WILL BE DUPLEX RESIDENTIAL.
 - WATER SERVICE WILL BE PROVIDED BY THE CITY OF CONWAY.
 - SEWER SERVICE WILL BE PROVIDED BY THE CITY OF CONWAY.
 - PROJECT AREA = 11.84 ACRES
NUMBER OF LOTS = 72
PROJECT DENSITY = 6.08 LOTS PER ACRE
LAKE AREA = 1.00 ACRES
PROJECT DENSITY (NET) = 8.65 LOTS PER ACRE
THERE WILL BE 1,990 LF OF NEW PUBLIC ROADS (2.55 AC).
 - PROPERTY IS LOCATED IN FLOOD ZONE "X" AS SHOWN ON FEMA MAP NO. 45051C0502 H DATED AUGUST 23, 1999.
 - PROPERTY IS OWNED AND BEING DEVELOPED BY:
HONEST EFFORT, LLC
2073 BETHLEHEM RD.
HARTSVILLE, SC 29550
PHONE: (843) 222-6602
 - REFERENCE: "BOUNDARY - TREE - TOPO OF TMS: 122-00-04-010 PREPARED FOR ASI ENGINEERING" PREPARED BY ROBERT A. WARNER AND ASSOCIATES AND DATED MARCH 27, 2006.
 - THE MINIMUM LOT SIZE IS LOT 14A, 3,500 SF (0.08 AC).
 - ALL DRAINAGE EASEMENTS ARE TO BE CLEARED AND ARE TO REMAIN FREE AND CLEAR OF ALL STRUCTURES AND OTHER OBSTRUCTIONS.
 - A COMMON NON-EXCLUSIVE 10' WIDE UTILITY EASEMENT SHALL BE PLACED ON THE PROPOSED RIGHT-OF-WAY. THIS EASEMENT SHALL BE CLEARED DURING THE SITE PREPARATION PHASE OF DEVELOPMENT.
 - ALL ACTIVITIES, INCLUDING ACTIVITIES BY INDIVIDUAL LOT OWNERS OR LEASE HOLDERS, WILL BE CARRIED OUT IN ACCORDANCE WITH THE APPROVED STORMWATER MANAGEMENT AND SEDIMENT CONTROL PLAN FOR THE SUBDIVISION.
 - FINISHED FLOOR ELEVATIONS ARE TO BE A MINIMUM OF 1 FOOT ABOVE CENTERLINE OF ROAD OR BACK OF CURB.
 - THE POND AND COMMON AREA TO BE OWNED AND MAINTAINED BY THE HOA, MAINTAINED BY THE HOA.
 - HOA/POA DOCUMENTS OR RESTRICTIVE COVENANTS AND EASEMENTS FOR THE DEVELOPMENT SHOWN HEREON WERE RECORDED IN DEED BOOK _____ PAGE _____ ON THIS _____ DAY OF _____, 2006 IN THE OFFICE OF THE REGISTER OF DEEDS FOR HORRY COUNTY.
 - ALL PUBLIC DRAINAGE EASEMENTS SHALL BE OWNED AND MAINTAINED BY THE CITY OF CONWAY. NO UTILITY STRUCTURES SHALL BE LOCATED WITHIN A PLATTED DRAINAGE EASEMENT.
 - THE ROADS WILL BE DEDICATED TO THE CITY OF CONWAY.
 - OPEN SPACE REQUIREMENT:
72 UNITS X 3.02 PEOPLE PER UNIT X .008 ACRE PER PERSON = 1.74 ACRES
1/4 OF OPEN SPACE ALLOWABLE WATER = 0.43 ACRES
PROPOSED POND = 0.61 ACRES (0.43 AC TO BE USED)
OPEN SPACE AROUND POND = 0.39 ACRES
TOTAL OPEN SPACE PROVIDED = 0.82 ACRES
REMAINING 0.92 ACRES REQUIRED PROPOSED TO BE MET WITH A PAYMENT IN LIEU OF LAND DEDICATION
 - EXISTING 50' PRIVATE ACCESS EASEMENT ON THE EAST SIDE OF THE PROPERTY TO BE DEEDED TO THE ADJACENT CONWAY CHRISTIAN SCHOOL.
 - ALL UTILITIES MUST BE UNDERGROUND.

PRELIMINARY SUBDIVISION PLAN
MORGAN'S GLENN SUBDIVISION
LOCATED AT
MEDLIN PARKWAY
CONWAY, SOUTH CAROLINA

SCALE: 1" = 50'
JOB NO. 206010
DESIGNED BY: TPH/BLS
DRAWN BY: TPH/BLS
CHECKED BY: BLS
DATE: 08/14/06
REVISION:
1 - 09/05/06 - REVISIONS PER CITY OF CONWAY COMMENTS
2 - 10/06/06 - REVISE STREET NAME



SHEET NUMBER:
1 of 10



REPRODUCTION OR REUSE OF THIS DRAWING IN WHOLE OR IN PART WITHOUT PRIOR WRITTEN PERMISSION IS STRICTLY FORBIDDEN