



LAND FOR SALE

# Muirfield Lots

7450 NORTH KINGS HIGHWAY MYRTLE BEACH, SC 29572



DREW LANGWAY

843.626.3400

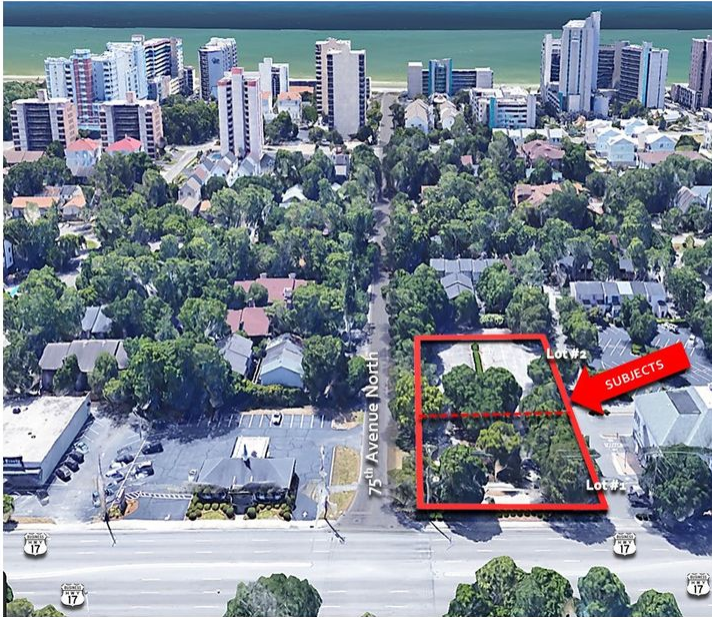
[drew@keystonecommercial.com](mailto:drew@keystonecommercial.com)

4706 Oleander Drive, Myrtle Beach, SC 29577-3537 | [www.keystonecommercial.com](http://www.keystonecommercial.com)



# Muirfield Lots

7450 NORTH KINGS HIGHWAY  
MYRTLE BEACH, SC 29572



## PROPERTY OVERVIEW

**OFFERED FOR SALE:** Approximately 1.05 Acres of Commercial Real Estate in Myrtle Beach, consisting of one (1) North Kings Highway corner lot and one (1) adjacent lot to the East with frontage on 75th Avenue North.

## PROPERTY HIGHLIGHTS

- Site consists of 2 Lots Totaling Approximately 1.05 Acres
- Approximately 150' Frontage on Highway 17 North
- **Lot #1: Highway 17 Business Frontage**
- Approximately 0.50 Acres
- Identified as PIN: #42104030073, City of Myrtle Beach, County of Horry, SC.
- Annual Real Estate Taxes 2019: \$5,058, City of Myrtle Beach, County of Horry, SC.
- Zoned: MU-M (Mixed Use Medium Density), City of Myrtle Beach, County of Horry, SC.
- Average Daily Traffic Count-27,300 (Source: SCDOT 2019)
- \*Cross Easement recorded with the adjacent property owner for 14 parking spaces and ingress/egress
- **Lot #2: 75th North Frontage**
- Approximately 0.55 Acres
- Identified as PIN: #42104030074, City of Myrtle Beach, County of Horry, SC.
- Annual Real Estate Taxes 2019: \$4,816, City of Myrtle Beach, County of Horry, SC.
- Zoned: RMH (MultiFamily Residential High Density), City of Myrtle Beach, County of Horry, SC.

## OFFERING SUMMARY

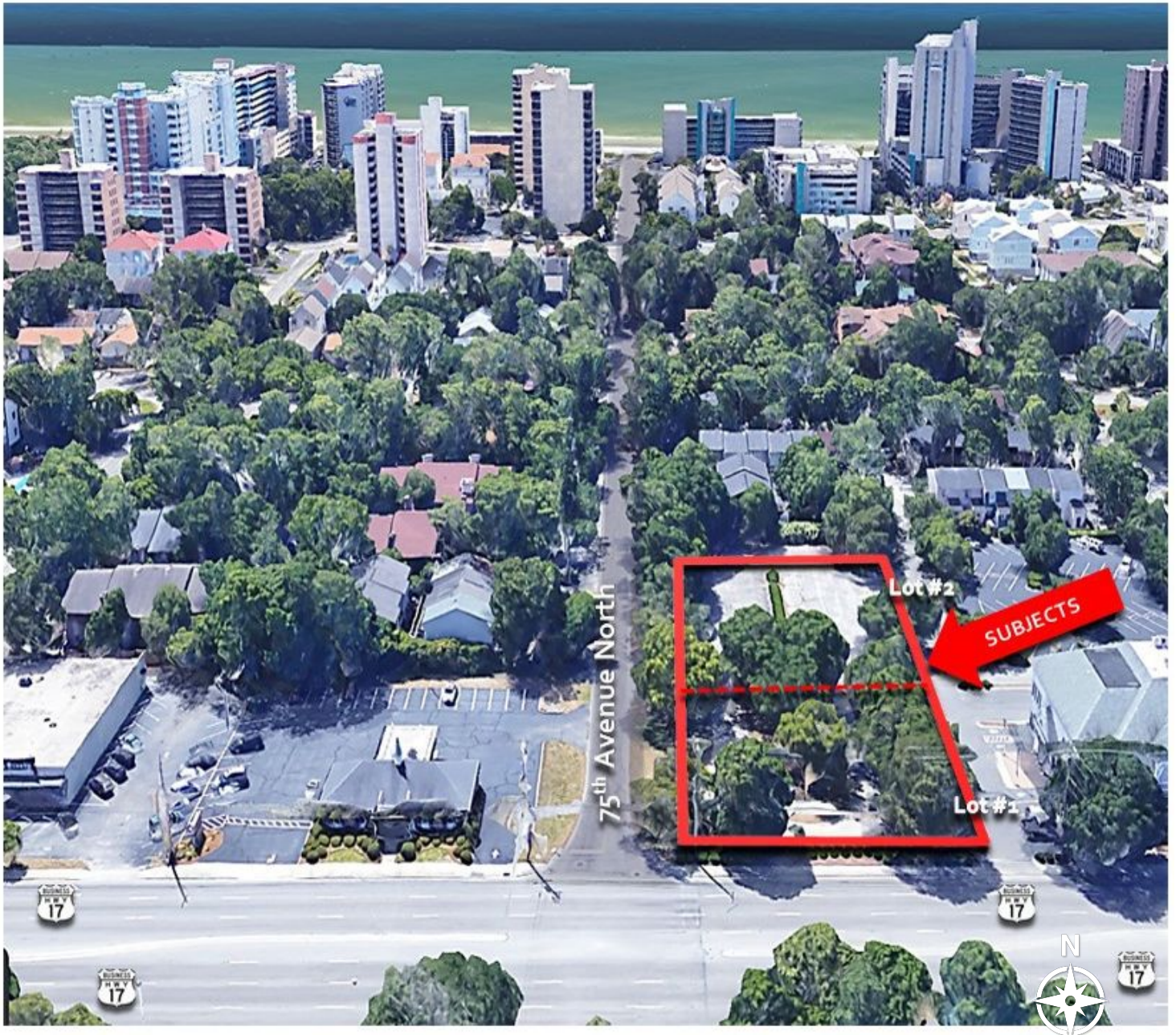
Sale Price:	\$899,000
Available SF:	
Lot Size:	1.05 Acres
Price / Acre:	\$856,190
Zoning:	Mixed Use Medium Density (MU-M) & MultiFamily Residential High Density (RMH)) City of Myrtle Beach, SC.

DREW LANGWAY  
843.626.3400  
drew@keystonecommercial.com



## Muirfield Lots

7450 NORTH KINGS HIGHWAY  
MYRTLE BEACH, SC 29572



DREW LANGWAY  
843.626.3400  
drew@keystonecommercial.com



## Muirfield Lots

7450 NORTH KINGS HIGHWAY  
MYRTLE BEACH, SC 29572

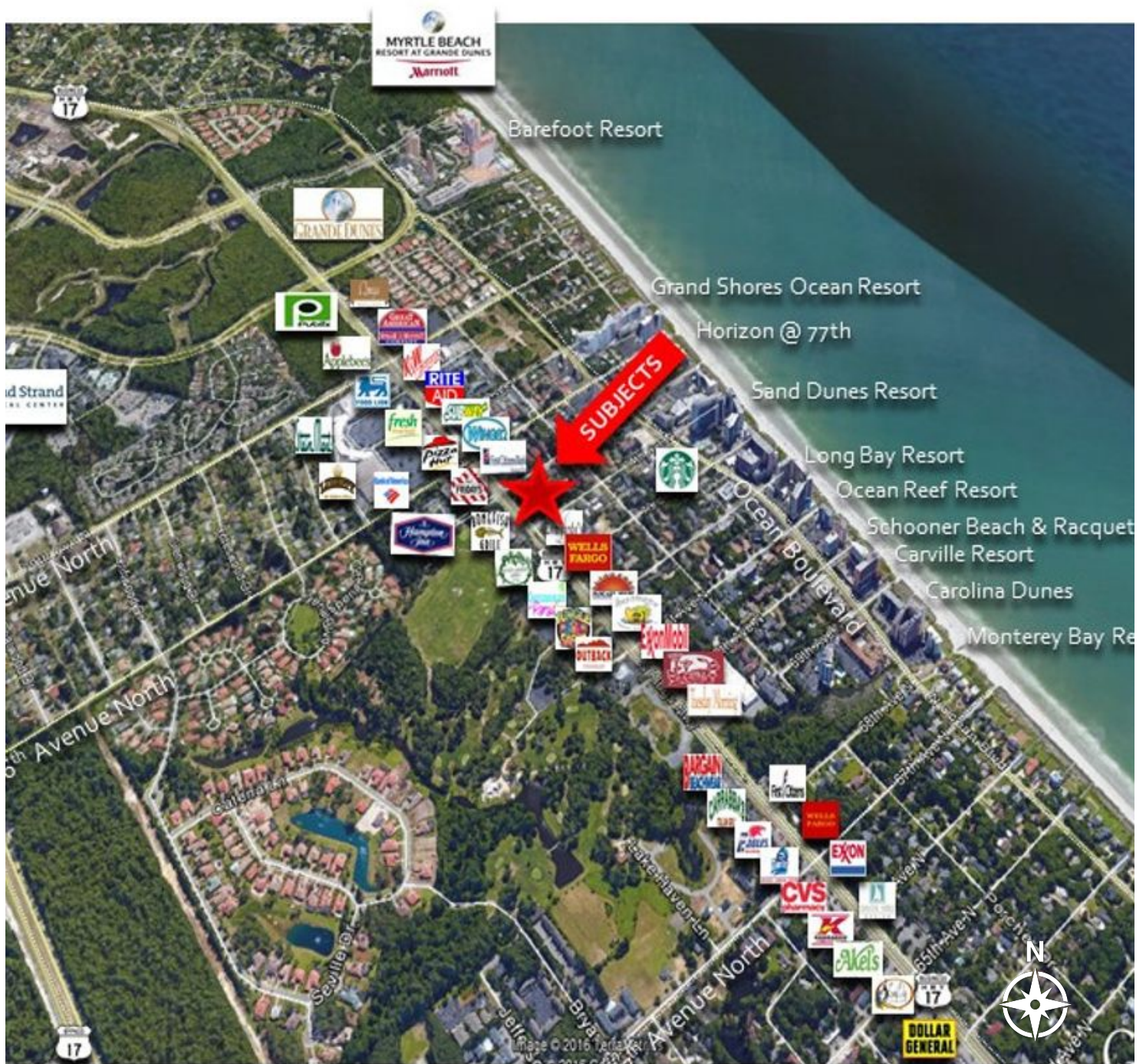


DREW LANGWAY  
843.626.3400  
[drew@keystonecommercial.com](mailto:drew@keystonecommercial.com)



# Muirfield Lots

7450 NORTH KINGS HIGHWAY  
MYRTLE BEACH, SC 29572

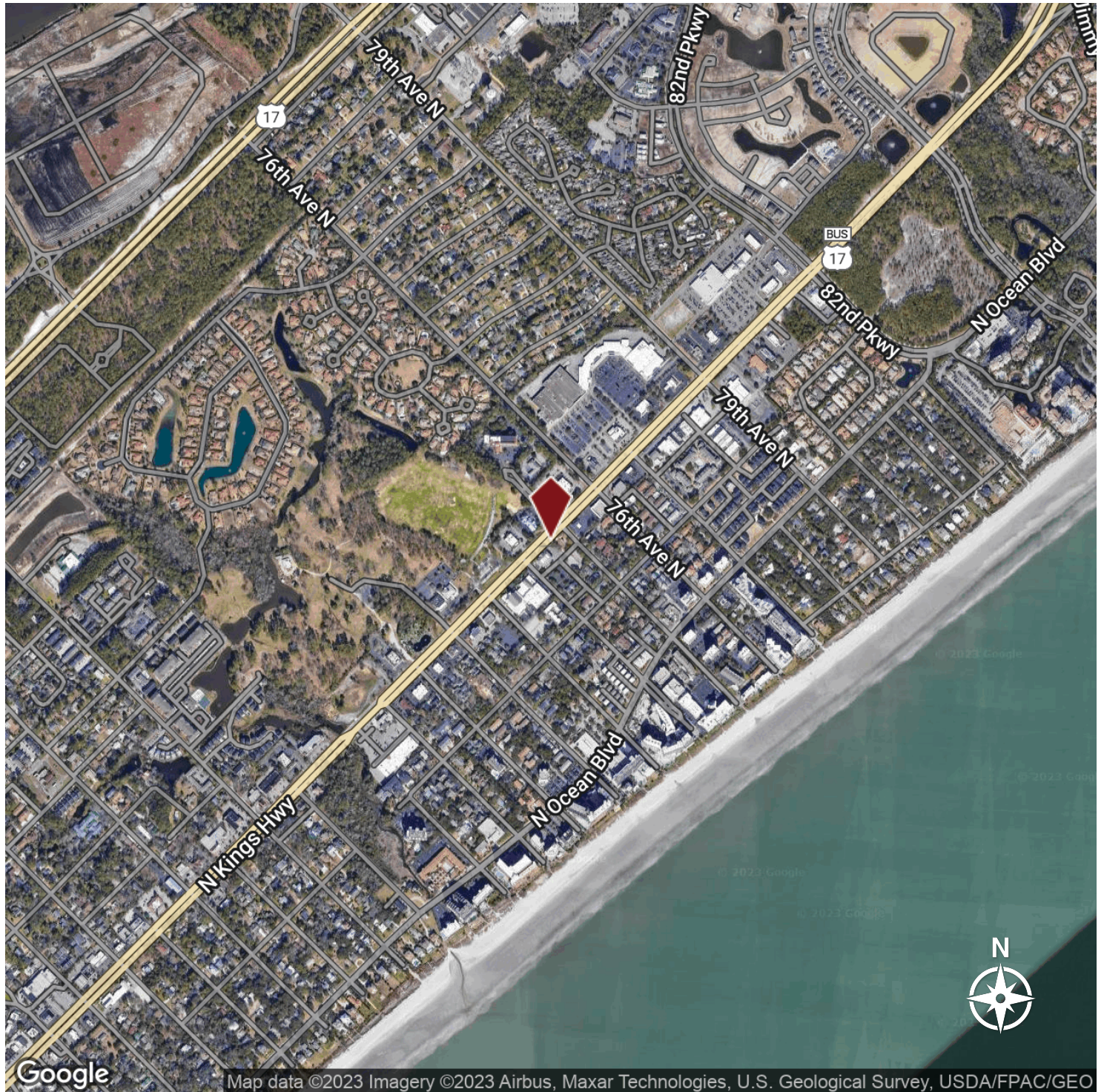


DREW LANGWAY  
843.626.3400  
drew@keystonecommercial.com



# Muirfield Lots

7450 NORTH KINGS HIGHWAY  
MYRTLE BEACH, SC 29572



DREW LANGWAY  
843.626.3400  
drew@keystonecommercial.com



## Myrtle Beach & the Grand Strand

The Grand Strand has some of the most beautiful beaches in the world, ocean and river water sports, over 100 golf courses, 1,500 restaurants, and numerous theatres offering international recording artists and Broadway Shows. The Myrtle Beach area enjoys an outstanding quality of life. The temperate climate, cultural and recreational opportunities, and robust economy continue to draw an increasing number of visitors and people relocating from other areas. Considered one of America's top vacation destinations, the area hosts an estimated 16 million visitors annually. Myrtle Beach is home to Coastal Carolina University and Horry-Georgetown Technical College, and the area has an impressive labor force of professional, technical, and skilled personnel.

### **Beaches**

Hotels, condos, and resorts create a mini-skyline along downtown Myrtle Beach, where the sandy beaches are long and deep, and the crowds are family-oriented. The Myrtle Beach State Park provides more than 300 acres of piney woods and access to a sandy beach; cast your line into the ocean water from a fishing pier.

### **Shopping**

Specialty shops line the pathways of the shopping centers at Barefoot Landing and Broadway at the Beach, and fireworks in the summer lend a festive air. Bargain hunt for brands such as Reebok and Polo Ralph Lauren at Tanger Outlets. Urban critics applaud the work-play-live development at The Market Common, which offers restaurants, a movie theater, and residential homes atop upscale storefronts.

### **Eating and Drinking**

Many major chains and sports-celebrity restaurants are found here, including Hard Rock Café, The House of Blues and Greg Norman's Australian Grill. Away from the chains, look for waterside spots serving fresh local seafood in unvarnished Low Country preparations. Or give decorum a rest and head to, Calvin Gilmore's Carolina Opry which packs in crowds nightly.

### **Attractions**

Renowned for its thrilling entertainment venues and exciting attractions, Myrtle Beach is one of the nation's most sought after tourist destinations. Meet locals on the golf course -- there are more than 100 to choose from. Myrtle Beach Board Walk, 1.2 miles long, named the nation's #3 boardwalk by National Geographic. Myrtle Waves, one of the largest water parks on the east coast. Family Kingdom Amusement Park, a classic seaside amusement park, named #5 best amusement park in the country. Broadway at the Beach, a large entertainment festival complex including the Pavilion Nostalgia Park, Ripley's Aquarium, Magiquest, and Jimmy Buffett's Margaritaville. Also, look for the Skywheel, NASCAR SpeedParks, Wild Water and Wheels, Ocean Water Sports, Alabama Theater and Medieval Times. The list of exciting family friendly entertainment is abundant and is waiting just for you.



## THE REGION

### #1 BEST PLACES TO LIVE IN SOUTH CAROLINA

US News & World Report, 2020

### Ranked #3 Best Places to Live By the Beach in the U.S.

US News & World Report, 2020

### BEST FAMILY BEACH VACATION RANKED #6

US News & World Report, 2020

### Second Fastest Growing Metropolitan Area in the Country

U.S. Census Bureau, 2019


### BEST PLACES TO RETIRE RANKED #11

US News & World Report, 2020

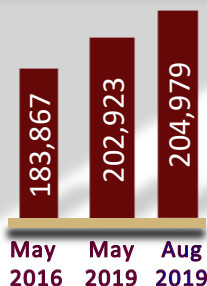
## MYRTLE BEACH, SC.

### Metropolitan Statistical Area

The Grand Strand has some of the most beautiful beaches in the world, ocean and river water sports, over 100 golf courses, 1,500 restaurants, numerous theatres offering international recording artists and Broadway Shows. The Myrtle Beach area enjoys an outstanding quality of life. The temperate climate, cultural and recreational opportunities, and robust economy continue to draw an increasing number of visitors and people relocating from other areas. Considered one of America's top vacation destinations, the area hosts an estimated 16 million visitors annually. Myrtle Beach is home to Coastal Carolina University and Horry-Georgetown Technical College, and the area has an impressive labor force of professional, technical, and skilled personnel.

	2010	2018	2023
Population	376,722	467,292	533,198
<small>U.S. Census Bureau</small>			
Total Households	158,522	196,299	244,089
<small>U.S. Census Bureau</small>			
Avg. Household Income		\$68,058	\$77,206
<small>U.S. Census Bureau</small>			

#### EMPLOYMENT, Bureau of Labor Statistics



MAY 2018:  
3.6%

MAY 2019  
4.1%

UNEMPLOYMENT RATE  
Bureau of Labor Statistics