



7 North Main St

Mount Clemens, Michigan 48043

Property Highlights

- Office/Retail – Redevelopment Opportunity
- Built 1898
- 2-Story 31,906 SF Building
- 0.561 Acres
- Zoning Commercial Downtown District
- Central Business District (CB) Allows for a Wide Range of Commercial, Residential and Mixed-Use Projects
- Located Across from the Courts and County Offices in Downtown Mt. Clemens
- Parcel 05-11-14-209-019
- Available For Sale, Lease or Build to Suit

OFFERING SUMMARY

Sale Price:	Contact Listing Agent(s)
Lot Size:	0.561 Acres
Building Size:	31,906 SF

DEMOGRAPHICS	1 MILE	3 MILES	5 MILES
Total Households	5,597	33,360	77,917
Total Population	12,445	76,698	191,090
Average HH Income	\$47,620	\$56,214	\$64,078



Wendy Acho

Leasing and Sales Associate | 248.563.0739
acho@farbman.com

Nathan Casey

Leasing and Sales Associate | 248.351.4391
casey@farbman.com

Daniel McCleary

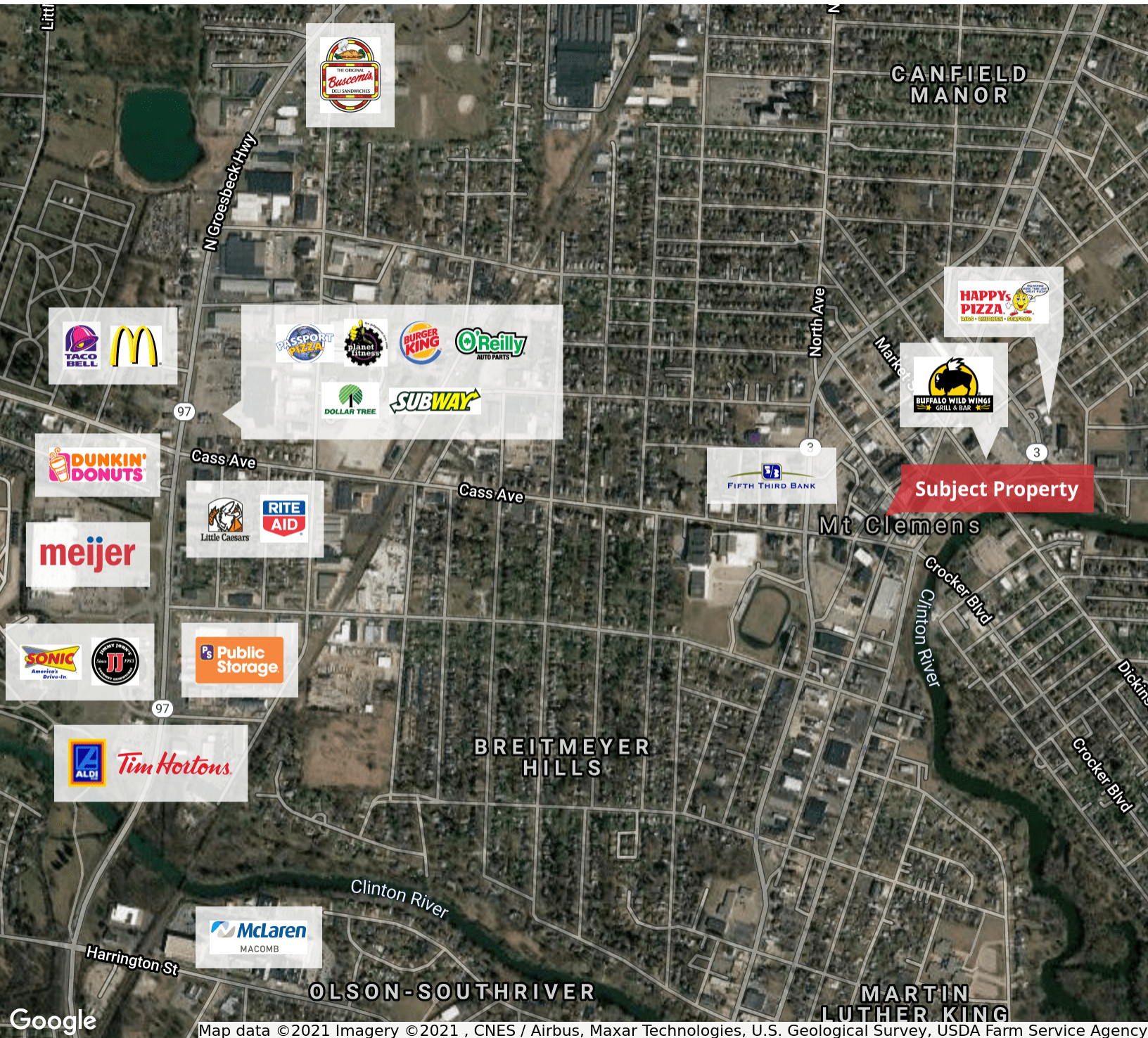
Vice President | 248.351.4384
mccleary@farbman.com



FOR SALE



OFFICE



Map data ©2021 Imagery ©2021 , CNES / Airbus, Maxar Technologies, U.S. Geological Survey, USDA Farm Service Agency



www.naifarbman.com

Wendy Acho

Leasing and Sales Associate | 248.563.0739
acho@farbman.com

Nathan Casey

Leasing and Sales Associate | 248.351.4391
casey@farbman.com

Daniel McCleary

Vice President | 248.351.4384
mccleary@farbman.com

THE INFORMATION CONTAINED HEREIN HAS BEEN GIVEN TO US BY THE OWNER OF THE PROPERTY OR OTHER SOURCES WE DEEM RELIABLE. WE HAVE NO REASON TO DOUBT ITS ACCURACY, BUT WE DO NOT GUARANTEE IT. ALL INFORMATION SHOULD BE VERIFIED PRIOR TO LEASE OR PURCHASE.



FOR SALE



OFFICE



Wendy Acho

Leasing and Sales Associate | 248.563.0739
acho@farbman.com

Nathan Casey

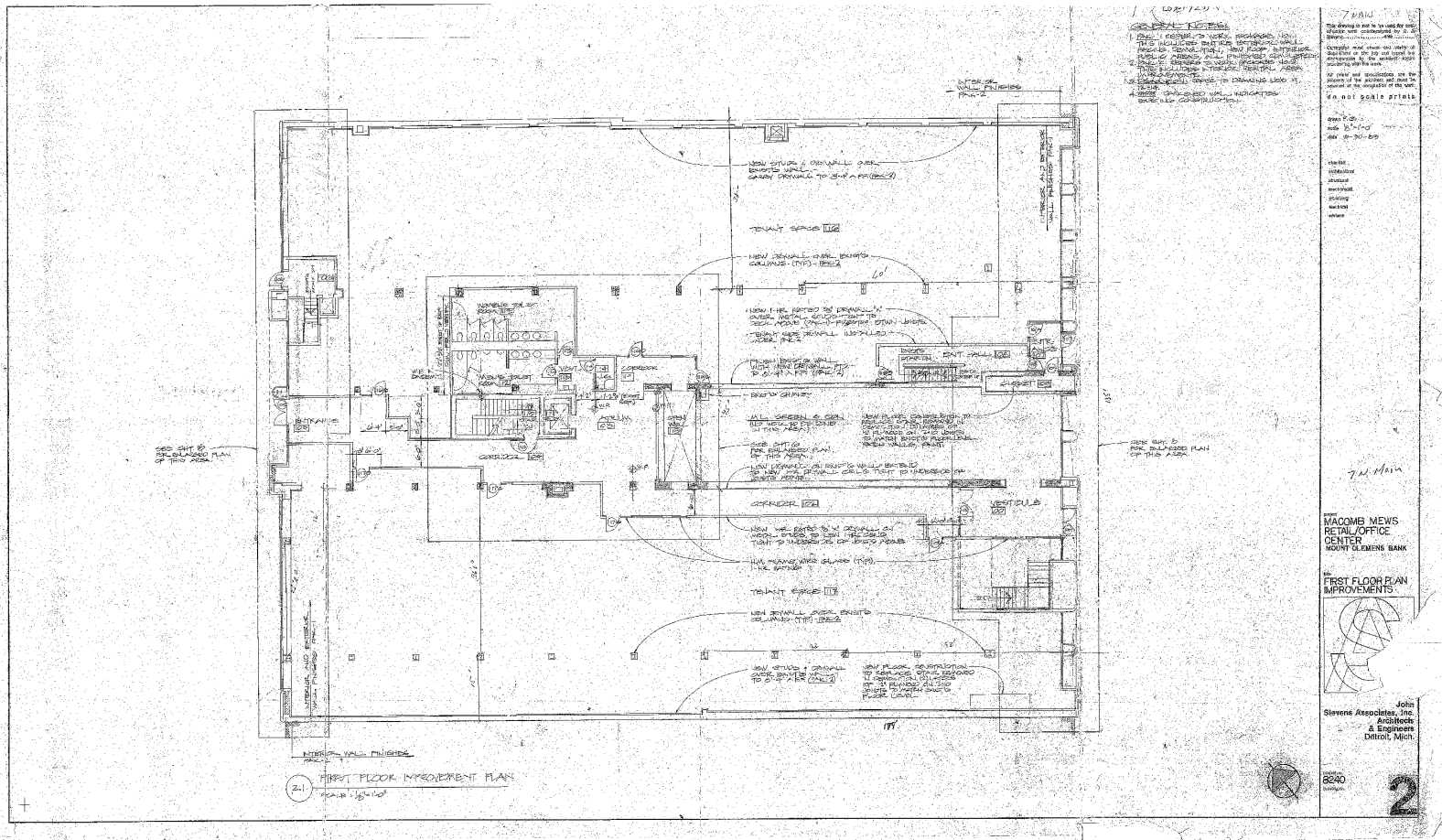
Leasing and Sales Associate | 248.351.4391
casey@farbman.com

Daniel McCleary

Vice President | 248.351.4384
mccleary@farbman.com

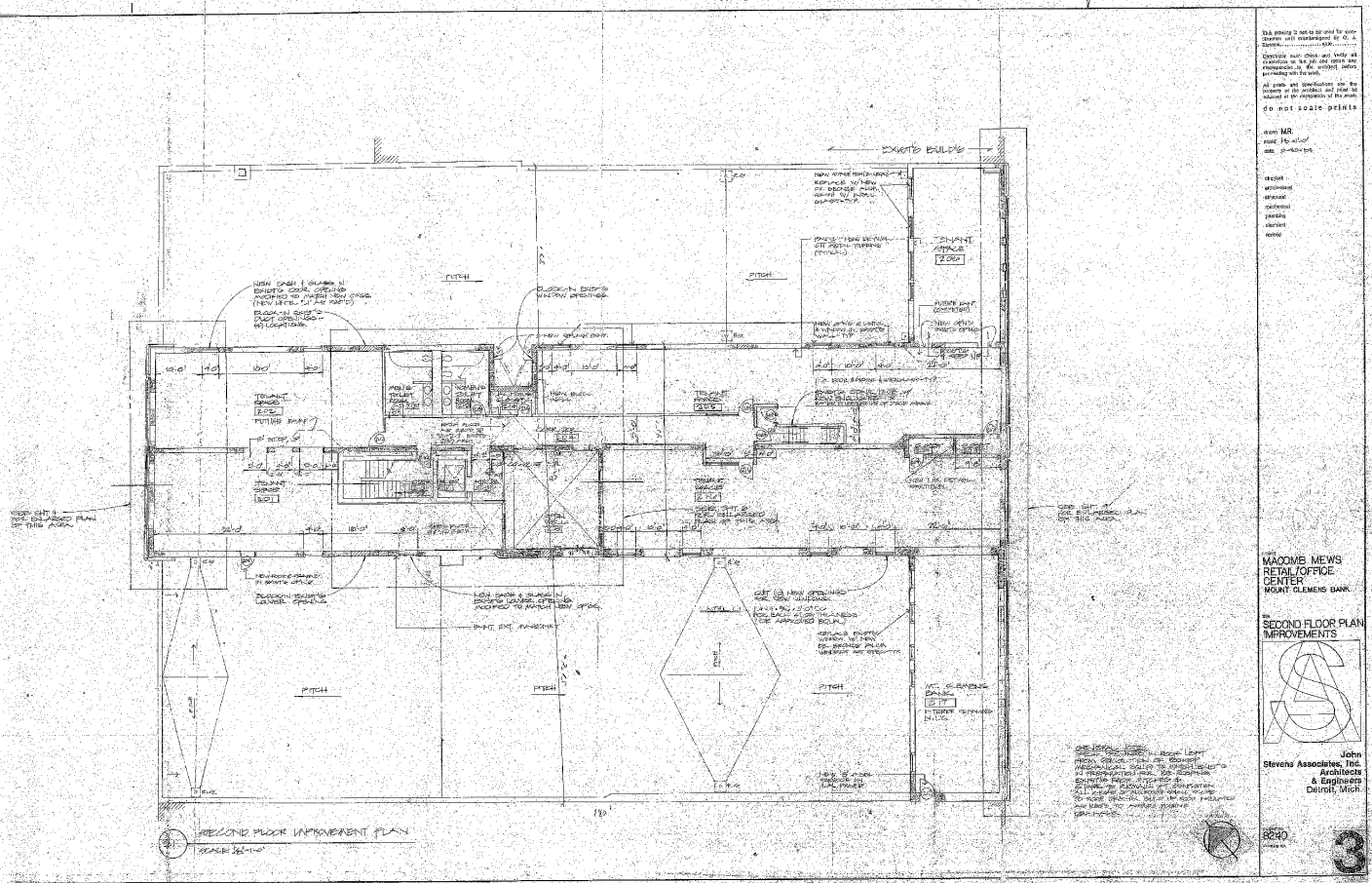


THE INFORMATION CONTAINED HEREIN HAS BEEN GIVEN TO US BY THE OWNER OF THE PROPERTY OR OTHER SOURCES WE DEEM RELIABLE. WE HAVE NO REASON TO DOUBT ITS ACCURACY, BUT WE DO NOT GUARANTEE IT. ALL INFORMATION SHOULD BE VERIFIED PRIOR TO LEASE OR PURCHASE.



Daniel McCleary
Vice President | 248.351.4384
mccleary@farbman.com



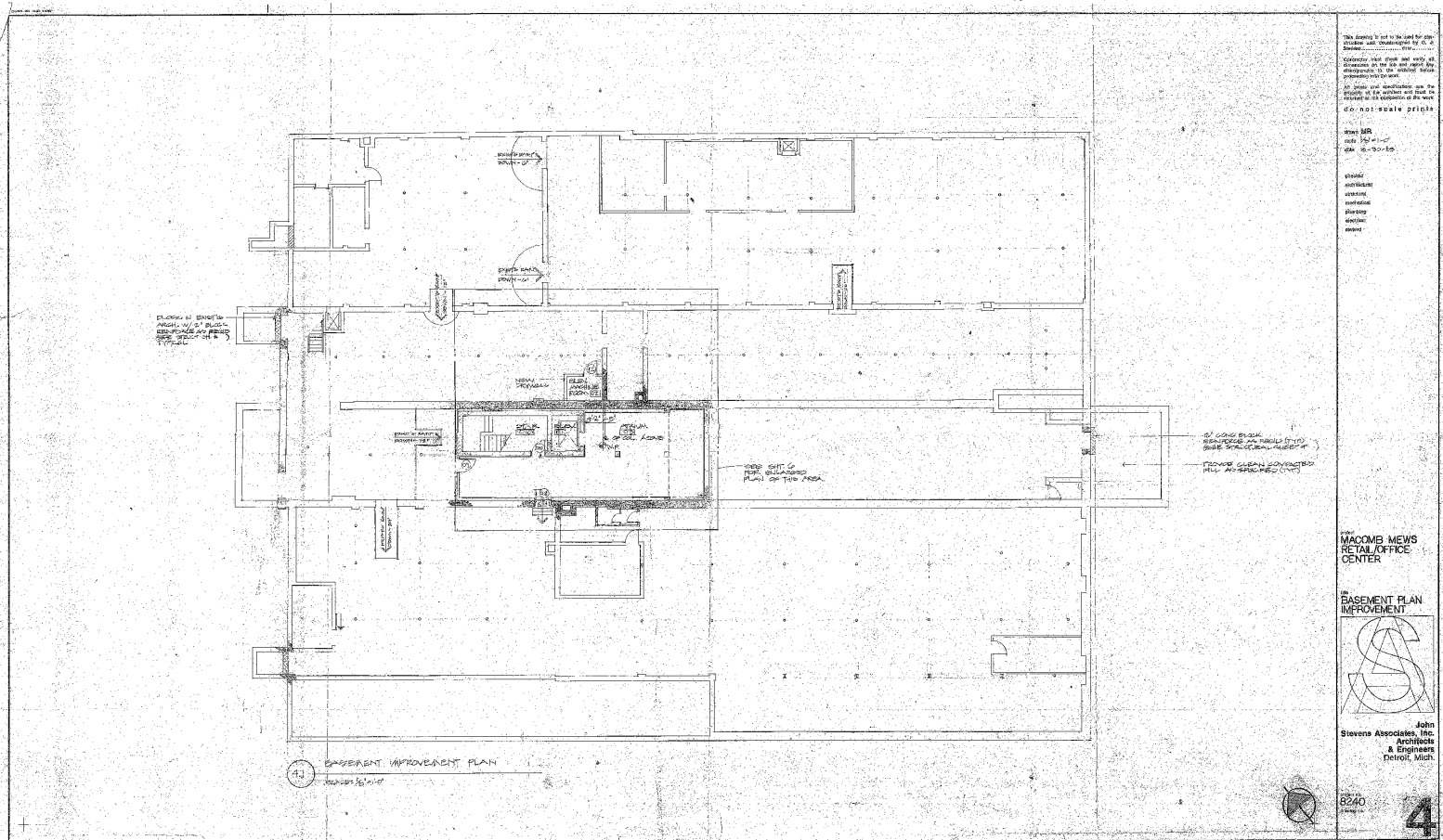


Wendy Acho
Leasing and Sales Associate | 248.563.0739
acho@farbman.com

Nathan Casey
Leasing and Sales Associate | 248.351.4391
casey@farbman.com

Daniel McCleary
Vice President | 248.351.4384
mccleary@farbman.com





Wendy Acho
Leasing and Sales Associate | 248.563.0739
acho@farbman.com

Nathan Casey
Leasing and Sales Associate | 248.351.4391
casey@farbman.com

Daniel McCleary
Vice President | 248.351.4384
mccleary@farbman.com



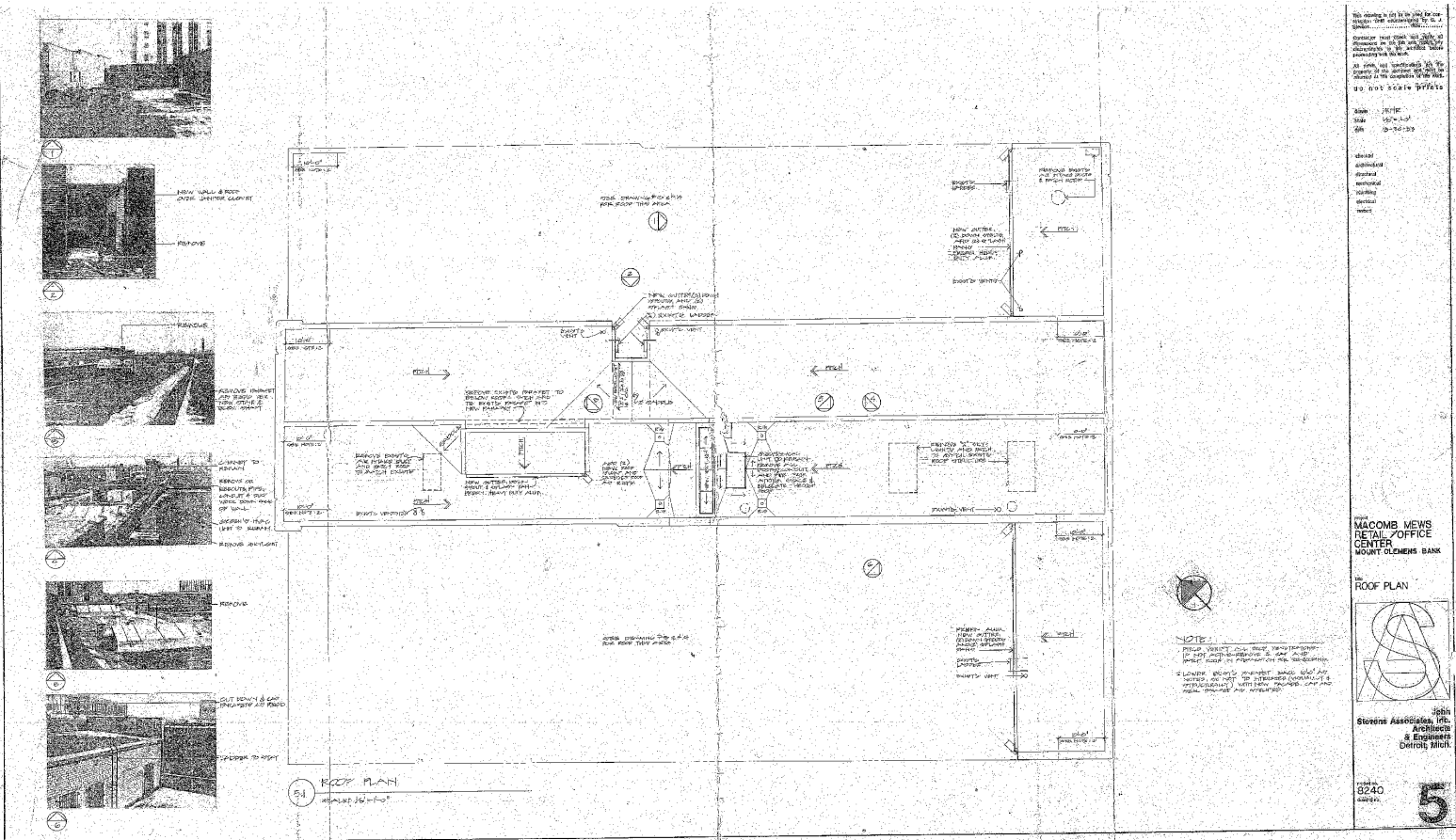
THE INFORMATION CONTAINED HEREIN HAS BEEN GIVEN TO US BY THE OWNER OF THE PROPERTY OR OTHER SOURCES WE DEEM RELIABLE. WE HAVE NO REASON TO DOUBT ITS ACCURACY, BUT WE DO NOT GUARANTEE IT. ALL INFORMATION SHOULD BE VERIFIED PRIOR TO LEASE OR PURCHASE.



FOR SALE



OFFICE

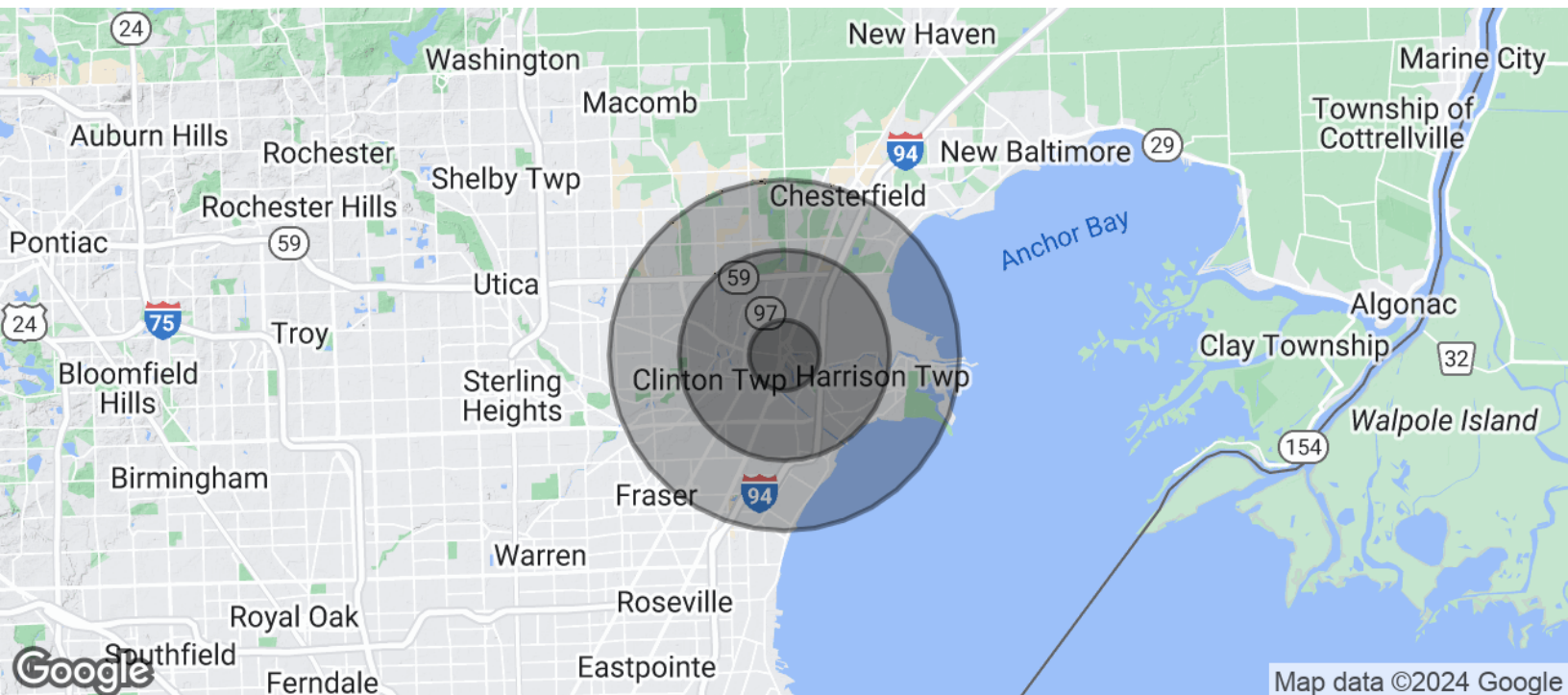


Wendy Acho
Leasing and Sales Associate | 248.563.0739
acho@farbman.com

Nathan Casey
Leasing and Sales Associate | 248.351.4391
casey@farbman.com

Daniel McCleary
Vice President | 248.351.4384
mccleary@farbman.com





POPULATION	1 MILE	3 MILES	5 MILES
Total Population	12,445	76,698	191,090
Average age	39.8	39.4	39.1
Average age (Male)	39.5	37.8	37.8
Average age (Female)	39.7	40.6	40.1
HOUSEHOLDS & INCOME	1 MILE	3 MILES	5 MILES
Total households	5,597	33,360	77,917
# of persons per HH	2.2	2.3	2.5
Average HH income	\$47,620	\$56,214	\$64,078
Average house value	\$101,821	\$146,164	\$167,215

* Demographic data derived from 2020 ACS - US Census



Wendy Acho

Leasing and Sales Associate | 248.563.0739
acho@farbman.com

Nathan Casey

Leasing and Sales Associate | 248.351.4391
casey@farbman.com

Daniel McCleary

Vice President | 248.351.4384
mccleary@farbman.com

THE INFORMATION CONTAINED HEREIN HAS BEEN GIVEN TO US BY THE OWNER OF THE PROPERTY OR OTHER SOURCES WE DEEM RELIABLE. WE HAVE NO REASON TO DOUBT ITS ACCURACY, BUT WE DO NOT GUARANTEE IT. ALL INFORMATION SHOULD BE VERIFIED PRIOR TO LEASE OR PURCHASE.