

2900 E. 96TH STREET

INDIANAPOLIS, IN 46240



TCN
WORLDWIDE
REAL ESTATE SERVICES

FOR LEASE



PROPERTY DESCRIPTION

Professional office suite for lease in the 96th Street Office Campus. New building owners located in Suite A are looking for the right Tenant to occupy Suite B. Beautiful interior finishes - neutral pallet, white trim, natural stone tile. Current configuration includes bright and open lobby, conference room, 7 private offices, kitchen, and restroom. Excellent location with easy access to I-465 and E. 96th Street.

PROPERTY HIGHLIGHTS

OFFERING SUMMARY

Lease Rate:	N/A
Available SF:	
Lot Size:	0.17 Acres
Building Size:	6,000 SF

PETE ALVEAL

317.454.7171

palveal@premiercres.com

PREMIER COMMERCIAL | TCN WORLDWIDE 9785 Crosspoint Blvd., Ste. 118 | Indianapolis, IN 46256 | 317.454.7171 | www.premiercres.com

The information contained herein has been obtained from sources we deem reliable. Although we have no reason to doubt its accuracy, we do not guarantee the information is correct or complete. Marketing materials & documents alike may only be reproduced in their entirety, without modification or deletion. Photos are the property of their respective Owners, & use of these without the written consent of said Owner is prohibited. © 2023. Premier Commercial Real Estate Services, LLC

2900 E. 96TH STREET

INDIANAPOLIS, IN 46240



FOR LEASE



PETE ALVEAL

317.454.7171

palveal@premiercres.com

PREMIER COMMERCIAL | TCN WORLDWIDE 9785 Crosspoint Blvd., Ste. 118 | Indianapolis, IN 46256 | 317.454.7171 | www.premiercres.com

The information contained herein has been obtained from sources we deem reliable. Although we have no reason to doubt its accuracy, we do not guarantee the information is correct or complete. Marketing materials & documents alike may only be reproduced in their entirety, without modification or deletion. Photos are the property of their respective Owners, & use of these without the written consent of said Owner is prohibited. © 2023. Premier Commercial Real Estate Services, LLC

2900 E. 96TH STREET

INDIANAPOLIS, IN 46240



FOR LEASE



PETE ALVEAL

317.454.7171

palveal@premiercres.com

PREMIER COMMERCIAL | TCN WORLDWIDE 9785 Crosspoint Blvd., Ste. 118 | Indianapolis, IN 46256 | 317.454.7171 | www.premiercres.com

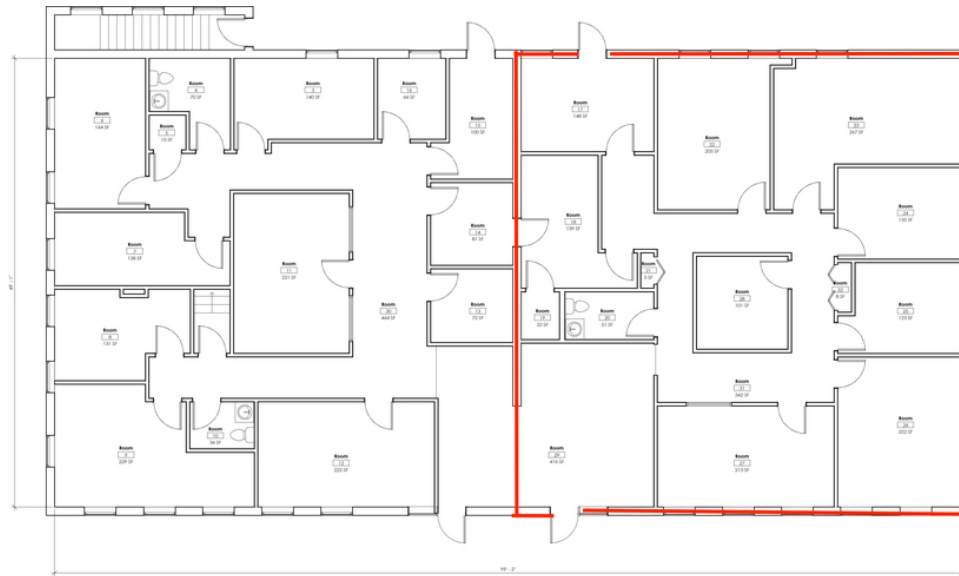
The information contained herein has been obtained from sources we deem reliable. Although we have no reason to doubt its accuracy, we do not guarantee the information is correct or complete. Marketing materials & documents alike may only be reproduced in their entirety, without modification or deletion. Photos are the property of their respective Owners, & use of these without the written consent of said Owner is prohibited. © 2023. Premier Commercial Real Estate Services, LLC

2900 E. 96TH STREET

INDIANAPOLIS, IN 46240



FOR LEASE

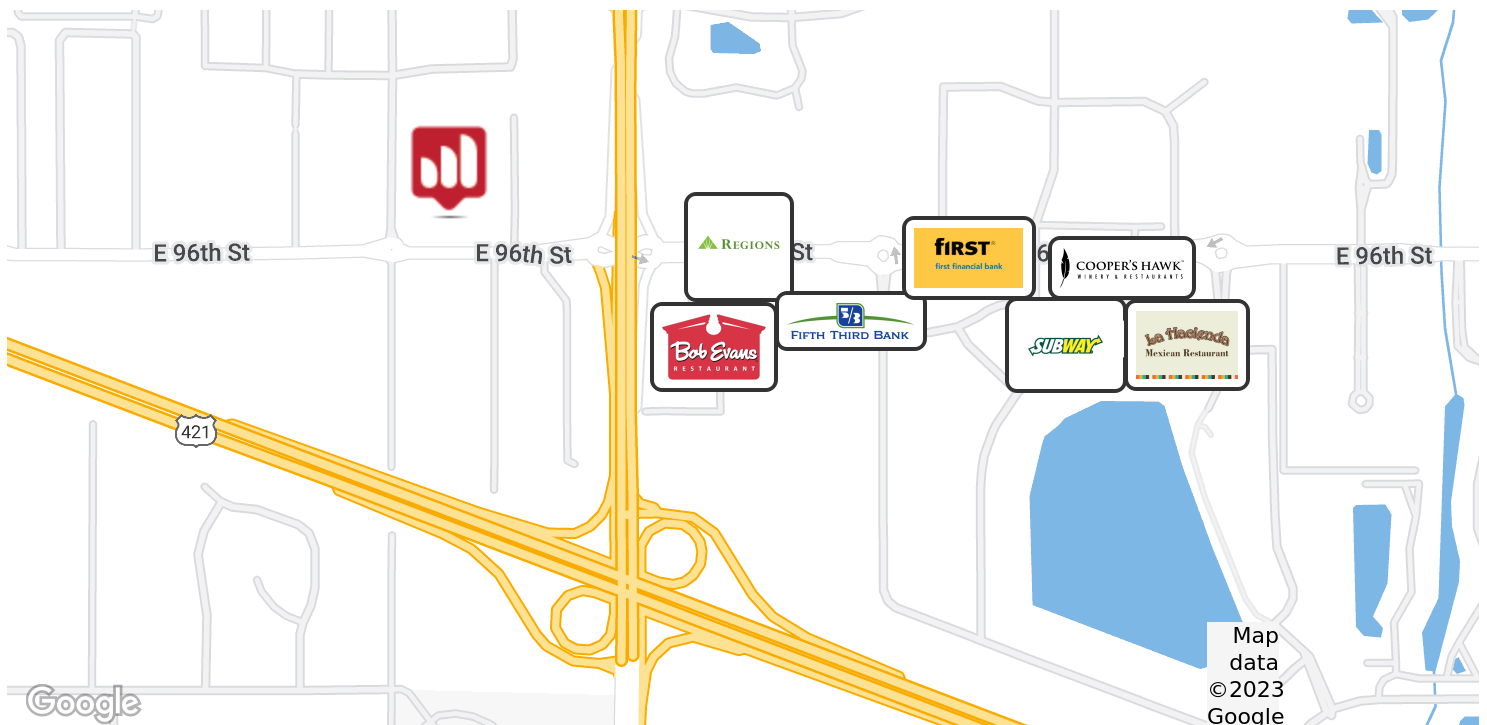


Suite B - 2,500 SF

2900 E. 96th Street | Indianapolis, IN 46240



03/28/19
0190041-10000



PETE ALVEAL

317.454.7171

palveal@premiercres.com

PREMIER COMMERCIAL | TCN WORLDWIDE 9785 Crosspoint Blvd., Ste. 118 | Indianapolis, IN 46256 | 317.454.7171 | www.premiercres.com

The information contained herein has been obtained from sources we deem reliable. Although we have no reason to doubt its accuracy, we do not guarantee the information is correct or complete. Marketing materials & documents alike may only be reproduced in their entirety, without modification or deletion. Photos are the property of their respective Owners, & use of these without the written consent of said Owner is prohibited. © 2023. Premier Commercial Real Estate Services, LLC