

DOWNTOWN HAMMOND OFFICE/RETAIL

112 S Holly, Hammond, LA 70403



PROPERTY OVERVIEW

Office/retail property with additional income in downtown Hammond! 6300 SF 2-story building with 2 suites on ground floor plus 2 renovated apartments upstairs with rooftop terrace. Office suites are 1771 SF and 2650 SF. The first features 5 private offices, 2 bathrooms, conference room and kitchen/break room. The second includes 2 large open rooms, storage areas and 2 offices in rear. Excellent location and convenient to I-12, I-55 and Highway 190. Office suites also for lease. Apartment income is \$2000/month.

PROPERTY HIGHLIGHTS

- 2 ground-floor office suites - 1771 SF and 2650 SF
- 2 upstairs apartments with rooftop terrace
- Great location, offices also for lease
- Excellent location, convenient to downtown Hammond

SALE PRICE: \$650,000

LOT SIZE: 5,625 SF

BUILDING SIZE: 6,300 SF

ZONING: Commercial

SUBMARKET: Northshore New Orleans - Hammond

BROCHURE DATE: 1/30/2020

KW COMMERCIAL
1522 W. Causeway Approach
Mandeville, LA 70471

CORDELL EUSTIS GROUP
Brent Cordell
O: 985.727.7000
C: 985.373.6417
bcordell@kw.com

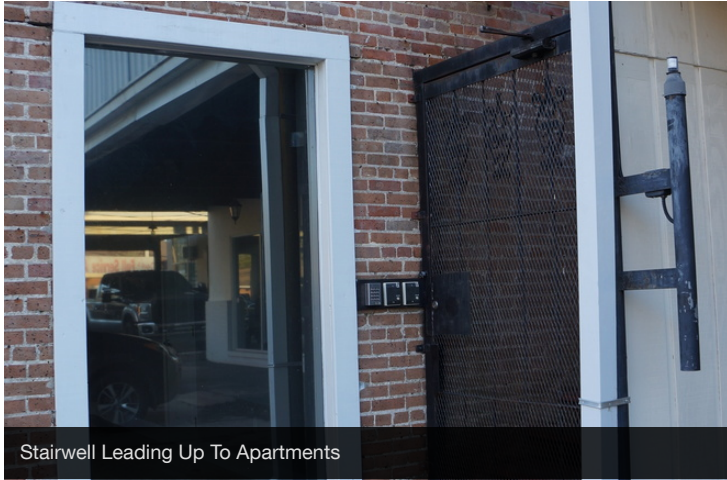
We obtained the information above from sources we believe to be reliable. However, we have not verified its accuracy and make no guarantee, warranty or representation about it. It is submitted subject to the possibility of errors, omissions, change of price, rental or other conditions, prior sale, lease or financing, or withdrawal without notice. We include projections, opinions, assumptions or estimates for example only, and they may not represent current or future performance of the property. You and your tax and legal advisors should conduct your own investigation of the property and transaction.

Each Office Independently Owned and Operated kwcommercial.com

OFFICE FOR SALE

DOWNTOWN HAMMOND OFFICE/RETAIL

112 S Holly, Hammond, LA 70403



Stairwell Leading Up To Apartments



Apartment Rooftop Terrace



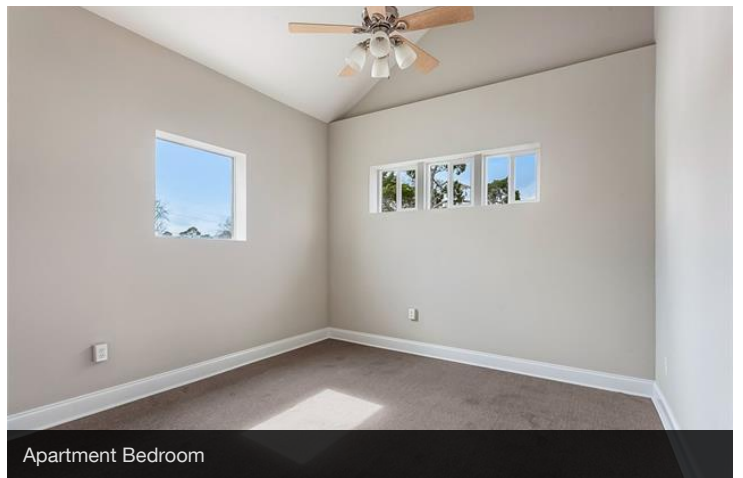
Apartment Living Interior



Apartment Kitchen



Apartment Kitchen



Apartment Bedroom

KW COMMERCIAL
1522 W. Causeway Approach
Mandeville, LA 70471

CORDELL EUSTIS GROUP
Brent Cordell
O: 985.727.7000
C: 985.373.6417
bcordell@kw.com

We obtained the information above from sources we believe to be reliable. However, we have not verified its accuracy and make no guarantee, warranty or representation about it. It is submitted subject to the possibility of errors, omissions, change of price, rental or other conditions, prior sale, lease or financing, or withdrawal without notice. We include projections, opinions, assumptions or estimates for example only, and they may not represent current or future performance of the property. You and your tax and legal advisors should conduct your own investigation of the property and transaction.

Each Office Independently Owned and Operated kwcommercial.com

OFFICE FOR SALE

DOWNTOWN HAMMOND OFFICE/RETAIL

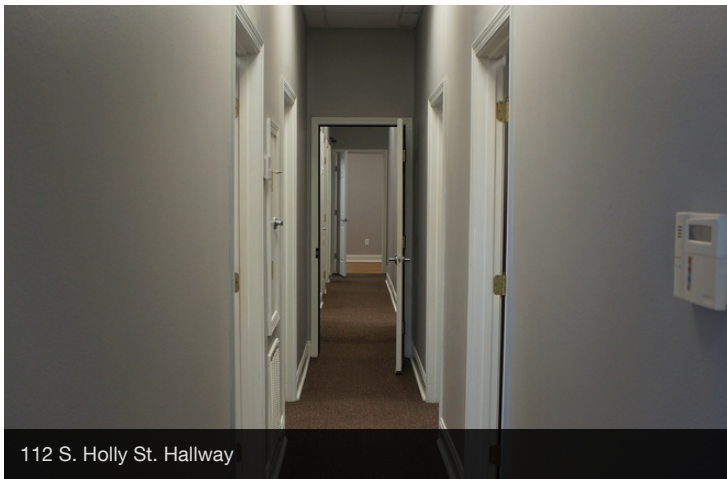
112 S Holly, Hammond, LA 70403



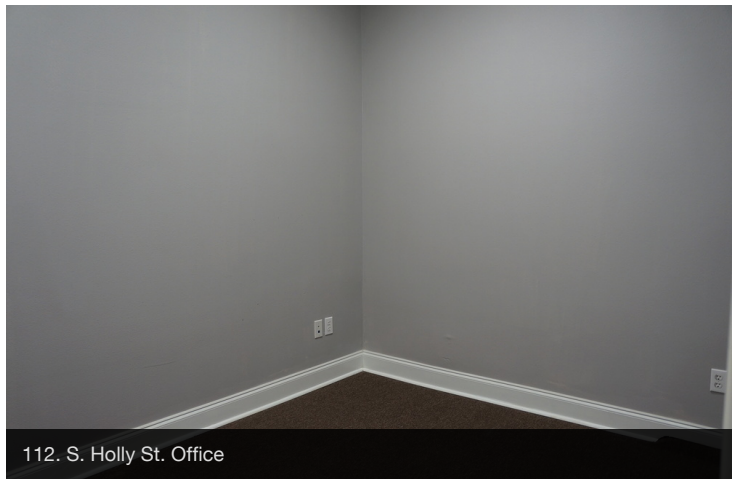
112 S. Holly St. Exterior



112 S. Holly St. Entry Way/Reception



112 S. Holly St. Hallway



112 S. Holly St. Office



112 S. Holly St. Kitchen/Break Room



112 S. Holly St. Conference Room or Large Office

KW COMMERCIAL
1522 W. Causeway Approach
Mandeville, LA 70471

CORDELL EUSTIS GROUP
Brent Cordell
O: 985.727.7000
C: 985.373.6417
bcordell@kw.com

We obtained the information above from sources we believe to be reliable. However, we have not verified its accuracy and make no guarantee, warranty or representation about it. It is submitted subject to the possibility of errors, omissions, change of price, rental or other conditions, prior sale, lease or financing, or withdrawal without notice. We include projections, opinions, assumptions or estimates for example only, and they may not represent current or future performance of the property. You and your tax and legal advisors should conduct your own investigation of the property and transaction.

Each Office Independently Owned and Operated kwcommercial.com

OFFICE FOR SALE

DOWNTOWN HAMMOND OFFICE/RETAIL

112 S Holly, Hammond, LA 70403



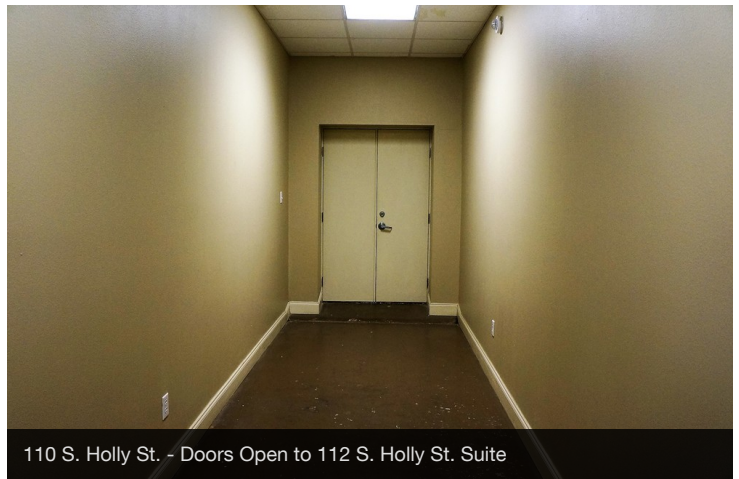
110 S. Holly St. Exterior



110 S. Holly St. Large Open Space



110 S. Holly St. Large Open Space



110 S. Holly St. - Doors Open to 112 S. Holly St. Suite



110 S. Holly St. Office



110 S. Holly St. Office

KW COMMERCIAL
1522 W. Causeway Approach
Mandeville, LA 70471

CORDELL EUSTIS GROUP
Brent Cordell
O: 985.727.7000
C: 985.373.6417
bcordell@kw.com

We obtained the information above from sources we believe to be reliable. However, we have not verified its accuracy and make no guarantee, warranty or representation about it. It is submitted subject to the possibility of errors, omissions, change of price, rental or other conditions, prior sale, lease or financing, or withdrawal without notice. We include projections, opinions, assumptions or estimates for example only, and they may not represent current or future performance of the property. You and your tax and legal advisors should conduct your own investigation of the property and transaction.

Each Office Independently Owned and Operated kwcommercial.com

OFFICE FOR SALE

DOWNTOWN HAMMOND OFFICE/RETAIL

112 S Holly, Hammond, LA 70403

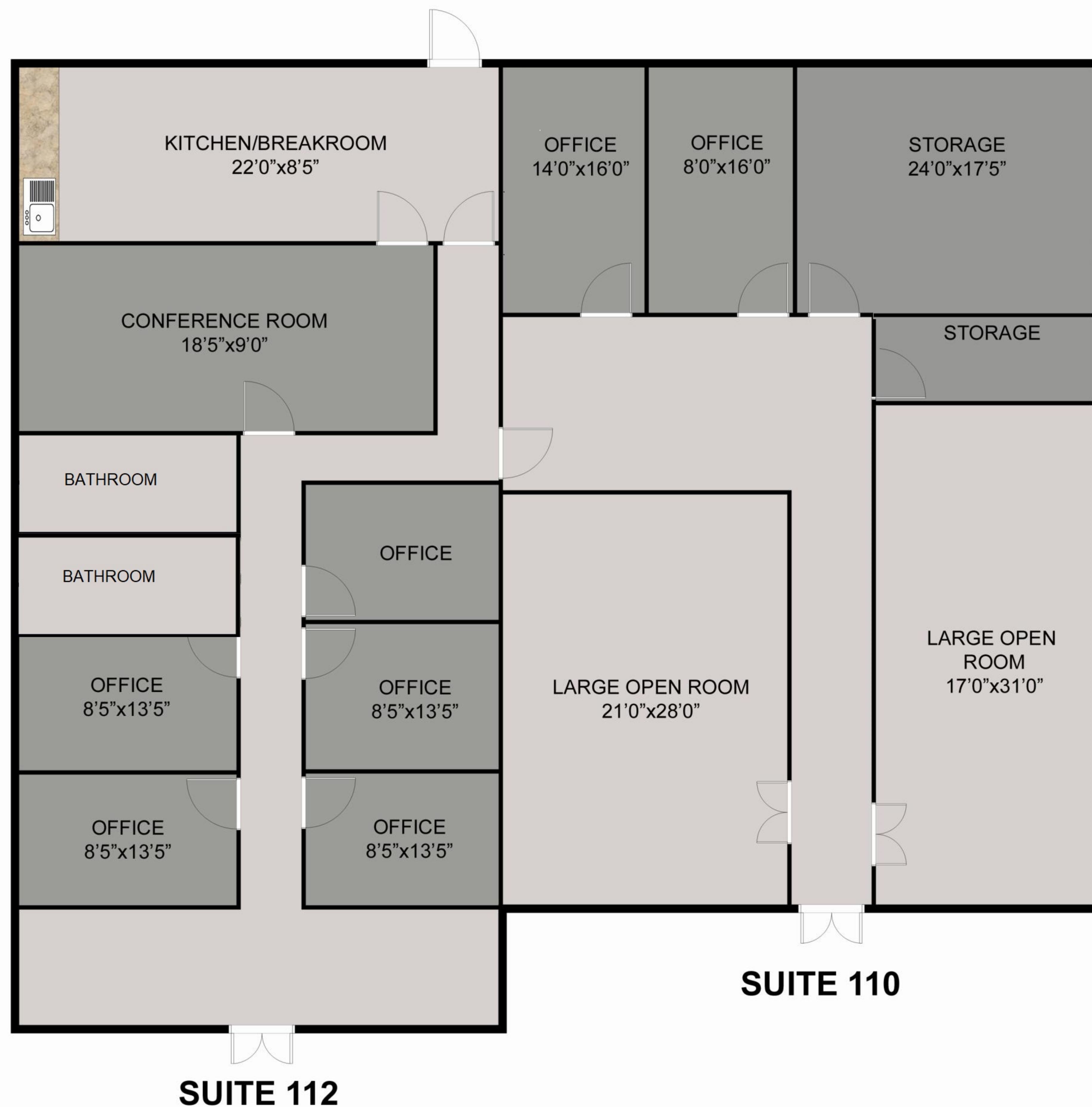


KW COMMERCIAL
1522 W. Causeway Approach
Mandeville, LA 70471

CORDELL EUSTIS GROUP
Brent Cordell
O: 985.727.7000
C: 985.373.6417
bcordell@kw.com

We obtained the information above from sources we believe to be reliable. However, we have not verified its accuracy and make no guarantee, warranty or representation about it. It is submitted subject to the possibility of errors, omissions, change of price, rental or other conditions, prior sale, lease or financing, or withdrawal without notice. We include projections, opinions, assumptions or estimates for example only, and they may not represent current or future performance of the property. You and your tax and legal advisors should conduct your own investigation of the property and transaction.

Each Office Independently Owned and Operated kwcommercial.com



This floor plan including furniture, fixture measurements and dimensions are approximate and for illustrative purposes only. Boxbrownie.com gives no guarantee, warranty or representation as to the accuracy and layout. All enquiries must be directed to the agent, vendor or party representing this floor plan.

112S. HOLLY : 1,771 SF
 110S. HOLLY : 2,650 SF
 TOTAL : 4,421 SF

110-112 S. Holly St., Hammond, LA 70403

DOWNTOWN HAMMOND OFFICE/RETAIL

112 S Holly, Hammond, LA 70403



KW COMMERCIAL
1522 W. Causeway Approach
Mandeville, LA 70471

CORDELL EUSTIS GROUP
Brent Cordell
O: 985.727.7000
C: 985.373.6417
bcordell@kw.com

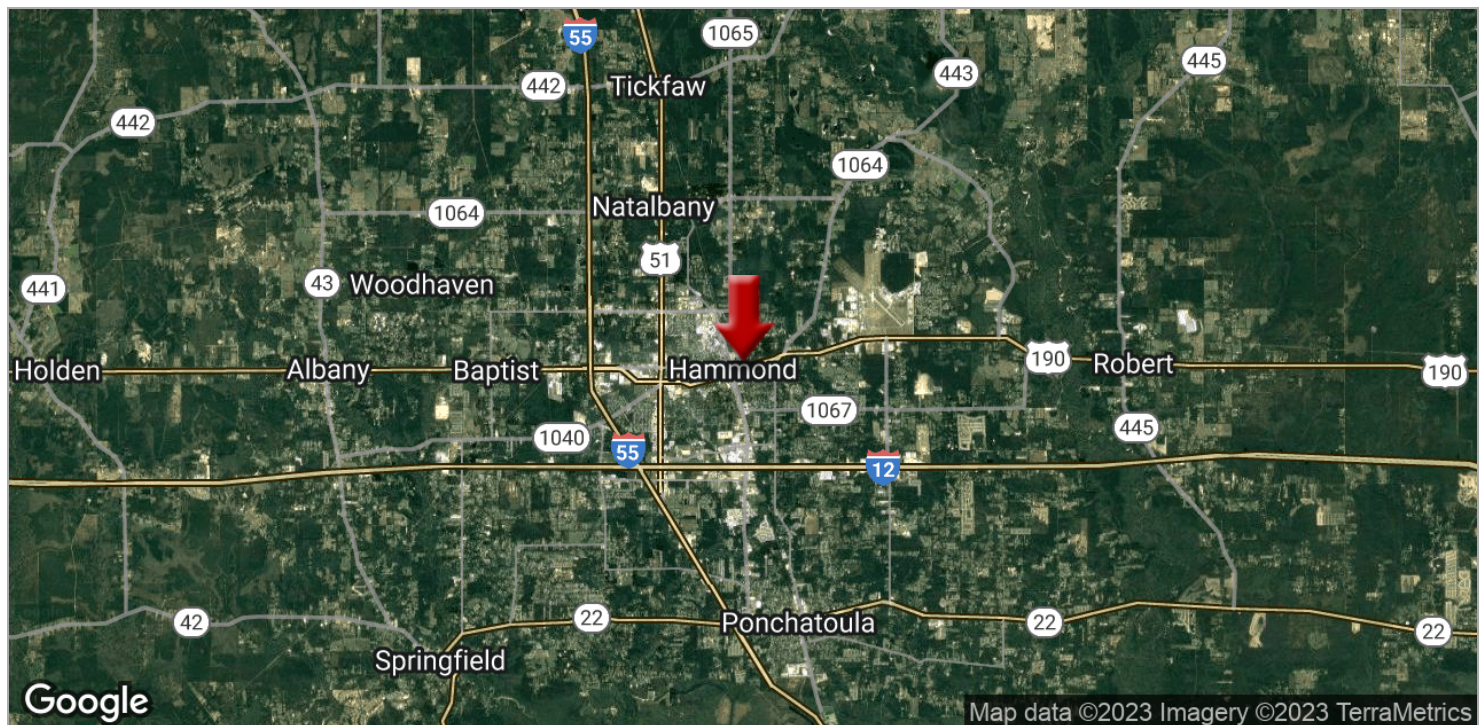
We obtained the information above from sources we believe to be reliable. However, we have not verified its accuracy and make no guarantee, warranty or representation about it. It is submitted subject to the possibility of errors, omissions, change of price, rental or other conditions, prior sale, lease or financing, or withdrawal without notice. We include projections, opinions, assumptions or estimates for example only, and they may not represent current or future performance of the property. You and your tax and legal advisors should conduct your own investigation of the property and transaction.

Each Office Independently Owned and Operated kwcommercial.com

OFFICE FOR SALE

DOWNTOWN HAMMOND OFFICE/RETAIL

112 S Holly, Hammond, LA 70403



KW COMMERCIAL
1522 W. Causeway Approach
Mandeville, LA 70471

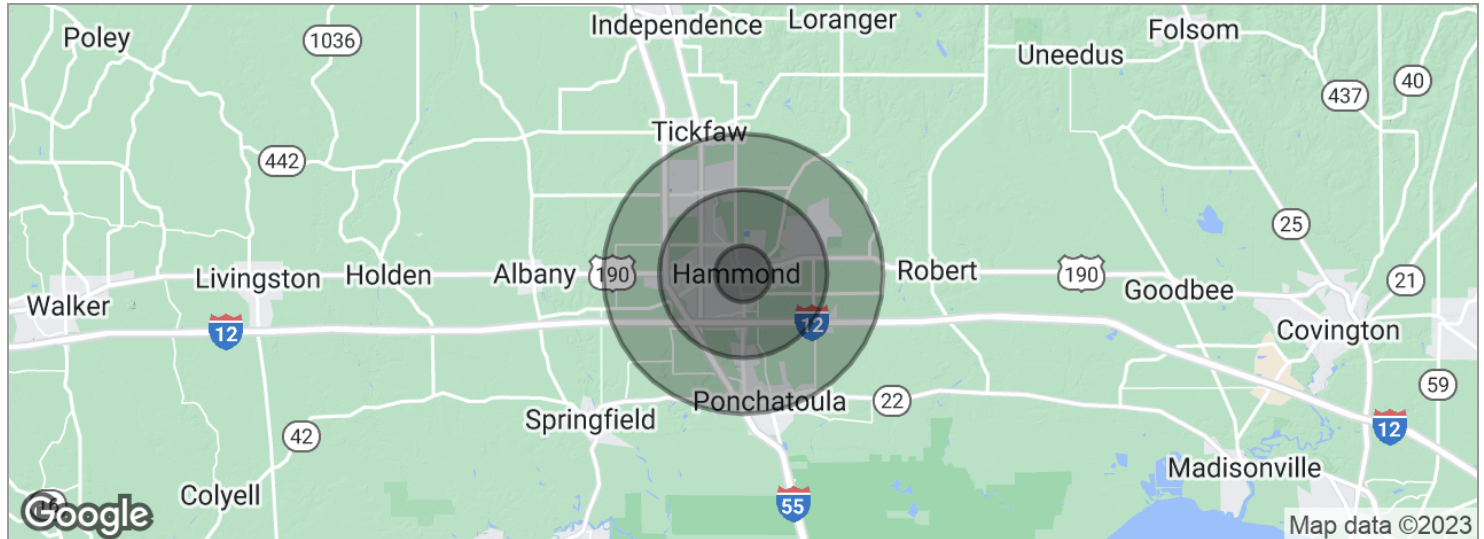
CORDELL EUSTIS GROUP
Brent Cordell
O: 985.727.7000
C: 985.373.6417
bcordell@kw.com

We obtained the information above from sources we believe to be reliable. However, we have not verified its accuracy and make no guarantee, warranty or representation about it. It is submitted subject to the possibility of errors, omissions, change of price, rental or other conditions, prior sale, lease or financing, or withdrawal without notice. We include projections, opinions, assumptions or estimates for example only, and they may not represent current or future performance of the property. You and your tax and legal advisors should conduct your own investigation of the property and transaction.

Each Office Independently Owned and Operated kwcommercial.com

DOWNTOWN HAMMOND OFFICE/RETAIL

112 S Holly, Hammond, LA 70403



POPULATION	1 MILE	3 MILES	5 MILES
Total population	6,642	26,085	48,899
Median age	32.3	31.5	32.2
Median age (male)	27.1	29.2	31.1
Median age (Female)	36.4	32.9	32.9
HOUSEHOLDS & INCOME	1 MILE	3 MILES	5 MILES
Total households	2,548	9,928	18,435
# of persons per HH	2.6	2.6	2.7
Average HH income	\$44,736	\$50,390	\$54,606
Average house value		\$147,511	\$167,840

* Demographic data derived from 2020 ACS - US Census

KW COMMERCIAL
1522 W. Causeway Approach
Mandeville, LA 70471

CORDELL EUSTIS GROUP
Brent Cordell
O: 985.727.7000
C: 985.373.6417
bcordell@kw.com

We obtained the information above from sources we believe to be reliable. However, we have not verified its accuracy and make no guarantee, warranty or representation about it. It is submitted subject to the possibility of errors, omissions, change of price, rental or other conditions, prior sale, lease or financing, or withdrawal without notice. We include projections, opinions, assumptions or estimates for example only, and they may not represent current or future performance of the property. You and your tax and legal advisors should conduct your own investigation of the property and transaction.

Each Office Independently Owned and Operated kwcommercial.com