

## EXECUTIVE SUMMARY

# ATKINS

COMMERCIAL PROPERTIES

## LAND FOR SALE

**1.04 ACRES NEAR BOBBY JONES EXPRESSWAY**  
3628 WRIGHTSBORO ROAD, AUGUSTA, GA 30909



### OFFERING SUMMARY

Sale Price:	\$89,900
Lot Size:	1.04 Acres
Price / Acre:	\$86,442

### PROPERTY OVERVIEW

This 1.04 acre Lot sits at the Corner of Wrightsboro Road. and Old Wrightsboro Road and has frontage on both roads. Great exposure and visibility with high traffic counts. The lot is just a few hundred yards from Ferguson Kitchen and Bath Showroom and Mingledorff's HVAC Supply.

### PROPERTY HIGHLIGHTS

- 1.04 Acres
- Located at Corner of Wrightsboro Road and Old Wrightsboro Road
- Great Exposure and Visibility
- High Traffic Counts

### For More Information:

**Scott A. Atkins, SIOR, CCIM**

President

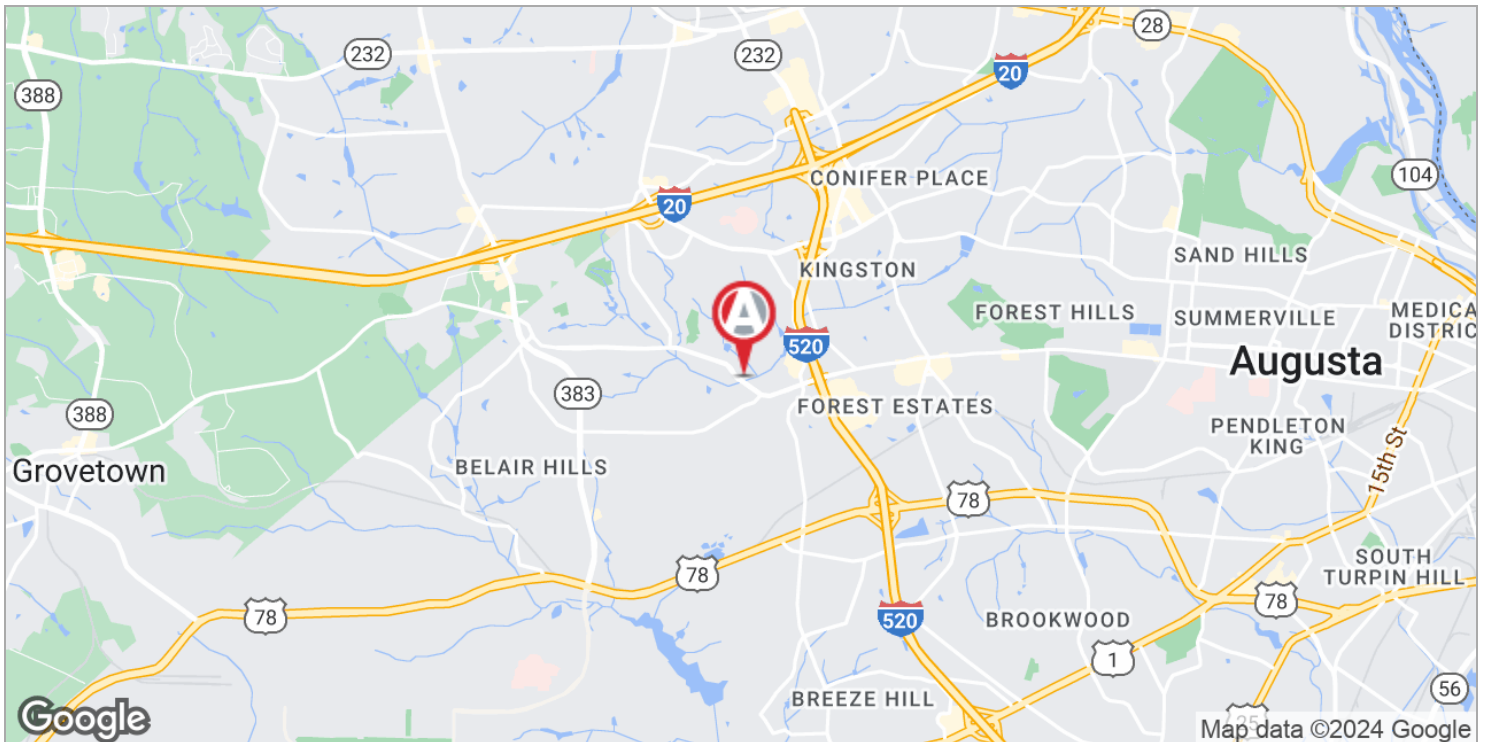
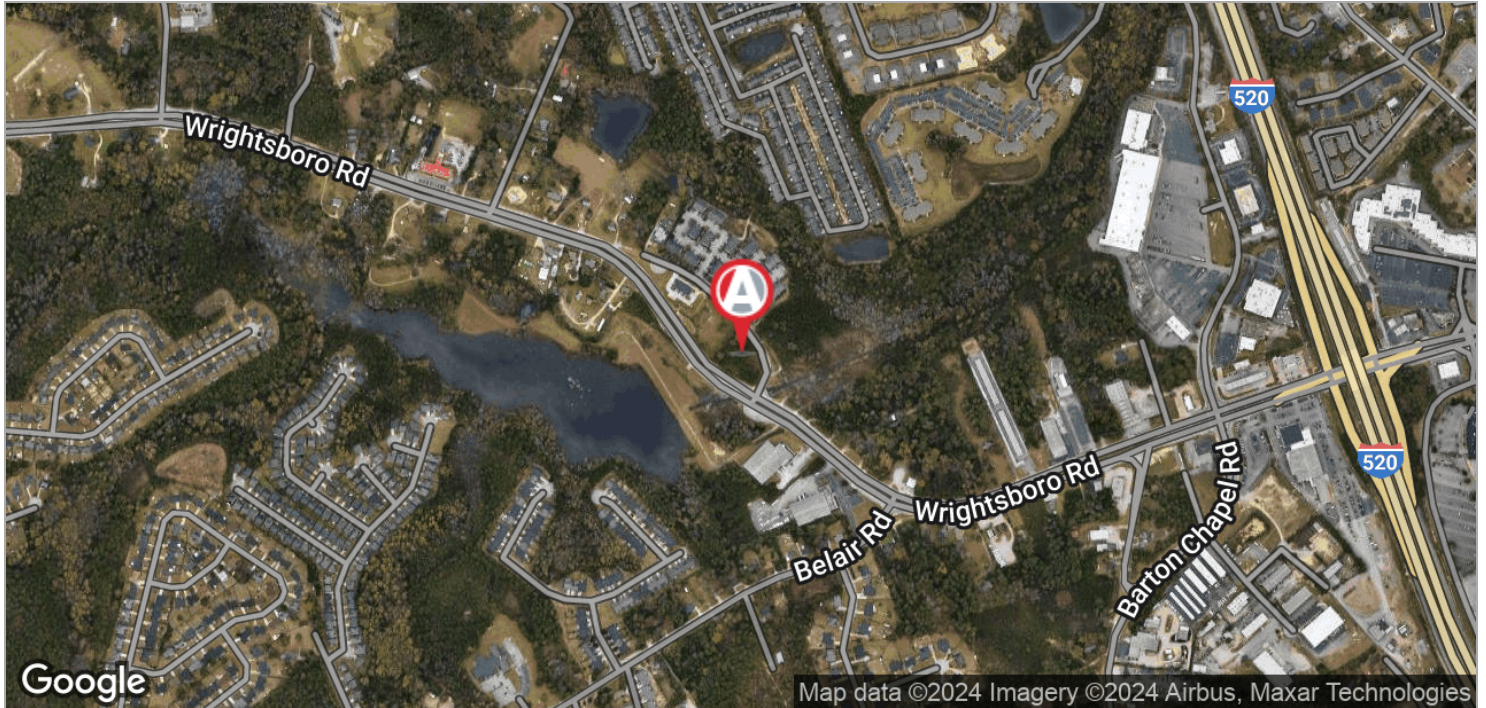
[scott@atkinsrealty.com](mailto:scott@atkinsrealty.com)



706.650.1446 | 208 A Pitcarin Way Augusta, GA 30909

## LAND FOR SALE

1.04 ACRES NEAR BOBBY JONES EXPRESSWAY  
3628 WRIGHTSBORO ROAD, AUGUSTA, GA 30909



### For More Information:

**Scott A. Atkins, SIOR, CCIM**

President

[scott@atkinsrealty.com](mailto:scott@atkinsrealty.com)

