



For Sale

# Office Condo

\$419,000

## Office Condo for Sale

15 Lafayette Place Unit B  
Hilton Head Island, South Carolina 29926

### Property Highlights

- Office condo for sale on the north end of Hilton Head Island
- Great access via Highway 278 to all of Hilton Head and Bluffton
- Located near the entrance to Indigo Run Plantation and Hilton Head Plantation
- Surrounded by medical and professional offices
- Layout consists of 9 offices, conference room, reception area / lobby, kitchenette, copy room, men's and women's restrooms and storage room.

### OFFERING SUMMARY

<b>Sale Price</b>	\$419,000
<b>Building Size</b>	3,024 SF
<b>Price Per SF</b>	\$138
<b>Property Type</b>	Office / Medical
<b>2019 Property Taxes</b>	\$4,356.74

### DEMOGRAPHICS

Stats	Population	Avg. HH Income
<b>3 Miles</b>	17,803	\$96,799
<b>5 Miles</b>	31,505	\$100,714
<b>15 Miles</b>	109,351	\$85,204

For more information

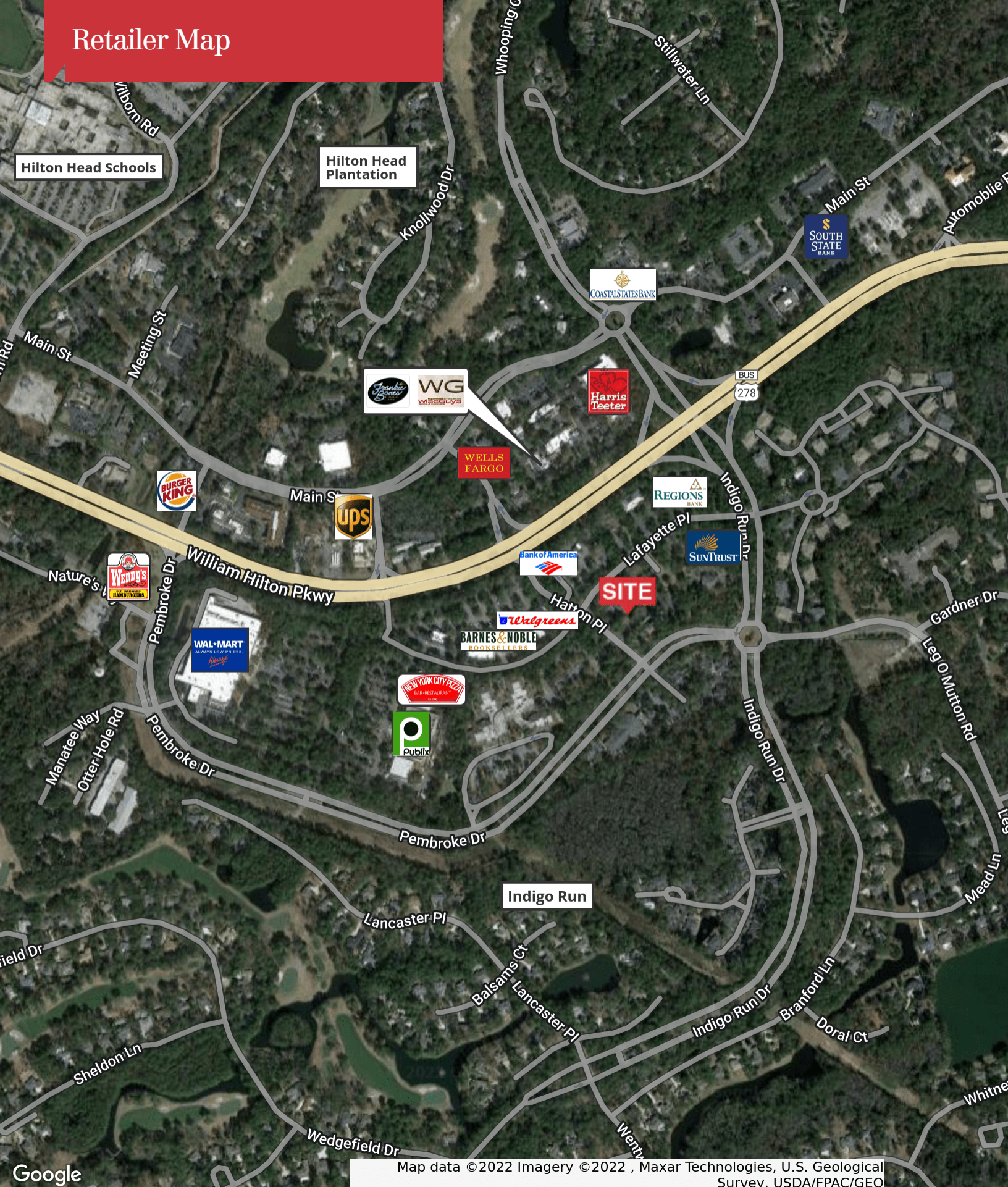
1227 May River Road, Suite 100  
Bluffton, SC 29910  
843 837 4460 tel  
naicarolinacharter.com

## Location Maps





# Retailer Map

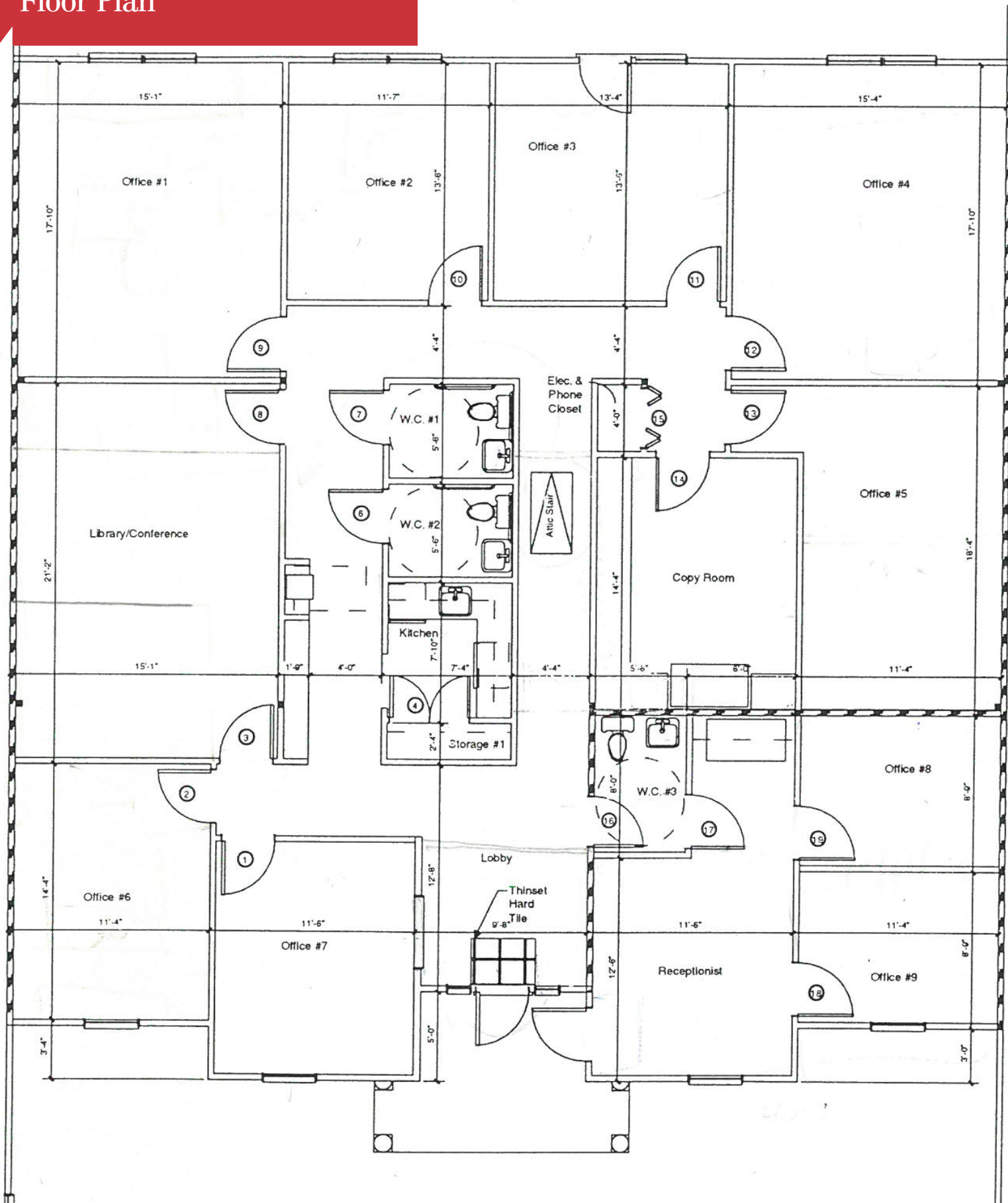








# Floor Plan

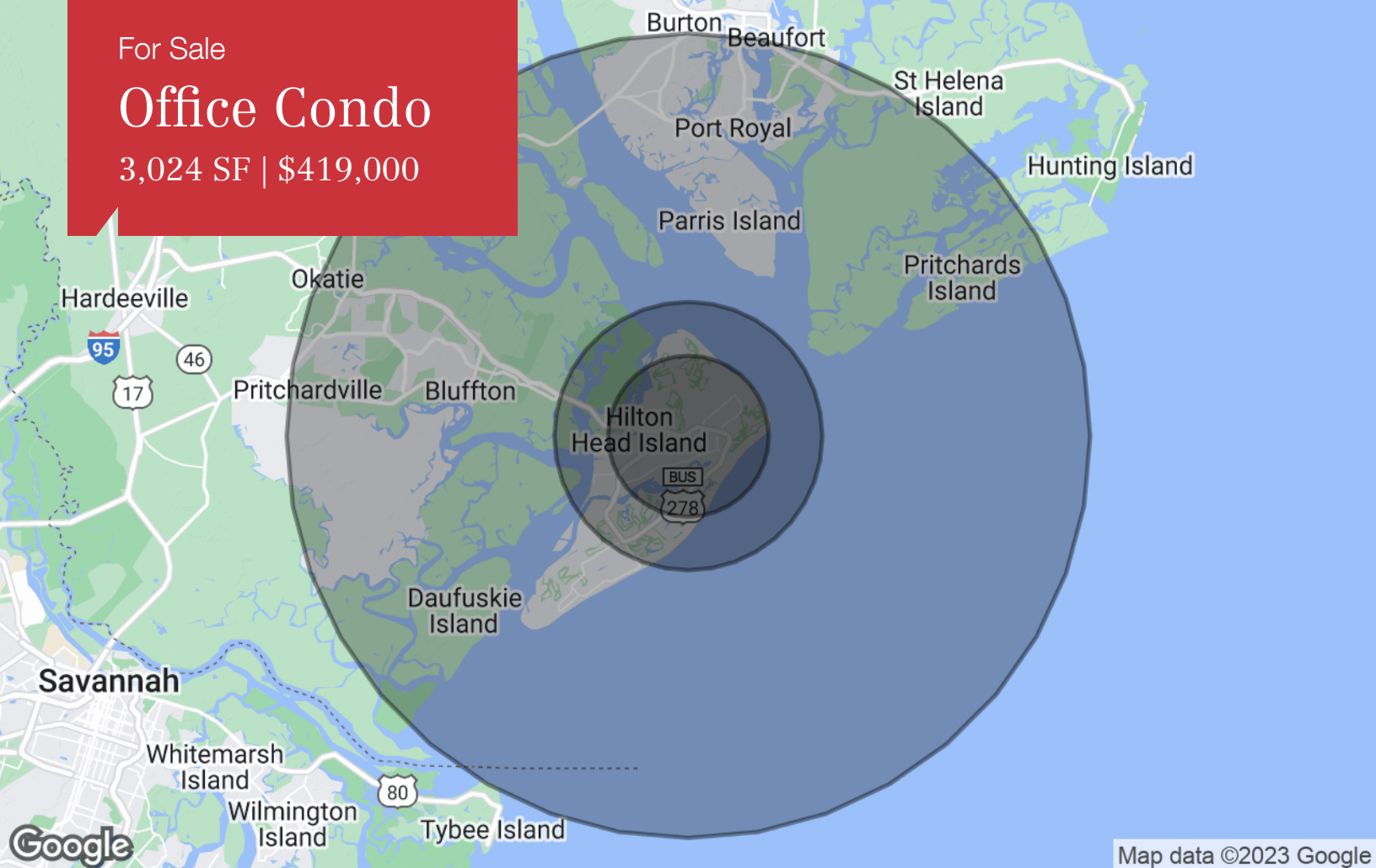




For Sale

# Office Condo

3,024 SF | \$419,000



Map data ©2023 Google

## Population

	3 Miles	5 Miles	15 Miles
TOTAL POPULATION	17,803	31,505	109,351
MEDIAN AGE	48.0	49.5	41.4
MEDIAN AGE (MALE)	47.7	49.0	40.6
MEDIAN AGE (FEMALE)	48.4	49.8	41.9

## Households & Income

	3 Miles	5 Miles	15 Miles
TOTAL HOUSEHOLDS	7,622	13,969	44,385
# OF PERSONS PER HH	2.3	2.3	2.5
AVERAGE HH INCOME	\$96,799	\$100,714	\$85,204
AVERAGE HOUSE VALUE	\$535,599	\$557,367	\$435,284

\* Demographic data derived from 2020 ACS - US Census