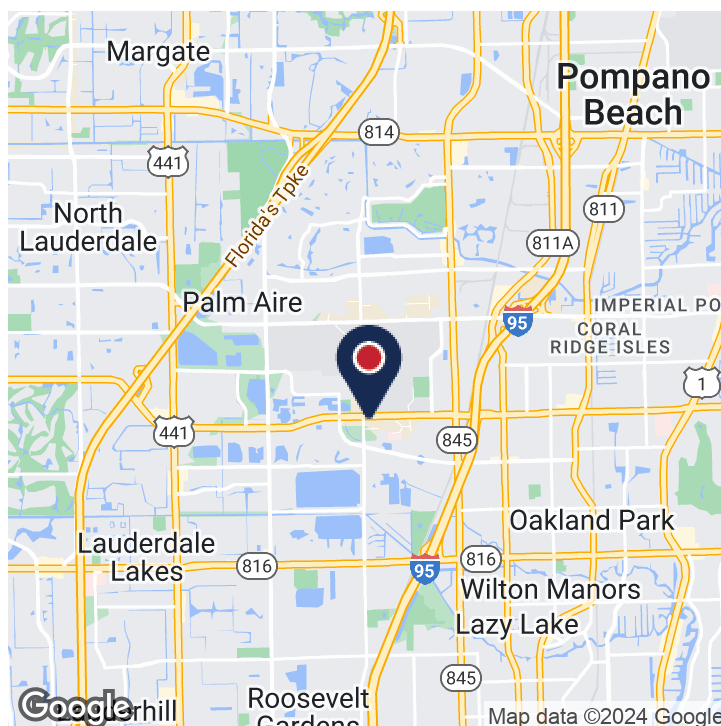


CAMPUS STYLE OFFICE PROPERTY FOR LEASE

2000 W. Commercial Boulevard, Fort Lauderdale, FL 33309



Executive Summary



OFFERING SUMMARY

Gross Lease Rate:	\$18.00 - 20.00 SF/yr
Building Size:	109,250 SF
Available SF:	1,862 - 2,440 SF
Year Built:	1983
Zoning:	AIP

PROPERTY OVERVIEW

For Lease:

Suite 202A is 2,440 square feet

Suite 214 is 1,862 square feet and is move in ready condition.

Suite 215 is 2,284 square feet

PROPERTY HIGHLIGHTS

- Janitorial services to the Tenant Premises is paid for by the Landlord. Tenant is responsible to their own Premises electricity.
- Conveniently located between I-95 and the Florida Turnpike
- Ample Parking
- Close proximity to restaurants, shopping, banks, public transportation, and Fort Lauderdale Executive Airport
- Down the street from David Beckham new soccer stadium which will be the home of Major League Soccer team Inter Miami FC
- Nicely maintained building with skylights throughout atrium



Jonathan Thiel

Senior Vice President

954.652.2020

jthiel@bergercommercial.com

CAMPUS STYLE OFFICE PROPERTY FOR LEASE

2000 W. Commercial Boulevard, Fort Lauderdale, FL 33309



COMMERCIAL BROKERAGE AND PROPERTY MANAGEMENT

Additional Photos



Jonathan Thiel
Senior Vice President
954.652.2020
jthiel@bergercommercial.com

Berger Commercial Realty Corp. | bergercommercial.com

550 S. Andrews Avenue Suite 400, Ft. Lauderdale, FL 33301 | P: 954.358.0900 • F: 954.358.0901 | 2240 Woolbright Road, Suite 300, Boynton Beach, FL, 33426 | P: 561.613.0900 F: 561.877.8363

Information furnished regarding this property is from sources deemed reliable, but no warranty or representation as to the accuracy thereof and it is submitted subject to errors, omissions, prior sale, lease or withdrawal without prior notice.

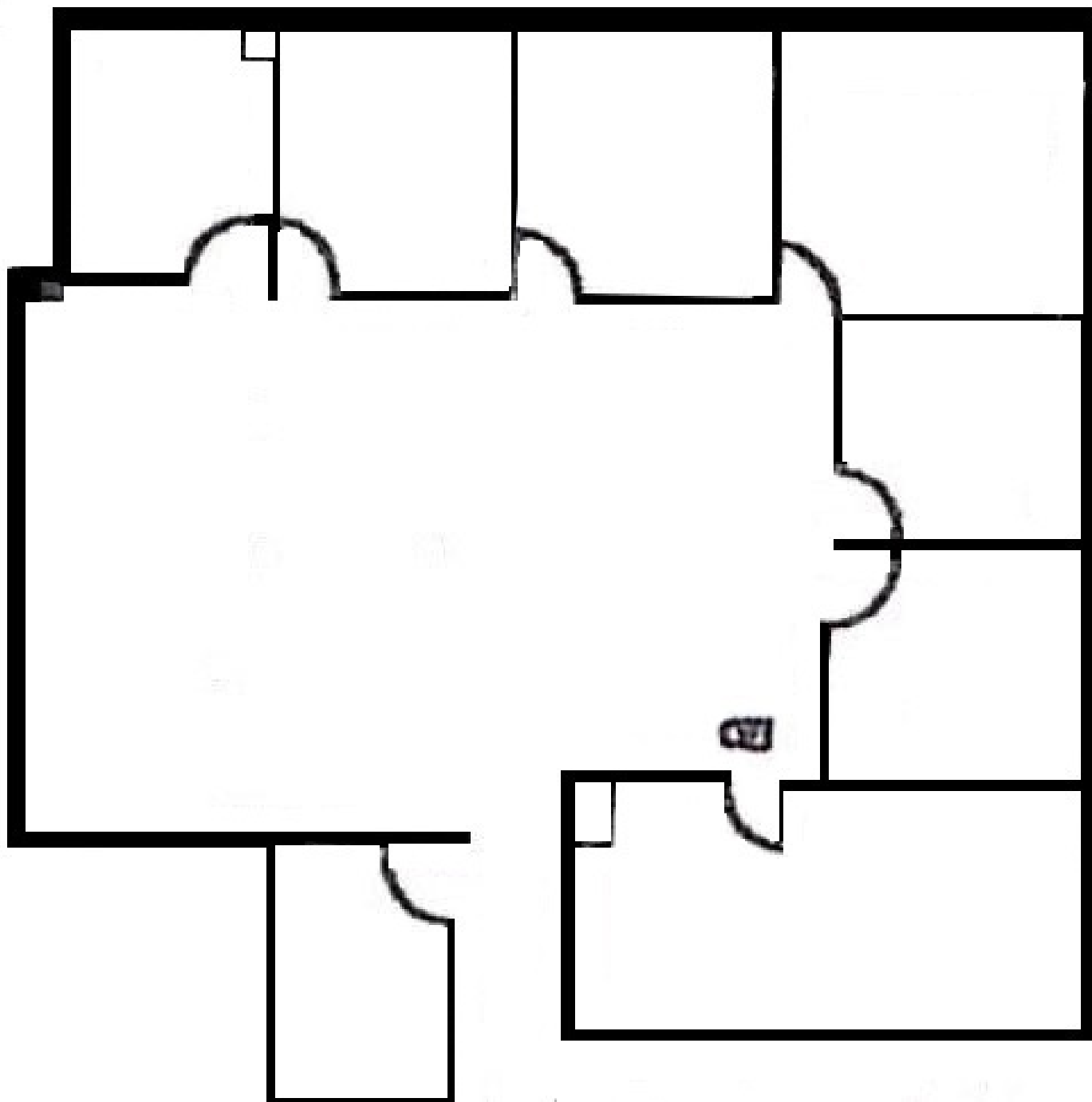
OFFICE SPACE

2000 W. Commercial Boulevard, Fort Lauderdale, FL 33309



COMMERCIAL BROKERAGE AND PROPERTY MANAGEMENT

Suite 202A - 2,440 SF



Jonathan Thiel
Senior Vice President
954.652.2020
jthiel@bergercommercial.com

Berger Commercial Realty Corp. | bergercommercial.com

550 S. Andrews Avenue Suite 400, Ft. Lauderdale, FL 33301 | P: 954.358.0900 • F: 954.358.0901 | 2240 Woolbright Road, Suite 300, Boynton Beach, FL, 33426 | P: 561.613.0900 F: 561.877.8363

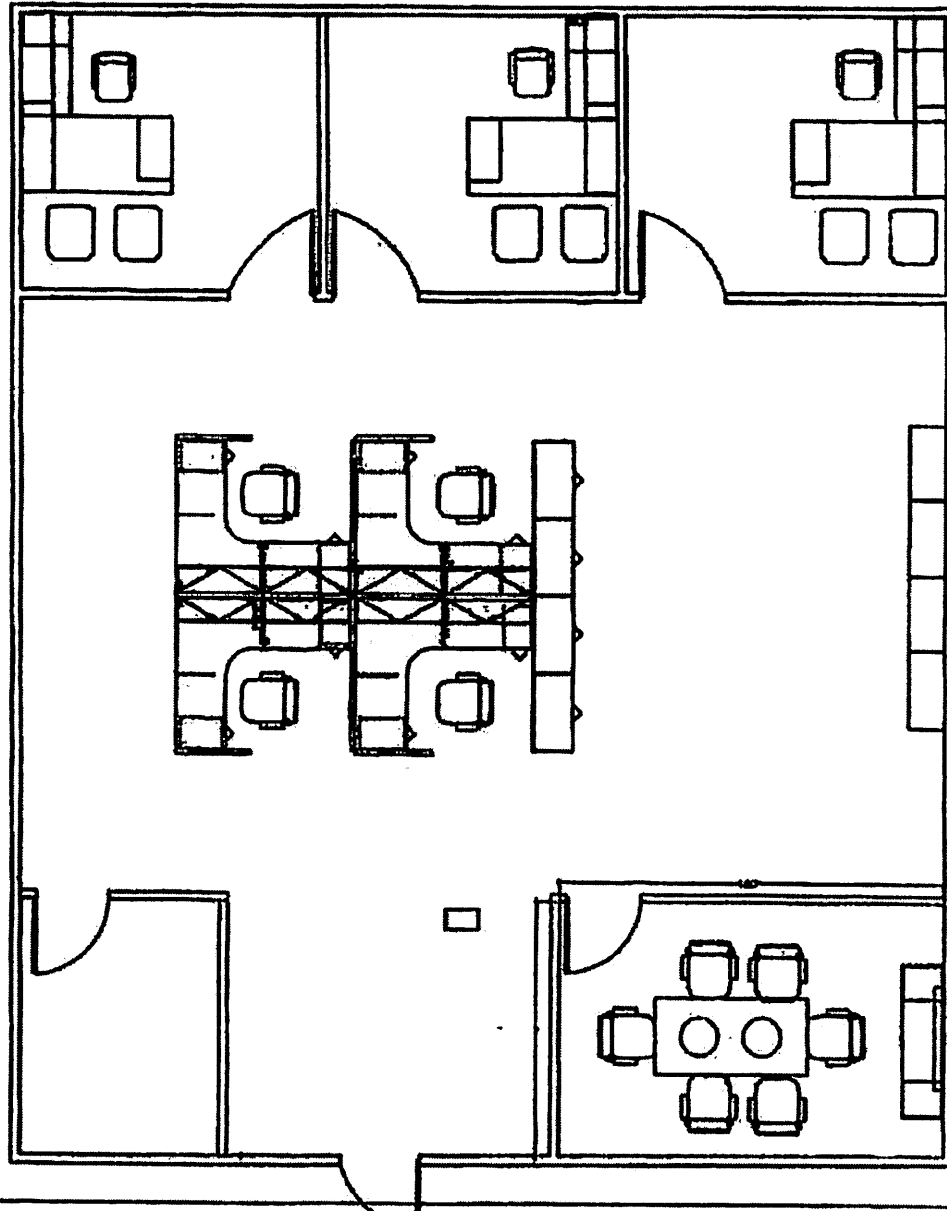
Information furnished regarding this property is from sources deemed reliable, but no warranty or representation as to the accuracy thereof and it is submitted subject to errors, omissions, prior sale, lease or withdrawal without prior notice.

CAMPUS STYLE OFFICE PROPERTY FOR LEASE

2000 W. Commercial Boulevard, Fort Lauderdale, FL 33309



Suite 214



SUITE 214

FLOOR PLAN

1862 SQ FT



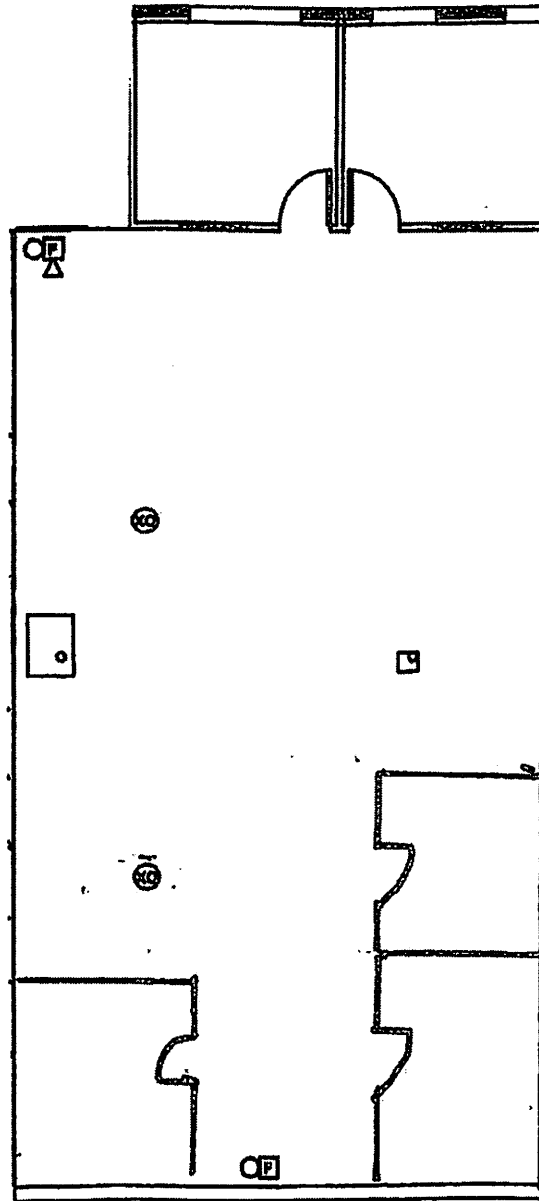
Jonathan Thiel
Senior Vice President
954.652.2020
jthiel@bergercommercial.com

CAMPUS STYLE OFFICE PROPERTY FOR LEASE

2000 W. Commercial Boulevard, Fort Lauderdale, FL 33309



Suite 215



SUITE 215

2284 RSF



Jonathan Thiel
Senior Vice President
954.652.2020
jthiel@bergercommercial.com

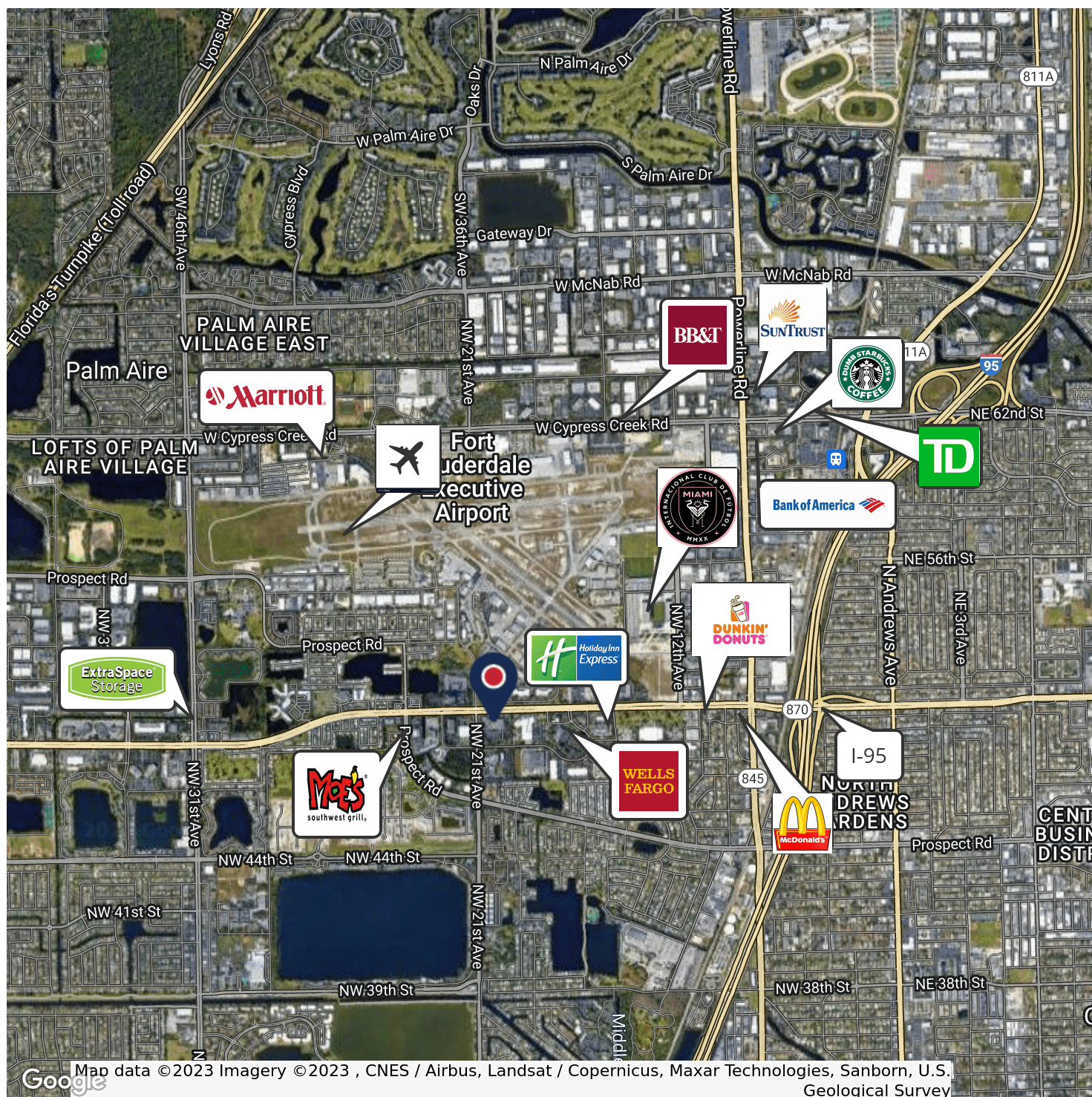
CAMPUS STYLE OFFICE PROPERTY FOR LEASE

2000 W. Commercial Boulevard, Fort Lauderdale, FL 33309



COMMERCIAL BROKERAGE AND PROPERTY MANAGEMENT

Retailer Map



Google

Map data ©2023 Imagery ©2023, CNES / Airbus, Landsat / Copernicus, Maxar Technologies, Sanborn, U.S. Geological Survey



Jonathan Thiel
Senior Vice President
954.652.2020
jthiel@bergercommercial.com

Berger Commercial Realty Corp. | bergercommercial.com

550 S. Andrews Avenue Suite 400, Ft. Lauderdale, FL 33301 | P: 954.358.0900 • F: 954.358.0901 | 2240 Woolbright Road, Suite 300, Boynton Beach, FL, 33426 | P: 561.613.0900 F: 561.877.8363

Information furnished regarding this property is from sources deemed reliable, but no warranty or representation as to the accuracy thereof and it is submitted subject to errors, omissions, prior sale, lease or withdrawal without prior notice.