

Downtown Office / Retail / Service Suite

315 E LIBERTY, ANN ARBOR, MI 48104



Swisher
COMMERCIAL

FOR LEASE



SUMMARY

Lease Rate:	\$28.50 SF/yr Plus Utilities
First Floor Available:	Fully Leased
Zoning:	D1

PROPERTY OVERVIEW

Great opportunity in free-standing historic building with oak trim and wainscoting, hardwood floors and stained-glass windows. Located on thoroughfare between Main and U of M campus.

Suite is ideal for service providers, retail or office. On-site reserved parking available.

Lots of residences and Ann Arbor's downtown amenities available in both directions, including condos, apartments, dorms, service businesses, restaurants, coffee shops, retail, entertainment, etc.

***Building
relationships.***

208 East Washington Street Ann Arbor, MI 48104

734.663.0501

Joe Palms, CCIM

734.662.3676

JPALMS@SWISHERCOMMERCIAL.COM

Michael Giraud

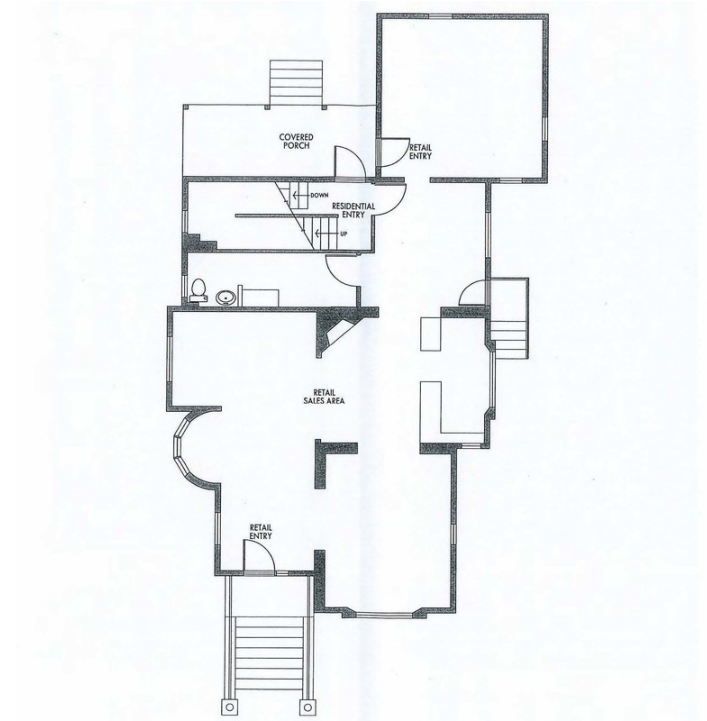
734.662.3617

MGIRAUD@SWISHERCOMMERCIAL.COM

SWISHERCOMMERCIAL.COM

Downtown Office / Retail / Service Suite for Lease

315 E LIBERTY, ANN ARBOR, MI 48104



***Building
relationships.***

208 East Washington Street Ann Arbor, MI 48104

734.663.0501

Joe Palms, CCIM
Michael Giraud

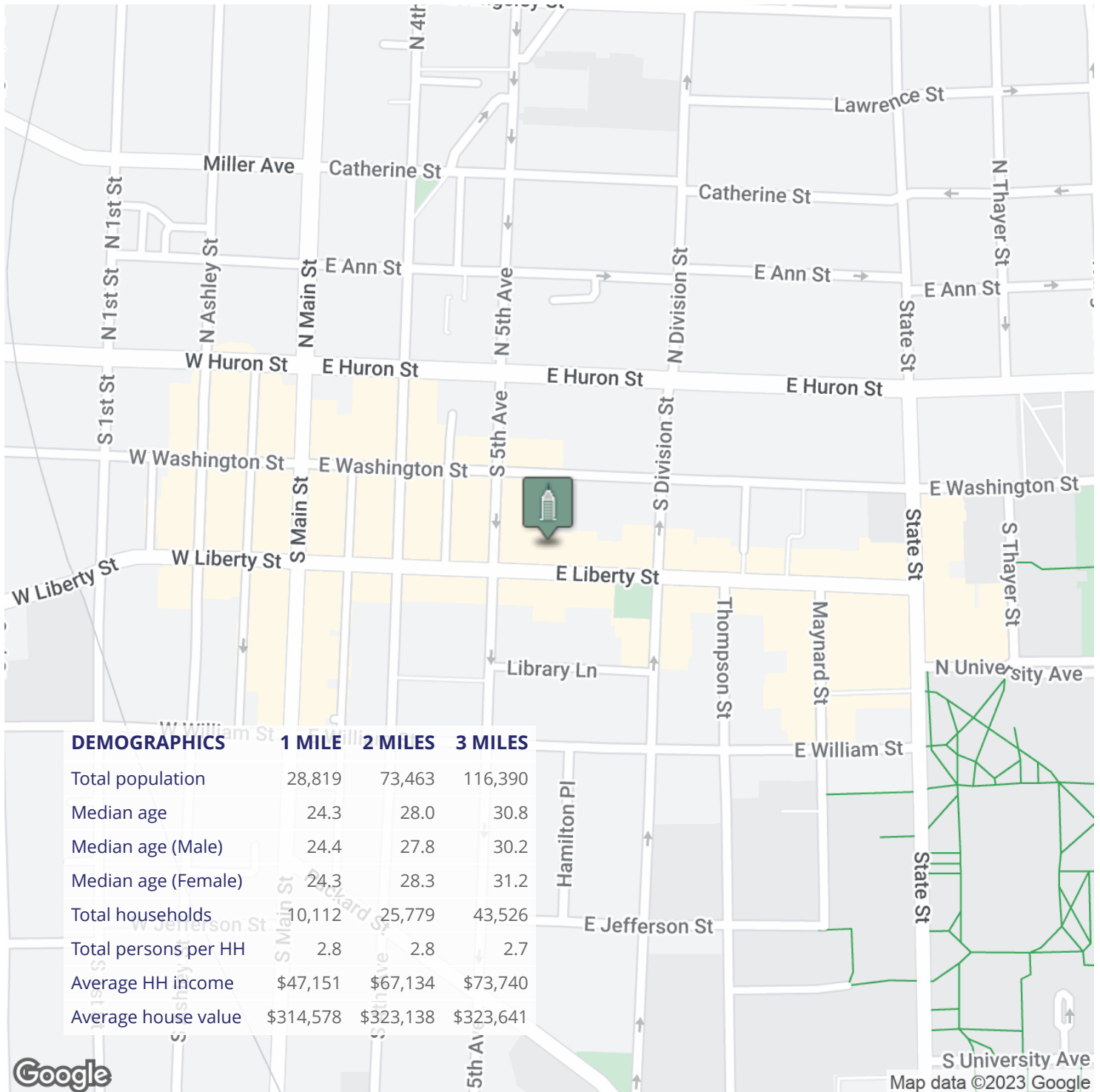
734.662.3676
734.662.3617

JPALMS@SWISHERCOMMERCIAL.COM
MGIRAUD@SWISHERCOMMERCIAL.COM

SWISHERCOMMERCIAL.COM

Downtown Retail / Office / Service Suite for Lease

315 E LIBERTY, ANN ARBOR, MI 48104



**Building
relationships.**

208 East Washington Street Ann Arbor, MI 48104

734.663.0501

Joe Palms, CCIM
Michael Giraud

734.662.3676
734.662.3617

JPALMS@SWISHERCOMMERCIAL.COM
MGIRAUD@SWISHERCOMMERCIAL.COM

SWISHERCOMMERCIAL.COM