

OFFICE FOR LEASE

1411 S 12TH ST | BISMARCK, ND





OFFERING SUMMARY

Lease Rate:	Negotiable
Building Size:	6,000 SF
Available SF:	
Lot Size:	20,000 SF
Year Built:	1976
Zoning:	MA

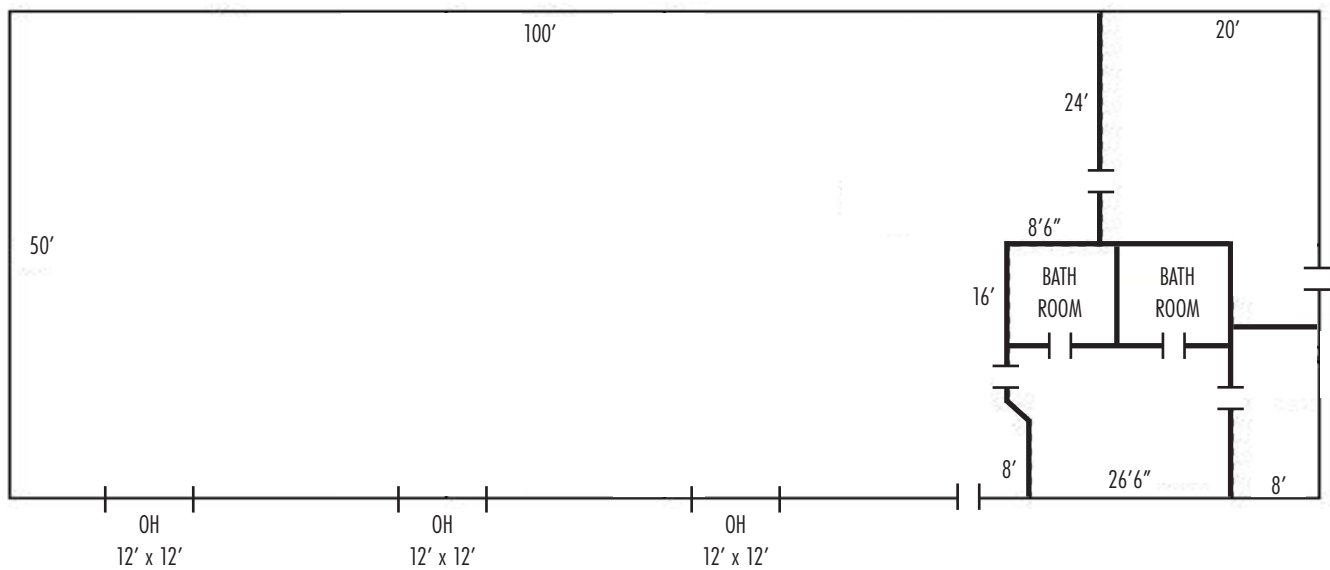
PROPERTY OVERVIEW

Industrial space with office, large shop area, floor drains and radiant heat. Street frontage on S 12th Street. Total building space is 50' x 120'. Tenant pays taxes, maintenance and utilities. Landlord pays building insurance.

PROPERTY HIGHLIGHTS

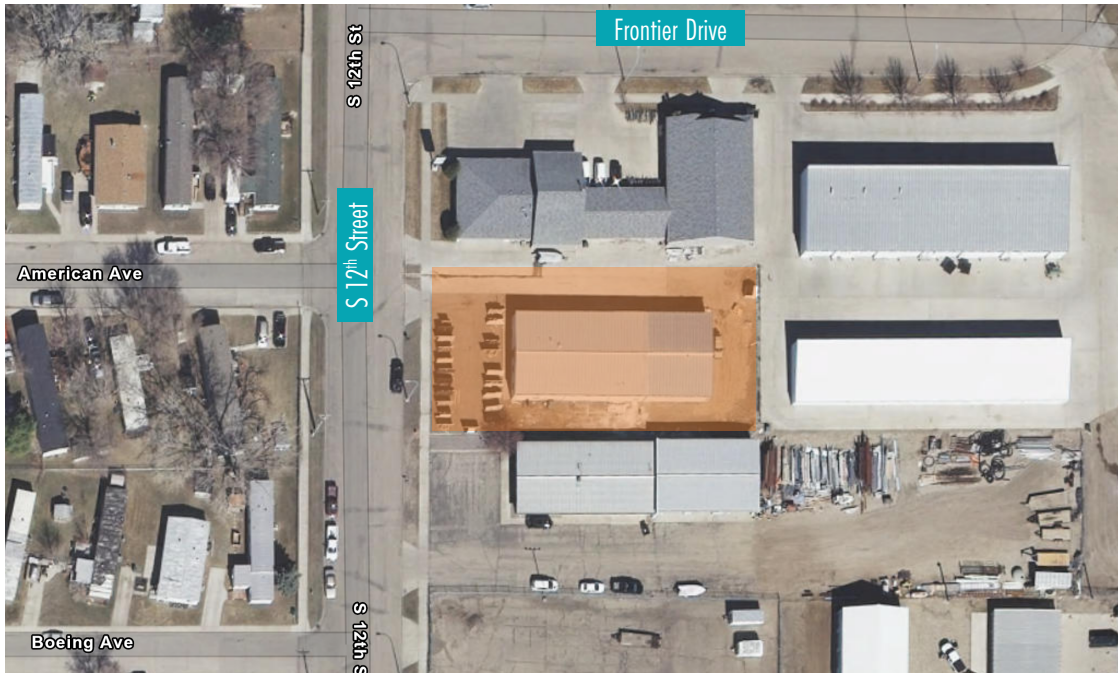
- (3) 12' x 12' overhead doors
- Office, breakroom, 2 bathrooms
- Radiant heat
- Updated lighting

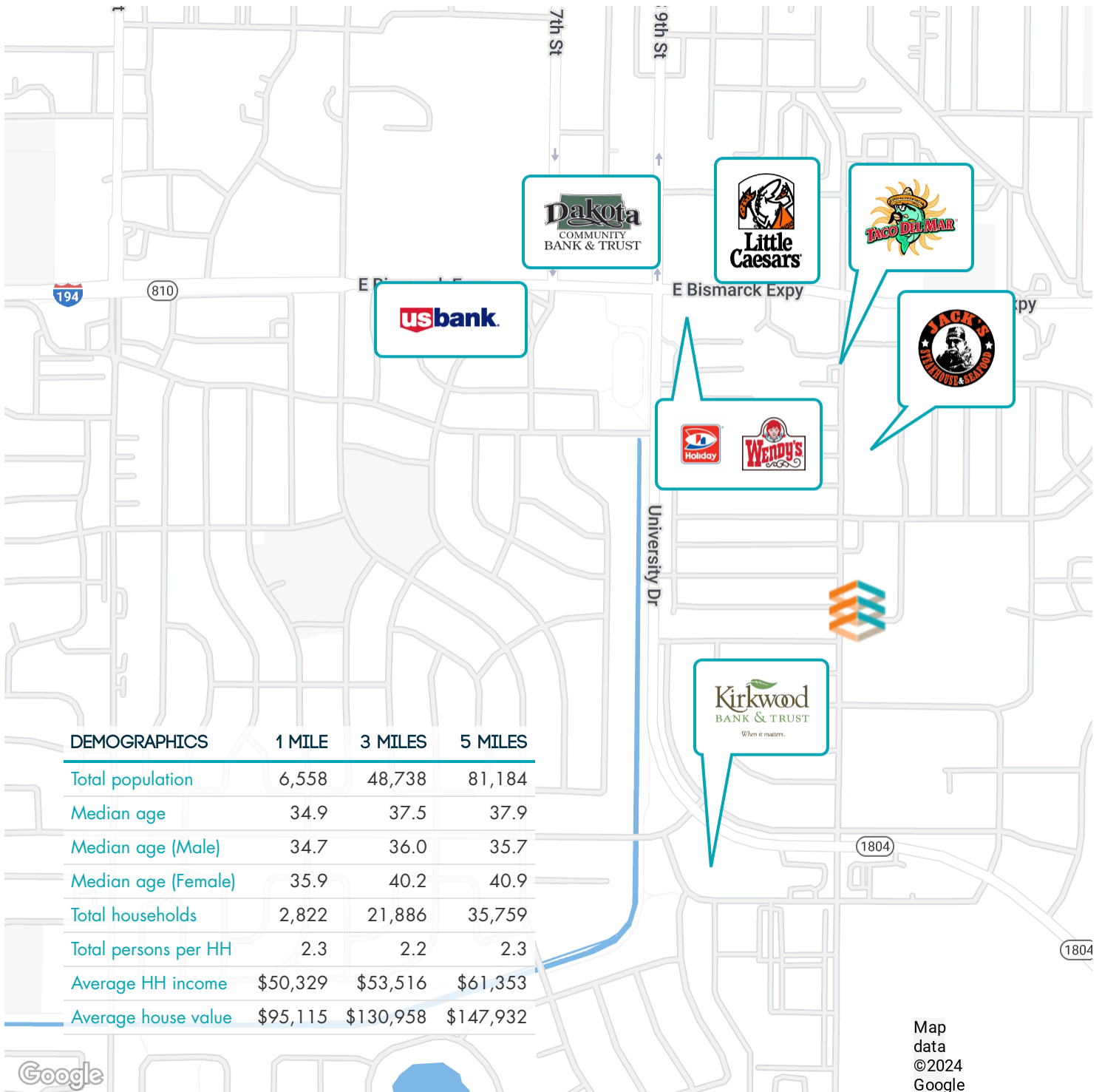
FLOOR PLAN



S 12TH STREET

*INTENDED FOR VISUAL PURPOSE ONLY
*SOME DETAILS MAY NOT BE TO SCALE





BUILDING RELATIONSHIPS. BUILDING THE COMMUNITY.™



**KYLE HOLWAGNER, CCIM,
SIOR**

Partner | Broker Associate

701.400.5373

kyle@thecragroup.com



**KRISTYN STECKLER,
COMMERCIAL REALTOR®**

Partner | Broker

701.527.0138

kristyn@thecragroup.com

STAY IN TOUCH



@THECRAGROUP



@THECRAGROUP



THE CRA GROUP

THECRAGROUP.com

THE CRA GROUP | 216 N 2ND ST | BISMARCK, ND 58501

Although information has been obtained from sources deemed reliable, neither Owner nor CRA makes any guarantees, warranties, or representations, express or implied, as to the completeness or accuracy as to the information contained herein. You should conduct a careful, independent investigation of the property and verify all information. Any reliance on this information is solely at your own risk. The Property may be withdrawn without notice. Neither Owner nor CRA accepts any liability for any loss or damage suffered by any party resulting from reliance on this information. Photos, logos, and other images herein are the property of their respective owners. Use of these images without the express written consent of the owner is prohibited.