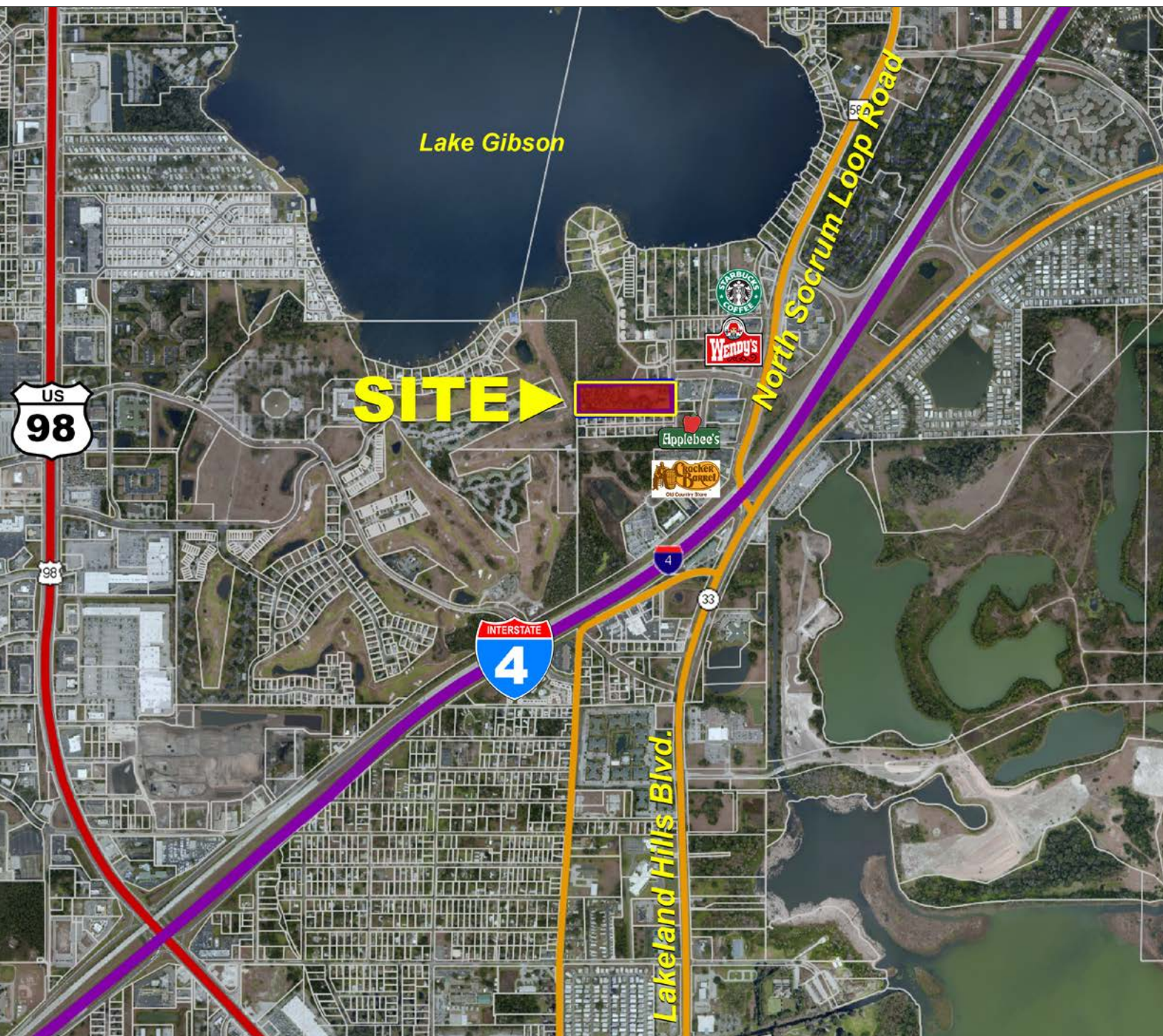


LAKELAND RESIDENTIAL LAND

LAKELAND, FL | POLK COUNTY

7.2 ± ACRES TOTAL

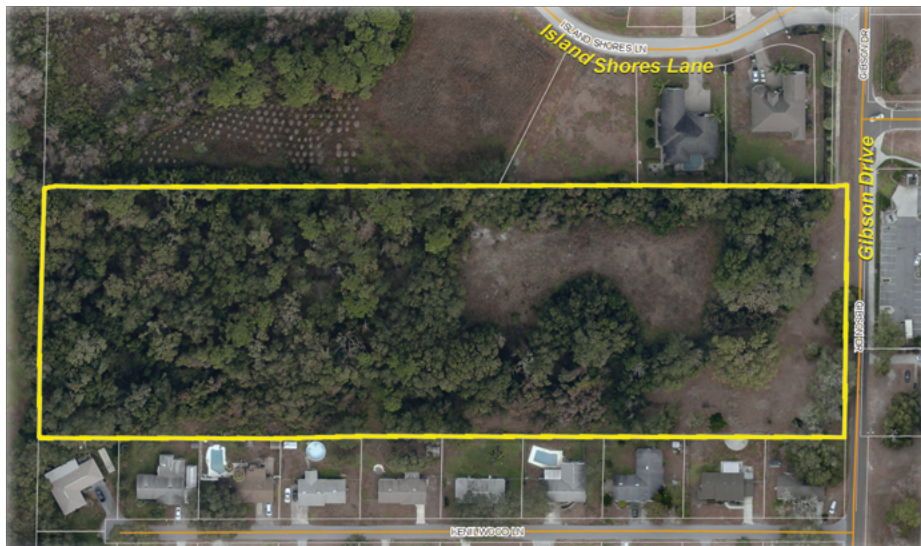


Lakeland Residential Land

Lakeland, FL • Polk County



*Adjacent to Upscale
Gated Neighborhoods*



Residential (apartment/multifamily) development tract is located in north Lakeland with all usable land! Close to all amenities, shopping, dining, entertainment, healthcare, and I-4. Great location!

Acreeage: 7.2 +/- acres

Sale Price: \$600,000

Price per Acre: \$83,333

Permitted Lots: 72 multifamily apartment units with clubhouse and swimming pool

Price per Lot: \$8,333

County: Polk

Site Address: 4430 Gibson Dr., Lakeland, FL 33809

Nearest Intersection: Lakeland Park Blvd. and Gibson Drive

Road Frontage: 315 +/- feet on Gibson Drive

Utilities & Water: City of Lakeland

Uplands/Wetlands: 100% uplands

Zoning/FLU:

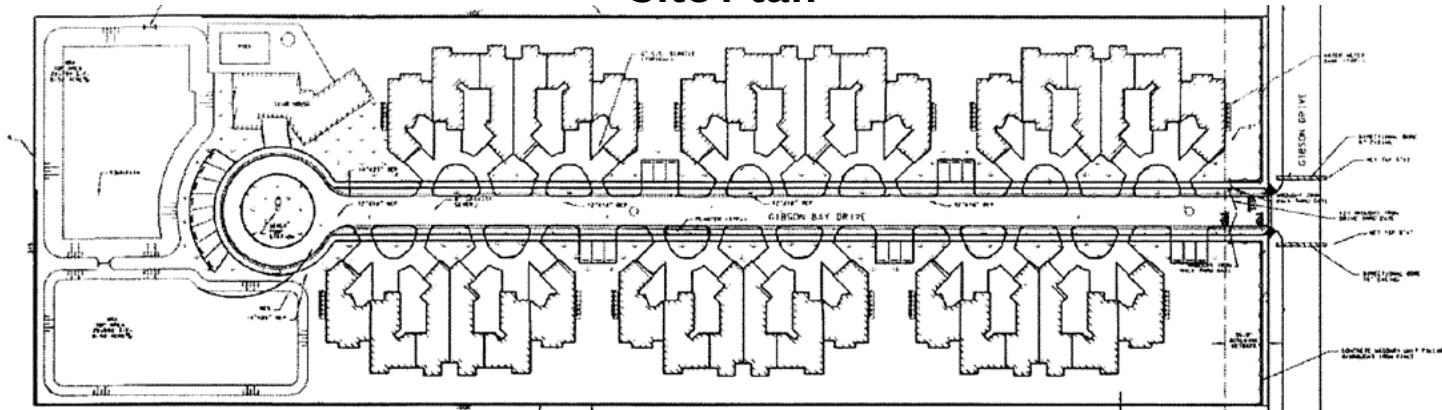
- FLU - RM (Residential Medium)
- Zoning: MF-12
- PUD #4648

Taxes: \$2,667.90

Parcel ID: 242730162000030400

Driving Directions: From Lakeland, go north on Lakeland Hills Blvd. (SR 33) and go under I-4 to N Socrum Loop Rd. Go about 1/2 mile and take a left on Lakeland Park Blvd. Then go about 1/3 mile, take a left on Gibson Dr. and property will be on the right.

Site Plan



Clay Taylor, ALC
863.774.3532 • Clay@SREland.com

David Hitchcock, ALC, CCIM
863.272.7155 • DavidH@SREland.com

SREland.com/LakelandRes

LAKELAND OFFICE:
114 N. Tennessee Ave. 3rd Floor
Lakeland, FL 33801
863.648.1528 - Main Office

LAKE CITY OFFICE:
356 NW Lake City Avenue
Lake City, FL 32055
386.438.5896

©2019 SVN | Saunders Ralston Dantzler Real Estate. All SVN® Offices Independently Owned and Operated
Saunders Ralston Dantzler Real Estate is regarded as an authority on all types of Florida land and conservation easements, transacting over \$2.5 billion in sales since 1996. Offering land, forestry, and conservation easement real estate services through Saunders Ralston Dantzler Real Estate and the Saunders Real Estate Forestry Group, the Saunders team of land professionals offers advisory and transactional services through their home office in Lakeland, FL, the North Florida office in Lake City, FL, and the South Georgia office in Thomasville, GA. We provide services to land and commercial clients through our commercial real estate brokerage, Saunders Ralston Dantzler Real Estate.



061019-A