

8550 SE 157TH PLACE

INGLIS, FL | LEVY COUNTY

50 ± ACRES TOTAL





Beautiful Grape Vines!

SPECIFICATIONS & FEATURES

8550 SE 157th Place is the perfect private hunting retreat! This property has been managed for a quality deer herd that draws from the Goethe Forest and neighboring soybean fields. Located 7 miles to the Gulf Hammock Wildlife Management Area and 20 minutes to Bird Creek Boat Ramp at the mouth of the Withlacoochee River on the Gulf of Mexico provides exciting opportunities for the outdoor enthusiast!

The almost new 2017 mobile home is 3 bedroom, 2 baths (with walk-in showers), screened in back porch to watch the wildlife and grapevines grow! Attached carport and a separate detached carport and a large metal barn that stores tractor ATV's or a small boat! Another great feature is the Generac generator that automatically comes on if the power goes off. This property is ready to experience nature while just a 20 minute drive to the small, but popular tourist destination of Crystal River. This property is any hunter's dream to experience abundant wildlife right at your back porch.

Acreage: 50 ± acres

Sale Price: \$395,000

Site Address: 8550 SE 157th Place, Inglis, FL 34449

County: Levy

Acreage: 50 acres of well managed hunting land! Includes a mobile home (2017), carports & storage barn

Road Frontage: 650' on SE 157th Place

Predominant Soil Types: Wekiva Fine Sand & Zolfo

Uplands/Wetlands: 98% uplands, 2% wetlands

Land Cover: Oaks, pines and palms with an "Old Florida" feel!

Water Source: Well, electric with emergency generator, septic

Game Populations: Turkey, deer and hogs

Structures: 2017 Mobile Home with carports and large screened back porch

Zoning: FRR Forestry/Rural Residential

Current Use: Home and hunting

Taxes: \$741.52 (2018)

Fencing: Partial fencing

General Points of Interest: 7 Miles to Gulf Hammock Wildlife Management Area. Close to the Gulf of Mexico; 1 hour to Gainesville or Ocala

LOCATION & DRIVING DIRECTIONS

Parcel IDs: 0384000100 and 038680010A

GPS Location: 29.10185,-82.624412

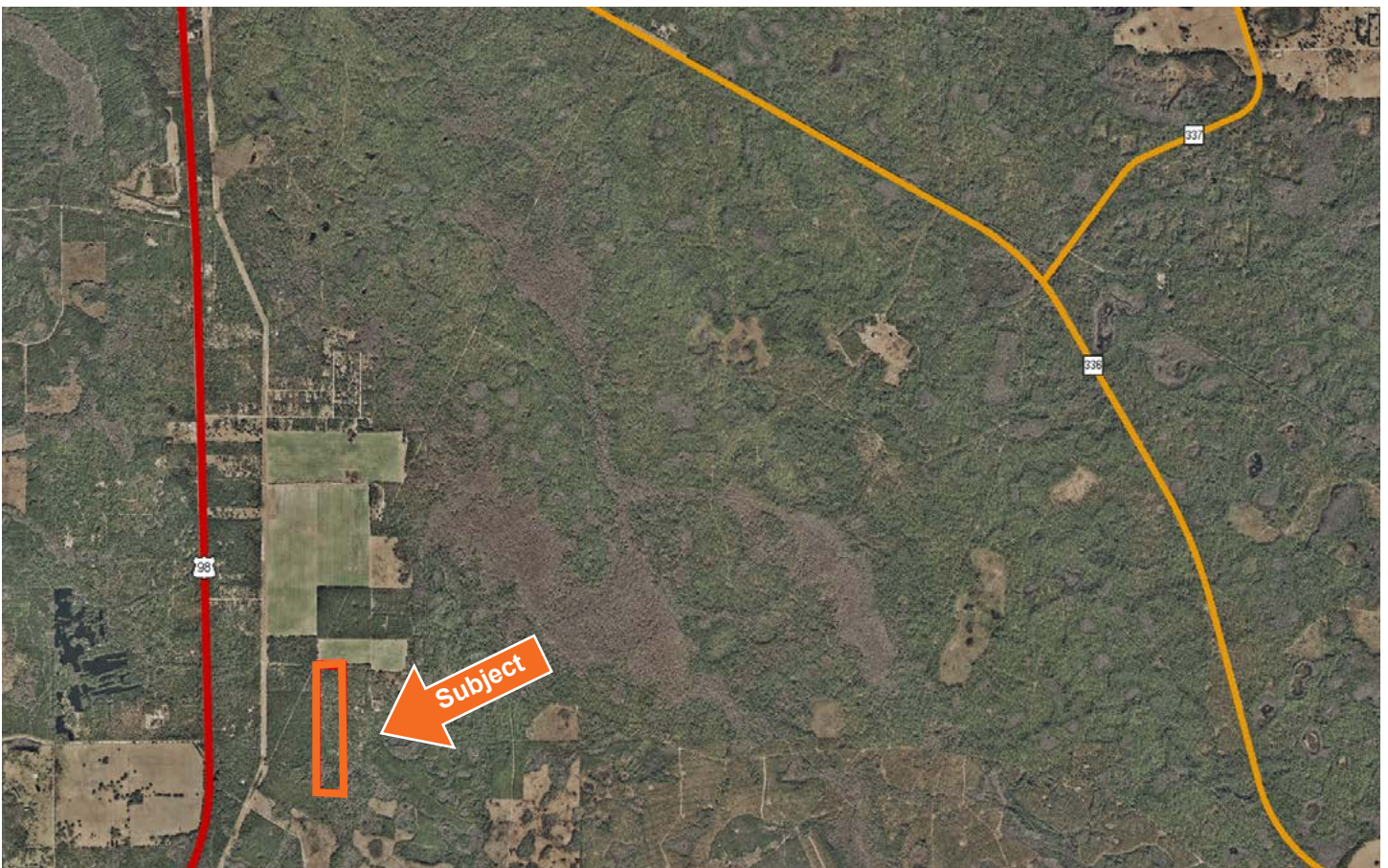
Driving Directions:

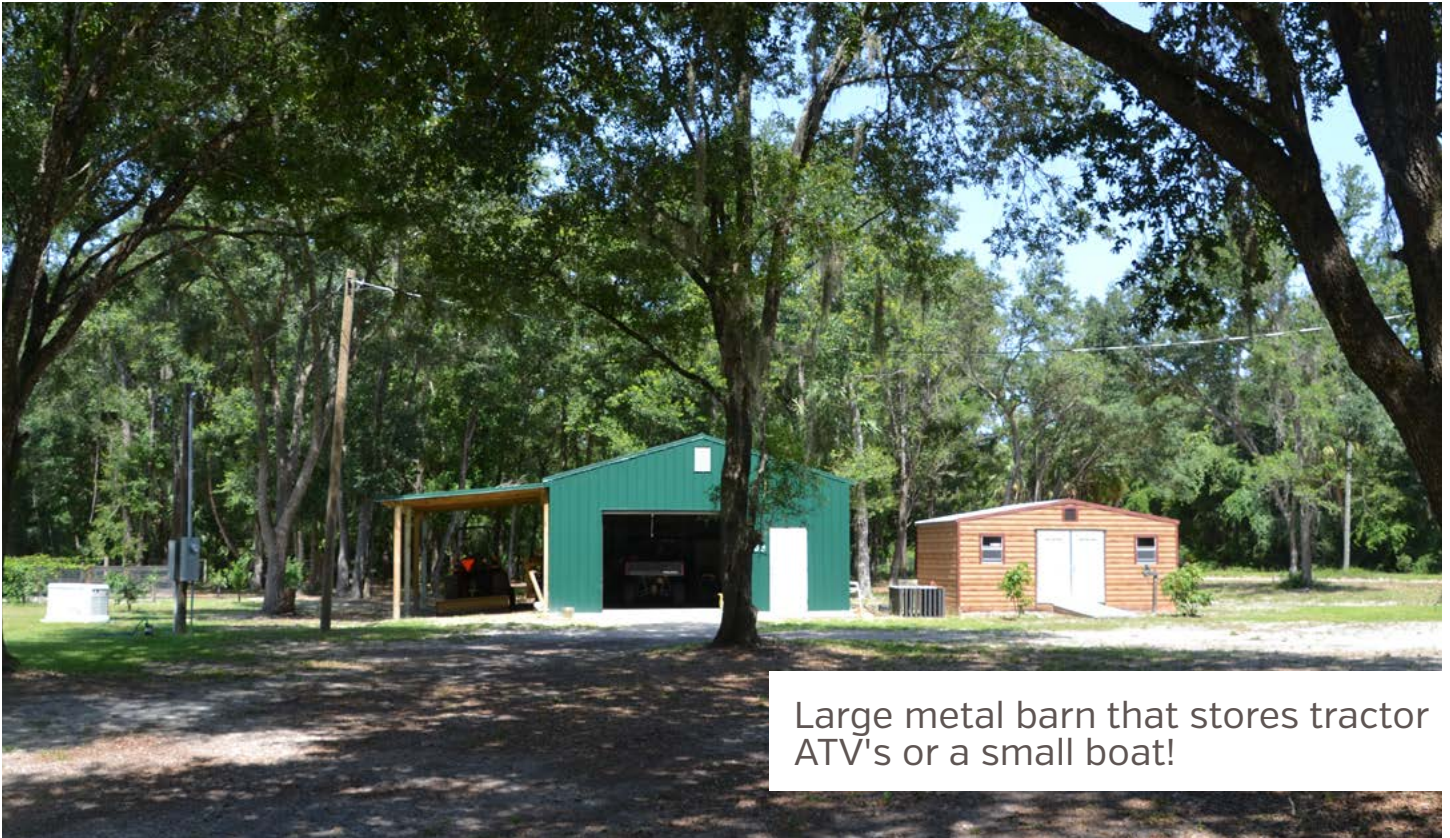
- From Inglis head north approximately 5 miles on US 19N/US98 N to SE 157th Place
- Turn right. Property will be 1/2 mile on the right.

Showing Instructions: Contact Debbie or Greg by appointment only.

7 miles to the Gulf Hammock
Wildlife Management Area!

20 minutes to Bird Creek Boat Ramp at
the mouth of the Withlacoochee River
on the Gulf of Mexico!

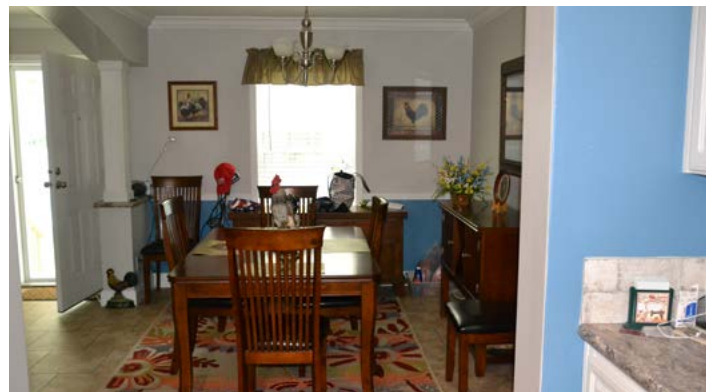
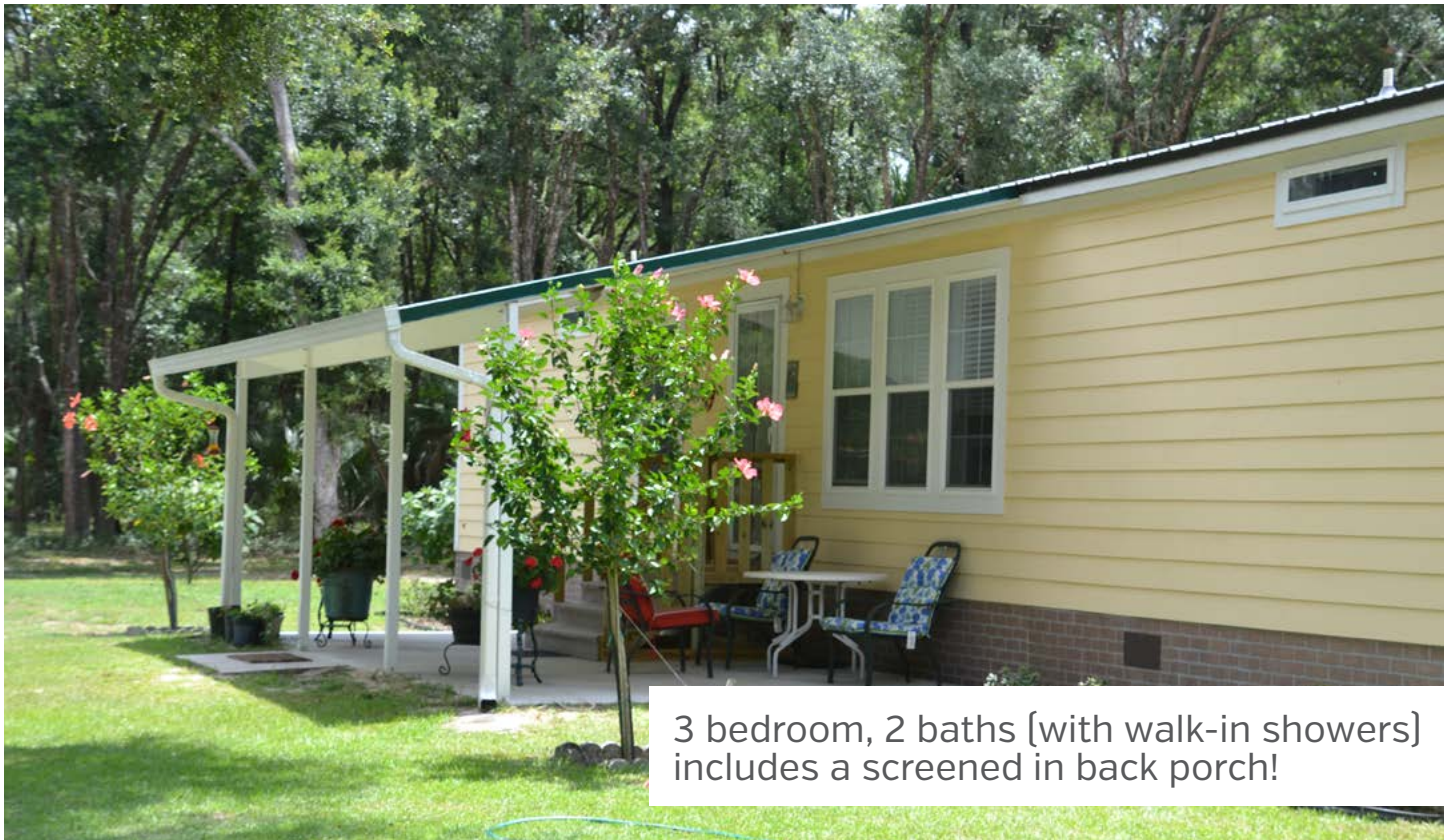




Large metal barn that stores tractor
ATV's or a small boat!









Generac generator that automatically comes on if the power goes off



114 N. Tennessee Ave.
3rd Floor
Lakeland, FL 33801

50 ± Acres • "Old Florida" Private Hunting Retreat!

Includes almost new mobile home, carport and a storage barn
Located 7 miles to the Gulf Hammock Wildlife Management Area
20 minutes to Bird Creek Boat Ramp at the mouth of the Withlacoochee River on the Gulf of Mexico!

SREland.com/8550SE

Debbie Banks, 904.637.4842 | dbanks@svn.com
Greg Driskell, 386.385.7304 | greg.driskell@svn.com



LAKELAND OFFICE:
114 N. Tennessee Ave. 3rd Floor
Lakeland, FL 33801
863.648.1528 - Main Office

LAKE CITY OFFICE:
356 NW Lake City Avenue
Lake City, FL 32055
386.438.5896

©2019 SVN | Saunders Ralston Dantzler Real Estate. All SVN® Offices Independently Owned and Operated
Saunders Ralston Dantzler Real Estate is regarded as an authority on all types of Florida land and
conservation easements, transacting over \$2.5 billion in sales since 1996. Offering land, forestry, and
conservation easement real estate services through Saunders Ralston Dantzler Real Estate and the
Saunders Real Estate Forestry Group, the Saunders team of land professionals offers advisory and
transactional services through their home office in Lakeland, FL, the North Florida office in Lake City,
FL, and the South Georgia office in Thomasville, GA. We provide services to land and commercial clients
through our commercial real estate brokerage, Saunders Ralston Dantzler Real Estate.



080819-A