

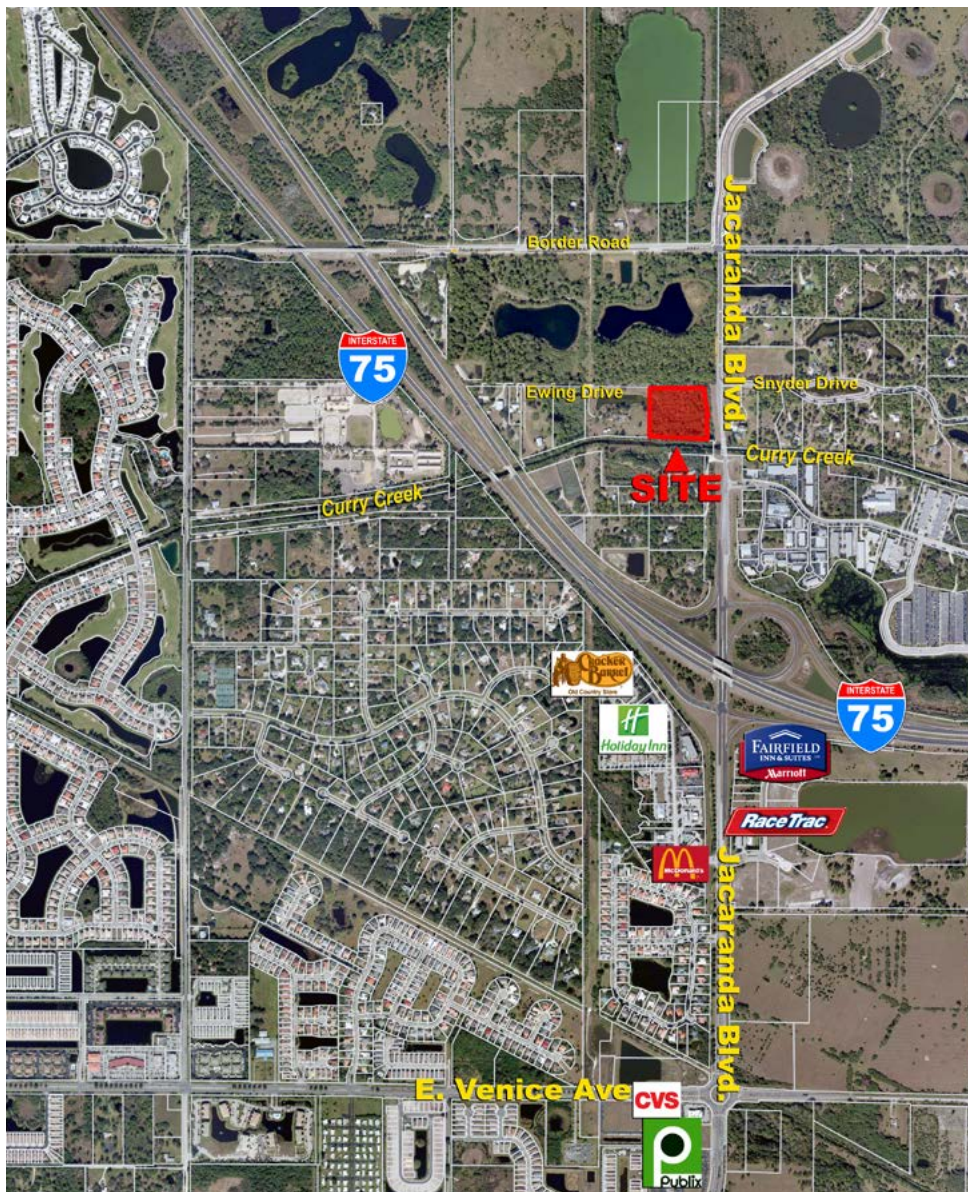
JACARANDA BOULEVARD DEVELOPMENT TRACT

VENICE, FL | SARASOTA COUNTY

6.7 ± ACRES TOTAL



SPECIFICATIONS & FEATURES



Acreage: 6.7 ± acres

Permitted Lots: 1 with option to secure higher density

Price per Lot: \$430,000 as-is for 1 lot

Average Lot Size: 6.7 ± acres as-is for 1 lot

Lot Inventory: 1 as-is with option to secure higher density

Sale Price: \$430,000

Price per Acre: County may allow 2 units per acre

County: Sarasota

Site Address: SW corner of Jacaranda Boulevard & Snyder Drive, Venice Florida 34292

Nearest Intersection: I-75 & Jacaranda Boulevard

Water Features: 2 ponds for water views & fishing

Road Frontage: 531 ± ft along Jacaranda Boulevard

Uplands/Wetlands: 5.4 ± acres uplands; 1.3 ± acres wetlands

Utilities: Available along Jacaranda Boulevard

Zoning/FLU: OUE 1

Structures: Foundation for 1 home

Taxes: \$1,955

Beautiful parcel for a high-end luxury residential estate homesite! One permitted lot as-is with owner opportunity to secure higher density.

The property offers access via beautifully landscaped and divided Jacaranda Boulevard that connects to I-75 less than a mile away.

Near downtown Venice, it is just south of the City of Sarasota, both with Florida's best beaches and quaint culture.

Close amenities, such as shopping, restaurants, and Publix® Super Market at Jacaranda Commons Shopping Center is just a mile south on Jacaranda Boulevard.

This parcel is on the SE corner of a 73-acre parcel also available for sale and development!

Beautiful High-End
Residential Estate
Homesite with
Option To Secure
Higher Density!

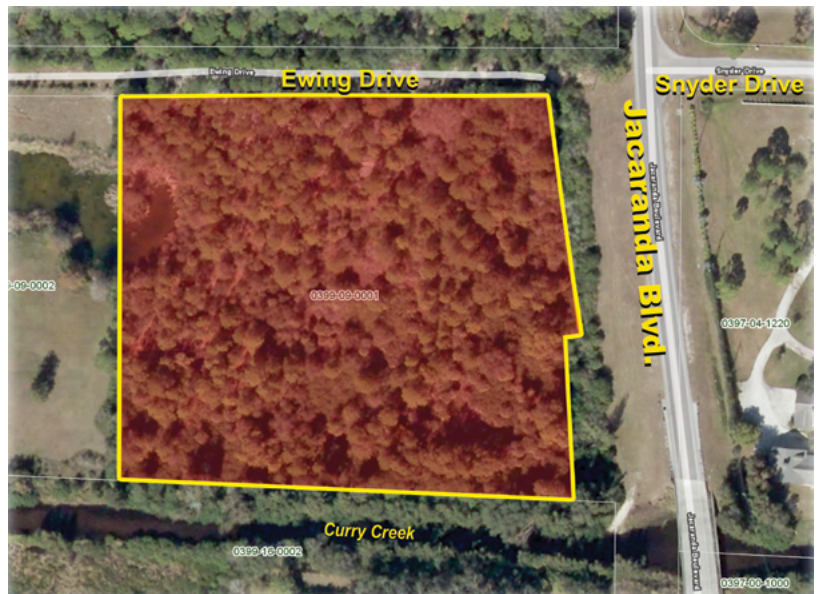
LOCATION & DRIVING DIRECTIONS

Parcel IDs: 0399090001

Driving Directions:

- Take I-75 in Sarasota County, Florida to Jacaranda Boulevard exit.
- Travel north on Jacaranda Boulevard for 1 mile.
- Property is on west side of Jacaranda Boulevard, just across Curry Creek on SW corner of Jacaranda Boulevard and Snyder Drive.

Showing Instructions: Contact the listing agent, Steve Toner (863.226.6193), to learn more or schedule a showing time.



Nearest Points of Interest:

- City of Venice
- Publix®-anchored shopping center is 1.4 ± miles south on Jacaranda Boulevard
- White, sandy beaches and marinas are 5 ± miles west
- Numerous golf courses and parks are within a few miles
- Excellent shopping and dining in Venice just 4 ± miles
- Sarasota is just a few miles up I-75, along with museums, art, international airport, and major malls



114 N. Tennessee Ave.
3rd Floor
Lakeland, FL 33801

6.7 ± Acres • Beautiful High-End Residential Estate Homesite
Option To Secure Higher Density • Close To Shopping, Dining & Beaches
Adjacent 73 ± Acre Parcel Also Available for Sale & Development

Visit SVNsaunders.com & Search For: Jacaranda

Steve Toner, MBA 863.226.6193 | steve.toner@svn.com



LAKELAND OFFICE:
114 N. Tennessee Ave. 3rd Floor
Lakeland, FL 33801
863.648.1528 - Main Office

LAKE CITY OFFICE:
356 NW Lake City Avenue
Lake City, FL 32055
386.438.5896

©2019 SVN | Saunders Ralston Dantzler Real Estate. All SVN® Offices Independently Owned and Operated
Saunders Ralston Dantzler Real Estate is regarded as an authority on all types of Florida land and
conservation easements, transacting over \$2.5 billion in sales since 1996. Offering land, forestry, and
conservation easement real estate services through Saunders Ralston Dantzler Real Estate and the
Saunders Real Estate Forestry Group, the Saunders team of land professionals offers advisory and
transactional services through their home office in Lakeland, FL, the North Florida office in Lake City,
FL, and the South Georgia office in Thomasville, GA. We provide services to land and commercial clients
through our commercial real estate brokerage, Saunders Ralston Dantzler Real Estate.



021016-A