



Age by Sex Profile

Anchorage Plaza
12903 Factory Ln, Louisville, Kentucky, 40245
Ring: 1 mile radius

Prepared by Charlotte Hollkamp
Latitude: 38.28833
Longitude: -85.51225

Summary	Census 2010	2019	2024	2019-2024 Change	2019-2024 Annual Rate
Population	3,697	4,267	4,503	236	1.08%
Households	1,576	1,857	1,984	127	1.33%
Average Household Size	2.34	2.29	2.27	-0.02	-0.18%
Median Age	33.5	34.6	35.9	1.3	0.74%
Median Male Age	33.7	34.9	36.1	1.2	0.68%
Median Female Age	33.3	34.3	35.6	1.3	0.75%

Total Population by Age	Census 2010		2019		2024	
	Number	Percent	Number	Percent	Number	Percent
Total	3,698	100.0%	4,266	100.0%	4,502	100.0%
0 - 4	301	8.1%	322	7.5%	336	7.5%
5 - 9	339	9.2%	380	8.9%	394	8.8%
10 - 14	288	7.8%	316	7.4%	341	7.6%
15 - 19	178	4.8%	196	4.6%	209	4.6%
20 - 24	219	5.9%	159	3.7%	159	3.5%
25 - 29	301	8.1%	364	8.5%	248	5.5%
30 - 34	315	8.5%	433	10.2%	479	10.6%
35 - 39	348	9.4%	424	9.9%	496	11.0%
40 - 44	380	10.3%	380	8.9%	441	9.8%
45 - 49	289	7.8%	301	7.1%	300	6.7%
50 - 54	200	5.4%	221	5.2%	245	5.4%
55 - 59	156	4.2%	198	4.6%	204	4.5%
60 - 64	153	4.1%	186	4.4%	192	4.3%
65 - 69	89	2.4%	155	3.6%	160	3.6%
70 - 74	54	1.5%	104	2.4%	136	3.0%
75 - 79	42	1.1%	58	1.4%	77	1.7%
80 - 84	28	0.8%	39	0.9%	47	1.0%
85+	17	0.5%	30	0.7%	38	0.8%
18+	2,646	71.6%	3,111	72.9%	3,284	72.9%
21+	2,565	69.4%	3,026	70.9%	3,195	71.0%

Total Population by Age Dependency	Census 2010		2019		2024	
	Number	Percent	Number	Percent	Number	Percent
Total	3,698	100.0%	4,266	100.0%	4,502	100.0%
Child (<18)	1,052	28.5%	1,156	27.1%	1,218	27.0%
Working-Age (18-64)	2,415	65.3%	2,724	63.8%	2,826	62.8%
Senior (Age 65+)	231	6.2%	387	9.1%	459	10.2%
Child Dependency Ratio	43.6	-	42.4	-	43.1	-
Age Dependency Ratio	53.1	-	56.6	-	59.3	-
Senior Dependency Ratio	9.6	-	14.2	-	16.2	-

Data Note: Detail may not sum to totals due to rounding. Dependency ratios represent the number of dependents per 100 persons of the working-age population aged 18 to 64.

Source: U.S. Census Bureau, Census 2010 Summary File 1. Esri forecasts for 2019 and 2024.

August 14, 2019



Age by Sex Profile

Anchorage Plaza
12903 Factory Ln, Louisville, Kentucky, 40245
Ring: 1 mile radius

Prepared by Charlotte Hollkamp
Latitude: 38.28833
Longitude: -85.51225

Male Population by Age	Census 2010		2019		2024	
	Number	Percent	Number	Percent	Number	Percent
Total	1,800	100.0%	2,074	100.0%	2,183	100.0%
0 - 4	139	7.7%	150	7.2%	158	7.2%
5 - 9	168	9.3%	188	9.1%	195	8.9%
10 - 14	146	8.1%	156	7.5%	166	7.6%
15 - 19	91	5.1%	101	4.9%	106	4.9%
20 - 24	90	5.0%	72	3.5%	77	3.5%
25 - 29	151	8.4%	169	8.1%	118	5.4%
30 - 34	155	8.6%	206	9.9%	215	9.8%
35 - 39	168	9.3%	216	10.4%	245	11.2%
40 - 44	189	10.5%	186	9.0%	224	10.3%
45 - 49	148	8.2%	158	7.6%	154	7.1%
50 - 54	104	5.8%	110	5.3%	125	5.7%
55 - 59	71	3.9%	93	4.5%	96	4.4%
60 - 64	66	3.7%	86	4.1%	90	4.1%
65 - 69	51	2.8%	74	3.6%	78	3.6%
70 - 74	26	1.4%	54	2.6%	61	2.8%
75 - 79	16	0.9%	26	1.3%	37	1.7%
80 - 84	14	0.8%	17	0.8%	21	1.0%
85+	7	0.4%	12	0.6%	15	0.7%
18+	1,283	71.3%	1,509	72.8%	1,589	72.8%

Female Population by Age	Census 2010		2019		2024	
	Number	Percent	Number	Percent	Number	Percent
Total	1,898	100.0%	2,192	100.0%	2,320	100.0%
0 - 4	162	8.5%	172	7.8%	178	7.7%
5 - 9	171	9.0%	192	8.8%	199	8.6%
10 - 14	142	7.5%	161	7.3%	175	7.5%
15 - 19	88	4.6%	95	4.3%	103	4.4%
20 - 24	129	6.8%	87	4.0%	82	3.5%
25 - 29	150	7.9%	195	8.9%	130	5.6%
30 - 34	160	8.4%	227	10.4%	263	11.3%
35 - 39	180	9.5%	208	9.5%	250	10.8%
40 - 44	192	10.1%	194	8.9%	217	9.4%
45 - 49	140	7.4%	143	6.5%	146	6.3%
50 - 54	96	5.1%	111	5.1%	120	5.2%
55 - 59	85	4.5%	105	4.8%	108	4.7%
60 - 64	86	4.5%	100	4.6%	102	4.4%
65 - 69	39	2.1%	82	3.7%	82	3.5%
70 - 74	28	1.5%	50	2.3%	75	3.2%
75 - 79	25	1.3%	32	1.5%	40	1.7%
80 - 84	15	0.8%	22	1.0%	25	1.1%
85+	10	0.5%	18	0.8%	23	1.0%
18+	1,363	71.8%	1,602	73.1%	1,696	73.1%

Source: U.S. Census Bureau, Census 2010 Summary File 1. Esri forecasts for 2019 and 2024.

August 14, 2019

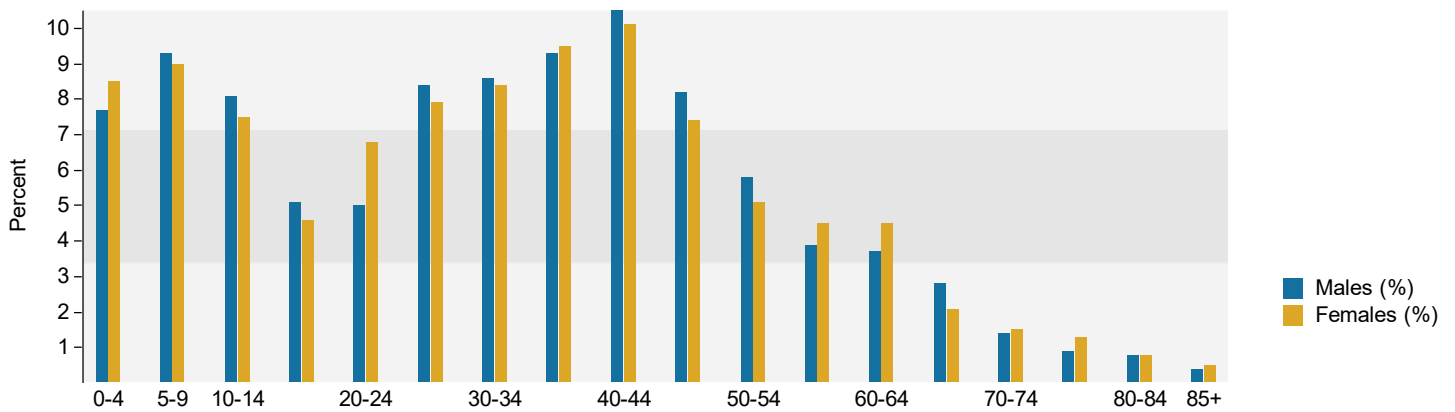


Age by Sex Profile

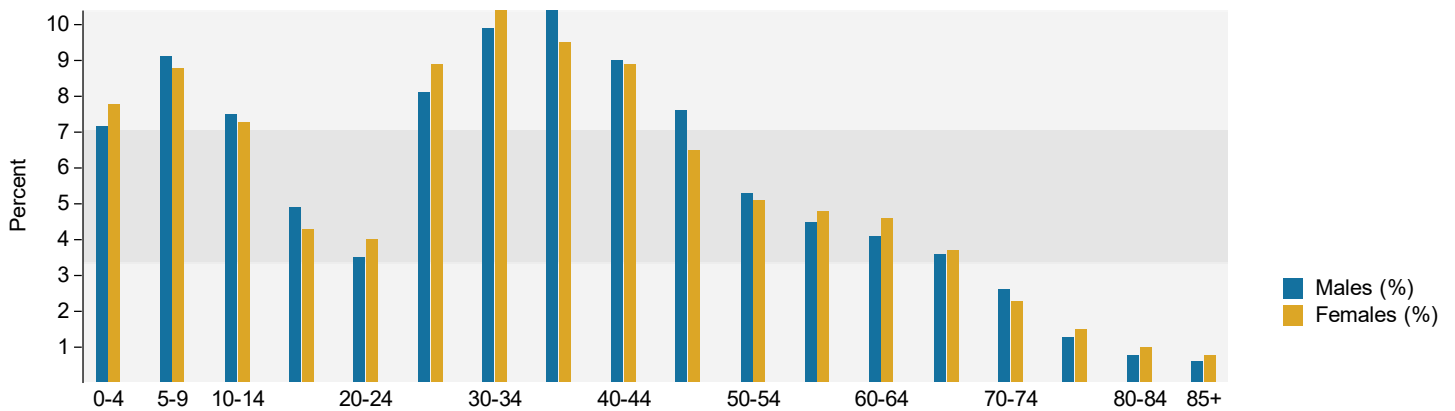
Anchorage Plaza
12903 Factory Ln, Louisville, Kentucky, 40245
Ring: 1 mile radius

Prepared by Charlotte Hollkamp
Latitude: 38.28833
Longitude: -85.51225

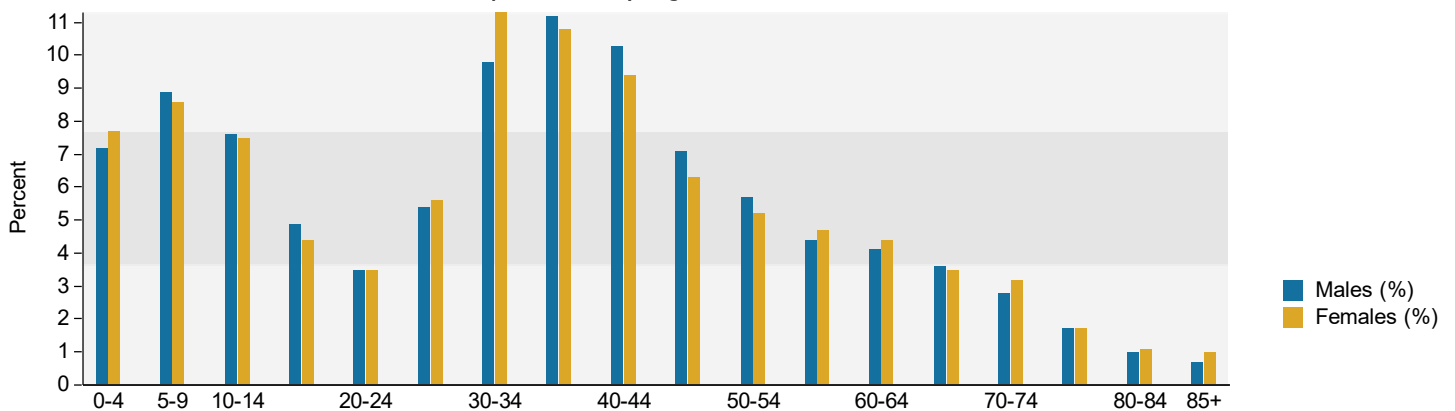
Census 2010 Population by Age and Sex



2019 Population by Age and Sex



2024 Population by Age and Sex



Source: U.S. Census Bureau, Census 2010 Summary File 1. Esri forecasts for 2019 and 2024.

August 14, 2019



Age by Sex Profile

Anchorage Plaza
12903 Factory Ln, Louisville, Kentucky, 40245
Ring: 3 mile radius

Prepared by Charlotte Hollkamp
Latitude: 38.28833
Longitude: -85.51225

Summary	Census 2010	2019	2024	2019-2024 Change	2019-2024 Annual Rate
Population	42,074	45,839	47,952	2,113	0.91%
Households	16,056	17,617	18,493	876	0.98%
Average Household Size	2.60	2.58	2.57	-0.01	-0.08%
Median Age	37.3	39.1	39.9	0.8	0.41%
Median Male Age	36.3	37.9	38.6	0.7	0.37%
Median Female Age	38.3	40.3	41.1	0.8	0.39%

Total Population by Age	Census 2010		2019		2024	
	Number	Percent	Number	Percent	Number	Percent
Total	42,073	100.0%	45,838	100.0%	47,951	100.0%
0 - 4	2,987	7.1%	2,860	6.2%	2,951	6.2%
5 - 9	3,400	8.1%	3,349	7.3%	3,356	7.0%
10 - 14	3,362	8.0%	3,440	7.5%	3,420	7.1%
15 - 19	2,729	6.5%	2,861	6.2%	2,970	6.2%
20 - 24	1,768	4.2%	2,174	4.7%	2,132	4.4%
25 - 29	2,487	5.9%	2,637	5.8%	2,534	5.3%
30 - 34	2,833	6.7%	2,839	6.2%	3,336	7.0%
35 - 39	3,154	7.5%	3,357	7.3%	3,350	7.0%
40 - 44	3,433	8.2%	3,250	7.1%	3,530	7.4%
45 - 49	3,519	8.4%	3,191	7.0%	3,113	6.5%
50 - 54	3,111	7.4%	3,104	6.8%	3,065	6.4%
55 - 59	2,704	6.4%	3,111	6.8%	2,930	6.1%
60 - 64	2,396	5.7%	2,849	6.2%	2,973	6.2%
65 - 69	1,559	3.7%	2,410	5.3%	2,656	5.5%
70 - 74	971	2.3%	1,893	4.1%	2,196	4.6%
75 - 79	685	1.6%	1,137	2.5%	1,642	3.4%
80 - 84	513	1.2%	699	1.5%	977	2.0%
85+	461	1.1%	677	1.5%	820	1.7%
18+	30,404	72.3%	34,317	74.9%	36,283	75.7%
21+	29,286	69.6%	32,885	71.7%	34,816	72.6%

Total Population by Age Dependency	Census 2010		2019		2024	
	Number	Percent	Number	Percent	Number	Percent
Total	42,073	100.0%	45,838	100.0%	47,951	100.0%
Child (<18)	11,670	27.7%	11,522	25.1%	11,668	24.3%
Working-Age (18-64)	26,214	62.3%	27,500	60.0%	27,992	58.4%
Senior (Age 65+)	4,190	10.0%	6,817	14.9%	8,292	17.3%
Child Dependency Ratio	44.5	-	41.9	-	41.7	-
Age Dependency Ratio	60.5	-	66.7	-	71.3	-
Senior Dependency Ratio	16.0	-	24.8	-	29.6	-

Data Note: Detail may not sum to totals due to rounding. Dependency ratios represent the number of dependents per 100 persons of the working-age population aged 18 to 64.

Source: U.S. Census Bureau, Census 2010 Summary File 1. Esri forecasts for 2019 and 2024.

August 14, 2019



Age by Sex Profile

Anchorage Plaza
12903 Factory Ln, Louisville, Kentucky, 40245
Ring: 3 mile radius

Prepared by Charlotte Hollkamp
Latitude: 38.28833
Longitude: -85.51225

Male Population by Age	Census 2010		2019		2024	
	Number	Percent	Number	Percent	Number	Percent
Total	20,360	100.0%	22,169	100.0%	23,222	100.0%
0 - 4	1,502	7.4%	1,433	6.5%	1,485	6.4%
5 - 9	1,774	8.7%	1,705	7.7%	1,704	7.3%
10 - 14	1,663	8.2%	1,749	7.9%	1,721	7.4%
15 - 19	1,449	7.1%	1,480	6.7%	1,548	6.7%
20 - 24	834	4.1%	1,084	4.9%	1,084	4.7%
25 - 29	1,235	6.1%	1,334	6.0%	1,269	5.5%
30 - 34	1,344	6.6%	1,337	6.0%	1,651	7.1%
35 - 39	1,482	7.3%	1,648	7.4%	1,610	6.9%
40 - 44	1,676	8.2%	1,552	7.0%	1,732	7.5%
45 - 49	1,684	8.3%	1,534	6.9%	1,505	6.5%
50 - 54	1,475	7.2%	1,511	6.8%	1,469	6.3%
55 - 59	1,260	6.2%	1,478	6.7%	1,415	6.1%
60 - 64	1,147	5.6%	1,301	5.9%	1,395	6.0%
65 - 69	748	3.7%	1,109	5.0%	1,212	5.2%
70 - 74	429	2.1%	876	4.0%	978	4.2%
75 - 79	304	1.5%	502	2.3%	731	3.1%
80 - 84	201	1.0%	293	1.3%	415	1.8%
85+	153	0.8%	245	1.1%	301	1.3%
18+	14,415	70.8%	16,312	73.6%	17,303	74.5%

Female Population by Age	Census 2010		2019		2024	
	Number	Percent	Number	Percent	Number	Percent
Total	21,713	100.0%	23,670	100.0%	24,730	100.0%
0 - 4	1,485	6.8%	1,427	6.0%	1,467	5.9%
5 - 9	1,626	7.5%	1,645	6.9%	1,652	6.7%
10 - 14	1,699	7.8%	1,691	7.1%	1,699	6.9%
15 - 19	1,280	5.9%	1,381	5.8%	1,422	5.8%
20 - 24	934	4.3%	1,090	4.6%	1,049	4.2%
25 - 29	1,251	5.8%	1,303	5.5%	1,265	5.1%
30 - 34	1,489	6.9%	1,501	6.3%	1,685	6.8%
35 - 39	1,672	7.7%	1,709	7.2%	1,739	7.0%
40 - 44	1,758	8.1%	1,698	7.2%	1,799	7.3%
45 - 49	1,835	8.5%	1,657	7.0%	1,609	6.5%
50 - 54	1,637	7.5%	1,594	6.7%	1,596	6.5%
55 - 59	1,443	6.6%	1,633	6.9%	1,515	6.1%
60 - 64	1,249	5.8%	1,548	6.5%	1,579	6.4%
65 - 69	812	3.7%	1,301	5.5%	1,444	5.8%
70 - 74	542	2.5%	1,017	4.3%	1,218	4.9%
75 - 79	381	1.8%	635	2.7%	911	3.7%
80 - 84	312	1.4%	407	1.7%	562	2.3%
85+	308	1.4%	433	1.8%	519	2.1%
18+	15,989	73.6%	18,004	76.1%	18,981	76.8%

Source: U.S. Census Bureau, Census 2010 Summary File 1. Esri forecasts for 2019 and 2024.

August 14, 2019

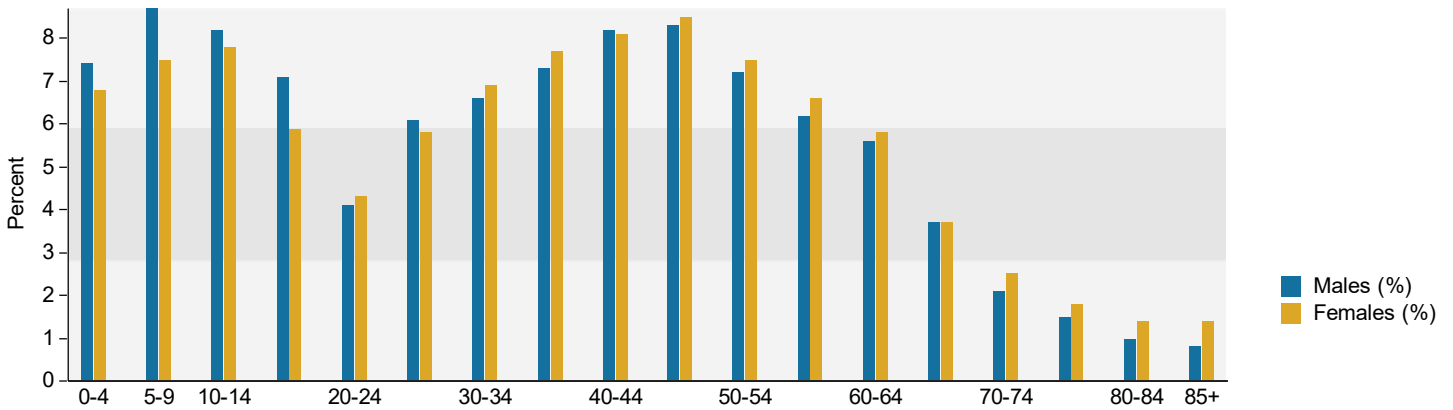


Age by Sex Profile

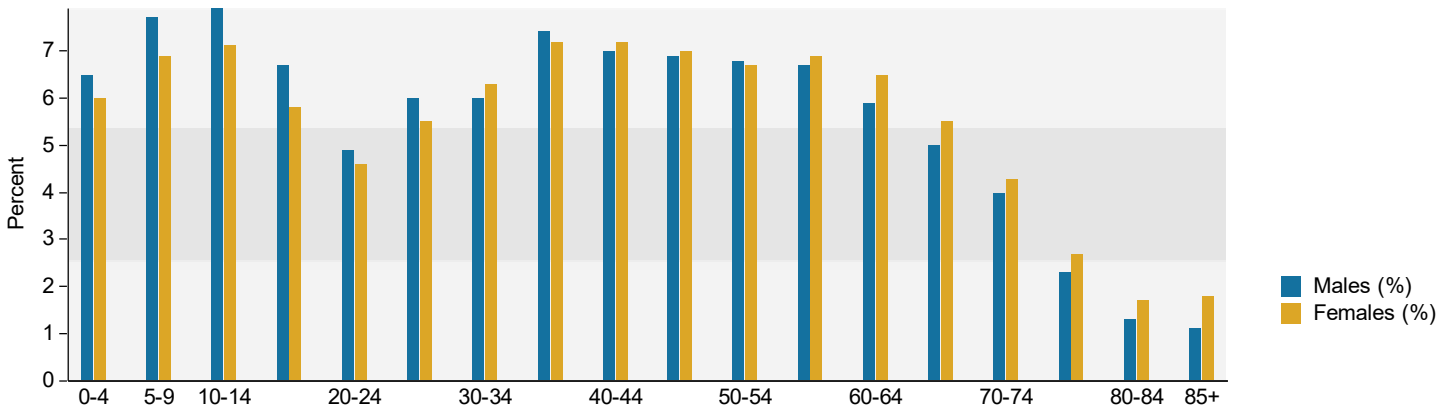
Anchorage Plaza
12903 Factory Ln, Louisville, Kentucky, 40245
Ring: 3 mile radius

Prepared by Charlotte Hollkamp
Latitude: 38.28833
Longitude: -85.51225

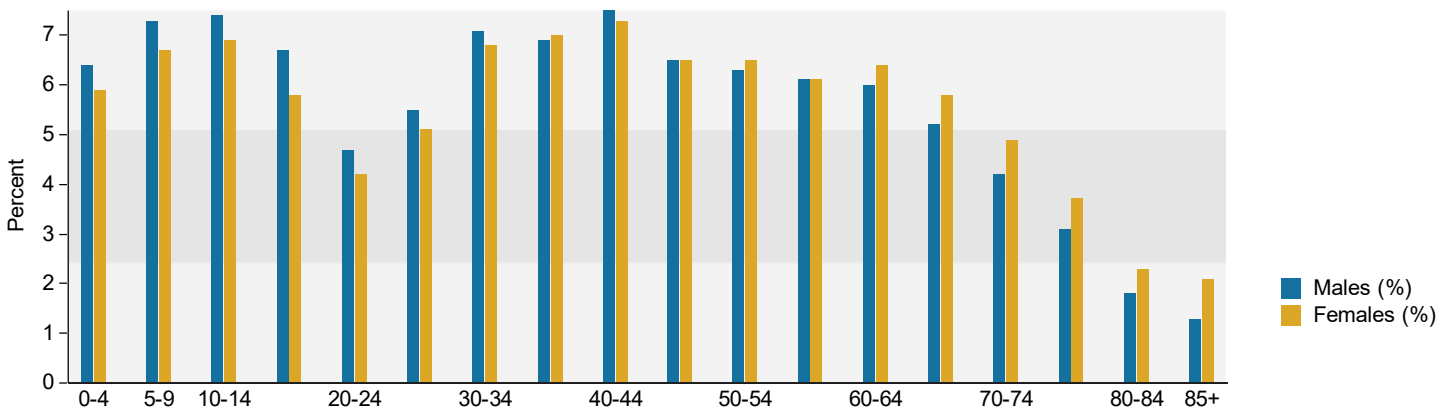
Census 2010 Population by Age and Sex



2019 Population by Age and Sex



2024 Population by Age and Sex



Source: U.S. Census Bureau, Census 2010 Summary File 1. Esri forecasts for 2019 and 2024.



Age by Sex Profile

Anchorage Plaza
12903 Factory Ln, Louisville, Kentucky, 40245
Ring: 5 mile radius

Prepared by Charlotte Hollkamp
Latitude: 38.28833
Longitude: -85.51225

Summary	Census 2010	2019	2024	2019-2024 Change	2019-2024 Annual Rate
Population	109,547	122,833	130,039	7,206	1.15%
Households	43,465	48,681	51,568	2,887	1.16%
Average Household Size	2.49	2.49	2.49	0.00	0.00%
Median Age	39.4	41.2	42.1	0.9	0.43%
Median Male Age	38.1	39.9	40.8	0.9	0.45%
Median Female Age	40.6	42.5	43.4	0.9	0.42%

Total Population by Age	Census 2010		2019		2024	
	Number	Percent	Number	Percent	Number	Percent
Total	109,547	100.0%	122,835	100.0%	130,039	100.0%
0 - 4	7,163	6.5%	7,067	5.8%	7,362	5.7%
5 - 9	7,938	7.2%	8,153	6.6%	8,278	6.4%
10 - 14	7,986	7.3%	8,679	7.1%	8,787	6.8%
15 - 19	6,764	6.2%	7,463	6.1%	7,868	6.1%
20 - 24	4,708	4.3%	5,827	4.7%	5,793	4.5%
25 - 29	6,430	5.9%	6,768	5.5%	6,656	5.1%
30 - 34	6,948	6.3%	7,009	5.7%	8,095	6.2%
35 - 39	7,808	7.1%	8,429	6.9%	8,283	6.4%
40 - 44	8,242	7.5%	8,217	6.7%	9,076	7.0%
45 - 49	8,668	7.9%	8,411	6.8%	8,400	6.5%
50 - 54	8,218	7.5%	8,221	6.7%	8,446	6.5%
55 - 59	7,362	6.7%	8,618	7.0%	8,172	6.3%
60 - 64	6,930	6.3%	8,143	6.6%	8,616	6.6%
65 - 69	4,654	4.2%	7,074	5.8%	7,873	6.1%
70 - 74	3,185	2.9%	5,815	4.7%	6,661	5.1%
75 - 79	2,463	2.2%	3,719	3.0%	5,282	4.1%
80 - 84	2,103	1.9%	2,472	2.0%	3,270	2.5%
85+	1,978	1.8%	2,750	2.2%	3,121	2.4%
18+	81,733	74.6%	94,019	76.5%	100,430	77.2%
21+	78,897	72.0%	90,315	73.5%	96,569	74.3%

Total Population by Age Dependency	Census 2010		2019		2024	
	Number	Percent	Number	Percent	Number	Percent
Total	109,547	100.0%	122,835	100.0%	130,039	100.0%
Child (<18)	27,814	25.4%	28,814	23.5%	29,610	22.8%
Working-Age (18-64)	67,351	61.5%	72,190	58.8%	74,222	57.1%
Senior (Age 65+)	14,383	13.1%	21,829	17.8%	26,208	20.2%
Child Dependency Ratio	41.3	-	39.9	-	39.9	-
Age Dependency Ratio	62.7	-	70.2	-	75.2	-
Senior Dependency Ratio	21.4	-	30.2	-	35.3	-

Data Note: Detail may not sum to totals due to rounding. Dependency ratios represent the number of dependents per 100 persons of the working-age population aged 18 to 64.

Source: U.S. Census Bureau, Census 2010 Summary File 1. Esri forecasts for 2019 and 2024.

August 14, 2019



Age by Sex Profile

Anchorage Plaza
12903 Factory Ln, Louisville, Kentucky, 40245
Ring: 5 mile radius

Prepared by Charlotte Hollkamp
Latitude: 38.28833
Longitude: -85.51225

Male Population by Age	Census 2010		2019		2024	
	Number	Percent	Number	Percent	Number	Percent
Total	52,352	100.0%	58,921	100.0%	62,530	100.0%
0 - 4	3,627	6.9%	3,570	6.1%	3,731	6.0%
5 - 9	4,052	7.7%	4,179	7.1%	4,234	6.8%
10 - 14	3,990	7.6%	4,409	7.5%	4,457	7.1%
15 - 19	3,519	6.7%	3,806	6.5%	4,056	6.5%
20 - 24	2,268	4.3%	2,899	4.9%	2,883	4.6%
25 - 29	3,133	6.0%	3,342	5.7%	3,290	5.3%
30 - 34	3,318	6.3%	3,309	5.6%	3,949	6.3%
35 - 39	3,711	7.1%	4,064	6.9%	3,956	6.3%
40 - 44	3,987	7.6%	3,952	6.7%	4,406	7.0%
45 - 49	4,109	7.8%	4,049	6.9%	4,053	6.5%
50 - 54	3,878	7.4%	3,966	6.7%	4,078	6.5%
55 - 59	3,406	6.5%	4,074	6.9%	3,919	6.3%
60 - 64	3,275	6.3%	3,771	6.4%	4,064	6.5%
65 - 69	2,169	4.1%	3,218	5.5%	3,604	5.8%
70 - 74	1,429	2.7%	2,673	4.5%	2,984	4.8%
75 - 79	1,069	2.0%	1,634	2.8%	2,350	3.8%
80 - 84	783	1.5%	1,036	1.8%	1,380	2.2%
85+	629	1.2%	966	1.6%	1,136	1.8%
18+	38,235	73.0%	44,251	75.1%	47,439	75.9%

Female Population by Age	Census 2010		2019		2024	
	Number	Percent	Number	Percent	Number	Percent
Total	57,195	100.0%	63,912	100.0%	67,510	100.0%
0 - 4	3,536	6.2%	3,497	5.5%	3,631	5.4%
5 - 9	3,886	6.8%	3,973	6.2%	4,044	6.0%
10 - 14	3,996	7.0%	4,270	6.7%	4,330	6.4%
15 - 19	3,244	5.7%	3,657	5.7%	3,812	5.6%
20 - 24	2,440	4.3%	2,928	4.6%	2,910	4.3%
25 - 29	3,297	5.8%	3,425	5.4%	3,366	5.0%
30 - 34	3,630	6.3%	3,700	5.8%	4,146	6.1%
35 - 39	4,097	7.2%	4,365	6.8%	4,326	6.4%
40 - 44	4,255	7.4%	4,265	6.7%	4,670	6.9%
45 - 49	4,559	8.0%	4,361	6.8%	4,347	6.4%
50 - 54	4,340	7.6%	4,255	6.7%	4,368	6.5%
55 - 59	3,956	6.9%	4,544	7.1%	4,253	6.3%
60 - 64	3,655	6.4%	4,372	6.8%	4,552	6.7%
65 - 69	2,485	4.3%	3,855	6.0%	4,269	6.3%
70 - 74	1,757	3.1%	3,142	4.9%	3,677	5.4%
75 - 79	1,393	2.4%	2,084	3.3%	2,932	4.3%
80 - 84	1,320	2.3%	1,436	2.2%	1,891	2.8%
85+	1,349	2.4%	1,784	2.8%	1,985	2.9%
18+	43,498	76.1%	49,768	77.9%	52,991	78.5%

Source: U.S. Census Bureau, Census 2010 Summary File 1. Esri forecasts for 2019 and 2024.

August 14, 2019

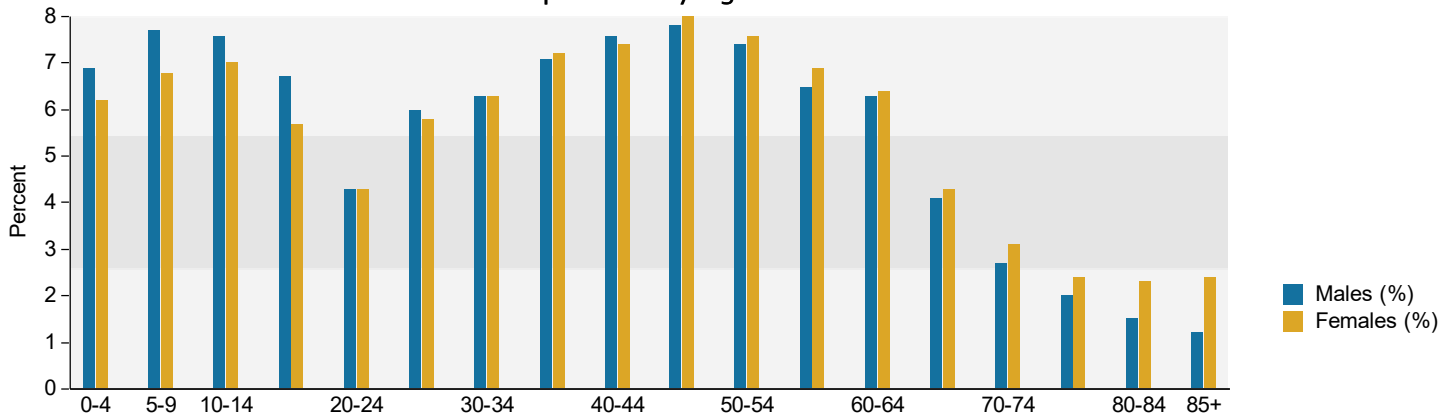


Age by Sex Profile

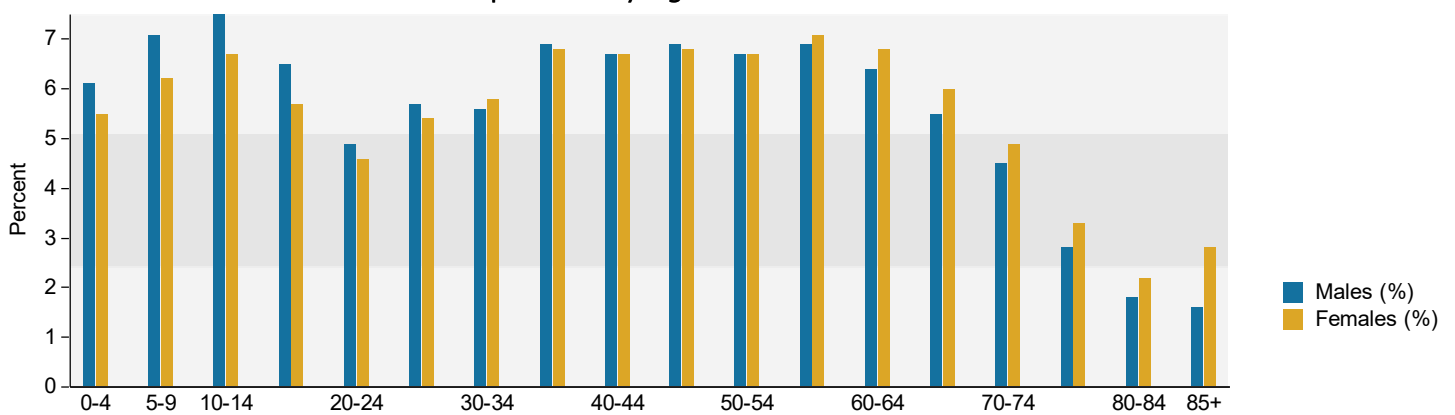
Anchorage Plaza
12903 Factory Ln, Louisville, Kentucky, 40245
Ring: 5 mile radius

Prepared by Charlotte Hollkamp
Latitude: 38.28833
Longitude: -85.51225

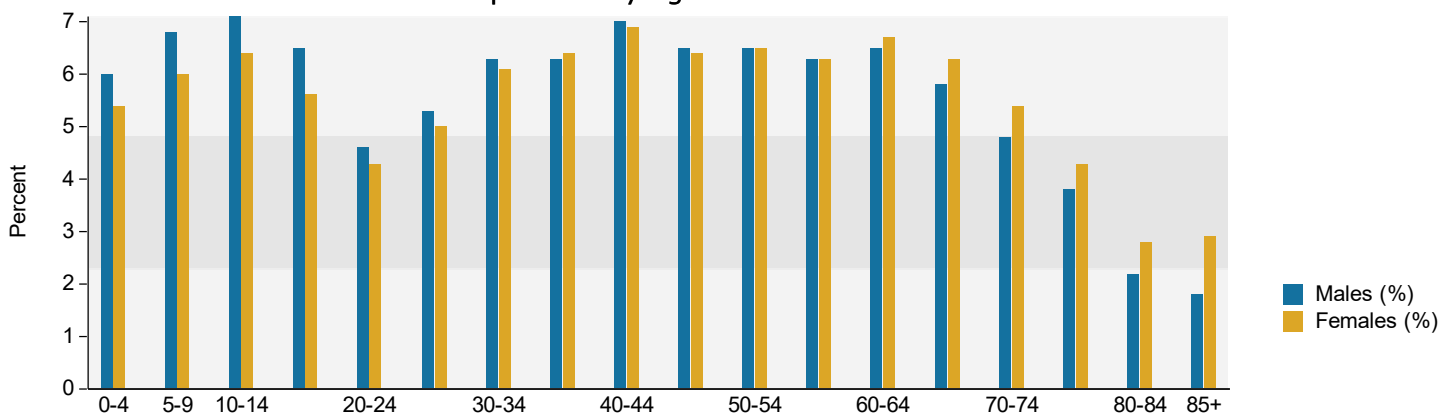
Census 2010 Population by Age and Sex



2019 Population by Age and Sex



2024 Population by Age and Sex



Source: U.S. Census Bureau, Census 2010 Summary File 1. Esri forecasts for 2019 and 2024.